



MEMORANDUM

To: Gary Jackson, City Manager
Paul Fetherston, Assistant City Manager

From: Patricia Rosenberg, Internal Auditor

Date: May 8, 2015

Subject: Asheville Police Department Speed Measuring Instruments Audit Summary

Background

In October 2014, concerns were raised to the District Attorney's office regarding the validity of the Asheville Police Department's (Police Department) use of speed measuring instruments (SMIs). The District Attorney at the time requested that the City of Asheville (City) conduct an investigation of all citations issued and charges filed using SMIs to corroborate visual speed estimates from January 2011 through October 2014.

In an effort to complete an independent review of SMI calibrations and officer certifications, the City entered into a contract with Johnson Price Sprinkle PA (JPS) on November 7, 2014. JPS's final report is attached (Attachment B).

Audit Process

In order to fulfill the scope of work for the audit, it was necessary to

- 1) verify that the officer issuing the citation was properly certified at the time of the citation,
- 2) identify the SMI used to issue the citation, and
- 3) verify that the SMI was properly calibrated at the time of the citation.

JPS, under the advice of the City's Internal Auditor, Police Department, and City Attorney's Office, determined that it was appropriate and necessary to be exact and collect as much information as possible in order to verify the accuracy of the results of the audit.

In addition to utilizing records obtained from the Police Department, JPS sent independent record verifications to the organizations that issued the SMI calibrations and officer certifications. Through the responses received from Communication Services Inc., JA Electronic, and PB Electronics, Inc., JPS compiled a list of all SMI calibrations, documenting any lapses. It is important to note that while there were numerous gaps in SMI calibrations, most of the SMI units were not in use when their calibrations had expired.

JPS performed similar steps to verify officer certifications by contacting the North Carolina Department of Justice Standards Division, which is responsible for issuing SMI operator certifications. JPS documented lapses in certifications, noting that officers largely self-regulated by using SMIs only when they had proper certifications.

JPS examined every citation written and charge filed from January 2011 through November 2014, isolating citations and charges that utilized SMIs. From there, JPS matched each citation to the SMI unit used by combing through computer records, fueling records, and notations on SMI calibration certificates. Once JPS was able to

identify the SMI used for each citation, it was determined which citations raised concerns about officer certifications and SMI calibrations. Due to incomplete recordkeeping within the Police Department, JPS was unable to determine which SMI was used for some citations.

Results

JPS examined a total of 7,021 citations and charges that were issued using SMIs to corroborate visual speed estimates. Of those, 1,315 could not be positively determined to be issued by a certified operator using a calibrated SMI. The details of those citations are below.

- 54 Citations were issued by a police officer who was not a certified SMI operator:

Year	No. of Citations
2011	21
2012	11
2013	6
2014	16

For the majority of these citations, the City obtained written statements from the police officers. These statements clarified that although the police officer wrote the citation in question, he/she was working in tandem with another police officer, and the other police officer operated the SMI and was properly certified at the time of the citation. These statements were not considered to be sufficient evidence for JPS’s purposes. The North Carolina Department of Justice Standards Division has stated, however, that it will consider these statements when determining its action as the result of this audit.

- 482 citations were issued using a SMI that was not calibrated at the time of the citation:

Year	No. of Citations
2011	29
2012	181
2013	0
2014	272

- 266 citations did not have enough evidence to identify the Police Department vehicle driven at the time of the citation:

Year	No. of Citations
2011	3
2012	218
2013	33
2014	12

- 527 citations did not have enough evidence to identify the SMI used:

Year	No. of Citations
2011	173
2012	279
2013	41

Recommendations

In addition to the results, JPS made recommendations for the Police Department to improve its processes regarding SMIs to prevent future problems. A response to the Audit Report from the Police Department, which outlines its plan to implement recommendations, is attached (Attachment A).

ATTACHMENTS

- A Memo from Asheville Police Department Interim Chief of Police Steve Belcher
- B Agreed Upon Procedures Report from Johnson Price Sprinkle PA

MEMORANDUM

TO: Gary Jackson, City Manager
FROM: Steve Belcher, Interim Chief of Police VIA: Patricia Rosenberg
DATE: May 8, 2015
SUBJECT: APD Response to Speed Measuring Instrument Audit

Following a brief opportunity to review the audit of the Asheville Police Department's (Department) speed measuring devices recently completed by Johnson Price Sprinkle PA (JPS), I wanted to provide a response on the Department's behalf.

The audit points out a number of short comings within the Department, primarily dealing with management and supervisory practices, radar certifications, officer certification tracking, citation review and tracking and training. The audit makes a number of recommendations to improve the Department's operations both from an organizational and individual perspective.

After reviewing the audit and discussing it with the City's internal auditor and JPS personnel, it is clear that this situation should simply not have occurred. There were obvious break downs department wide, both individually and collectively. During the audit process, all Department employees cooperated with both the City's internal auditor and JPS to ensure all information requested was provided.

The Department's challenge and task now is to embrace the report recommendations that are being made and change the way the Department's business has been done in the past. The audit will require a thorough line by line review of all of the information to ensure all recommendations are addressed and policies and procedures are in place so there is no repeat of an incident such as this. Over these past few months while the audit has been taking place, the Department has been looking closely at its policies and procedures. To date, many of the recommendations mentioned in the audit have been completed or are currently in-progress.

The Department's review of the audit will involve a team which will minimally include the Professional Standards Unit, the Traffic Section, Patrol Section, Logistics Section, and the City Attorney's Office. The Departmental review team will also work closely with the North Carolina Criminal Justice Education and Training Standards Commission, the agency that oversees and issues Speed Measuring Instrument Operator Certifications. The Department will revise policies as necessary, conduct department wide training related to the use of Speed Measuring Instruments and implement a system of checks and balances.

It is the Department's goal to accomplish the needed changes and training within the next 30 days.

Traffic safety and police credibility are great concerns of all residents. It is the Department's responsibility to deliver all services within acceptable standards.

City of Asheville

North Carolina

Independent Accountants' Report on
Applying Agreed-Upon Procedures

May 6, 2015



Table of Contents

	<u>Page Number</u>
Independent Accountants' Report on Applying Agreed-Upon Procedures	1 - 17
Appendices	
Appendix A.1	18 - 20
Speed measuring instruments by serial number with documentation of gaps in certification during the time period January 1, 2011 to November 7, 2014.	
Appendix A.2	21
Speed measuring instruments listed by serial number that were not used for the issuance of citations during the time period January 1, 2011 to November 7, 2014, with documentation of gaps in certification.	
Appendix B	22 - 30
Officers certified for the use of speed measuring instruments during the time period January 1, 2011 to November 7, 2014, the models on which they were certified, and documentation of any gaps in their operator certification.	
Appendix C	31 - 32
Citations issued by an officer without proper operator certification for the SMI used at the time of the citation.	
Appendix D	33 - 43
Citations issued using an SMI that was without proper calibration certification at the time of the citation.	
Appendix E	44 - 50
Citations for which we cannot definitively link an officer to the vehicle they were driving at the time of the citation, and therefore, cannot identify the SMI the officer used to issue the citation.	
Appendix F	51 - 62
Citations for which we cannot definitively match the patrol vehicle driven at the time of the citation to an SMI, and therefore, are unable to verify what SMI was used to issue the citation.	



**INDEPENDENT ACCOUNTANTS' REPORT
ON APPLYING AGREED-UPON PROCEDURES**

City of Asheville
Asheville, North Carolina

We have performed the procedures listed below, which were agreed to by the City of Asheville (the "City"), solely to assist with your evaluation of the speed measuring instruments ("SMI") process in the Asheville Police Department (the "APD"). The management of the City of Asheville and the Asheville Police Department are responsible for its records, internal controls and policies. This agreed upon procedures engagement was conducted in accordance with attestation standards established by the American Institute of Certified Public Accountants. The sufficiency of these procedures is solely the responsibility of the City of Asheville and the Asheville Police Department. Consequently, we make no representation regarding the sufficiency of the procedures described below, either for the purpose for which this report has been requested or for any other purpose.

Our procedures are as follows:

Tier I:

- Confirm from available supporting records, third party confirmation or other verifiable evidence that all speed measuring instruments used for training or issuance of citations during the period beginning January 1, 2011 through the present (11/7/2014), have updated, continuous calibration certifications dating back to January 2011 through present, and document any gaps in certifications.
- Confirm from available supporting records or other verifiable evidence that all officers using RADAR equipment have updated, continuous certifications for speed measuring instruments, including the model(s) on which they are certified, from January 2011 through present, and any gaps in certification are documented.

Tier II:

- Obtain documentation of citations and charges issued where a measurement obtained from an uncalibrated speed measuring instrument formed any portion of the probable cause or reasonable suspicion for a vehicle stop that resulted in any charges during documented gaps in certification.

Tier III:

- Test the accuracy and completeness of duty rosters and other records used to match officers to vehicles and vehicles to speed measuring instruments by comparing duty rosters to fuel card records, time records, or other supporting information.

Tier IV:

- From available supporting records or other verifiable evidence, each citation obtained above should be traced from officer to vehicle to serial number of speed measuring instrument, and citations should be categorized as follows:
 - Verified that the citation was issued by an officer without proper operator certification at the time of the citation.
 - Verified that the citation was issued using a speed measuring instrument without proper calibration certification at the time of the citation.
 - Verified that the citation was issued by an officer who was certified on the speed measuring instrument that was used and the instrument used was calibration certified at the time of the citation.
 - Unable to verify what speed measuring instrument was used to issue citation.

Tier V:

- Document internal control weaknesses and issue a process improvements recommendations report.

The processes we employed to perform the agreed-upon procedures are as follows:

Tier I A Process:

We requested and obtained a list of all SMIs owned by the APD during the time period January 1, 2011 to November 7, 2014, and copies of all available SMI certification forms issued January 1, 2010 to the present. We verified the make, model and serial number listed on the certification form to the make, model and serial number of the corresponding SMI, and recorded dates of certification from available certificates for each serial number. From the listing of SMIs and certification dates we identified and documented date ranges for which there was no certification form available on file. If a certification form was not on file covering a date range for the SMI in question, we concluded that positive confirmation of SMI certification could not be located at that time and the SMI was considered to be uncertified for that period. We also requested and received positive confirmation of the accuracy and completeness of the certification records of APD speed measuring equipment for the period in question with the entities performing the SMI certifications.

It was determined that no North Carolina state statute or regulation exists specifically requiring the calibration of SMIs used for SMI operator training. Therefore, with the City's agreement, procedures were not performed to address the certifications of SMIs used for training during the period.



Tier 1 A Results:

See **Appendix A** for the list of SMIs by serial number with gaps in certification for the time period January 1, 2011 to November 7, 2014.

It should be noted that a gap in certification does not necessarily mean that the related speed measuring equipment was operated during the periods of expiration.

Tier I B Process:

We obtained a listing of all APD officers for whom SMI operator certification information was on file from January 1, 2011 to November 7, 2014, and copies of all available SMI operator certification forms issued between January 1, 2008 and the present. We verified that the officer name, certificate number, certificate issue and expiration dates, and models on which the officer was certified matched the information recorded in the corresponding listing of officers. From the listing of officers and certification dates we identified the date ranges by officer for which there was no certification form available on file. If a certification form was not on file covering a date range for the officer listed, we concluded that positive confirmation of operator certification could not be located and the officer was considered to be uncertified. We also requested and received positive confirmation of the accuracy and completeness of operator certification records of APD officers with the North Carolina Criminal Justice Education & Training Standards Commission. Additionally, purchase dates were verified for equipment acquired by the APD from January 1, 2011 to the present.

Tier I B Results:

See **Appendix B** for the list of officers certified for the use of SMIs during the time period January 1, 2011 to November 7, 2014, the models on which they are certified, and documentation of any gaps in their operator certification.

It should be noted regarding documented gaps in operator certification reported in Appendix B that an officer's inclusion on the list of officers certified for the use of speed measuring equipment indicates only that the named officers held certification for the use of speed measuring equipment at some point during the time period January 1, 2011 to November 7, 2014.

Documentation of gaps in operator certification does not indicate that all officers identified as having gaps between certifications operated speed measuring equipment during the periods when their operator certifications were expired.

Tier II Process:

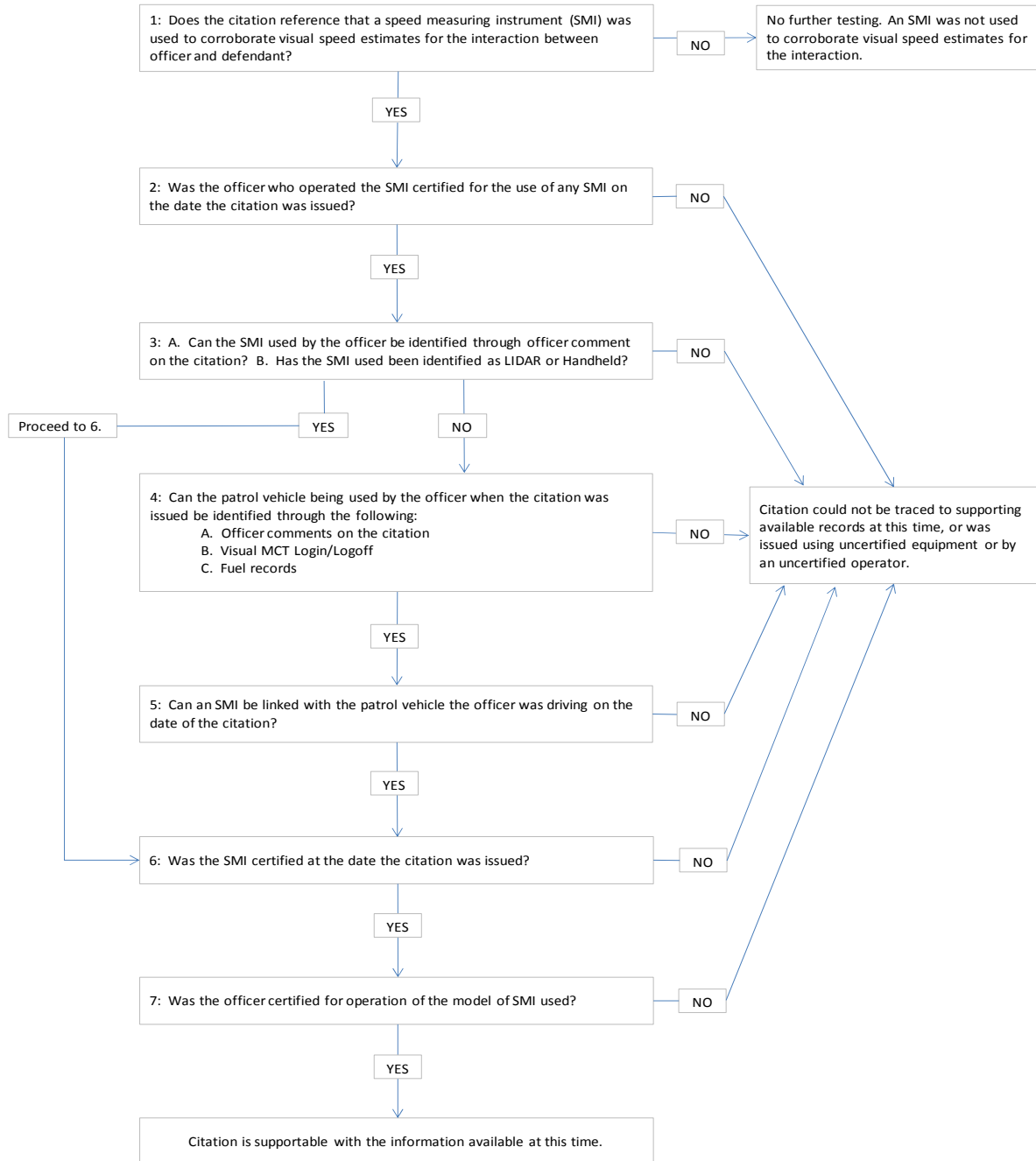
We received copies of the following citations and charges issued by the APD from January 1, 2011 through November 7, 2014:

- All citations issued and documented using the eCitation system.
- SMI-related citations issued using manual paper citations.
- Incident reports for SMI-related DWI and other charges recorded in the RMS system.



The process necessary to verify that a specific citation was issued by an officer who held a valid certification and used equipment that was also properly certified was complicated and required analysis of data from a variety of sources due to the lack of formal policy and inconsistent recordkeeping by the APD. Specific assumptions had to be made to define a clear stance on how numerous variables were approached during the testing of citations and charges. The assumptions that were adopted and the process that was designed to perform the agreed-upon procedures were agreed to by the City, and are detailed below. The decision tree immediately following illustrates the process we employed to perform Tier II procedures.

TIER II PROCESS



Tier III, Tier VI Process:

Little data existed by which to corroborate an officer's use of a specific patrol vehicle on a daily basis. It was also difficult to track a specific SMI to a patrol vehicle on a daily basis.

Three sources of data were available to match officers to vehicles: officer comments on the citation, Mobile Communication Terminal ("Visual MCT") computer login records, and fueling records. The most comprehensive and reliable source of data available to match officers to vehicles at time of citation was a log of all Visual MCT system "logins" of APD officers that was obtained from Buncombe County, who administers the Visual MCT program. Visual MCT records detailed officer name and number, login and logout date, login and logout time, and patrol vehicle number entered by each APD officer at system login. We were able to obtain these records for the entire period between January 1, 2011 and the present. If an officer identified their patrol vehicle in the officer comments section of a citation, Visual MCT login records were referenced to verify the vehicle identified in the comments field. If no vehicle was identified by the officer in the comments field, the Visual MCT login of the officer during the time and date of the citation was the primary source by which to identify the officer's patrol vehicle. If an officer did not identify the patrol vehicle in comments or at Visual MCT login, fueling records were then referenced to attempt to match officer to patrol vehicle if such records existed within 24 hours of the citation. The use of fueling records was problematic, as personal identification numbers for fueling could not be consistently verified, and some fueling records had no personal identification number associated with them. According to the APD, daily duty rosters or other supporting information did not reliably corroborate officers to patrol vehicles, officer comments, Visual MCT login records or fueling records.

The only method of documentation utilized by the APD to match patrol vehicles to permanently mounted SMIs was a notation of the patrol vehicle number on the SMI's annual certification form. This process was not consistently or uniformly followed, as patrol vehicle numbers were not identified on many SMI certification forms. Additionally, no documentation was present detailing dates of maintenance when equipment to vehicle combinations were changed, making it impossible to verify the exact dates when equipment switches between vehicles occurred.

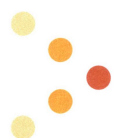
The assumptions developed and used in our procedures included the following:

Assumption 1a:

- All "Cite and Release" citations issued from the eCitation system in which the use of an SMI was used to corroborate visual speed estimates for the stop had a speed code beginning with an "R" (RADAR) or "L" (LIDAR) in the "Speed" field of the citation. The only exception was for one specific officer, who incorrectly used "A" as the speed code for all speed related stops.

Assumption 1b:

- All "A" speed codes for the officer discussed in Assumption 1a were by RADAR SMI, as it was not possible to distinguish otherwise between RADAR and LIDAR speed related stops for this officer.



Assumption 2a:

- The information recorded on each officer certification form was accurate. The officer was considered to be certified only for the features or models notated on the certification form for that date range. If more than one certificate existed for an officer for the same date range, the officer was assumed to be certified for all features indicated on each available certificate.

Assumption 2b:

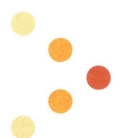
- The officer issuing the citation or charge was not always the officer who was operating the SMI. The following were acceptable ways that a second officer may be identified as having operated the SMI:
 - When an officer was named in the “Witness” field of the eCitation, the witness was the officer who operated the SMI. Determinations surrounding SMI operator certification and SMI used were based on the certification and patrol vehicle of the witness officer.
 - Issuing officers frequently named a second officer in the “Officer Comments” field of the eCitation or the incident report accompanying an RMS charge as having operated the SMI for a citation. This person was documented as the witness officer, and determinations surrounding SMI operator certification and SMI used were based on the certification and patrol vehicle of this officer.
 - Officers on patrol together in one patrol vehicle may be evidenced by Visual MCT login data meeting certain criteria. Login records of the officers had the exact same unit ID and logon time, and the primekey value of the first officer was one less than that of the second officer. Both officers had the same unit ID and logon time. If login data indicated that an uncertified citation officer was on patrol with a certified officer, the certified officer was assumed to have operated the SMI. The certified officer was accepted as the witness officer, and determinations surrounding SMI operator certification were based on this officer.

Assumption 2c:

- If an officer maintained a valid LIDAR certification and issued a citation coded as “L,” the citation was assumed to have been issued using a LIDAR on which the officer was certified.

Assumption 3a:

- If the SMI was identified by serial number, assigned APD SMI number, or by referencing the officer to whom the SMI was assigned, we assumed that this information was correct.



Assumption 3b:

- If the officer entered a speed code beginning with “L,” this indicates that a LIDAR SMI was used to corroborate visual speed estimates for the stop. We assumed that the officers were reliably using the prefix “L” in the “Speed” field when using a LIDAR SMI, unless we had been notified or the “Officer Comments” indicated otherwise.

Assumption 3c:

- Per the City Internal Auditor, all LIDAR SMIs owned by the APD were handheld. Since these units were handheld rather than permanently mounted in patrol vehicles, placing the officer in a particular patrol vehicle at the time of the citation does not help identify the SMI. Therefore, if the speed code began with “L,” we did not trace the officer to a patrol vehicle to identify the SMI used for the citation.

Assumption 4a:

- If the officer identified the patrol vehicle he or she was driving in the “Officer Comments” section of the eCitation, we assumed that this information was correct unless Visual MCT login data indicated otherwise.

Assumption 4b:

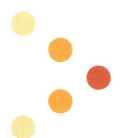
- If an officer named a patrol car number between one and five digits long not beginning with a “P,” we assume that this number referenced the corresponding “P” patrol car number.

Assumption 4c:

- If a witness officer was identified as in Assumption 2c, this was the officer we traced to verify updated certification of the SMI in use and SMI operator certification. Therefore, when a witness officer was named in a citation, this was the officer we placed in a vehicle by Visual MCT login or other records to identify pertinent information.

Assumption 4d:

- If the officer fueled a patrol vehicle within 24 hours before or after the date and time of the citation, we assumed this was the vehicle that the officer drove at the time the citation was issued. Incidences of fueling outside of the 24 hour window before and after the citation date and time were not considered to be an adequate indication that the officer was driving the vehicle on the citation date.



Assumption 5a:

- If an identified patrol vehicle number was written on an SMI Certification Form, we assumed that the SMI being certified was in that patrol vehicle on the certification date. Furthermore, we assumed that if previous or subsequent SMI Certification Forms for the same serial number SMI listed the same patrol vehicle, the SMI was in that vehicle during that time period without interruption. However, if previous or subsequent SMI Certification Forms for the same serial number SMI listed different patrol vehicles, or did not list any patrol vehicle, we could not say with certainty that the SMI was in the patrol vehicle on any specific date within the range. In this case, the citation could not be traced to supporting available records at this time. Additionally, if there was a current 2014 certification on file for an SMI, we assumed that the SMI was still in the vehicle identified on the certification form through the present date.

Assumption 5b:

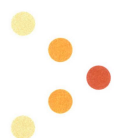
- As discussed in Assumption 5a, when previous or subsequent SMI certification forms for the same serial number SMI listed different patrol vehicles we could not assume with certainty that the SMI was in the patrol vehicle on any specific date within the range. In the case that a documentational pattern clearly reflecting change in the use of the vehicles identified on the SMI certification forms could be observed, and that change corresponded to the dates of SMI certification forms, we assumed the date on which the documentational change in vehicle use was observed was the date that the SMI changed vehicles. These changes were corroborated by asset acquisition and retirement dates and officer comments when possible.

Assumption 6a:

- When an SMI was sold to the APD by a vendor, the SMI arrived with its first certification form which was valid for 12 months. Per the City Internal Auditor, initial certification dates were within a few days of the purchase date. Therefore, if we had positive confirmation on file from a vendor that an SMI was purchased by the APD on a given date, we assumed that the stated purchase date was the first certification date even if there was no certification on file.

Assumption 6b:

- Per the City Internal Auditor, all LIDAR SMIs owned by the APD were the make and model LTI UltraLyte. All LTI UltraLytes owned by the APD were documented as continuously certified except for the time periods 11/29/2012-12/11/2012 and 05/07/2014-10/10/2014. For any citation that was identified as using a LIDAR to corroborate visual speed estimates, we assumed that the LIDAR was continuously certified except during the gap dates listed above. If a LIDAR could be specifically identified, the certification dates for that particular LIDAR were referenced for determination of certification.



Assumption 6c:

- LIDARs were assigned to districts, units and individual officers. For the LIDAR gap date 05/07/2014-10/10/2014, we assumed that officers issuing citation by LIDAR were using the LIDAR that was assigned to their division/unit or to them personally per assignment data provided by the APD. Therefore, we based the SMI certification date on the assigned LIDAR if one could be matched to the officer.

Assumption 6d:

- The date recorded at the bottom of the SMI certification form was the date on which the certification was effective. The certification was valid for a 12 month period of time from the recorded certification date.

* Assumptions 2a – 2d were applied to step #7 procedures.

The results of the above procedures and assumptions are as follows:

Tier II, Tier III, Tier IV Results:

- See **Appendix C** for a list of citations issued by an officer without proper operator certification at the time of the citation.
 - * Signed statements have been received by many officers on this list stating that they were working in tandem with another officer who was properly certified for SMI operation when the citation was issued. Further, the certified officer operated the SMI and the issuing officer wrote the citation. These statements were received subsequent to testing procedures, and are not reflected in Appendix C results.
- See **Appendix D** for a list of citations issued using an SMI that was without proper calibration certification at the time of the citation.
- See **Appendix E** for a list of citations for which we cannot definitively link an officer to the vehicle they were driving at the time of the citation, and therefore, cannot identify the SMI the officer used to issue the citation.
 - * One officer was assigned a specific patrol vehicle from 2011 to the present. This officer stated to the City that his assigned vehicle was the only vehicle he drove for the time period January 1, 2011 to November 7, 2014. This statement was not considered in our testing due to a lack of corroborating data that this was the only patrol vehicle driven by this officer during this time.
- See **Appendix F** for a list of citations for which we cannot definitively match the patrol vehicle driven at the time of the citation to an SMI, and therefore, are unable to verify what SMI was used to issue the citation.



Tier V Process Improvement Recommendations:

The APD must ensure that the following three elements are satisfied in order to enforce citations and charges in which SMIs are used to corroborate visual speed estimates for interactions between officers and defendants:

1. Speed measuring instruments must be certified at the time citations and charges are issued (N.C.G.S. § 8-50.2).
2. Officers using speed measuring instruments must be certified for the specific device used at the time citations and charges are issued (N.C.G.S. § 8-50.2).
3. Critical information identifying both operator and equipment must be completely and consistently recorded within the citation document whether the charging officer uses the eCitation system, RMS system, or manually completes a paper citation.

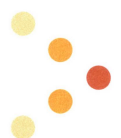
Speed Measuring Instruments

During our procedures, we noted an absence of consistent documentation and recordkeeping regarding the SMI inventory and certification process of the APD. Apparently, no database was being reliably maintained cataloging the inventory of active and retired SMIs, records of past and present certifications, or assignments of equipment to patrol vehicles, officers or units. An APD policy did exist stating that SMIs must be certified, but failed to provide guidance for compliance. No procedure or schedule appeared to be in place to identify equipment whose annual required certification had expired, or was about to expire. No formal policy appeared to have been communicated to officers establishing what specific information must be captured to identify the SMI used and the officer operating the SMI when a speed measuring device was used to corroborate visual estimates for the interaction between an officer and a defendant. Further, although the existing policy stated that the Patrol Division Commander should maintain SMI certification records, no person or position within or on behalf of APD appeared to have comprehensively monitored all aspects of the SMI process.

As a result, reconciliation of an SMI to a citation was difficult or not possible due to the lack of pertinent identifying information consistently recorded on each citation or charge. Alternate sources of information were employed to attempt to substantiate the critical identifying details of each citation and charge, many of which were ultimately not possible to positively verify. Once an SMI used for each citation or charge was definitively identified, certification of that instrument at the time of citation was verified by viewing available certification forms on file for that instrument. SMI certification is initiated by the APD and is valid for twelve months from the issue date of the certification. Although instruments were being certified during the time period, gaps between expiration and recertification dates were noted.

Recommendations:

- Management should revise, update and expand existing written policies and procedures regarding SMIs to ensure that devices are continuously certified and can be reliably located among assigned



- APD patrol vehicles, officers or units. Policies should define and uphold the expectation that all APD SMIs must be certified without interruption. Procedures should be created to provide the specific framework by which the expectations can be achieved, maintained and relied upon.
- Implement a process to record, retain, and monitor SMI information in a central database, with copies of supporting documentation being electronically retained. The SMI database and document file should be organized by a pre-established identification number that is always unique to each piece of equipment. Suggested information to be recorded in the database and retained for each SMI are detailed below:
 - Acquisition dates, retirement dates, and annual certification dates should be recorded for each SMI. Acquisition date should be supported with retained copies of the related purchase requisition, paid invoice, and initial certification form received upon purchase. Subsequent SMI certifications should be supported by retaining copies of the corresponding certification forms. The original certification form should be centrally filed, and a hard copy should be housed with the SMI. All supporting documentation should be electronically maintained by serial number of SMI or other identification number.
 - SMI assignments to vehicles should be documented for all vehicle-mounted RADARs, and assignments to officers or units should be recorded for all handheld equipment. Assignments should be updated continuously as changes are made and verified at regular intervals through internal inspection. Instruments that are unassigned or temporarily not in service should be listed as such, with a clear notation regarding where the equipment is being stored.
 - Events such as transferring a mounted instrument to a different patrol vehicle or replacing an antenna should be cataloged in the database. All events may be accompanied by copies of appropriate supporting documentation. For example, when an SMI is mounted in a vehicle or removed from a vehicle, a completed maintenance requisition should be retained to document the date of maintenance, identification number of equipment involved, and vehicle involved. Retirement or temporary non-use of an SMI should be documented on a form that is completed and retained at the time of the qualifying event. When an instrument is placed back in service, this should be formally documented as well.

An integral feature of the SMI database should be that it has some means to prompt a user when an instrument certification is approaching expiration. Prompts should appear until a certification renewal, retirement, or other action is reported for that SMI.

- Establish centralized responsibility for the consistent documentation, upkeep, and reporting of the SMI certification process. Responsibilities should include incorporating new equipment into the database by recording details on certification and assignment, and retaining copies of supporting documentation. Other responsibilities include maintaining complete and accurate records of certification information, fielding prompts for instrument recertification, coordinating timely certification of equipment with officers and vendors, and inspecting certification documentation received for completeness and compliance. All maintenance requests related to SMIs should be centrally dispositioned to ensure that pertinent information is recorded and retained. This would



ensure adequate recording and documentation of equipment that is retired or otherwise not in service.

- Establish internal auditing of compliance with new and updated SMI policies and procedures to ensure continuous certification and reliable identification of APD SMIs. Periodically, the database housing all relevant SMI information and supporting documentation should be audited by someone independent of the SMI process to assess adherence to mandated procedures. This should include scrutiny of the completeness and accuracy of information contained in the database, the timeliness of instrument certifications, the completeness of retained supporting documentation, and the accuracy of instrument assignments to vehicles, officers and units. Additionally, a physical inventory of SMIs should be taken periodically to ensure the existence of equipment and to verify the accuracy of specific assignments.

Speed Measuring Instrument Operator Certification

During our procedures, a similar environment to that of the SMI process was observed regarding the SMI operator certification process. An absence of recordkeeping, fragmented documentation and a lack of centralized responsibility concerning the SMI operator certifications process of the APD were noted. Apparently, no formal central database was being maintained cataloging the records of past and present officer certifications or the equipment each officer was specifically certified to operate. While existing policies stated that operators must be certified, no formal policy or schedule appeared to be in place to identify officers whose required triennial certification had expired, or was about to expire. Additionally, existing policies did not address acceptable protocol for situations in which officers were working in tandem or field training. No person or position within or on behalf of APD appeared to be formally responsible for monitoring the above aspects of the SMI operator certification process.

Fortunately, one lieutenant had maintained officer certification records on a voluntary basis, and was able to provide operator certification forms of APD officers related to the time period January 1, 2011 to November 7, 2014. Also, officers had largely self-managed the certification process by not issuing citations during lapses in certification and avoiding the use of equipment for which they were not certified. Any remaining gaps between the expiration dates and recertification dates of officers' operator certifications were not possible to bridge given the lack of formal recording or documentation.

Recommendations:

- Management should revise and update written policies and procedures regarding SMI operator certification to ensure that officers are continuously certified and only use equipment for which they are certified. Policies should formalize and define the expectation that all APD officers who are using SMIs must be certified for the operation of those devices without interruption. Policies should continue to state that officers only use SMIs they are certified to operate, and should be expanded to address documentation and monitoring of the SMI operator certification process. Procedures should provide the framework by which the expectations can be achieved, maintained and relied upon.



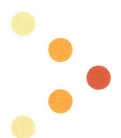
- Implement a process to record, retain, and monitor SMI operator certification information. Assignments, dates, and features should be recorded in the database and documented per officer first and last name.
 - A log of models and features for which each officer is certified should be maintained in a database by officer with certification dates. This information should be continually updated as officers earn certification for the use of new models or features of SMIs. Models and features listed may be documented with retained copies of certifications, and should be verified at regular intervals through internal inspection.

As with the SMI certification database, prompts should be established that notify a user when an officer's operator certification is nearing expiration. Prompts should appear until a certification renewal or other action is reported for that SMI operator.

- Establish centralized responsibility for the consistent documentation, upkeep, and reporting of the SMI operator certification process. Responsibilities should include maintaining the SMI operator database by incorporating newly certified officers into the database and retiring officers out of the database as they choose not to renew their certificates. Additional responsibilities include maintaining complete and accurate records of certification information, fielding prompts for operator recertification, coordinating timely certification of officers, and inspecting certification documentation received for completeness and compliance. All information regarding operator certifications of officers should be centrally dispositioned to ensure that pertinent information is recorded and retained.
- Establish internal auditing of compliance with SMI operator certification policies and procedures to ensure continuous officer certification. Periodically, the database housing all relevant SMI operator certification information and supporting documentation should be audited by someone independent of the SMI operator certification process to assess adherence to mandated procedures. This should include scrutiny of the completeness and accuracy of information contained in the database, the timeliness of operator certifications, the limitation of officers' use of equipment to models for which they are certified, and the completeness of retained supporting documentation.

Citations

During our procedures, it was noted that there appeared to be no formalized guidelines prescribing what details should be captured regarding SMI use for every charge or citation, and where these details should be recorded. Existing APD policy regarding citations did not contain guidance on the content of information to be recorded on each citation. Additionally, existing policy did not address how to document the operator of the SMI when officers were working in tandem or in field training. While officers did appear to fully complete all fields of the eCitation, the RMS incident reports, and the paper citation forms, specific data positively identifying the officer operating the SMI and the specific SMI used to corroborate visual speed estimates for the interactions between officers and defendants were most often not included within these documents. Out of 7,117 citations and charges reviewed in which an SMI was used, the SMI could be identified by information recorded solely within the citation or charge in only 147 citations.



As a result, reconciliation of an SMI to a citation was difficult or not possible due to the lack of identifying information recorded on each citation or charge. Alternative sources of information were employed to attempt to substantiate the critical identifying details of each citation and charge, many of which were ultimately not possible to positively verify.

Per North Carolina General Statute § 8-50.2, for results of speed measuring instruments to be admissible as evidence in a proceeding the following requirements, among others, must be met:

1. The operator of the instrument must hold a certificate authorizing him to operate the instrument used.
2. The speed measuring instrument must be a model that is approved for use.
3. The speed measuring instrument must have a valid certification.

Recommendations:

- Management should create and implement written policies and procedures to ensure that data is collected and documented consistently which clearly identifies SMI operator and specific equipment used in every interaction resulting in a charge or citation. This data for citations issued with an SMI consists of:
 - First and last name of officer operating the SMI
 - Vehicle of officer operating the SMI
 - Assigned identification number of the SMI used

By providing the above points of information completely and consistently, APD officers ensure that equipment and officers can always be definitively identified for verification of their certification status.

The recording of this information may seem redundant to officers. For citations issued through the eCitation system, most officers used a speed code beginning with “R” or “L” to indicate if a RADAR or LIDAR device was used to measure speed. Additionally, officers issuing citations through eCitation included the name of the officer operating the SMI in the “Witness Officer” field if a second officer besides the charging officer operated the speed measuring equipment. In practice, these methods of recording details often still leave the exact elements of “who” and “with what device” undefined. Stating the name of the officer operating the SMI in the comments or incident report, even if this is the same as the officer issuing the citation, leaves no question as to who operated the SMI. Stating the identification number of the SMI used leaves no question as to which equipment was used to measure speed in the stop. Stating the patrol vehicle provides an extra layer of detail which, when compared to Visual MCT login records and vehicle to SMI assignments, corroborates the other two pieces of data should additional verification be required for any reason. Clarity has then been provided as to which officer and SMI should have been properly certified on the date of the charge in question.



APD officers utilize three different systems to issue and record charges and citations based on the type of infraction that is being documented. These systems, eCitation, RMS and a manual option to issue paper citations, are administered by external agencies. The APD cannot modify the formatting of these documents to facilitate the capture of additional information, and therefore must work within the existing confines of each system to record additional identifying data.

- eCitation System
 - For citations issued through the eCitation system, additional data should be captured using the “Officer Comments” text box. Briefly but completely notating the name and vehicle of the officer operating the SMI and the identification number of the SMI the officer was operating in the first line of the “Officer Comments” field should clearly and adequately list the details needed to identify the officer operating the SMI and the SMI used in 75 characters or less. The “Officer Comments” field in eCitation allows the officer 450 characters in total, and any narrative entered in this field is printed on the officer copy of the citation and transmitted to NC Administrative Office of the Courts to be viewed by the District Attorney and other court representatives. Officer comments are not printed on the defendant’s copy of the citation.
- RMS System
 - Officers write an incident report which accompanies each charge recorded in the RMS system. In this report, officers recount all details of the interaction with the defendant. Officers should detail the name of the officer operating the SMI, the vehicle of the officer operating the SMI, and the identification number of the SMI used in the first lines of the incident report. Incident reports appear to have no character or size limitation.
- Paper Citations
 - The use of paper citations should be avoided for SMI stops due to the limited capability and capacity of this method to record and maintain additional information. Although anything may be written on a paper citation, the court system only documents selected fields when they enter paper citations into their system for processing. Therefore, retention of copies by the APD would be necessary to maintain documentation of identifying information captured on these citations.
- Work with the North Carolina Administrative Office of the Courts (the “NCAOC”) to develop the capability within the eCitation system whereby supervisors can review citations before they are released to the court system for processing. Then, implement a policy that supervisors must review citations and charges before they are released to the court system for processing to ensure that officer operating the SMI, patrol vehicle of the officer operating the SMI, and the specific SMI used in the stop are identified.
- Establish internal auditing of compliance with data reporting procedures to verify that officers are accurately and consistently recording necessary identifying information on every SMI related citation and charge. Independent reviewers should sample citations and charges from all officers issued through eCitation, RMS, and paper citations to ensure that the name of the officer operating the SMI, vehicle of the officer operating the SMI and the identification number of the SMI used are all detailed without fail.



Other Process Improvements

During this process we noted other processes that should be revised to improve documentation and retention of information regarding APD operations. Observations and recommendations are detailed below.

- **Patrol Vehicle Fueling:** We noted that many officers used incorrect personal identification numbers when fueling patrol vehicles, or used no personal identification numbers at all. The APD should ensure that each officer knows their correct fueling personal identification number, and that this number is entered at every fueling occurrence.
- **Visual MCT Login:** We noted that officers did not always enter the patrol vehicle they were driving when logging-on to the Visual MCT system. Formalize and communicate a policy that officers are required to enter the identification number of their vehicle at every Visual MCT system login.
- **SMI Retirement:** We noted a lack of records to support retirement dates of APD speed measuring equipment. The APD should implement a process to document the retirement of speed measuring equipment. Details recorded should include the serial number of the retired equipment, the date of retirement, and the disposition of the retired equipment. The APD should ensure that retired property is administered according to applicable surplus property regulations.
- **Patrol Vehicle Acquisition and Retirement:** Although data was available regarding vehicle acquisitions and retirements as assets of the City, no specific listing existed documenting when patrol vehicles were placed in and out of service by the APD. We believe the APD should maintain contemporaneous records documenting which vehicles are currently in their use, which SMIs are mounted in those vehicles, and dates when those vehicles are placed in and out of service by the APD.
- **Patrol Vehicle Use by Officers:** There did not appear to be a process in place to log the use of patrol vehicles by APD officers. The APD should implement a system to document the daily use of patrol vehicles. Additionally, assignments of specific vehicles to officers should be documented.

Tier V Conclusion:

Communication of new and revised policies and procedures should be made by senior management and echoed at all levels. A positive, proactive approach emphasizing why systems are being implemented should engage officers and staff. Training should be conducted with all affected personnel to ensure that they understand policies and procedures, and their roles within the SMI system. Published policies and procedures should be clearly written and easy to access for future reference by all personnel.

Implementing the recommendations detailed above should bring organization, accountability and reliability to the speed measuring instruments process of the Asheville Police Department. Updating policies and procedures should formalize and define expectations for instrument certification, operator certification, and information to capture at the time of citation. Establishing a system by which to administer SMI certifications, assignments and inventory should eliminate lapses in certification and



ensure that equipment is effectively managed. Instituting a structure to manage operator certifications should ensure that all officers who use speed measuring equipment are certified and that certification information is properly documented. Standardizing what information should be documented on every citation or charge regarding the use of an SMI and where this data should be documented should assure that details needed to confirm certification for every charge are readily available. Establishing central responsibility for the SMI process should promote implementation, oversight and ongoing maintenance. Internal auditing and independent review should provide confidence that there has been compliance with policies and procedures, and that data and documentation are accurately and effectively being maintained. As a result, the APD should be able to consistently meet the qualifications for results of speed measuring instruments to be admissible as specified in North Carolina General Statute § 8-50.2.

In recent communications with the City of Asheville and the APD, it has been noted that the APD is already undertaking the process of revising existing policies and procedures related to the SMI process. Proposed revisions specifically address documentation and monitoring of the SMI certification process, and adequate documentation of information identifying SMI used and officer operating SMI within every citation. We applaud these efforts and encourage the implementation of other recommendations in this report.

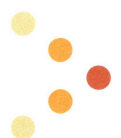
As detailed in the above report, due to a lack of available records and inconsistent documentation specific assumptions had to be made to define a clear stance on how numerous variables were approached during the testing of citations and charges. The assumptions that were adopted were agreed to by the City. Additionally, statements have been made to the City by officers providing additional information regarding individual citations. The results of this report have not been modified based on these subsequent officer statements. These positions should be noted when considering the results of this engagement. Furthermore, should additional documentation or supporting data not previously identified be located by the City or the APD, the results of our procedures could change significantly.

We were not engaged to, and did not conduct an audit, the objective of which would be the expression of an opinion on the records of the Asheville Police Department. Accordingly, we do not express such an opinion. Had we performed additional procedures, other matters might have come to our attention that would have been reported to you.

This report is intended solely for the information and use of the City of Asheville, and is not intended to be, and should not be, used by anyone other than City of Asheville and the Asheville Police Department.

Johnson Price Sprinkle PA

May 6, 2015



Speed measuring instruments by serial number with documentation of gaps in certification during the time period January 1, 2011 to November 7, 2014.

Make & Model	Serial Number	Gap Dates
Kustom Signals Golden Eagle	E11020	1/1/2011 - 3/6/2011; 3/7/2012 - 4/23/2013; 4/24/2014 - 11/7/2014
	E11088	1/1/2011 - 8/7/2013; 8/8/2014 - 11/7/2014
	E11089	1/1/2011 - 3/16/2011; 3/17/2012 - 7/8/2012; 7/9/2013 - 8/7/2013; 8/8/2014 - 10/8/2014
	E15766	1/1/2011 - 1/6/2013; 1/7/2014 - 3/20/2014
	E32774	6/9/2012 - 10/15/2012
	E32775	6/7/2012 - 10/16/2012
	E32776	6/16/2011 - 10/15/2012
	E32777	6/7/2012 - 10/17/2012
	E32778	6/15/2012 - 10/15/2012
	E33047	1/1/2011 - 3/6/2011; 3/7/2012 - 4/23/2012; 4/24/2013 - 5/2/2013
	E33050	1/1/2011 - 3/6/2011; 3/7/2012 - 3/29/2012; 3/30/2013 - 4/10/2013; 4/11/2014 - 10/29/2014
	E33064	1/1/2011 - 3/6/2011; 3/7/2012 - 4/3/2012; 4/4/2014 - 5/1/2014
Kustom Signals Pro- 1000	DS10669	1/7/2011 - 2/21/2011; 2/22/2012 - 2/26/2012; 2/13/2014 - 9/17/2014
	DS10720	1/1/2011 - 3/20/2011; 3/21/2012 - 2/13/2013; 2/14/2014 - 9/8/2014
	DS10721	6/7/2012 - 3/4/2013; 3/5/2014 - 4/1/2014
	DS10724	6/2/2011 - 6/6/2011; 6/7/2012 - 6/17/2012; 6/7/2014 - 7/28/2014
	DS10725	7/9/2011 - 7/25/2011; 7/26/2012 - 8/5/2012; 2/11/2014 - 3/2/2014
	DS10765	7/14/2011 - 7/18/2011; 7/19/2012 - 7/31/2012; 7/29/2014 - 10/21/2014
	DS10775	2/1/2011 - 3/3/2011; 7/26/2012 - 7/31/2012; 7/29/2014 - 9/16/2014
	DS10786	6/7/2012 - 6/13/2012; 6/6/2014 - 9/8/2014
	DS10792	1/1/2011 - 3/15/2011; 3/16/2012 - 4/26/2012; 4/27/2013 - 3/19/2014
	DS11921	6/7/2012 - 6/13/2012; 6/6/2014 - 9/8/2014
	DS11930	6/7/2012 - 6/13/2012; 6/6/2014 - 11/7/2014
	DS14934	7/7/2011 - 7/18/2011; 7/19/2012 - 7/28/2013; 7/29/2014 - 9/9/2014
	DS14935	6/30/2011 - 11/20/2011; 11/21/2012 - 1/3/2013; 1/4/2014 - 3/20/2014
	DS14972	7/14/2011 - 7/18/2011; 7/19/2012 - 8/12/2012; 7/29/2014 - 9/8/2014
	DS14973	7/14/2011 - 7/18/2011; 7/19/2012 - 7/31/2012; 7/29/2014 - 9/8/2014
	DS15012	7/19/2012 - 8/5/2012; 8/5/2014 - 9/3/2014
	DS15013	9/14/2011 - 11/20/2011; 11/21/2012 - 1/3/2013; 1/4/2014 - 11/7/2014
	DS15014	5/30/2013 - 6/5/2013; 6/6/2014 - 9/16/2014
	DS15016	9/14/2011 - 1/18/2012; 1/19/2013 - 1/22/2013; 1/23/2014 - 3/20/2014
	DS15017	1/1/2011 - 3/3/2011; 3/4/2012 - 10/28/2014
	DS15018	6/7/2012 - 2/3/2013; 2/4/2014 - 11/7/2014
	DS19829	7/12/2012 - 7/19/2012; 7/10/2014 - 7/23/2014
	DS19832	7/7/2011 - 7/18/2011; 7/19/2012 - 7/31/2012; 7/29/2014 - 11/7/2014
	DS19835	6/7/2012 - 8/21/2012; 6/18/2014 - 9/3/2014
	DS19836	7/6/2011 - 11/20/2011; 11/21/2012 - 1/6/2014
	DS19838	7/14/2011 - 7/18/2011; 7/19/2012 - 7/31/2012; 7/29/2014 - 10/21/2014
	DS21139	6/7/2012 - 6/13/2012; 6/6/2014 - 11/7/2014
DS21140	6/30/2011 - 11/16/2011; 11/17/2012 - 11/7/2014	
DS21141	6/7/2012 - 6/20/2012; 6/6/2014 - 9/8/2014	



Make & Model	Serial Number	Gap Dates - continued
Kustom Signals Pro- 1000	DS21142	6/30/2011 - 7/12/2011; 7/13/2012 - 1/3/2013; 1/4/2014 - 11/7/2014
	DS21143	7/14/2011 - 7/18/2011; 7/19/2012 - 7/31/2012; 7/29/2014 - 9/8/2014
	DS24739	6/30/2011 - 11/16/2011; 11/17/2012 - 1/3/2013; 1/4/2014 - 11/7/2014
	DS24740	6/4/2013 - 6/5/2013; 6/6/2014 - 9/3/2014
	DS24741	1/1/2011 - 2/7/2013; 2/8/2014 - 3/4/2014
	DS24742	7/14/2011 - 7/18/2011; 7/19/2012 - 7/31/2012; 7/29/2014 - 9/8/2014
	DS24743	5/30/2013 - 6/5/2013
	DS24744	7/7/2011 - 7/18/2011; 7/19/2012 - 7/31/2012; 7/29/2014 - 10/26/2014
	DS24745	3/4/2012 - 1/6/2013; 1/7/2014 - 9/8/2014
	DS24746	6/10/2011 - 1/22/2012; 1/23/2013 - 3/27/2013; 3/28/2014 - 9/8/2014
	DS24747	7/7/2011 - 7/18/2011; 7/19/2012 - 7/31/2012; 7/29/2014 - 9/8/2014
	DS24748	10/10/2011 - 3/18/2012; 3/4/2014 - 11/7/2014
	DS24749	7/7/2011 - 10/26/2011; 10/27/2012 - 11/27/2012; 7/29/2014 - 10/15/2014
	DS24751	6/7/2012 - 6/13/2012; 6/6/2014 - 9/8/2014
Kustom Signals Raptor RP-1	RP05856	10/11/2012 - 10/15/2012
	RP05884	1/7/2014 - 3/13/2014
	RP05885	1/7/2014 - 3/2/2014
	RP05886	1/7/2014 - 3/2/2014
	RP05887	1/7/2014 - 9/16/2014
	RP05888	1/7/2014 - 9/8/2014
	RP05889	1/7/2014 - 9/8/2014
	RP05890	1/7/2014 - 9/3/2014
	RP05891	1/7/2014 - 3/20/2014
	RP05892	1/7/2014 - 3/20/2014
	RP05893	1/7/2014 - 3/31/2014
	RP09748	11/12/2013 - 9/8/2014
	RP11472	5/13/2014 - 9/8/2014
	RP11473	5/13/2014 - 10/5/2014
	RP11474	5/13/2014 - 12/21/2014
	RP11475	None
	RP11476	5/13/2014 - 9/8/2014
	RP11477	5/13/2014 - 11/5/2014
	RP11478	5/13/2014 - 9/8/2014
	RP11479	5/13/2014 - 9/8/2014
RP11480	5/13/2014 - 9/8/2014	
RP11481	5/13/2014 - 9/16/2014	
RP11911	7/3/2014 - 9/8/2014	
Kustom Signals Tracker	TK01837	3/7/2014 - 3/18/2014
LTI Ultralyte 200 LR	UX020511	11/29/2012-12/11/2012



Make & Model	Serial Number	Gap Dates - continued
LTI Ultralyte LR B	UX017106	None
	UX020509	11/29/2012-12/11/2012
	UX020510	11/29/2012-12/11/2012
	UX022814	11/29/2012-12/11/2012
	UX025373	None
	UX025384	None
	UX025385	None
	UX027065	5/7/2014 - 10/10/2014
	UX027069	5/7/2014 - 10/10/2014
	UX027938	None
	UX028040	None
	UX028050	None
MPH Industries Z35	HH5669000001	6/7/2012 - 11/7/2014
	HH5669000002	6/7/2012 - 11/7/2014
	HH5669000003	1/1/2011 - 11/7/2014
	HH5669000004	1/1/2011 - 11/7/2014
	HH5669000005	1/1/2011 - 3/17/2011; 3/18/2012 - 11/7/2014
	HH5669000006	6/2/2011 - 1/11/2012; 1/12/2013 - 11/7/2014
	HH5669000007	1/1/2011 - 5/24/2011; 5/25/2012 - 11/7/2014

A gap in certification does not necessarily mean that the related speed measuring equipment was operated during the periods of expiration.



Speed measuring instruments listed by serial number that were not used for the issuance of citations during the time period January 1, 2011 to November 7, 2014, with documentation of gaps in certification.

Make & Model	Serial Number	Gap Dates
Kustom Signals Pro-1000	PR29988	1/1/2011 - 12/21/2011; Per APD, traded-in to Kustom Signals 12/21/2011
	PR29996	7/9/2011 - 12/21/2011; Per APD, traded-in to Kustom Signals 12/21/2011
	PR30041	1/1/2011 - 12/21/2011; Per APD, traded-in to Kustom Signals 12/21/2011
MPH Industries K55 Doppler	35292	1/1/2011 - 11/7/2014; Per APD, most likely destroyed in 2012
	K55269000043	1/1/2011 - 11/7/2014; Per APD, most likely destroyed in 2012
	K55269000053	1/1/2011 - 11/7/2014; Per APD, most likely destroyed in 2012
	K55269000054	1/1/2011 - 11/7/2014; Per APD, most likely destroyed in 2012
MPH Industries Python Series II	PYT546004721	6/10/2011 - 11/7/2014; Per APD, out of service (date not known)
Traffic Safety System Vascar Plus	1019	6/10/2011 - 11/7/2014; Per APD, most likely destroyed in 2012
	1091	1/1/2011 - 11/7/2014; Per APD, most likely destroyed in 2012
	2951	1/1/2011 - 11/7/2014; Per APD, most likely destroyed in 2012
	3889	1/7/2011 - 11/7/2014; Per APD, most likely destroyed in 2012
	4294	1/1/2011 - 11/7/2014; Per APD, most likely destroyed in 2012
	4314	1/1/2011 - 11/7/2014; Per APD, out of service (date not known)
	4318	1/1/2011 - 11/7/2014; Per APD, most likely destroyed in 2012
	4319	1/1/2011 - 11/7/2014; Per APD, most likely destroyed in 2012
	4516	1/1/2011 - 11/7/2014; Per APD, out of service (date not known)
	4551	6/10/2011 - 11/7/2014; Per APD, most likely destroyed in 2012
	6101	1/1/2011 - 11/7/2014; Per APD, most likely destroyed in 2012
	6117	1/1/2011 - 11/7/2014; Per APD, most likely destroyed in 2012
	6121	1/1/2011 - 11/7/2014; Per APD, most likely destroyed in 2012
	6123	1/1/2011 - 11/7/2014; Per APD, most likely destroyed in 2012
	6292	1/1/2011 - 11/7/2014; Per APD, most likely destroyed in 2012
	6321	1/1/2011 - 11/7/2014; Per APD, most likely destroyed in 2012
	6396	1/1/2011 - 11/7/2014; Per APD, most likely destroyed in 2012
	6618	1/1/2011 - 11/7/2014; Per APD, most likely destroyed in 2012
	6718	1/1/2011 - 6/7/2011; 6/8/2012 - 11/7/2014
	6742	1/1/2011 - 11/7/2014; Per APD, most likely destroyed in 2012
728626	1/1/2011 - 11/7/2014; Per APD, most likely destroyed in 2012	
747236	1/1/2011 - 11/7/2014; Per APD, out of service (date not known)	
Traffic Safety System Vascar Plus III	6712	6/10/2011 - 11/7/2014; Per APD, most likely destroyed in 2012
	8265	6/16/2011 - 11/7/2014; Per APD, most likely destroyed in 2012
	8266	6/16/2011 - 11/7/2014; Per APD, most likely destroyed in 2012
	8267	6/16/2011 - 11/7/2014; Per APD, most likely destroyed in 2012
	8268	1/1/2011 - 11/7/2014; Per APD, most likely destroyed in 2012
	8269	1/1/2011 - 3/17/2011; 3/18/2012 - 11/7/2014; Per APD, most likely destroyed in 2012

There was no evidence that the SMIs included in this list were operated during the time period January 1, 2011 to November 7, 2014. The above SMIs are believed to be retired, but due to a lack of recordkeeping regarding retirement dates of SMIs, no information was available to corroborate retirement dates of SMIs.



Officers certified for the use of speed measuring instruments during the time period January 1, 2011 to November 7, 2014, the models on which they are certified, and documentation of any gaps in their operator certification.

Legend

Kustom Signals Pro-1000	A	MPH K-55	H
Kustom Signals Raptor RP-1	B	MPH Python Series II	I
MPH Z-25/35	C	Vascar Plus	J
Laser Technologies Ultralight LR B	D	Vascar Plus (T-D)	K
Laser Technologies Ultralight 200 LR B	E	Vascar Plus III (T-D)	L
Kustom Signals Golden Eagle II	F	Traffic Safety Vascar Plus III (T-D)	M
Kustom Signals Golden Eagle	G	Kustom Signals Tracker	N

Officer Name	Issue Date	Expiration Date	A	B	C	D	E	F	G	H	I	J	K	L	M	N
Allen, James	3/24/2008	3/24/2011	X		X		X									
	Gap Date(s): 3/24/2011 - 11/7/2014															
Allen, Michael	6/21/2010	6/21/2013	X	X		X	X									
	5/28/2013	5/28/2016		X		X										
	Gap Date(s): None															
Anderson, Brian	7/21/2009	7/21/2012	X													
	6/25/2012	6/25/2015	X								X					
	Gap Date(s): None															
Ball, Albert	10/20/2008	10/20/2011	X		X											
	10/18/2011	10/18/2014	X			X										
	11/12/2014	11/12/2017	X	X		X										
	Gap Date(s): 10/18/2014 - 11/7/2014															
Ball, Nathan	10/20/2008	10/20/2011	X		X											
	10/19/2011	10/19/2014	X													
	Gap Date(s): 10/19/2014 - 11/7/2014															
Ballard, John	5/19/2008	5/19/2011	X		X											
	5/27/2011	5/27/2014	X													
	Gap Date(s): 5/19/2011 - 5/26/2011; 5/27/2014 - 11/7/2014															
Bilbrey, Joseph	10/20/2008	10/20/2011	X		X											
	5/27/2011	5/27/2014	X	X												
	Gap Date(s): 5/27/2014 - 11/7/2014															
Bingaman, Robert	3/24/2008	3/24/2011			X	X										
	3/21/2011	3/21/2014	X	X	X	X			X							
	Gap Date(s): None															
Boone, Torian	3/21/2012	3/21/2015		X				X								
	Gap Date(s): 1/1/2011 - 3/20/2012															
Booth, Justin	10/20/2008	10/20/2011	X		X											
	10/19/2011	10/19/2014	X													
	12/22/2014	12/22/2017	X	X												
	Gap Date(s): 10/19/2014 - 11/7/2014															



APPENDIX B

Officer Name	Issue Date	Expiration Date	A	B	C	D	E	F	G	H	I	J	K	L	M	N
Bowman, Kenneth	2/23/2009	2/23/2012	X		X											
	Gap Date(s): 2/23/2012 - 11/7/2014															
Boyce, James	2/1/2010	2/1/2013	X													
	Gap Date(s): 2/1/2013 - 11/7/2014															
Bridges, Chad	7/21/2009	7/21/2012	X													
	Gap Date(s): 7/21/2012 - 11/7/2014															
Brigman, Todd	3/26/2010	3/26/2013	X			X										
	2/21/2013	2/21/2016	X			X										
	Gap Date(s): None															
Britt, Daniel	2/1/2010	2/1/2013	X			X										
	Gap Date(s): 2/1/2013 - 11/7/2014															
Brooks, Sean	3/24/2008	3/24/2011	X		X											
	3/21/2011	3/21/2014	X			X										
	Gap Date(s): 3/21/2014 - 11/7/2014															
Brown, Jerry	10/20/2011	10/20/2014	X													
	Gap Date(s): 1/1/2011 - 10/19/2011; 10/20/2014 - 11/7/2014															
Brown, Jonathan	4/13/2009	4/13/2012	X													
	5/7/2012	5/7/2015	X													
	Gap Date(s): 4/13/2012 - 5/6/2012															
Bruchon, David	6/1/2012	6/1/2015	X	X		X										
	Gap Date(s): 1/1/2011 - 5/31/2012															
Buchanan, Amanda	2/23/2009	2/23/2012	X			X						X				
	4/2/2012	4/2/2015	X			X										
	Gap Date(s): 2/23/2014 - 4/1/2012															
Bunn, Wilson	12/10/2014	12/10/2017	X	X												
	Gap Date(s): 1/1/2011 - 11/7/2014															
Burge, Orlando	7/1/2014	7/1/2017	X	X												
	Gap Date(s): 1/1/2011 - 6/30/2014															
Burleson, Joshua	1/28/2013	1/28/2016	X			X										
	Gap Date(s): 1/1/2011 - 1/27/2013															
Burton, Cory	2/1/2010	2/1/2013	X													
	6/27/2013	6/27/2016		X		X										
	Gap Date(s): 2/1/2013 - 6/26/2013															
Byers, Christopher	10/14/2011	10/14/2014	X			X	X									
	8/4/2014	8/4/2017		X		X										
	Gap Date(s): 1/1/2011 - 10/13/2011															
Cabe, Adam	5/21/2013	5/21/2016	X	X		X										
	Gap Date(s): 1/1/2011 - 5/20/2013															
Carswell, Willie	11/16/2011	11/16/2014	X													
	Gap Date(s): 1/1/2011 - 11/15/2011															
Cecil, James	11/25/2008	11/25/2011	X													
	Gap Date(s): 11/25/2011 - 11/7/2014															
Cloer, Rodney	10/20/2008	10/20/2011	X		X	X										
	10/18/2011	10/18/2014	X			X										
	7/7/2014	7/7/2017	X	X		X										
	Gap Date(s): None															



APPENDIX B

Officer Name	Issue Date	Expiration Date	A	B	C	D	E	F	G	H	I	J	K	L	M	N
Cohen, David	4/8/2013	4/8/2016	X	X		X										
	Gap Date(s): 1/1/2011 - 4/7/2013															
Coon, Stephen	8/11/2008	8/11/2011	X		X							X				
	5/27/2011	5/27/2014	X													
	Gap Date(s): 5/27/2014 - 11/7/2014															
Coward, Evan	3/26/2010	3/26/2013	X													
	7/25/2013	7/25/2016	X													
	Gap Date(s): 3/26/2013 - 7/24/2013															
Craig, Matthew	7/1/2014	7/1/2017	X	X												
	Gap Date(s): 1/1/2011 - 6/30/2014															
Creasman, Kevin	5/22/2012	5/22/2015	X	X												
	Gap Date(s): 1/1/2011 - 5/21/2012															
Crisp, Russell	2/23/2009	2/23/2012				X			X			X				
	4/2/2012	4/2/2015	X	X		X			X							
	Gap Date(s): 2/23/2012 - 4/1/2012															
Davidson, Andrew	5/24/2010	5/24/2013	X													
	Gap Date(s): 5/24/2013 - 11/7/2014															
Davis, Sean	3/24/2008	3/24/2011	X		X											
	3/21/2011	3/21/2014	X	X		X										
	3/31/2014	3/31/2017	X	X		X										
	Gap Date(s): 3/21/2014 - 3/30/2014															
Dennis, Christopher	7/7/2014	7/7/2017	X	X		X										
	Gap Date(s): 1/1/2011 - 7/6/2014															
Derrick, Jonathan	3/24/2008	3/24/2011	X		X		X									
	3/21/2011	3/21/2014	X	X	X	X			X							
	2/28/2014	2/28/2017		X		X			X							
	Gap Date(s): None															
Dillingham, James	2/1/2010	2/1/2013	X													
	Gap Date(s): 2/1/2013 - 11/7/2014															
Dodd, Ronnie	5/24/2010	5/24/2013	X			X										
	3/31/2014	3/31/2017		X		X										
	Gap Date(s): 5/24/2013 - 3/30/2014															
Donahue, Marjory (Pigman, Meg)	11/25/2008	11/25/2011	X													
	10/26/2011	10/26/2014		X		X	X		X							
	8/21/2014	8/21/2017		X		X	X		X							
	Gap Date(s): None															
Duyck, Travis	3/26/2010	3/26/2013	X													
	2/21/2013	2/21/2016	X	X												
	Gap Date(s): None															
Eberhardt, Donald	5/24/2010	5/24/2013	X	X		X			X					X		
	4/24/2013	4/24/2016				X			X							
	Gap Date(s): None															
Edmonds, Tracy	5/21/2009	5/21/2012	X													
	5/7/2012	5/7/2015	X	X												
	Gap Date(s): None															



APPENDIX B

Officer Name	Issue Date	Expiration Date	A	B	C	D	E	F	G	H	I	J	K	L	M	N
Escobedo, Sonia	5/21/2009	5/21/2012		X		X			X				X			
	5/7/2012	5/7/2015		X		X			X							
	Gap Date(s): None															
Foley, Sarah	10/20/2008	10/20/2011	X		X											
	10/19/2011	10/19/2014	X													
	Gap Date(s): 10/19/2014 - 11/7/2014															
Fournier, Andrew	3/26/2010	3/26/2013	X		X											
	2/21/2013	2/21/2016	X													
	Gap Date(s): None															
Fowler, Ann	5/21/2009	5/21/2012				X			X							
	5/7/2012	5/7/2015		X		X			X							
	Gap Date(s): None															
Freelan, Brian	8/11/2008	8/11/2011	X		X		X					X		X		
	5/27/2011	5/27/2014	X		X		X						X			
	Gap Date(s): 5/27/2014 - 11/7/2014															
French, James	6/1/2012	6/1/2015	X	X												
	Gap Date(s): 1/1/2011 - 5/31/2012															
Fry, Scott	3/24/2008	3/24/2011	X		X		X									
	3/21/2011	3/21/2014	X	X		X			X							
	2/28/2014	2/28/2017		X		X			X							
	Gap Date(s): None															
Gearles, Nathaniel	5/25/2012	5/25/2015	X	X												
	Gap Date(s): 1/1/2011 - 5/24/2012															
Gillespie, Brian	12/3/2009	12/3/2012	X													
	Gap Date(s): 12/3/2012 - 11/7/2014															
Greco, Carl	10/20/2008	10/20/2011	X		X											
	3/21/2011	3/21/2014	X	X		X										
	3/31/2014	3/31/2017	X	X		X										
	Gap Date(s): 3/21/2014 - 3/30/2014															
Greene, Aubrey	6/4/2012	6/4/2015	X	X												
	Gap Date(s): 1/1/2011 - 6/3/2012															
Greene, Dewayne	8/11/2008	8/11/2011	X		X											
	5/27/2011	5/27/2014	X		X											
	Gap Date(s): 5/27/2014 - 11/7/2014															
Griffin, Brien	2/23/2009	2/23/2012										X				
	1/28/2013	1/28/2016	X													
	Gap Date(s): 2/23/2012 - 1/27/2013															
Halford, Eric	3/24/2008	3/24/2011	X		X											
	3/21/2011	3/21/2014	X	X												
	2/28/2014	2/28/2017		X												
	Gap Date(s): None															
Haralson, Travis	5/24/2010	5/24/2013	X													
	3/27/2014	3/27/2017		X												
	Gap Date(s): 5/24/2013 - 3/26/2014															
Hawkins, Janice	2/23/2009	2/23/2012	X		X											
	4/2/2012	4/2/2015	X	X												
	Gap Date(s): 2/23/2012 - 4/1/2012															



APPENDIX B

Officer Name	Issue Date	Expiration Date	A	B	C	D	E	F	G	H	I	J	K	L	M	N
Hazlett, Kimberly	5/19/2008	5/19/2011	X													
	5/27/2011	5/27/2014	X													
	Gap Date(s): 5/19/2011 - 5/26/2011; 5/27/2014 - 11/7/2014															
Hendricks, Steven	3/24/2008	3/24/2011	X		X											
	5/27/2011	5/27/2014	X													
	Gap Date(s): 3/24/2011 - 5/26/2011; 5/27/2014 - 11/7/2014															
Hensley, Michael	5/19/2008	5/19/2011	X		X											
	5/27/2011	5/27/2014	X													
	Gap Date(s): 5/19/2011 - 5/26/2011; 5/27/2014 - 11/7/2014															
Hill, Joshua	12/30/2010	12/30/2013				X			X							
	8/22/2013	8/22/2016		X		X			X							
	Gap Date(s): None															
Hine, Heather	11/14/2011	11/14/2014	X													
	7/29/2014	7/29/2017	X													
	Gap Date(s): 1/1/2011 - 11/13/2011															
Hogan, Brian	5/24/2010	5/24/2013	X													
	Gap Date(s): 5/24/2013 - 11/7/2014															
Hunter, Jason	7/14/2014	7/14/2017	X	X												
	Gap Date(s): 1/1/2011 - 7/13/2014															
Ingle, Ricky	8/11/2008	8/11/2011	X													
	5/27/2011	5/27/2014	X													
	Gap Date(s): 5/27/2014 - 11/7/2014															
Johnson, Todd	5/21/2012	5/21/2015	X	X												
	Gap Date(s): 1/1/2011 - 5/20/2012															
Jones, Joseph	3/24/2008	3/24/2011	X		X											
	Gap Date(s): 3/24/2011 - 11/7/2014															
Jones, Owen Curtis	6/17/2008	6/17/2011	X		X	X		X	X	X	X	X			X	X
	6/22/2011	6/22/2014				X										
	6/18/2014	6/18/2017	X	X	X			X	X		X					X
	Gap Date(s): 6/17/2011 - 6/21/2011															
Jones, Travis	5/19/2008	5/19/2011	X		X											
	5/27/2011	5/27/2014	X	X	X	X										
	5/27/2014	5/27/2017	X	X		X										
	Gap Date(s): 5/19/2011 - 5/26/2011															
Kanupp, Joseph	2/23/2009	2/23/2012	X		X											
	11/14/2012	11/14/2015	X													
	Gap Date(s): 2/23/2012 - 11/13/2012															
Kuhn, Christopher	2/23/2012	2/23/2015	X			X										
	Gap Date(s): 1/1/2011 - 2/22/2012															
Lackey, Melissa	3/1/2013	3/1/2016	X	X				X								
	Gap Date(s): 1/1/2011 - 2/28/2013															
Latcham, Gregory	3/24/2008	3/24/2011			X											
	Gap Date(s): 3/24/2011 - 11/7/2014															
Loveland, Craig	9/2/2008	9/2/2011			X				X							
	Gap Date(s): 9/2/2011 - 11/7/2014															
Loveland, Diana	9/18/2012	9/18/2015	X		X											
	Gap Date(s): 1/1/2011 - 9/17/2012															



APPENDIX B

Officer Name	Issue Date	Expiration Date	A	B	C	D	E	F	G	H	I	J	K	L	M	N
Ludescher, Christina	2/1/2010	2/1/2013				X			X					X		
	Gap Date(s): 2/1/2013 - 11/7/2014															
Maltby, Brett	8/11/2008	8/11/2011	X		X											
	5/27/2011	5/27/2014	X													
	Gap Date(s): 5/27/2014 - 11/7/2014															
McCall, Chadwick	3/24/2008	3/24/2011	X		X											
	3/21/2011	3/21/2014	X		X											
	Gap Date(s): 3/21/2014 - 11/7/2014															
McCaskill, Boyd	3/26/2010	3/26/2013	X													
	Gap Date(s): 3/26/2013 - 11/7/2014															
McClanahan, Michael	7/21/2009	7/21/2012	X		X	X										
	4/2/2012	4/2/2015	X	X	X	X										
	Gap Date(s): None															
McCulloch, Keith	5/24/2010	5/24/2013	X	X		X										
	Gap Date(s): 5/24/2013 - 11/7/2014															
McCurry, Darrell	4/13/2009	4/13/2012	X													
	4/21/2012	4/21/2015	X	X												
	Gap Date(s): 4/13/2012 - 4/20/2012															
Meindl, Joshua	10/25/2011	10/25/2014	X													
	Gap Date(s): 1/1/2011 - 10/24/2011; 10/25/2014 - 11/7/2014															
Messer, Keith	7/16/2014	7/16/2017	X	X												
	Gap Date(s): 1/1/2011 - 7/15/2014															
Metcalf, Matthew	10/10/2014	10/10/2017	X	X												
	Gap Date(s): 1/1/2011 - 10/9/2014															
Miller, Quentin	7/21/2009	7/21/2012	X		X											
	Gap Date(s): 7/21/2012 - 11/7/2014															
Mitchell, Nicholas	10/20/2008	10/20/2011	X		X											
	10/19/2011	10/19/2014	X													
	Gap Date(s): 10/19/2014 - 11/7/2014															
Moore, Brandon	10/7/2009	10/7/2012	X													
	1/28/2013	1/28/2016	X			X										
	Gap Date(s): 10/7/2012 - 1/27/2013															
Morgan, Brandon	5/24/2010	5/24/2013	X													
	Gap Date(s): 5/24/2013 - 11/7/2014															
Morgan, Jonathan	10/3/2008	10/3/2011	X		X											
	10/19/2011	10/19/2014	X													
	4/14/2014	4/14/2017	X	X												
	Gap Date(s): 10/3/2011 - 10/18/2011															
Morrow, Christopher	4/26/2013	4/26/2016	X	X		X										
	Gap Date(s): 1/1/2011 - 4/25/2013															
Murfin, Philip	7/21/2009	7/21/2012	X		X											
	Gap Date(s): 7/21/2012 - 11/7/2014															
Muse, Jeffry	8/11/2008	8/11/2011				X			X							
	5/27/2011	5/27/2014		X		X			X							
	5/27/2014	5/27/2017				X			X							
	Gap Date(s): None															



APPENDIX B

Officer Name	Issue Date	Expiration Date	A	B	C	D	E	F	G	H	I	J	K	L	M	N
Onderdonk, Dane	7/7/2014	7/7/2017	X	X												
	Gap Date(s): 1/1/2011 - 7/6/2014															
Overbey, Matthew	10/25/2013	10/25/2016	X	X				X								
	Gap Date(s): 1/1/2011 - 10/24/2013															
Parker, Shawn	2/14/2011	2/14/2014						X								
	3/27/2014	3/27/2017		X												
	Gap Date(s): 1/1/2011 - 2/13/2011; 2/14/2014 - 3/26/2014															
Patton, Gregory	8/11/2008	8/11/2011	X		X							X				
	Gap Date(s): 8/11/2011 - 11/7/2014															
Piper, Scott	5/24/2010	5/24/2013	X													
	Gap Date(s): 5/24/2013 - 11/7/2014															
Pruett, Scott	5/19/2008	5/19/2011			X				X						X	
	5/27/2011	5/27/2014		X	X	X			X				X			
	3/31/2014	3/31/2017		X		X		X	X							
	Gap Date(s): 5/19/2011 - 5/26/2011															
Radford, John	10/18/2013	10/18/2016	X	X				X								
	Gap Date(s): 1/1/2011 - 10/17/2013															
Radford, Kelly	12/4/2009	12/4/2012	X													
	11/14/2012	11/14/2015	X													
	Gap Date(s): None															
Raines, Sharlene	3/24/2008	3/24/2011	X		X											
	3/21/2011	3/21/2014	X													
	2/28/2014	2/28/2017		X												
	Gap Date(s): None															
Rhinehart, Tanner	5/24/2010	5/24/2013	X						X							
	1/13/2014	1/13/2017		X					X							
	Gap Date(s): 5/24/2013 - 1/12/2014															
Rice, Elizabeth	5/27/2011	3/21/2014	X													
	Gap Date(s): 1/1/2011 - 5/26/2011; 3/21/2014 - 11/7/2014															
Rice, Sy	7/21/2009	7/21/2012	X										X			
	Gap Date(s): 7/21/2012 - 11/7/2014															
Riddle, Stephen	7/21/2009	7/21/2012	X													
	Gap Date(s): 7/21/2012 - 11/7/2014															
Roach, Adam	2/23/2009	2/23/2012	X													
	5/7/2012	5/7/2015	X	X												
	Gap Date(s): 2/23/2012 - 5/6/2012															
Rodriguez, Mario	4/30/2013	4/30/2016	X	X		X										
	Gap Date(s): 1/1/2011 - 4/29/2013															
Rogers, Anthony	1/10/2008	1/10/2011	X													
	Gap Date(s): 1/10/2011 - 11/7/2014															
Rollins, Geoffrey	3/10/2009	3/10/2012	X													
	Gap Date(s): 3/10/2012 - 11/7/2014															
Satterfield, Josiah	5/23/2012	5/23/2015	X	X												
	Gap Date(s): 1/1/2011 - 5/22/2012															
Sheehan, Douglas	7/21/2009	7/21/2012	X													
	6/25/2012	6/25/2015	X													
	Gap Date(s): None															



APPENDIX B

Officer Name	Issue Date	Expiration Date	A	B	C	D	E	F	G	H	I	J	K	L	M	N
Shelton, Benjamin	3/26/2010	3/26/2013	X													
	2/21/2013	2/21/2016		X												
	Gap Date(s): None															
Shope, Richard	7/8/2014	7/8/2017	X	X												
	Gap Date(s): 1/1/2011 - 7/7/2014															
Simpson, Daniel	5/29/2012	5/29/2015	X	X												
	Gap Date(s): 1/1/2011 - 5/28/2012															
Simpson, Joshua	3/24/2008	3/24/2011	X		X											
	3/21/2011	3/21/2014	X			X										
	Gap Date(s): 3/21/2014 - 11/7/2014															
Skonieczny, Kevin	9/18/2008	9/18/2011	X		X											
	10/19/2011	5/16/2014	X			X										
	Gap Date(s): 9/18/2011 - 10/18/2011; 5/16/2014 - 11/7/2014															
Sorrells, Joseph	5/19/2008	5/19/2011	X		X											
	Gap Date(s): 5/19/2011 - 11/7/2014															
Stepp, Jacquelyn	2/23/2009	2/23/2012	X									X				
	4/2/2012	4/2/2015	X	X												
	Gap Date(s): 2/23/2012 - 4/1/2012															
Stewart, Eric	10/3/2014	10/3/2017		X												
	Gap Date(s): 1/1/2011 - 10/2/2014															
Stover, James	2/23/2009	2/23/2012	X		X											
	1/30/2012	1/30/2015	X	X												
	Gap Date(s): None															
Summerow, Amber	10/13/2011	10/13/2014	X													
	Gap Date(s): 1/1/2011 - 10/12/2011; 10/13/2014 - 11/7/2014															
Summey, Elliot	3/24/2008	3/24/2011	X		X											
	5/27/2011	5/27/2014	X			X	X									
	Gap Date(s): 3/24/2011 - 5/26/2011; 5/27/2014 - 11/7/2014															
Taube, Lisa	2/23/2009	2/23/2012	X		X											
	2/23/2012	2/23/2015	X	X												
	Gap Date(s): None															
Thomas, Brett	5/21/2013	5/21/2016	X	X		X										
	Gap Date(s): 1/1/2011 - 5/20/2013															
Tomasetti, Louis	2/1/2010	2/1/2013	X													
	1/28/2013	1/28/2016	X													
	Gap Date(s): None															
Torgow, Leslie	2/21/2013	2/21/2016	X													
	Gap Date(s): 1/1/2011 - 2/20/2013															
Turner, Jennifer	5/19/2008	5/19/2011	X		X											
	Gap Date(s): 5/19/2011 - 11/7/2014															
Ward, Rayleon	6/4/2012	6/4/2015	X	X												
	Gap Date(s): 1/1/2011 - 6/3/2012															
Ward, Shaun	2/23/2009	2/23/2012	X													
	11/14/2012	11/14/2015	X													
	Gap Date(s): 2/23/2012 - 11/13/2012															



Officer Name	Issue Date	Expiration Date	A	B	C	D	E	F	G	H	I	J	K	L	M	N
Weaver, Thomas	5/24/2010	5/24/2013	X													
	1/15/2014	1/15/2017	X	X												
	Gap Date(s): 5/24/2013 - 1/14/2014															
Welborn, Jonathan	10/10/2014	10/10/2017	X	X												
	Gap Date(s): 1/1/2011 - 10/9/2014															
Wilson, Lynn	5/19/2008	5/19/2011	X													
	Gap Date(s): 5/19/2011 - 11/7/2014															
Wilson, Martin	6/30/2008	6/30/2011	X									X				
	Gap Date(s): 6/30/2011 - 11/7/2014															
Wohleben, Matthew	3/24/2008	3/24/2011	X		X											
	10/19/2011	10/19/2014	X													
	Gap Date(s): 3/24/2011 - 10/18/2011; 10/19/2014 - 11/7/2014															
Woody, Jeremy Scott	12/14/2012	12/14/2015	X													
	Gap Date(s): 1/1/2011 - 12/13/2012															
Woollam, Jeffrey	10/20/2008	10/20/2011	X		X											
	10/19/2011	10/19/2014	X													
	Gap Date(s): 10/19/2014 - 11/7/2014															
Yelton, William	2/1/2010	2/1/2013	X													
	1/28/2013	1/28/2016	X			X										
	Gap Date(s): None															
Zeigler, John	11/3/2008	11/3/2011	X		X											
	10/19/2011	10/19/2014	X													
	1/5/2015	1/5/2018		X					X							
	Gap Date(s): 10/19/2014 - 11/7/2014															

Documentation of gaps in operator certification does not indicate that all officers identified as having gaps between certifications operated speed measuring equipment during the periods when their operator certifications were expired.



Citations issued by an officer without proper operator certification for the SMI used at the time of the citation:

Year ended December 31, 2011 - 21 Citations
 Year ended December 31, 2012 - 11 Citations
 Year ended December 31, 2013 - 6 Citations
Year ended December 31, 2014 - 16 Citations
 Total - 54 Citations

2011			
Date	Citation	Issuing Officer	Witness Officer
1/2/2011	TC171998* Control #: C13530653	AUSTIN, J R	
1/2/2011	TC172000* Control #: C13530661	AUSTIN, J R	
1/2/2011	TC172001* Control #: C1353067X	AUSTIN, J R	
1/26/2011	34521E0	BINGAMAN, R A	
2/5/2011	34521E5	BINGAMAN, R A	
2/14/2011	9415E20	BINGAMAN, R A	
2/14/2011	9415E21	BINGAMAN, R A	
2/19/2011	9415E26	BINGAMAN, R A	
2/28/2011	9415E31	BINGAMAN, R A	
3/1/2011	70534E4	BINGAMAN, R A	
3/2/2011	70534E6	BINGAMAN, R A	
3/2/2011	70534E7	BINGAMAN, R A	
3/2/2011	70534E8	BINGAMAN, R A	
3/2/2011	70534E9	BINGAMAN, R A	
3/9/2011	70535E6	BINGAMAN, R A	
12/17/2011	TC 182758* Control #: C17742515!	BUTTERFIELD, B A	
12/20/2011	TC182757* Control #: C17742531	BUTTERFIELD, B A	
12/20/2011	TC182753* Control*: C1774254X	BUTTERFIELD, B A	
1/2/2011	46512E1	CARSWELL, W L	
7/3/2011	200826E	LOVELACE, L L	ALLEN, M J
3/16/2011	6053E19	SIMPSON, J L	

2012			
Date	Citation	Issuing Officer	Witness Officer
10/25/2012	924440E	BROOKS, S M	
10/25/2012	924441E	BROOKS, S M	
11/3/2012	924443E	BROOKS, S M	
8/20/2012	TC189850* Control #: C18307901	BURGE, O W	
1/4/2012	TC183311* Control it: C177 42 671	BUTTERFIELD, B A	
1/4/2012	TC 183308* Control #: C17742663	BUTTERFIELD, B A	
6/18/2012	TC187911* Control #: C1957 9387	CRAIG, M R	
6/18/2012	TC187896* Control #: C19579395	CRAIG, M R	
1/5/2012	TC 183396* Control #: C04109619	GREEN, A G	
2/6/2012	554462E	MOORE, B R	
6/25/2012	554469E	MOORE, B R	



2013			
Date	Citation	Issuing Officer	Witness Officer
6/1/2013	TC196066* Control #: C1929966X	DAVIDSON, A B	
9/11/2013	6F14641	HUNTER, E	
9/17/2013	6F14642	HUNTER, E	
6/16/2013	01F3528	HUNTER, J B	
12/25/2013	21F7856	MESSER, K E	
10/15/2013	52F0639	PARKER, S K	BRYSON, T

2014			
Date	Citation	Issuing Officer	Witness Officer
7/17/2014	661F986	BEARD, R T	DUYCK, T G
7/17/2014	661F987	BEARD, R T	DUYCK, T G
7/25/2014	610F815	DUYCK, T G	
7/25/2014	610F816	DUYCK, T G	
7/25/2014	610F817	DUYCK, T G	
7/25/2014	610F818	DUYCK, T G	
7/25/2014	610F819	DUYCK, T G	
7/25/2014	610F820	DUYCK, T G	
8/9/2014	597F803	LANNING, R B	DUYCK, T G
8/9/2014	597F804	LANNING, R B	DUYCK, T G
8/10/2014	597F805	LANNING, R B	DUYCK, T G
8/10/2014	597F806	LANNING, R B	DUYCK, T G
8/10/2014	597F807	LANNING, R B	DUYCK, T G
4/17/2014	258F137	VERIDAL, J D	LACKEY, M K
1/1/2014	81F6644	WELBORN, J H	MCCAIN, J P
2/19/2014	81F6648	WELBORN, J H	

Signed statements have been received by many officers on this list stating that they were working in tandem with another officer who was properly certified for SMI operation when the citation was issued. Further, the certified officer operated the SMI and the issuing officer wrote the citation. These statements were received subsequent to testing procedures, and are not reflected in the above results.



Citations issued using an SMI that was without proper calibration certification at the time of the citation:

Year ended December 31, 2011 - 29 Citations
 Year ended December 31, 2012 - 181 Citations
 Year ended December 31, 2013 - 0 Citations
Year ended December 31, 2014 - 272 Citations
 Total - 482 Citations

2011			
Date	Citation	Issuing Officer	Witness Officer
11/19/2011	TC181529* Control #: C17724428	ALLEN, M J	
11/19/2011	TC181528* Control #: C17724444	ALLEN, M J	
11/20/2011	11-032039	ALLEN, M J	
11/24/2011	11-032379	ALLEN, M J	
3/29/2011	9541E41	BINGAMAN, R A	
3/29/2011	9541E43	BINGAMAN, R A	
3/29/2011	9541E44	BINGAMAN, R A	
7/2/2011	9541E45	BINGAMAN, R A	
4/11/2011	78188E8	BROOKS, S M	
7/14/2011	092538E	JONES, T J	
7/18/2011	092539E	JONES, T J	
7/18/2011	092540E	JONES, T J	
7/18/2011	291250E	JONES, T J	
2/22/2011	19680E2	MOORE, B R	
7/15/2011	73581E6	STEPP, J S	
8/10/2011	299741E	STEPP, J S	
8/10/2011	299742E	STEPP, J S	
8/10/2011	299743E	STEPP, J S	
8/10/2011	299744E	STEPP, J S	
8/10/2011	299745E	STEPP, J S	
8/10/2011	299746E	STEPP, J S	
8/11/2011	299747E	STEPP, J S	
8/11/2011	299748E	STEPP, J S	
8/18/2011	299749E	STEPP, J S	
8/24/2011	299750E	STEPP, J S	
8/24/2011	299751E	STEPP, J S	
8/24/2011	299752E	STEPP, J S	
8/24/2011	299753E	STEPP, J S	
10/4/2011	73582E0	STEPP, J S	

2012			
Date	Citation	Issuing Officer	Witness Officer
10/15/2012	OF48369	ALLEN, M J	
10/15/2012	OF48370	ALLEN, M J	
10/15/2012	OF48371	ALLEN, M J	
10/15/2012	OF48372	ALLEN, M J	
10/15/2012	OF48373	ALLEN, M J	
10/15/2012	OF48374	ALLEN, M J	



2012 - continued			
Date	Citation	Issuing Officer	Witness Officer
10/15/2012	OF48375	ALLEN, M J	
10/15/2012	OF48376	ALLEN, M J	
10/15/2012	OF48377	ALLEN, M J	
10/15/2012	OF48378	ALLEN, M J	
10/16/2012	OF48379	ALLEN, M J	
10/16/2012	OF48380	ALLEN, M J	
10/16/2012	OF48381	ALLEN, M J	
10/16/2012	OF48382	ALLEN, M J	
10/16/2012	OF48383	ALLEN, M J	
10/16/2012	OF48384	ALLEN, M J	
10/16/2012	OF48385	ALLEN, M J	
10/16/2012	OF48386	ALLEN, M J	
10/16/2012	OF48387	ALLEN, M J	
10/16/2012	OF48388	ALLEN, M J	
10/16/2012	OF67584	ALLEN, M J	
10/19/2012	OF67585	ALLEN, M J	
10/19/2012	OF67586	ALLEN, M J	
10/19/2012	OF67588	ALLEN, M J	
10/19/2012	OF67590	ALLEN, M J	
10/19/2012	OF67591	ALLEN, M J	
10/19/2012	OF67592	ALLEN, M J	
10/20/2012	OF67593	ALLEN, M J	
2/10/2012	TC184642* Control #: C1929738	BINGAMAN, R A	
3/6/2012	TC185163* Control #: C19297594	BINGAMAN, R A	
3/7/2012	TC185164* Control #: q19297624	BINGAMAN, R A	
3/19/2012	TC 185464* Control #: C19297748	BINGAMAN, R A	
3/19/2012	TC185463* Control #: C19297756	BINGAMAN, R A	
3/19/2012	TC185462* Control #: C18305011	BINGAMAN, R A	
3/19/2012	TC185466* Control #: C1830502X	BINGAMAN, R A	
3/19/2012	TC185461* Control It: C18305038	BINGAMAN, R A	
3/22/2012	TC185573* Control #: C18305070	BINGAMAN, R A	
3/22/2012	TC 185567* Control #: C18305089	BINGAMAN, R A	
4/30/2012	TC186602* Control #: C18305240	BINGAMAN, R A	
4/30/2012	TC186601* Control #: C18305232	BINGAMAN, R A	
4/30/2012	TC186603* Control #: C18305259	BINGAMAN, R A	
5/14/2012	9813E09	BINGAMAN, R A	
5/23/2012	9813E14	BINGAMAN, R A	
5/23/2012	9813E15	BINGAMAN, R A	
5/23/2012	9813E16	BINGAMAN, R A	
5/31/2012	9813E21	BINGAMAN, R A	
5/31/2012	9813E22	BINGAMAN, R A	
6/7/2012	9813E23	BINGAMAN, R A	
6/19/2012	9813E26	BINGAMAN, R A	
6/19/2012	9813E27	BINGAMAN, R A	
6/25/2012	F610868	BINGAMAN, R A	
6/27/2012	F610872	BINGAMAN, R A	
7/31/2012	F610883	BINGAMAN, R A	



2012 - continued			
Date	Citation	Issuing Officer	Witness Officer
7/31/2012	F610884	BINGAMAN, R A	
8/6/2012	F610888	BINGAMAN, R A	
8/16/2012	F779775	BINGAMAN, R A	
8/20/2012	F779778	BINGAMAN, R A	
8/21/2012	F779781	BINGAMAN, R A	
8/22/2012	F779785	BINGAMAN, R A	
8/27/2012	F779787	BINGAMAN, R A	
8/27/2012	F779788	BINGAMAN, R A	
8/27/2012	F779789	BINGAMAN, R A	
9/26/2012	F972359	BINGAMAN, R A	
9/26/2012	F972360	BINGAMAN, R A	
10/8/2012	F972370	BINGAMAN, R A	
10/10/2012	F972371	BINGAMAN, R A	
10/10/2012	F972372	BINGAMAN, R A	
10/15/2012	F972373	BINGAMAN, R A	
7/28/2012	F750448	BRUCHON, D V	
7/29/2012	F750450	BRUCHON, D V	
7/30/2012	F593128	CREASMAN, K W	
7/30/2012	F593129	CREASMAN, K W	
6/13/2012	F499128	DERRICK, J R	
6/13/2012	F499129	DERRICK, J R	
6/13/2012	F499130	DERRICK, J R	
6/15/2012	F499134	DERRICK, J R	
7/6/2012	F499137	DERRICK, J R	
7/6/2012	F499138	DERRICK, J R	
7/6/2012	F499139	DERRICK, J R	
7/6/2012	F499140	DERRICK, J R	
7/6/2012	F499141	DERRICK, J R	
7/6/2012	F499142	DERRICK, J R	
7/18/2012	F683327	DERRICK, J R	
7/20/2012	F683329	DERRICK, J R	
7/20/2012	F683330	DERRICK, J R	
7/20/2012	F683331	DERRICK, J R	
7/26/2012	F683336	DERRICK, J R	
8/15/2012	F683344	DERRICK, J R	
8/17/2012	F781006	DERRICK, J R	
9/11/2012	F781009	DERRICK, J R	
9/13/2012	F781016	DERRICK, J R	
9/26/2012	F781019	DERRICK, J R	
9/26/2012	F781020	DERRICK, J R	
9/26/2012	F781021	DERRICK, J R	
9/27/2012	F781022	DERRICK, J R	
11/29/2012	1F55908	DERRICK, J R	
11/29/2012	1F55909	DERRICK, J R	
11/29/2012	1F55910	DERRICK, J R	
6/19/2012	F470874	DONAHUE, M A	
6/19/2012	F470875	DONAHUE, M A	



2012 - continued			
Date	Citation	Issuing Officer	Witness Officer
6/19/2012	F470876	DONAHUE, M A	
6/19/2012	F470877	DONAHUE, M A	
6/19/2012	F470878	DONAHUE, M A	
6/21/2012	F470879	DONAHUE, M A	
6/21/2012	F470880	DONAHUE, M A	
7/20/2012	F611128	DONAHUE, M A	
7/22/2012	F611132	DONAHUE, M A	
7/25/2012	F611136	DONAHUE, M A	
8/17/2012	F611140	DONAHUE, M A	
8/17/2012	F611141	DONAHUE, M A	
8/17/2012	F611142	DONAHUE, M A	
8/21/2012	F611144	DONAHUE, M A	
8/23/2012	F842683	DONAHUE, M A	
8/24/2012	F842687	DONAHUE, M A	
8/30/2012	F842691	DONAHUE, M A	
8/30/2012	F842692	DONAHUE, M A	
9/14/2012	F842696	DONAHUE, M A	
9/14/2012	F842697	DONAHUE, M A	
9/14/2012	F842698	DONAHUE, M A	
9/14/2012	F842699	DONAHUE, M A	
9/14/2012	F842700	DONAHUE, M A	
10/4/2012	F842707	DONAHUE, M A	
11/29/2012	OF21818	DONAHUE, M A	
11/29/2012	OF21819	DONAHUE, M A	
11/29/2012	OF21820	DONAHUE, M A	
12/4/2012	2F31728	DONAHUE, M A	
12/4/2012	2F31729	DONAHUE, M A	
6/19/2012	F296987	FOWLER, A M	
6/21/2012	F296989	FOWLER, A M	
7/23/2012	F625748	FOWLER, A M	
7/23/2012	F625749	FOWLER, A M	
7/23/2012	F625750	FOWLER, A M	
7/31/2012	F625757	FOWLER, A M	
8/1/2012	F625759	FOWLER, A M	
8/13/2012	F780826	FOWLER, A M	
8/13/2012	F780827	FOWLER, A M	
8/20/2012	F780831	FOWLER, A M	
8/20/2012	F780832	FOWLER, A M	
8/20/2012	F780833	FOWLER, A M	
8/22/2012	F780837	FOWLER, A M	
8/22/2012	F780838	FOWLER, A M	
8/22/2012	F780839	FOWLER, A M	
8/28/2012	F861056	FOWLER, A M	
8/29/2012	F861059	FOWLER, A M	
8/29/2012	F861060	FOWLER, A M	
8/29/2012	F861061	FOWLER, A M	
10/3/2012	OF15222	FOWLER, A M	



APPENDIX D

2012 - continued			
Date	Citation	Issuing Officer	Witness Officer
10/3/2012	OF15223	FOWLER, A M	
10/3/2012	F861078	FOWLER, A M	
10/3/2012	F861079	FOWLER, A M	
6/20/2012	F528270	FRY, C S	
6/21/2012	F528275	FRY, C S	
6/21/2012	F528276	FRY, C S	
6/21/2012	F528277	FRY, C S	
6/21/2012	F528278	FRY, C S	
6/26/2012	F619267	FRY, C S	
6/26/2012	F619268	FRY, C S	
7/16/2012	F619271	FRY, C S	
7/16/2012	F619273	FRY, C S	
8/9/2012	F619284	FRY, C S	
9/11/2012	F829326	FRY, C S	
9/13/2012	F829330	FRY, C S	
9/20/2012	F829334	FRY, C S	
7/27/2012	12-021006	GREEN, A G	
7/29/2012	F616837	GREEN, A G	
7/29/2012	F616838	GREEN, A G	
7/27/2012	F545486	MCCLANAHAN, M E	
7/27/2012	F370493	MCCULLOCH, K B	
3/19/2012	F066034	MEINDL, J D	
7/22/2012	F592017	SIMPSON, D G	
7/22/2012	F592018	SIMPSON, D G	
7/22/2012	F592019	SIMPSON, D G	
7/30/2012	F592020	SIMPSON, D G	
7/30/2012	F592021	SIMPSON, D G	
7/30/2012	F746875	SIMPSON, D G	
7/30/2012	12-021331	SIMPSON, D G	
2/15/2012	332871E	STOVER, J M	
2/15/2012	82810E9	STOVER, J M	
2/5/2012	97040E7	WEAVER, T K	
2/18/2012	97041E3	WEAVER, T K	
11/30/2012	TC192276* Control #: C20881593	WOHLEBEN, M D	

2014			
Date	Citation	Issuing Officer	Witness Officer
7/16/2014	661F984	BEARD, R T	DUYCK, T G
7/22/2014	661F989	BEARD, R T	
8/22/2014	661F990	BEARD, R T	DUYCK, T G
9/24/2014	453F885	BRIGMAN, T J	
9/24/2014	453F886	BRIGMAN, T J	
9/24/2014	453F887	BRIGMAN, T J	
10/1/2014	948F925	BRIGMAN, T J	
10/2/2014	948F929	BRIGMAN, T J	
1/8/2014	79F7658	CABE, A R	
1/9/2014	79F7661	CABE, A R	



2014 - continued			
Date	Citation	Issuing Officer	Witness Officer
1/9/2014	79F7662	CABE, A R	
1/9/2014	79F7663	CABE, A R	
1/9/2014	79F7664	CABE, A R	
1/19/2014	86F1029	CABE, A R	
1/19/2014	86F1030	CABE, A R	
1/19/2014	86F1031	CABE, A R	
1/19/2014	86F1032	CABE, A R	
1/20/2014	86F1033	CABE, A R	
1/27/2014	86F1034	CABE, A R	
1/27/2014	86F1035	CABE, A R	
1/27/2014	86F1036	CABE, A R	
1/31/2014	86F1037	CABE, A R	
1/31/2014	86F1038	CABE, A R	
1/31/2014	86F1039	CABE, A R	
1/31/2014	86F1040	CABE, A R	
1/31/2014	86F1041	CABE, A R	
2/1/2014	86F1043	CABE, A R	
2/1/2014	86F1044	CABE, A R	
2/2/2014	86F1045	CABE, A R	
2/2/2014	86F1046	CABE, A R	
2/2/2014	86F1047	CABE, A R	
2/11/2014	86F1049	CABE, A R	
2/11/2014	14-003090	CABE, A R	
2/14/2014	95F4922	CABE, A R	
2/20/2014	95F4926	CABE, A R	
2/20/2014	95F4927	CABE, A R	
2/20/2014	95F4928	CABE, A R	
2/25/2014	95F4930	CABE, A R	
2/28/2014	95F4932	CABE, A R	
2/28/2014	95F4933	CABE, A R	
2/28/2014	95F4934	CABE, A R	
2/28/2014	95F4935	CABE, A R	
3/1/2014	95F4937	CABE, A R	
3/1/2014	95F4942	CABE, A R	
3/1/2014	95F4943	CABE, A R	
3/2/2014	95F4945	CABE, A R	
3/14/2014	063F490	CABE, A R	
3/14/2014	063F491	CABE, A R	
3/14/2014	063F492	CABE, A R	
3/16/2014	063F494	CABE, A R	
7/17/2014	518F470	CLOER, R K	
1/13/2014	66F3960	COHEN, D T	
1/19/2014	66F3963	COHEN, D T	
2/15/2014	66F3969	COHEN, D T	
2/24/2014	002F332	COHEN, D T	
2/24/2014	002F333	COHEN, D T	
3/1/2014	002F336	COHEN, D T	



2014 - continued			
Date	Citation	Issuing Officer	Witness Officer
3/1/2014	002F337	COHEN, D T	
3/1/2014	002F338	COHEN, D T	
2/20/2014	14-003682	CRAIG, M R	CABE, A R
7/25/2014	610F811	DUYCK, T G	
7/25/2014	610F812	DUYCK, T G	
7/25/2014	610F821	DUYCK, T G	
7/26/2014	610F822	DUYCK, T G	
7/26/2014	610F823	DUYCK, T G	
7/26/2014	610F824	DUYCK, T G	
7/26/2014	610F825	DUYCK, T G	
7/26/2014	610F826	DUYCK, T G	
7/26/2014	610F827	DUYCK, T G	
7/26/2014	610F828	DUYCK, T G	
7/26/2014	610F829	DUYCK, T G	
7/26/2014	610F831	DUYCK, T G	
7/26/2014	610F832	DUYCK, T G	
7/26/2014	610F833	DUYCK, T G	
7/27/2014	610F834	DUYCK, T G	
7/27/2014	703F751	DUYCK, T G	
7/27/2014	703F752	DUYCK, T G	
7/27/2014	703F753	DUYCK, T G	
7/27/2014	703F754	DUYCK, T G	
7/27/2014	703F755	DUYCK, T G	
7/27/2014	703F757	DUYCK, T G	
7/27/2014	703F758	DUYCK, T G	
7/27/2014	703F759	DUYCK, T G	
7/27/2014	703F760	DUYCK, T G	
7/30/2014	703F761	DUYCK, T G	
7/30/2014	703F762	DUYCK, T G	
7/30/2014	703F763	DUYCK, T G	
7/30/2014	703F764	DUYCK, T G	
7/30/2014	703F765	DUYCK, T G	
7/30/2014	703F767	DUYCK, T G	
7/30/2014	703F768	DUYCK, T G	
8/5/2014	703F773	DUYCK, T G	
8/5/2014	703F775	DUYCK, T G	
8/18/2014	742F714	DUYCK, T G	
8/18/2014	742F715	DUYCK, T G	
8/18/2014	742F716	DUYCK, T G	
8/18/2014	742F717	DUYCK, T G	
8/18/2014	742F718	DUYCK, T G	
8/18/2014	742F719	DUYCK, T G	
8/18/2014	742F720	DUYCK, T G	
8/18/2014	742F722	DUYCK, T G	
8/19/2014	742F723	DUYCK, T G	
8/19/2014	742F724	DUYCK, T G	
8/19/2014	742F725	DUYCK, T G	



2014 - continued			
Date	Citation	Issuing Officer	Witness Officer
8/19/2014	742F726	DUYCK, T G	
8/19/2014	742F727	DUYCK, T G	
8/19/2014	742F728	DUYCK, T G	
8/19/2014	742F729	DUYCK, T G	
8/19/2014	742F730	DUYCK, T G	
8/19/2014	742F732	DUYCK, T G	
8/19/2014	742F733	DUYCK, T G	
8/24/2014	742F734	DUYCK, T G	
8/24/2014	742F735	DUYCK, T G	
8/24/2014	742F736	DUYCK, T G	
8/24/2014	742F737	DUYCK, T G	
8/24/2014	799F008	DUYCK, T G	
8/24/2014	799F009	DUYCK, T G	
8/24/2014	799F010	DUYCK, T G	
8/24/2014	799F011	DUYCK, T G	
8/24/2014	799F012	DUYCK, T G	
8/24/2014	799F013	DUYCK, T G	
8/24/2014	799F015	DUYCK, T G	
8/28/2014	799F017	DUYCK, T G	
8/28/2014	799F019	DUYCK, T G	
8/28/2014	799F020	DUYCK, T G	
8/28/2014	799F022	DUYCK, T G	
9/1/2014	799F026	DUYCK, T G	
9/1/2014	799F027	DUYCK, T G	
9/1/2014	799F028	DUYCK, T G	
9/1/2014	799F029	DUYCK, T G	
9/1/2014	799F030	DUYCK, T G	
9/1/2014	799F031	DUYCK, T G	
9/1/2014	799F032	DUYCK, T G	
9/1/2014	856F341	DUYCK, T G	
9/1/2014	856F342	DUYCK, T G	
9/2/2014	856F343	DUYCK, T G	
9/2/2014	856F344	DUYCK, T G	
9/2/2014	856F345	DUYCK, T G	
9/2/2014	856F346	DUYCK, T G	
9/2/2014	856F347	DUYCK, T G	
9/2/2014	856F348	DUYCK, T G	
9/2/2014	856F349	DUYCK, T G	
9/2/2014	856F350	DUYCK, T G	
9/2/2014	856F351	DUYCK, T G	
9/2/2014	856F352	DUYCK, T G	
9/5/2014	856F355	DUYCK, T G	
9/5/2014	856F356	DUYCK, T G	
9/5/2014	856F357	DUYCK, T G	
9/5/2014	856F358	DUYCK, T G	
9/5/2014	856F359	DUYCK, T G	
9/5/2014	856F360	DUYCK, T G	



2014 - continued			
Date	Citation	Issuing Officer	Witness Officer
9/5/2014	856F361	DUYCK, T G	
9/5/2014	856F362	DUYCK, T G	
9/5/2014	856F363	DUYCK, T G	
9/5/2014	856F364	DUYCK, T G	
9/6/2014	856F365	DUYCK, T G	
9/10/2014	876F524	DUYCK, T G	
9/10/2014	876F525	DUYCK, T G	
9/10/2014	876F526	DUYCK, T G	
9/10/2014	876F527	DUYCK, T G	
9/10/2014	876F528	DUYCK, T G	
9/10/2014	876F529	DUYCK, T G	
9/10/2014	876F530	DUYCK, T G	
9/11/2014	876F531	DUYCK, T G	
9/11/2014	876F532	DUYCK, T G	
9/11/2014	876F533	DUYCK, T G	
9/11/2014	876F535	DUYCK, T G	
9/11/2014	876F534	DUYCK, T G	
9/15/2014	876F537	DUYCK, T G	
9/15/2014	876F538	DUYCK, T G	
9/15/2014	876F539	DUYCK, T G	
9/15/2014	876F540	DUYCK, T G	
9/15/2014	876F541	DUYCK, T G	
9/15/2014	876F542	DUYCK, T G	
9/15/2014	876F543	DUYCK, T G	
9/15/2014	876F544	DUYCK, T G	
9/15/2014	876F545	DUYCK, T G	
9/15/2014	876F546	DUYCK, T G	
9/15/2014	876F547	DUYCK, T G	
7/20/2014	351F100	HARALSON, T R	
7/20/2014	351F101	HARALSON, T R	
8/9/2014	597F801	LANNING, R B	
8/9/2014	597F802	LANNING, R B	
8/10/2014	597F808	LANNING, R B	
8/10/2014	597F809	LANNING, R B	
8/10/2014	597F810	LANNING, R B	
8/10/2014	597F811	LANNING, R B	
8/10/2014	597F812	LANNING, R B	
8/10/2014	597F813	LANNING, R B	
8/10/2014	597F814	LANNING, R B	
8/26/2014	731F448	MESSER, K E	
6/29/2014	484F053	METCALF, M C	CLOER, R K
8/29/2014	411F285	METCALF, M C	DENNIS, C N
1/11/2014	81F0122	MORROW, C M	
1/11/2014	81F0123	MORROW, C M	
1/12/2014	81F0124	MORROW, C M	
1/13/2014	81F0127	MORROW, C M	
1/15/2014	81F0128	MORROW, C M	



2014 - continued			
Date	Citation	Issuing Officer	Witness Officer
1/15/2014	81F0130	MORROW, C M	
1/15/2014	81F0131	MORROW, C M	
1/25/2014	81F0135	MORROW, C M	
1/25/2014	81F0136	MORROW, C M	
1/25/2014	81F0138	MORROW, C M	
1/26/2014	81F0141	MORROW, C M	
1/26/2014	92F3319	MORROW, C M	
2/3/2014	92F3323	MORROW, C M	
2/4/2014	92F3324	MORROW, C M	
2/7/2014	92F3327	MORROW, C M	
2/7/2014	92F3328	MORROW, C M	
2/15/2014	92F3334	MORROW, C M	
2/16/2014	92F3335	MORROW, C M	
2/16/2014	92F3336	MORROW, C M	
2/16/2014	92F3337	MORROW, C M	
2/16/2014	92F3338	MORROW, C M	
2/16/2014	92F3339	MORROW, C M	
2/20/2014	92F3342	MORROW, C M	
2/28/2014	005F868	MORROW, C M	
9/27/2014	888F758	MORROW, C M	
9/27/2014	888F759	MORROW, C M	
9/27/2014	888F760	MORROW, C M	
9/28/2014	888F761	MORROW, C M	
9/28/2014	888F762	MORROW, C M	
9/28/2014	888F763	MORROW, C M	
9/28/2014	888F765	MORROW, C M	
9/28/2014	888F766	MORROW, C M	
10/2/2014	888F768	MORROW, C M	
10/2/2014	14-022953	MORROW, C M	
8/26/2014	TC203535* Control #: C26736161	ONDERDONK, D R	
8/15/2014	766F057	OVERBEY, M D	
8/17/2014	766F062	OVERBEY, M D	
8/17/2014	766F063	OVERBEY, M D	
8/21/2014	766F067	OVERBEY, M D	
8/21/2014	766F068	OVERBEY, M D	
8/25/2014	766F070	OVERBEY, M D	
7/13/2014	501F235	PARKER, S K	
7/13/2014	501F237	PARKER, S K	
7/13/2014	501F238	PARKER, S K	
8/14/2014	501F250	PARKER, S K	
8/23/2014	758F179	PARKER, S K	
8/26/2014	758F184	PARKER, S K	
8/30/2014	758F193	PARKER, S K	
8/31/2014	847F913	PARKER, S K	
8/31/2014	847F915	PARKER, S K	
8/31/2014	847F917	PARKER, S K	
8/31/2014	847F918	PARKER, S K	



2014 - continued			
Date	Citation	Issuing Officer	Witness Officer
2/7/2014	94F0895	SHELTON, B L	
2/8/2014	94F0896	SHELTON, B L	
2/8/2014	94F0897	SHELTON, B L	
2/8/2014	94F0899	SHELTON, B L	
2/22/2014	94F0902	SHELTON, B L	
2/23/2014	94F0903	SHELTON, B L	
2/26/2014	94F0905	SHELTON, B L	
8/18/2014	302F566	SHOPE, R B	DUYCK, T G
8/18/2014	302F567	SHOPE, R B	DUYCK, T G
8/19/2014	794F369	SHOPE, R B	DUYCK, T G
8/19/2014	794F370	SHOPE, R B	DUYCK, T G
8/24/2014	794F372	SHOPE, R B	DUYCK, T G
8/24/2014	794F373	SHOPE, R B	DUYCK, T G
8/24/2014	794F374	SHOPE, R B	DUYCK, T G
9/1/2014	794F376	SHOPE, R B	DUYCK, T G
9/2/2014	794F377	SHOPE, R B	DUYCK, T G
9/2/2014	794F379	SHOPE, R B	DUYCK, T G
9/2/2014	794F380	SHOPE, R B	DUYCK, T G
9/10/2014	794F383	SHOPE, R B	DUYCK, T G
9/10/2014	794F384	SHOPE, R B	DUYCK, T G
9/15/2014	794F385	SHOPE, R B	DUYCK, T G
9/15/2014	794F386	SHOPE, R B	DUYCK, T G
7/29/2014	TC203089* Ccintrol #: C21757349	STOVER, J M	
1/19/2014	89F6693	WARD, R	
1/20/2014	89F6694	WARD, R	
2/19/2014	81F6649	WELBORN, J H	CABE, A R
2/19/2014	81F6650	WELBORN, J H	CABE, A R



Citations for which we cannot definitively link an officer to the vehicle they were driving at the time of the citation, and therefore, cannot identify the SMI the officer used to issue the citation:

Year ended December 31, 2011 - 3 Citations
 Year ended December 31, 2012 - 218 Citations
 Year ended December 31, 2013 - 33 Citations
Year ended December 31, 2014 - 12 Citations
 Total - 266 Citations

2011			
Date	Citation	Issuing Officer	Witness Officer
4/8/2011	TC175032* Control#: C11383173	BROWN, J D	
2/11/2011	TC173125* Control #: C59521985	DAVIDSON, A B	
5/24/2011	007387E	GRECO, C L	

2012			
Date	Citation	Issuing Officer	Witness Officer
9/7/2012	TC190559* Control #: C1830 628X	ALLEN, M J	
2/17/2012	F064725	ANDERSON, B J	
2/17/2012	F064726	ANDERSON, B J	
2/17/2012	F064727	ANDERSON, B J	
2/18/2012	F064728	ANDERSON, B J	
2/18/2012	F064729	ANDERSON, B J	
2/19/2012	F064731	ANDERSON, B J	
2/19/2012	F064732	ANDERSON, B J	
2/19/2012	F064733	ANDERSON, B J	
2/19/2012	F064734	ANDERSON, B J	
2/19/2012	F064735	ANDERSON, B J	
2/19/2012	F124808	ANDERSON, B J	
2/27/2012	F124810	ANDERSON, B J	
2/27/2012	F124811	ANDERSON, B J	
2/28/2012	F124812	ANDERSON, B J	
3/4/2012	F124813	ANDERSON, B J	
3/4/2012	F124814	ANDERSON, B J	
3/4/2012	F124815	ANDERSON, B J	
3/4/2012	F124816	ANDERSON, B J	
3/4/2012	F124817	ANDERSON, B J	
3/8/2012	F124818	ANDERSON, B J	
3/8/2012	F124819	ANDERSON, B J	
3/8/2012	F124820	ANDERSON, B J	
3/8/2012	F124821	ANDERSON, B J	
3/12/2012	F124823	ANDERSON, B J	
3/12/2012	F124824	ANDERSON, B J	
3/12/2012	F124825	ANDERSON, B J	
3/12/2012	F124826	ANDERSON, B J	
3/12/2012	F124827	ANDERSON, B J	
3/13/2012	F124828	ANDERSON, B J	
3/17/2012	F124829	ANDERSON, B J	



2012 - continued			
Date	Citation	Issuing Officer	Witness Officer
3/17/2012	F124830	ANDERSON, B J	
3/17/2012	F124831	ANDERSON, B J	
3/17/2012	F124832	ANDERSON, B J	
3/18/2012	F230682	ANDERSON, B J	
3/18/2012	F230683	ANDERSON, B J	
3/18/2012	F230685	ANDERSON, B J	
3/21/2012	F230686	ANDERSON, B J	
3/21/2012	F230687	ANDERSON, B J	
3/21/2012	F230689	ANDERSON, B J	
3/22/2012	F230690	ANDERSON, B J	
3/22/2012	F230691	ANDERSON, B J	
3/22/2012	F230692	ANDERSON, B J	
3/27/2012	F230696	ANDERSON, B J	
3/27/2012	F230697	ANDERSON, B J	
3/27/2012	F230699	ANDERSON, B J	
3/30/2012	F230701	ANDERSON, B J	
3/30/2012	F230702	ANDERSON, B J	
4/4/2012	F230706	ANDERSON, B J	
4/4/2012	F282122	ANDERSON, B J	
4/19/2012	F282127	ANDERSON, B J	
4/19/2012	F282128	ANDERSON, B J	
4/23/2012	F282130	ANDERSON, B J	
4/23/2012	F282131	ANDERSON, B J	
4/24/2012	F282132	ANDERSON, B J	
4/24/2012	F282133	ANDERSON, B J	
4/24/2012	F282134	ANDERSON, B J	
4/24/2012	F282135	ANDERSON, B J	
4/28/2012	F282136	ANDERSON, B J	
4/28/2012	F282137	ANDERSON, B J	
4/28/2012	F282138	ANDERSON, B J	
4/28/2012	F282139	ANDERSON, B J	
5/7/2012	F282144	ANDERSON, B J	
5/7/2012	F282146	ANDERSON, B J	
5/7/2012	F416278	ANDERSON, B J	
5/8/2012	F416279	ANDERSON, B J	
5/8/2012	F416280	ANDERSON, B J	
5/8/2012	F416281	ANDERSON, B J	
5/13/2012	F416284	ANDERSON, B J	
5/13/2012	F416285	ANDERSON, B J	
5/13/2012	F416286	ANDERSON, B J	
5/13/2012	F416287	ANDERSON, B J	
5/13/2012	F416288	ANDERSON, B J	
5/16/2012	F416289	ANDERSON, B J	
5/16/2012	F416290	ANDERSON, B J	
5/16/2012	F416291	ANDERSON, B J	
5/21/2012	F416294	ANDERSON, B J	
5/21/2012	F416295	ANDERSON, B J	



2012 - continued			
Date	Citation	Issuing Officer	Witness Officer
5/21/2012	F416296	ANDERSON, B J	
5/21/2012	F416297	ANDERSON, B J	
5/25/2012	F416298	ANDERSON, B J	
5/25/2012	F416299	ANDERSON, B J	
5/25/2012	F416300	ANDERSON, B J	
5/26/2012	F416301	ANDERSON, B J	
5/26/2012	F416302	ANDERSON, B J	
5/26/2012	F488531	ANDERSON, B J	
5/26/2012	F488532	ANDERSON, B J	
5/26/2012	F488533	ANDERSON, B J	
5/27/2012	F488535	ANDERSON, B J	
5/27/2012	F488536	ANDERSON, B J	
5/27/2012	F488537	ANDERSON, B J	
5/27/2012	F488538	ANDERSON, B J	
5/31/2012	F488540	ANDERSON, B J	
5/31/2012	F488541	ANDERSON, B J	
5/31/2012	F488542	ANDERSON, B J	
6/8/2012	F488547	ANDERSON, B J	
6/8/2012	F488548	ANDERSON, B J	
6/8/2012	F488549	ANDERSON, B J	
6/8/2012	F488550	ANDERSON, B J	
6/9/2012	F488551	ANDERSON, B J	
6/9/2012	F488552	ANDERSON, B J	
6/10/2012	F488553	ANDERSON, B J	
6/10/2012	F488554	ANDERSON, B J	
6/10/2012	F488555	ANDERSON, B J	
6/10/2012	F571067	ANDERSON, B J	
6/10/2012	F571068	ANDERSON, B J	
6/10/2012	F571069	ANDERSON, B J	
6/10/2012	F571070	ANDERSON, B J	
7/17/2012	F571076	ANDERSON, B J	
7/21/2012	F571078	ANDERSON, B J	
8/3/2012	F571087	ANDERSON, B J	
8/4/2012	F571090	ANDERSON, B J	
8/4/2012	F571091	ANDERSON, B J	
8/4/2012	F789562	ANDERSON, B J	
8/4/2012	F789563	ANDERSON, B J	
8/5/2012	F789564	ANDERSON, B J	
8/5/2012	F789565	ANDERSON, B J	
8/5/2012	F789566	ANDERSON, B J	
8/14/2012	F789569	ANDERSON, B J	
8/14/2012	F789571	ANDERSON, B J	
8/18/2012	F789572	ANDERSON, B J	
8/18/2012	F789573	ANDERSON, B J	
8/18/2012	F789574	ANDERSON, B J	
8/18/2012	F789575	ANDERSON, B J	
8/19/2012	F789577	ANDERSON, B J	



2012 - continued			
Date	Citation	Issuing Officer	Witness Officer
8/19/2012	F789578	ANDERSON, B J	
8/19/2012	F789579	ANDERSON, B J	
8/19/2012	F789580	ANDERSON, B J	
8/22/2012	F789581	ANDERSON, B J	
8/22/2012	F789582	ANDERSON, B J	
8/22/2012	F789583	ANDERSON, B J	
8/22/2012	F789584	ANDERSON, B J	
8/27/2012	F862952	ANDERSON, B J	
8/27/2012	F862953	ANDERSON, B J	
8/27/2012	F862954	ANDERSON, B J	
8/27/2012	F862955	ANDERSON, B J	
8/27/2012	F862956	ANDERSON, B J	
8/28/2012	F862957	ANDERSON, B J	
8/28/2012	F862958	ANDERSON, B J	
8/28/2012	F862959	ANDERSON, B J	
9/1/2012	F862960	ANDERSON, B J	
9/1/2012	F862961	ANDERSON, B J	
9/1/2012	F862962	ANDERSON, B J	
9/6/2012	F862963	ANDERSON, B J	
9/6/2012	F862964	ANDERSON, B J	
9/6/2012	F862965	ANDERSON, B J	
9/6/2012	F862966	ANDERSON, B J	
9/24/2012	F862967	ANDERSON, B J	
9/24/2012	F862968	ANDERSON, B J	
9/24/2012	F862969	ANDERSON, B J	
9/25/2012	F862970	ANDERSON, B J	
9/25/2012	F862971	ANDERSON, B J	
9/25/2012	F862972	ANDERSON, B J	
9/25/2012	F862973	ANDERSON, B J	
9/30/2012	F862975	ANDERSON, B J	
10/4/2012	F862976	ANDERSON, B J	
10/8/2012	OF02060	ANDERSON, B J	
10/8/2012	OF02061	ANDERSON, B J	
10/8/2012	OF02062	ANDERSON, B J	
10/8/2012	OF02063	ANDERSON, B J	
10/12/2012	OF02065	ANDERSON, B J	
10/14/2012	OF02066	ANDERSON, B J	
10/14/2012	OF02067	ANDERSON, B J	
10/17/2012	OF02069	ANDERSON, B J	
10/26/2012	OF02072	ANDERSON, B J	
10/27/2012	OF02074	ANDERSON, B J	
10/27/2012	OF02075	ANDERSON, B J	
10/27/2012	OF02076	ANDERSON, B J	
10/27/2012	OF02077	ANDERSON, B J	
10/28/2012	OF02078	ANDERSON, B J	
10/28/2012	OF02079	ANDERSON, B J	
10/28/2012	OF02080	ANDERSON, B J	



2012 - continued			
Date	Citation	Issuing Officer	Witness Officer
10/28/2012	0F02081	ANDERSON, B J	
10/28/2012	0F02082	ANDERSON, B J	
11/11/2012	1F13407	ANDERSON, B J	
11/11/2012	1F13408	ANDERSON, B J	
11/11/2012	1F13409	ANDERSON, B J	
11/11/2012	1F13410	ANDERSON, B J	
11/11/2012	1F13411	ANDERSON, B J	
11/14/2012	1F13412	ANDERSON, B J	
11/14/2012	1F13413	ANDERSON, B J	
11/15/2012	1F13414	ANDERSON, B J	
11/15/2012	1F13415	ANDERSON, B J	
11/15/2012	1F13416	ANDERSON, B J	
11/19/2012	1F13417	ANDERSON, B J	
11/19/2012	1F13418	ANDERSON, B J	
11/19/2012	1F13419	ANDERSON, B J	
11/20/2012	1F13421	ANDERSON, B J	
11/20/2012	1F13422	ANDERSON, B J	
11/23/2012	1F13424	ANDERSON, B J	
11/23/2012	1F13425	ANDERSON, B J	
11/23/2012	1F13426	ANDERSON, B J	
11/23/2012	1F13427	ANDERSON, B J	
11/24/2012	2F09529	ANDERSON, B J	
11/24/2012	2F09530	ANDERSON, B J	
11/24/2012	2F09531	ANDERSON, B J	
11/24/2012	2F09532	ANDERSON, B J	
11/24/2012	2F09533	ANDERSON, B J	
11/24/2012	2F09534	ANDERSON, B J	
11/28/2012	2F09536	ANDERSON, B J	
11/28/2012	2F09537	ANDERSON, B J	
11/29/2012	2F09538	ANDERSON, B J	
11/29/2012	2F09539	ANDERSON, B J	
11/29/2012	2F09540	ANDERSON, B J	
11/29/2012	2F09541	ANDERSON, B J	
12/4/2012	2F09542	ANDERSON, B J	
12/4/2012	2F09543	ANDERSON, B J	
12/7/2012	2F09545	ANDERSON, B J	
12/8/2012	2F09547	ANDERSON, B J	
12/8/2012	2F09548	ANDERSON, B J	
12/9/2012	2F09550	ANDERSON, B J	
12/9/2012	2F09551	ANDERSON, B J	
12/9/2012	2F09552	ANDERSON, B J	
12/12/2012	2F09553	ANDERSON, B J	
12/13/2012	2F69097	ANDERSON, B J	
12/13/2012	2F69098	ANDERSON, B J	
12/13/2012	2F69099	ANDERSON, B J	
2/3/2012	TC184470* Control #: C0704884X	BALL, N R	



2013			
Date	Citation	Issuing Officer	Witness Officer
1/6/2013	2F69103	ANDERSON, B J	
1/6/2013	2F69104	ANDERSON, B J	
1/6/2013	2F69105	ANDERSON, B J	
1/9/2013	2F69107	ANDERSON, B J	
1/10/2013	2F69108	ANDERSON, B J	
1/10/2013	2F69109	ANDERSON, B J	
1/15/2013	2F69111	ANDERSON, B J	
1/15/2013	2F69112	ANDERSON, B J	
1/18/2013	2F69114	ANDERSON, B J	
1/19/2013	2F69115	ANDERSON, B J	
1/19/2013	2F69116	ANDERSON, B J	
1/19/2013	2F69117	ANDERSON, B J	
1/19/2013	2F69118	ANDERSON, B J	
1/20/2013	2F69119	ANDERSON, B J	
1/20/2013	2F69120	ANDERSON, B J	
1/20/2013	2F69121	ANDERSON, B J	
1/20/2013	4F15108	ANDERSON, B J	
1/24/2013	4F15109	ANDERSON, B J	
1/28/2013	4F15110	ANDERSON, B J	
1/28/2013	4F15111	ANDERSON, B J	
2/1/2013	4F15112	ANDERSON, B J	
2/1/2013	4F15113	ANDERSON, B J	
2/1/2013	4F15114	ANDERSON, B J	
2/2/2013	4F15116	ANDERSON, B J	
2/2/2013	4F15117	ANDERSON, B J	
2/2/2013	4F15118	ANDERSON, B J	
2/3/2013	4F15119	ANDERSON, B J	
2/3/2013	4F15120	ANDERSON, B J	
2/3/2013	4F15121	ANDERSON, B J	
2/17/2013	4F15126	ANDERSON, B J	
3/2/2013	4F15129	ANDERSON, B J	
3/2/2013	13-005324	ANDERSON, B J	
2/27/2013	TC194118* Control #: C23256533	TAUBE, L M	



2014			
Date	Citation	Issuing Officer	Witness Officer
8/20/2014	780F585	DERRICK, J R	
8/20/2014	780F586	DERRICK, J R	
8/20/2014	780F587	DERRICK, J R	
8/20/2014	780F588	DERRICK, J R	
8/20/2014	780F589	DERRICK, J R	
8/20/2014	780F590	DERRICK, J R	
8/20/2014	780F591	DERRICK, J R	
9/13/2014	14-021260	DERRICK, J R	
9/24/2014	926F638	DERRICK, J R	
10/2/2014	926F649	DERRICK, J R	
7/4/2014	1C203194* Control #: C27815596	RADFORD, J M	
4/1/2014	188F511	ROBERTS, C F	FRENCH, J E

One officer was assigned a specific patrol vehicle from 2011 to the present. This officer stated to the City that his assigned vehicle was the only vehicle he drove for the time period January 1, 2011 to November 7, 2014. This statement was not considered in the above results due to a lack of corroborating data that this was the only patrol vehicle driven by the officer during this time.



Citations for which we cannot definitively match the patrol vehicle driven at the time of the citation to an SMI, and therefore, are unable to verify what SMI was used to issue the citation:

Year ended December 31, 2011 - 173 Citations
 Year ended December 31, 2012 - 279 Citations
 Year ended December 31, 2013 - 41 Citations
Year ended December 31, 2014 - 34 Citations
 Total - 527 Citations

2011			
Date	Citation	Issuing Officer	Witness Officer
1/3/2011	42676E0	DERRICK, J R	
1/3/2011	42676E1	DERRICK, J R	
1/3/2011	42676E2	DERRICK, J R	
1/3/2011	47288E3	MUSE, J S	
1/4/2011	42676E6	DERRICK, J R	
1/4/2011	42676E7	DERRICK, J R	
1/4/2011	42676E8	DERRICK, J R	
1/4/2011	42676E9	DERRICK, J R	
1/4/2011	47444E0	DERRICK, J R	
1/7/2011	47444E3	DERRICK, J R	
1/9/2011	47444E5	DERRICK, J R	
1/9/2011	47444E6	DERRICK, J R	
1/9/2011	47444E7	DERRICK, J R	
1/9/2011	47444E8	DERRICK, J R	
1/13/2011	47444E9	DERRICK, J R	
1/17/2011	47445E2	DERRICK, J R	
1/18/2011	47445E4	DERRICK, J R	
1/18/2011	47445E5	DERRICK, J R	
1/18/2011	47445E6	DERRICK, J R	
1/18/2011	47445E7	DERRICK, J R	
1/18/2011	47445E8	DERRICK, J R	
1/20/2011	46513E6	CARSWELL, W L	BALL, N R
1/20/2011	46513E7	CARSWELL, W L	BALL, N R
1/20/2011	47288E8	MUSE, J S	
1/21/2011	35691E0	BILBREY, J D	
1/22/2011	35691E1	BILBREY, J D	
1/22/2011	35691E2	BILBREY, J D	
1/22/2011	35691E3	BILBREY, J D	
1/22/2011	54314E6	BILBREY, J D	
1/22/2011	54314E7	BILBREY, J D	
1/22/2011	47446E1	DERRICK, J R	
1/23/2011	54314E9	BILBREY, J D	
1/23/2011	54315E0	BILBREY, J D	
1/23/2011	54315E1	BILBREY, J D	
1/23/2011	54315E2	BILBREY, J D	
1/23/2011	47446E3	DERRICK, J R	
1/23/2011	47446E4	DERRICK, J R	



2011 - continued			
Date	Citation	Issuing Officer	Witness Officer
1/23/2011	53824E6	DERRICK, J R	
1/23/2011	53824E7	DERRICK, J R	
1/23/2011	53824E8	DERRICK, J R	
1/24/2011	53208E1	ALLEN, M J	
1/24/2011	53208E2	ALLEN, M J	
1/25/2011	53209E1	ALLEN, M J	
1/27/2011	54315E5	BILBREY, J D	
1/27/2011	54315E6	BILBREY, J D	
1/27/2011	53824E9	DERRICK, J R	
1/27/2011	53825E0	DERRICK, J R	
1/27/2011	53825E1	DERRICK, J R	
1/28/2011	53209E3	ALLEN, M J	
1/29/2011	53209E7	ALLEN, M J	
1/29/2011	56924E4	ALLEN, M J	
1/29/2011	56924E5	ALLEN, M J	
1/29/2011	56924E9	ALLEN, M J	
1/30/2011	56925E4	ALLEN, M J	
1/31/2011	54315E7	BILBREY, J D	
2/1/2011	53825E2	DERRICK, J R	
2/2/2011	53739E8	CARSWELL, W L	ALLEN, M J
2/2/2011	53739E9	CARSWELL, W L	ALLEN, M J
2/3/2011	56926E4	ALLEN, M J	
2/3/2011	56926E6	ALLEN, M J	
2/4/2011	53825E4	DERRICK, J R	
2/5/2011	54315E9	BILBREY, J D	
2/5/2011	54316E0	BILBREY, J D	
2/5/2011	53825E8	DERRICK, J R	
2/5/2011	53825E9	DERRICK, J R	
2/7/2011	59079E0	ALLEN, M J	
2/7/2011	59079E1	ALLEN, M J	
2/8/2011	59079E4	ALLEN, M J	
2/9/2011	54316E4	BILBREY, J D	
2/9/2011	53826E1	DERRICK, J R	
2/9/2011	53826E2	DERRICK, J R	
2/9/2011	53826E3	DERRICK, J R	
2/9/2011	53826E5	DERRICK, J R	
2/10/2011	53826E6	DERRICK, J R	
2/17/2011	29588E6	BALL, N R	
2/19/2011	54317E0	BILBREY, J D	
2/20/2011	48819E7	EBERHARDT, D L	
2/21/2011	29588E7	BALL, N R	
2/25/2011	29588E8	BALL, N R	
2/25/2011	29588E9	BALL, N R	
2/25/2011	29589E0	BALL, N R	
2/25/2011	29589E1	BALL, N R	
2/25/2011	29589E2	BALL, N R	
2/26/2011	29589E3	BALL, N R	



2011 - continued			
Date	Citation	Issuing Officer	Witness Officer
2/26/2011	29589E4	BALL, N R	
2/26/2011	29589E5	BALL, N R	
2/26/2011	29589E6	BALL, N R	
2/26/2011	61512E4	CARSWELL, W L	BALL, N R
2/27/2011	29589E7	BALL, N R	
2/27/2011	29589E9	BALL, N R	
2/27/2011	29590E0	BALL, N R	
2/27/2011	29590E1	BALL, N R	
2/27/2011	29590E2	BALL, N R	
2/27/2011	29590E3	BALL, N R	
2/28/2011	29590E4	BALL, N R	
2/28/2011	66232E4	BILBREY, J D	
2/28/2011	48820E0	EBERHARDT, D L	
3/1/2011	48820E2	EBERHARDT, D L	
3/1/2011	48820E3	EBERHARDT, D L	
3/7/2011	59079E5	ALLEN, M J	
3/7/2011	59079E6	ALLEN, M J	
3/7/2011	9771E32	BINGAMAN, R A	
3/8/2011	59079E9	ALLEN, M J	
3/8/2011	59080E0	ALLEN, M J	
3/8/2011	59080E1	ALLEN, M J	
3/13/2011	69879E3	BALL, N R	
3/14/2011	66232E7	BILBREY, J D	
3/14/2011	66232E8	BILBREY, J D	
3/16/2011	69879E4	BALL, N R	
3/16/2011	69879E5	BALL, N R	
3/16/2011	69879E6	BALL, N R	
3/18/2011	66233E0	BILBREY, J D	
3/22/2011	69879E9	BALL, N R	
3/23/2011	69880E1	BALL, N R	
3/25/2011	69880E2	BALL, N R	
3/26/2011	59080E6	ALLEN, M J	
3/26/2011	69880E6	BALL, N R	
3/27/2011	79268E2	ALLEN, M J	
3/27/2011	69880E9	BALL, N R	
3/27/2011	69881E0	BALL, N R	
3/30/2011	79268E7	ALLEN, M J	
3/30/2011	79268E8	ALLEN, M J	
3/30/2011	69881E1	BALL, N R	
3/30/2011	69881E2	BALL, N R	
3/30/2011	82888E5	BALL, N R	
3/30/2011	82888E6	BALL, N R	
3/30/2011	82888E7	BALL, N R	
3/30/2011	82888E8	BALL, N R	
4/1/2011	66233E2	BILBREY, J D	
4/1/2011	66233E3	BILBREY, J D	
4/1/2011	66233E4	BILBREY, J D	



2011 - continued			
Date	Citation	Issuing Officer	Witness Officer
4/1/2011	66233E5	BILBREY, J D	
4/7/2011	66234E1	BILBREY, J D	
4/7/2011	66234E2	BILBREY, J D	
4/9/2011	79269E0	ALLEN, M J	
4/15/2011	66234E4	BILBREY, J D	
4/15/2011	8382E21	BILBREY, J D	
4/19/2011	82889E7	BALL, N R	
4/21/2011	8382E23	BILBREY, J D	
4/21/2011	8382E24	BILBREY, J D	
4/24/2011	89213E2	ALLEN, M J	
4/29/2011	82890E1	BALL, N R	
4/30/2011	89531E6	BILBREY, J D	
5/4/2011	89531E7	BILBREY, J D	
6/5/2011	087691E	CARSWELL, W L	BALL, N R
6/5/2011	087692E	CARSWELL, W L	BALL, N R
6/5/2011	087693E	CARSWELL, W L	BALL, N R
6/11/2011	094449E	BILBREY, J D	
6/26/2011	094453E	BILBREY, J D	
8/6/2011	094464E	BILBREY, J D	
8/16/2011	094467E	BILBREY, J D	
8/16/2011	094468E	BILBREY, J D	
8/16/2011	403133E	BILBREY, J D	
8/16/2011	403134E	BILBREY, J D	
8/16/2011	403135E	BILBREY, J D	
8/25/2011	344211E	BRUCHON, D V	WEAVER, T K
9/7/2011	97039E8	WEAVER, T K	
9/8/2011	97040E0	WEAVER, T K	
10/10/2011	550026E	ANDERSON, B J	
5/3/2011	11-011502	BALL, N R	
1/3/2011	TC171869* Control #: C11362877	SHELTON, B L	
1/4/2011	TC172045* Control #: C11379672	DERRICK, J R	
3/16/2011	TC173950* Control #: C13534489	BALL, N R	
3/16/2011	TC173951* Control #: C13534470	BALL, N R	
3/16/2011	TC173948* Control #: C13534497	BALL, N R	
4/6/2011	TC 175033* Control #: C11383157	BROWN, J D	
5/12/2011	TC175763* Control #: C16003298	DELROSARIO, I	BALL, N R
9/27/2011	10179816* Control #: C11888046	WARD, S L	
10/24/2011	TC180628* Control #: C11888070	WARD, S L	
10/24/2011	TC 180627* Control #: C11888062	WARD, S L	
11/16/2011	TC181426* Control #: C87903486	BINGAMAN, R A	
12/12/2011	TC182460* Control #: C04106695	HALFORD, E L	
12/13/2011	TC182532* Control #: C04106709	HALFORD, E L	



2012			
Date	Citation	Issuing Officer	Witness Officer
1/23/2012	989108E	ALLEN, M J	
1/23/2012	989109E	ALLEN, M J	
1/23/2012	989110E	ALLEN, M J	
1/23/2012	989111E	ALLEN, M J	
1/24/2012	989115E	ALLEN, M J	
2/1/2012	989117E	ALLEN, M J	
2/1/2012	989118E	ALLEN, M J	
2/1/2012	989119E	ALLEN, M J	
2/1/2012	989120E	ALLEN, M J	
2/1/2012	989121E	ALLEN, M J	
2/1/2012	989122E	ALLEN, M J	
2/1/2012	989123E	ALLEN, M J	
2/1/2012	989124E	ALLEN, M J	
2/1/2012	989125E	ALLEN, M J	
2/1/2012	F046538	ALLEN, M J	
2/1/2012	F046539	ALLEN, M J	
2/1/2012	F046540	ALLEN, M J	
2/2/2012	F046541	ALLEN, M J	
2/2/2012	F046542	ALLEN, M J	
2/2/2012	F046543	ALLEN, M J	
2/2/2012	F046544	ALLEN, M J	
2/2/2012	F046545	ALLEN, M J	
2/2/2012	F046546	ALLEN, M J	
2/2/2012	F046547	ALLEN, M J	
2/2/2012	F046548	ALLEN, M J	
2/2/2012	F046549	ALLEN, M J	
2/6/2012	F046551	ALLEN, M J	
2/6/2012	F046552	ALLEN, M J	
2/6/2012	F046553	ALLEN, M J	
2/6/2012	F046554	ALLEN, M J	
2/6/2012	F046559	ALLEN, M J	
2/6/2012	F046560	ALLEN, M J	
2/6/2012	F046561	ALLEN, M J	
2/6/2012	F069090	ALLEN, M J	
2/6/2012	F069091	ALLEN, M J	
2/6/2012	F069092	ALLEN, M J	
2/7/2012	F069099	ALLEN, M J	
2/7/2012	F069100	ALLEN, M J	
2/7/2012	F069101	ALLEN, M J	
2/7/2012	F069102	ALLEN, M J	
2/7/2012	F069103	ALLEN, M J	
2/7/2012	F069104	ALLEN, M J	
2/7/2012	F069105	ALLEN, M J	
2/7/2012	F069106	ALLEN, M J	
2/7/2012	F069107	ALLEN, M J	
2/7/2012	F069110	ALLEN, M J	
2/7/2012	F069111	ALLEN, M J	



2012 - continued			
Date	Citation	Issuing Officer	Witness Officer
2/7/2012	F105886	ALLEN, M J	
2/11/2012	F074136	ALLEN, M J	
2/11/2012	F074137	ALLEN, M J	
2/11/2012	F074138	ALLEN, M J	
2/11/2012	F074140	ALLEN, M J	
2/12/2012	F074141	ALLEN, M J	
2/12/2012	F074142	ALLEN, M J	
2/12/2012	F074143	ALLEN, M J	
2/12/2012	F074144	ALLEN, M J	
2/12/2012	F074145	ALLEN, M J	
2/12/2012	F074146	ALLEN, M J	
2/12/2012	F074147	ALLEN, M J	
2/12/2012	F074148	ALLEN, M J	
2/12/2012	F074149	ALLEN, M J	
2/12/2012	F074150	ALLEN, M J	
2/12/2012	F074151	ALLEN, M J	
2/12/2012	F074152	ALLEN, M J	
2/12/2012	F074153	ALLEN, M J	
2/12/2012	F074154	ALLEN, M J	
2/15/2012	F074156	ALLEN, M J	
2/15/2012	F074157	ALLEN, M J	
2/15/2012	F074158	ALLEN, M J	
2/15/2012	F074159	ALLEN, M J	
2/15/2012	F105881	ALLEN, M J	
2/15/2012	F105882	ALLEN, M J	
2/15/2012	F105883	ALLEN, M J	
2/15/2012	F105884	ALLEN, M J	
2/15/2012	F105885	ALLEN, M J	
2/16/2012	F105891	ALLEN, M J	
2/16/2012	F105892	ALLEN, M J	
2/16/2012	F105896	ALLEN, M J	
2/16/2012	F105897	ALLEN, M J	
2/16/2012	F105898	ALLEN, M J	
2/20/2012	F105900	ALLEN, M J	
2/20/2012	F105901	ALLEN, M J	
2/20/2012	F112307	ALLEN, M J	
2/21/2012	F112313	ALLEN, M J	
2/21/2012	F112314	ALLEN, M J	
2/21/2012	F112315	ALLEN, M J	
2/21/2012	F112316	ALLEN, M J	
2/21/2012	F112317	ALLEN, M J	
2/21/2012	F112318	ALLEN, M J	
2/24/2012	F112327	ALLEN, M J	
2/24/2012	F112328	ALLEN, M J	
2/24/2012	F112329	ALLEN, M J	
2/24/2012	F112330	ALLEN, M J	
2/24/2012	F112331	ALLEN, M J	



2012 - continued			
Date	Citation	Issuing Officer	Witness Officer
2/24/2012	F142868	ALLEN, M J	
2/24/2012	F142869	ALLEN, M J	
2/24/2012	F142870	ALLEN, M J	
2/24/2012	F142871	ALLEN, M J	
2/24/2012	F142873	ALLEN, M J	
2/24/2012	F142874	ALLEN, M J	
2/24/2012	F142875	ALLEN, M J	
2/26/2012	F148182	ALLEN, M J	
2/29/2012	F148185	ALLEN, M J	
2/29/2012	F148186	ALLEN, M J	
2/29/2012	F148187	ALLEN, M J	
2/29/2012	F148188	ALLEN, M J	
2/29/2012	F153776	ALLEN, M J	
2/29/2012	F153780	ALLEN, M J	
2/29/2012	F153781	ALLEN, M J	
3/1/2012	F153785	ALLEN, M J	
3/1/2012	F153791	ALLEN, M J	
3/1/2012	F153792	ALLEN, M J	
3/1/2012	F153793	ALLEN, M J	
3/1/2012	F153794	ALLEN, M J	
3/1/2012	F153795	ALLEN, M J	
3/5/2012	F153796	ALLEN, M J	
3/6/2012	F182897	ALLEN, M J	
3/6/2012	F182898	ALLEN, M J	
3/6/2012	F182899	ALLEN, M J	
3/6/2012	F182900	ALLEN, M J	
3/6/2012	F182901	ALLEN, M J	
3/6/2012	F182902	ALLEN, M J	
3/6/2012	F182903	ALLEN, M J	
3/6/2012	F182904	ALLEN, M J	
3/15/2012	F182913	ALLEN, M J	
3/15/2012	F182914	ALLEN, M J	
3/15/2012	F182915	ALLEN, M J	
3/19/2012	F222907	ALLEN, M J	
3/19/2012	F222908	ALLEN, M J	
3/19/2012	F222909	ALLEN, M J	
3/19/2012	F222910	ALLEN, M J	
3/25/2012	F242364	ALLEN, M J	
3/29/2012	F272362	ALLEN, M J	
4/2/2012	F272365	ALLEN, M J	
4/2/2012	F272373	ALLEN, M J	
4/7/2012	F292951	ALLEN, M J	
4/8/2012	F292952	ALLEN, M J	
5/15/2012	F330498	ALLEN, M J	
5/18/2012	F330502	ALLEN, M J	
5/19/2012	F330509	ALLEN, M J	
5/20/2012	F478605	ALLEN, M J	



2012 - continued			
Date	Citation	Issuing Officer	Witness Officer
5/23/2012	F478611	ALLEN, M J	
5/24/2012	F478612	ALLEN, M J	
5/24/2012	F478613	ALLEN, M J	
5/24/2012	F498790	ALLEN, M J	
5/29/2012	F498792	ALLEN, M J	
6/1/2012	F498797	ALLEN, M J	
6/1/2012	F498799	ALLEN, M J	
6/1/2012	F498800	ALLEN, M J	
6/11/2012	F542018	ALLEN, M J	
6/30/2012	F657242	ALLEN, M J	
7/27/2012	F673819	ALLEN, M J	
9/4/2012	F673828	ALLEN, M J	
9/4/2012	F673829	ALLEN, M J	
9/4/2012	F673830	ALLEN, M J	
9/4/2012	F673831	ALLEN, M J	
10/11/2012	OF48364	ALLEN, M J	
10/11/2012	OF48365	ALLEN, M J	
10/11/2012	OF48366	ALLEN, M J	
10/11/2012	OF48367	ALLEN, M J	
10/11/2012	F673835	ALLEN, M J	
10/11/2012	F673836	ALLEN, M J	
10/11/2012	F673837	ALLEN, M J	
10/11/2012	F673838	ALLEN, M J	
10/11/2012	F673839	ALLEN, M J	
10/11/2012	F673834	ALLEN, M J	
10/19/2012	OF67589	ALLEN, M J	
12/14/2012	OF67594	ALLEN, M J	
12/14/2012	OF67595	ALLEN, M J	
12/14/2012	OF67596	ALLEN, M J	
12/14/2012	OF67597	ALLEN, M J	
12/14/2012	OF67598	ALLEN, M J	
12/15/2012	OF67599	ALLEN, M J	
12/15/2012	OF67600	ALLEN, M J	
12/15/2012	OF67601	ALLEN, M J	
12/15/2012	OF67602	ALLEN, M J	
12/15/2012	OF67603	ALLEN, M J	
12/15/2012	OF67604	ALLEN, M J	
12/15/2012	OF67605	ALLEN, M J	
12/15/2012	OF67606	ALLEN, M J	
12/15/2012	OF67607	ALLEN, M J	
12/16/2012	2F95463	ALLEN, M J	
12/16/2012	2F95464	ALLEN, M J	
12/16/2012	2F95465	ALLEN, M J	
12/16/2012	2F95466	ALLEN, M J	
12/16/2012	2F95467	ALLEN, M J	
12/16/2012	2F95468	ALLEN, M J	
12/16/2012	2F95469	ALLEN, M J	



2012 - continued			
Date	Citation	Issuing Officer	Witness Officer
12/16/2012	2F95470	ALLEN, M J	
12/19/2012	2F95471	ALLEN, M J	
12/19/2012	2F95472	ALLEN, M J	
12/19/2012	2F95473	ALLEN, M J	
12/19/2012	2F95474	ALLEN, M J	
12/20/2012	2F95476	ALLEN, M J	
12/20/2012	2F95477	ALLEN, M J	
1/24/2012	12-002307	ALLEN, M J	
1/24/2012	TC183924* Control #: C18312832	ALLEN, M J	
7/21/2012	F571079	ANDERSON, B J	
7/21/2012	F571080	ANDERSON, B J	
7/25/2012	F571081	ANDERSON, B J	
7/25/2012	F571082	ANDERSON, B J	
7/25/2012	F571083	ANDERSON, B J	
7/25/2012	F571084	ANDERSON, B J	
7/17/2012	F393457	BILBREY, J D	
8/23/2012	F393462	BILBREY, J D	
9/29/2012	F865756	BILBREY, J D	
10/27/2012	F865760	BILBREY, J D	
11/5/2012	F865762	BILBREY, J D	
11/5/2012	F865763	BILBREY, J D	
11/10/2012	F865766	BILBREY, J D	
11/10/2012	F865767	BILBREY, J D	
8/1/2012	TC189249* Control #: C18307782	BURGE, O W	ALLEN, M J
8/21/2012	TC190117* Control #: C18307928	BURGE, O W	ALLEN, M J
8/21/2012	10190114* Control #: C18307938	BURGE, O W	ALLEN, M J
5/4/2012	TC186684* Control #: C17726951	DAVIS, S P	
1/28/2012	TC184097* Control #: C04107594	HALFORD, E L	
2/11/2012	523612E	HALFORD, E L	
2/11/2012	523613E	HALFORD, E L	
2/11/2012	610805E	HALFORD, E L	
2/16/2012	610806E	HALFORD, E L	
2/21/2012	610808E	HALFORD, E L	
2/21/2012	610809E	HALFORD, E L	
2/24/2012	610810E	HALFORD, E L	
2/24/2012	610811E	HALFORD, E L	
2/26/2012	610812E	HALFORD, E L	
5/18/2012	610820E	HALFORD, E L	
6/1/2012	610823E	HALFORD, E L	
6/1/2012	610824E	HALFORD, E L	
6/2/2012	610825E	HALFORD, E L	
6/11/2012	610828E	HALFORD, E L	
6/25/2012	F540488	HALFORD, E L	
6/25/2012	F540489	HALFORD, E L	
6/25/2012	F540490	HALFORD, E L	
6/25/2012	F540491	HALFORD, E L	
6/26/2012	F540492	HALFORD, E L	



2012 - continued			
Date	Citation	Issuing Officer	Witness Officer
6/30/2012	F540495	HALFORD, E L	
10/5/2012	OF10890	HALFORD, E L	
10/7/2012	OF10891	HALFORD, E L	
12/14/2012	OF10897	HALFORD, E L	
9/26/2012	TC190953* Control #: C18309629	JONES, K C	ALLEN, M J
9/26/2012	TC190954* Control #: C18309610	JONES, K C	ALLEN, M J
9/26/2012	TC190952* Control #: C18309637	JONES, K C	ALLEN, M J
9/27/2012	TC190962* !Control #: C18309688	JONES, K C	ALLEN, M J
9/27/2012	TC190957* Control #: C18309661	JONES, K C	ALLEN, M J
9/27/2012	TC190951* Control #: C18309645	JONES, K C	ALLEN, M J
9/27/2012	TC190955* Control #: C18309653	JONES, K C	ALLEN, M J
9/27/2012	TC190958* Control #: C1830967X	JONES, K C	ALLEN, M J
10/9/2012	F901705	JONES, T J	
10/12/2012	F901706	JONES, T J	
11/6/2012	OF61810	JONES, T J	
11/6/2012	OF61811	JONES, T J	
11/23/2012	OF61818	JONES, T J	
9/3/2012	TC190566* Control #: C18306263	KRUTHAAPT, T M	ALLEN, M J
12/5/2012	TC192452* Control #: C22731580	KULAKOVA, O	SHELTON, B L
12/11/2012	TC192506* Control #: C2273170X	KULAKOVA, O	SHELTON, B L
9/12/2012	F941037	RODRIGUEZ, M A	ALLEN, M J
9/12/2012	10190561* Control #: C18306719	RODRIGUEZ, M A	ALLEN, M J
9/13/2012	F941039	RODRIGUEZ, M A	ALLEN, M J
9/13/2012	F941040	RODRIGUEZ, M A	ALLEN, M J
9/13/2012	F941041	RODRIGUEZ, M A	ALLEN, M J
9/13/2012	F941043	RODRIGUEZ, M A	ALLEN, M J
9/13/2012	F941038	RODRIGUEZ, M A	
9/9/2012	TC190383* Control #: C21104337	SATTERFIELD, J L	
10/7/2012	TC191028* Control #: C13539464	SATTERFIELD, J L	
10/11/2012	TC191239* Control #: C13539502	SATTERFIELD, J L	
10/12/2012	TC191251* Control #: C13538042	SATTERFIELD, J L	
10/20/2012	TC191348* Control #: C13536131	SATTERFIELD, J L	
10/21/2012	TC 191349* Control #: C13538166	SATTERFIELD, J L	
10/21/2012	TC191350* Control it. C13538174	SATTERFIELD, J L	
11/2/2012	TC191691* Control #: C13535272	SATTERFIELD, J L	
11/8/2012	TC191795* Control #: C13535345	SATTERFIELD, J L	
11/8/2012	TC191796* Control #: C13535353	SATTERFIELD, J L	
6/1/2012	TC187549* Control #: C20892277	SHELTON, B L	
6/17/2012	TC187844* Control #: CO2892455	SHELTON, B L	
6/17/2012	TC187843* Control #: C20892463	SHELTON, B L	
7/14/2012	TC188658* Control #: C19312720	SHELTON, B L	
9/28/2012	TC190906* Control C17098527	SHELTON, B L	
10/11/2012	TCI 91229* Control #: C17098535	SHELTON, B L	
8/24/2012	TC190131* Control #: C20326824	SUMMEROW, A R	



2013			
Date	Citation	Issuing Officer	Witness Officer
1/2/2013	3F11738	ALLEN, M J	
1/2/2013	3F11740	ALLEN, M J	
1/2/2013	3F11741	ALLEN, M J	
1/2/2013	3F11742	ALLEN, M J	
1/2/2013	3F11743	ALLEN, M J	
1/3/2013	3F11744	ALLEN, M J	
1/3/2013	3F11745	ALLEN, M J	
1/3/2013	3F11746	ALLEN, M J	
1/3/2013	3F11747	ALLEN, M J	
1/3/2013	3F11748	ALLEN, M J	
1/3/2013	3F11749	ALLEN, M J	
1/3/2013	3F11750	ALLEN, M J	
1/3/2013	3F11751	ALLEN, M J	
2/4/2013	3F70789	ALLEN, M J	
2/4/2013	3F70790	ALLEN, M J	
2/4/2013	3F70791	ALLEN, M J	
2/4/2013	4F77677	ALLEN, M J	
2/4/2013	3F70788	ALLEN, M J	
2/4/2013	3F70795	ALLEN, M J	
2/4/2013	TC193698* Control #: C20318570	ALLEN, M J	
2/5/2013	TC193694* Control #: C20318597	ALLEN, M J	
2/5/2013	TC193695* Control #: C20318600	ALLEN, M J	
2/5/2013	TC193676* Control #: C20318619	ALLEN, M J	
8/13/2013	11F9102	CABE, A R	
8/13/2013	11F9103	CABE, A R	
8/13/2013	11F9104	CABE, A R	
8/13/2013	11F9105	CABE, A R	
8/14/2013	13-020312	CABE, A R	
4/13/2013	1F06130	EBERHARDT, D L	
4/13/2013	7F46190	EBERHARDT, D L	
4/13/2013	7F46191	EBERHARDT, D L	
7/8/2013	7F46198	EBERHARDT, D L	
8/3/2013	F934609	FRENCH, J E	
8/4/2013	F934610	FRENCH, J E	
12/31/2013	37F0071	HUNTER, J B	ZEIGLER, J M
12/31/2013	37F0072	HUNTER, J B	ZEIGLER, J M
12/31/2013	37F0073	HUNTER, J B	ZEIGLER, J M
12/31/2013	45F3854	MAY, J	ZEIGLER, J M
3/22/2013	TC194574* Control #: C22732218	SUMMEROW, A R	
9/3/2013	TC197983* Control #: C23823993	TAUBE, L M	
9/17/2013	TC198085* Control #: C25543041	TAUBE, L M	



2014			
Date	Citation	Issuing Officer	Witness Officer
7/28/2014	319F051	COHEN, D T	
8/4/2014	319F056	COHEN, D T	
4/25/2014	277F473	FRY, C S	
4/25/2014	277F475	FRY, C S	
4/25/2014	277F476	FRY, C S	
4/26/2014	185F032	FRY, C S	
7/17/2014	658F757	HALFORD, E L	
3/31/2014	37F0085	HUNTER, J B	ZEIGLER, J M
1/23/2014	45F3857	MAY, J	ZEIGLER, J M
8/16/2014	14-018637	RADFORD, J M	
4/1/2014	30F6872	RODRIGUEZ, M A	
4/8/2014	196F492	WARD, R	
4/8/2014	196F493	WARD, R	
4/8/2014	196F494	WARD, R	
4/8/2014	196F495	WARD, R	
5/24/2014	312F903	WARD, R	
5/24/2014	312F904	WARD, R	
5/25/2014	14-011525	WARD, R	
7/1/2014	445F383	WARD, R	
7/14/2014	445F384	WARD, R	
7/14/2014	445F385	WARD, R	
7/15/2014	445F386	WARD, R	
7/15/2014	445F387	WARD, R	
7/15/2014	445F388	WARD, R	
7/21/2014	445F391	WARD, R	
7/29/2014	445F393	WARD, R	
7/29/2014	445F394	WARD, R	
8/1/2014	445F396	WARD, R	
8/3/2014	445F397	WARD, R	
8/21/2014	445F400	WARD, R	
8/21/2014	730F019	WARD, R	
8/27/2014	730F022	WARD, R	
8/27/2014	730F023	WARD, R	
8/29/2014	730F024	WARD, R	

