



SAFER TOGETHER

APD MULTI-YEAR WORK PLAN

APD Multi-Year Work Plan

- ▶ The City Council vision for Asheville, adopted in January 2016, seeks to continue to be a city where all people experience a high quality of life.
- ▶ To accomplish this vision, the City has made significant investment in the basic needs of the community such as:
 - ▶ Food Security (food action plan),
 - ▶ Water (water utility)
 - ▶ Shelter (affordable housing)
- ▶ The Asheville Police Department's Multi-Year Work Plan known as "Safer Together," lays out a strategic approach for supporting an equally important basic community need: **safety**.

APD Multi-Year Work Plan

- ▶ Asheville, a community that is recognized as a great place to live.
- ▶ Based on the community's quality of life and vitality, Asheville has realized significant growth in population, development and tourism over the past decade.
 - ▶ The community's residential population has grown to an estimated 90,000, while its daytime population is estimated at 161,000
 - ▶ The Department of Planning and Urban Development lists 22 large scale development projects in the downtown area alone
 - ▶ According to the Tourism Development Authority, the number of visitors to the city has grown from approximately 8 million people in 2009, to over 10 million visitors in 2015.

APD Multi-Year Work Plan

- ▶ At the same time, the continued growth also presents challenges.
- ▶ An example of the challenges presented by such growth is the impact on livability ratings, as published on Areavibes.com:

Asheville, NC Livability

Livability	74	Amenities	A+
Cost of Living	B	Crime	F
Education	B	Employment	C
Housing	C	Weather	A

APD Multi-Year Work Plan

- ▶ In regard to the grade of “F” in the crime category, Areavibes.com references the following factors:
 - For 2015, the overall crime rate in Asheville is 90% higher than the national average, and 75% higher than the rest of North Carolina;
 - In Asheville you have a 1 in 19 chance of becoming a victim of any crime.
 - Gives Asheville very low ratings in terms of safety.
 - Asheville has 2.9 police employees per 1,000 residents in comparison to 4.8 police employees per 1,000 residents across North Carolina.
- ▶ Asheville is generally a safe community in which to live, work and play, however, unless resources are provided to address the crime and safety challenges that come with growth, the trends recognized by sources such as Areavibes.com could continue to negatively impact the perceived and real sense of safety in the community.

APD Multi-Year Work Plan

- ▶ The growth of the City has created a substantial increase in demand for services by the Police Department.
- ▶ Calls for service have increased by an average of 1,000 per year for the past eight years and are projected to continue at or above that rate with the city's current planned growth.
- ▶ In FY-2016, APD officers responded to over 116,000 calls for service.
- ▶ If growth remains consistent, that number is expected to rise to nearly 121,000 in the next two years.
- ▶ In addition to calls for service, officer workload also includes traffic enforcement, foot and bike patrols, community engagement and many other duties related to community policing.

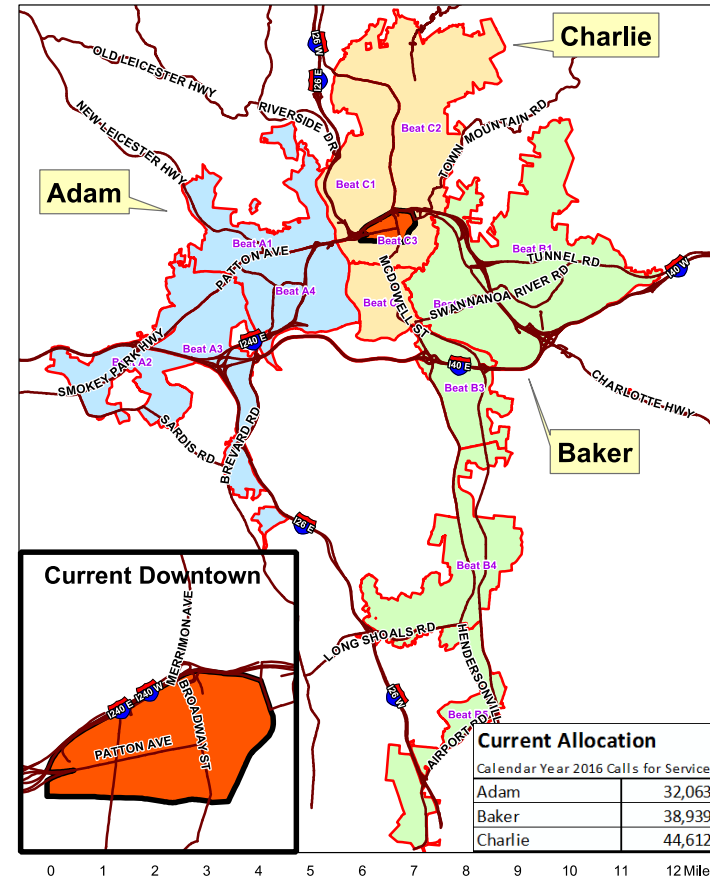
APD Multi-Year Work Plan

- ▶ More growth is planned and expected, i.e. South Slope, RAD, South Asheville, etc
- ▶ NO officers have been added to address the growth of our city or the increasing demands for police services in those areas.
- ▶ APD is requesting 12 additional officer, two sergeants, and one lieutenant position to address these needs.
- ▶ The addition of these resources are necessary to maintain our current level of service.
- ▶ A minimum of two years will be required to hire and train these positions.

APD Multi-Year Work Plan

Current Allocation

- ▶ Current APD Districts were established in 2015
- ▶ Charlie District, which includes Downtown accounts for nearly 40% of CFS
- ▶ Baker District, which includes South Asheville accounts for 33%, but response times are affected by traffic challenges.
- ▶ Adam District accounts for 28% of CFS

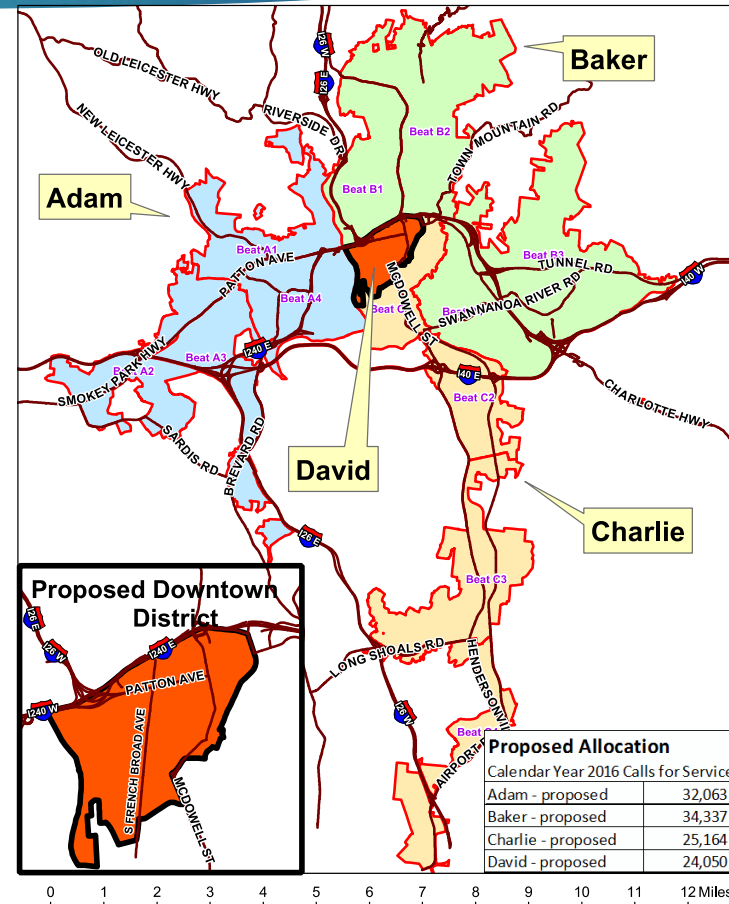


APD Multi-Year Work Plan

Proposed Allocation



- ▶ Proposed Districts will expand and add resources to the Downtown, South Slope, and RAD, while creating a South Asheville District.
- ▶ New CFS distribution:
 - ▶ Adam 28%
 - ▶ Baker 30%
 - ▶ Charlie 22%
 - ▶ David 21%



APD Multi-Year Work Plan

- ▶ DTU began in 2010 and was been expanded two times during 2015 to address the massive demand for police services due to growth in tourism and activity in the Downtown.
- ▶ Tourism growth from 8 million in 2009 to over 10 million in 2015. Growth continues.
- ▶ All staffing for DTU came from internal police resources, no new positions were added.
- ▶ Continuing internal vacancies in Criminal Investigations, Drug Suppression, Traffic and other functions.

Downtown

Part 1 Crime

2016

Rape	2
Robbery	24
Aggravated Assault	31
Agg - Domestic	3
Agg - NotDomestic	28
Total Violent	57

Burglary	18
Larceny	319
Car B&E	75
Shoplifting	61
Larceny - Other	183
Stolen Vehicle	18
Total Property	355

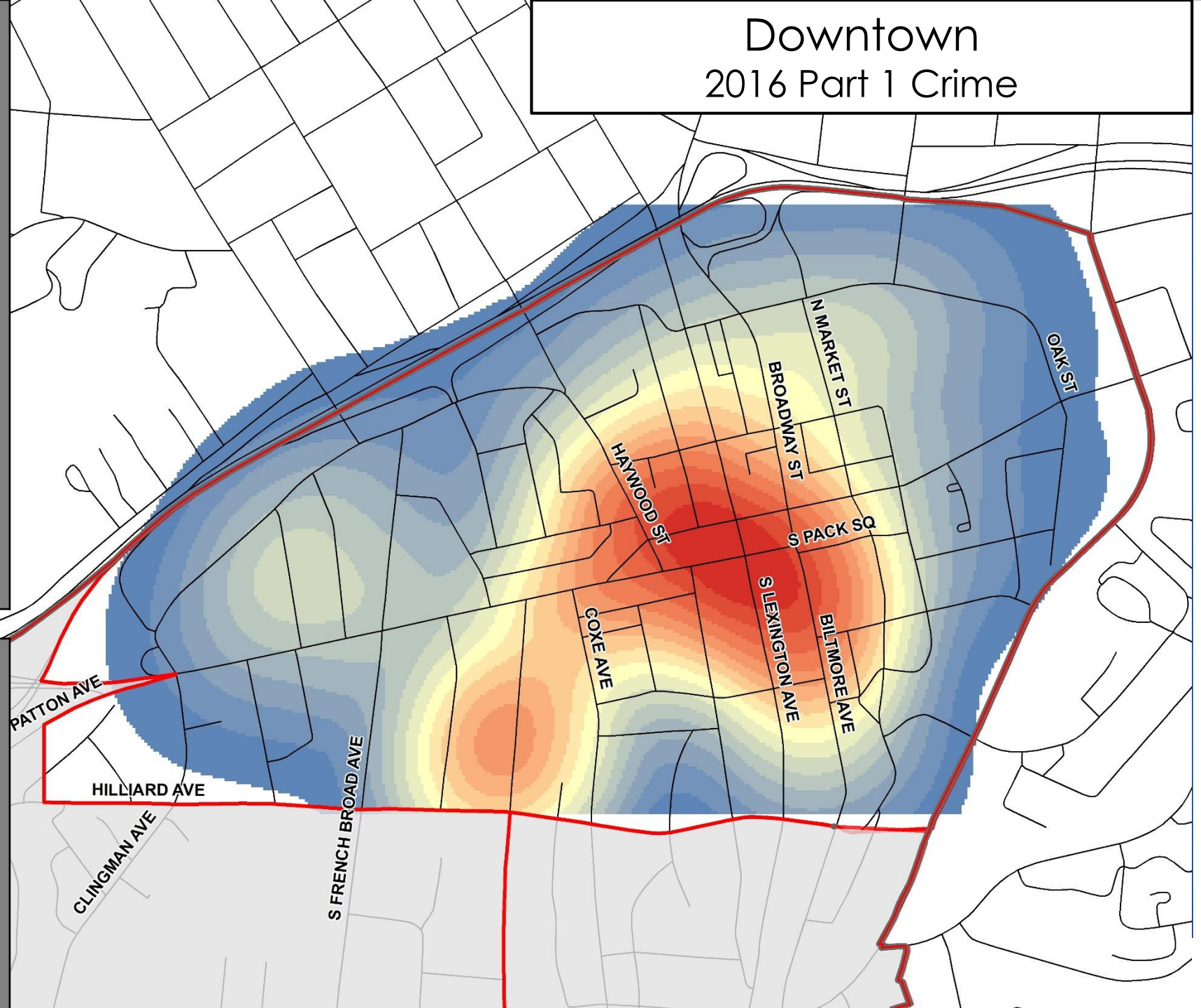
Total Part 1 Crime	412
---------------------------	------------

Nuisance Crime

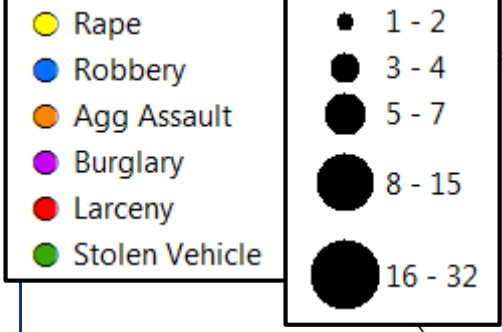
2016

Simple Assault	166
Simple - Domestic	30
Simple - NotDomestic	136
Vandalism	200
Disorderly Conduct	370
Drug Offenses	496
DWI	46
Liquor Law Violation	625
Trespassing	708
Panhandling	123

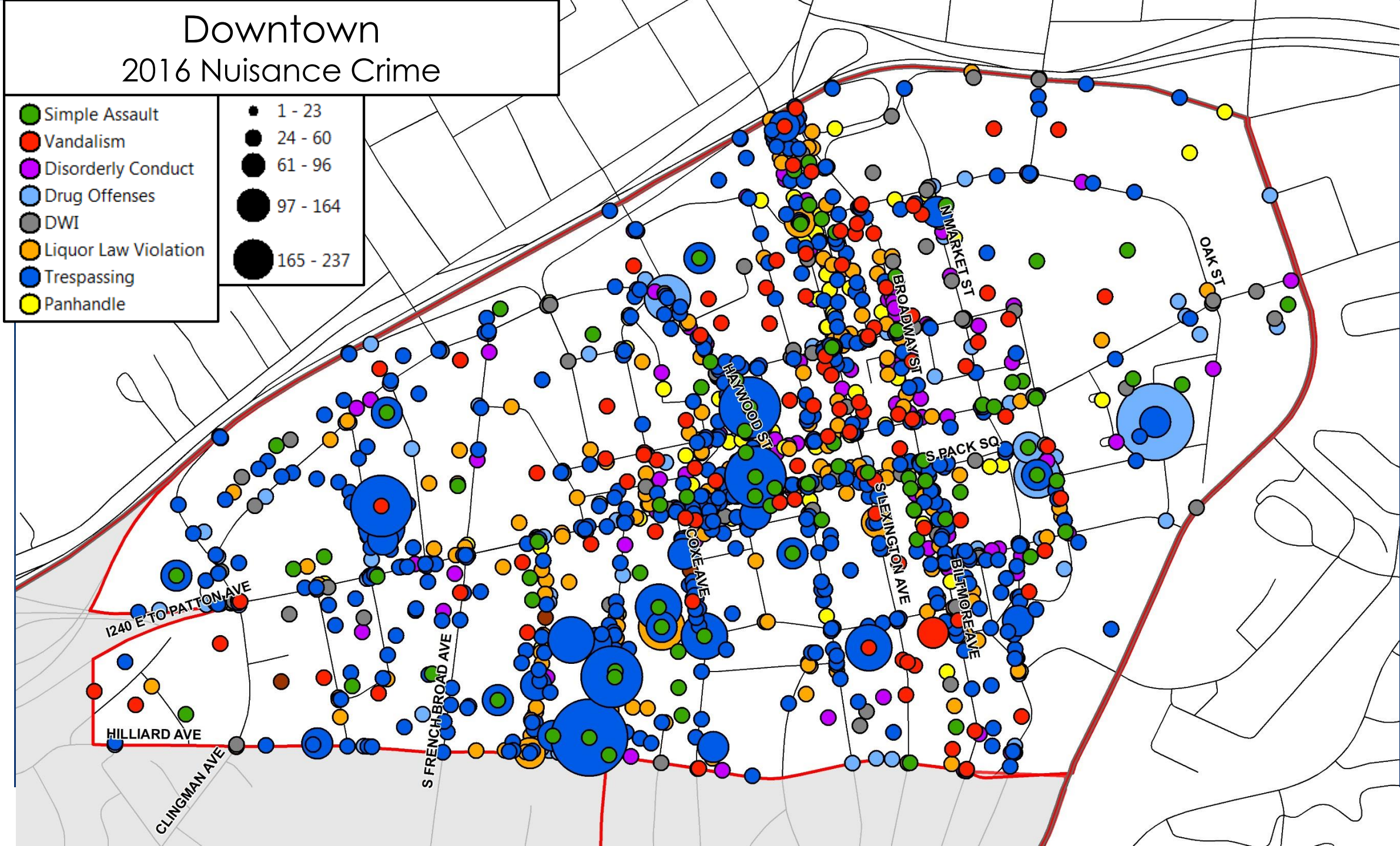
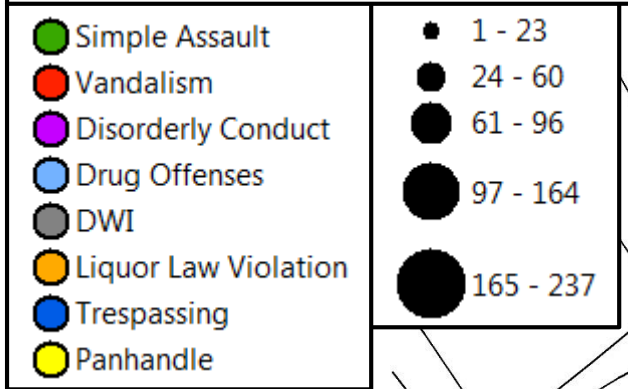
Downtown 2016 Part 1 Crime



Downtown 2016 Part 1 Crime



Downtown 2016 Nuisance Crime



South Slope

HILLIARD AVE

South Slope 2016 Part 1 Crime

Part 1 Crime

2016

Rape	0
Robbery	1
Aggravated Assault	0
Agg - Domestic	0
Agg - NotDomestic	0
Total Violent	1

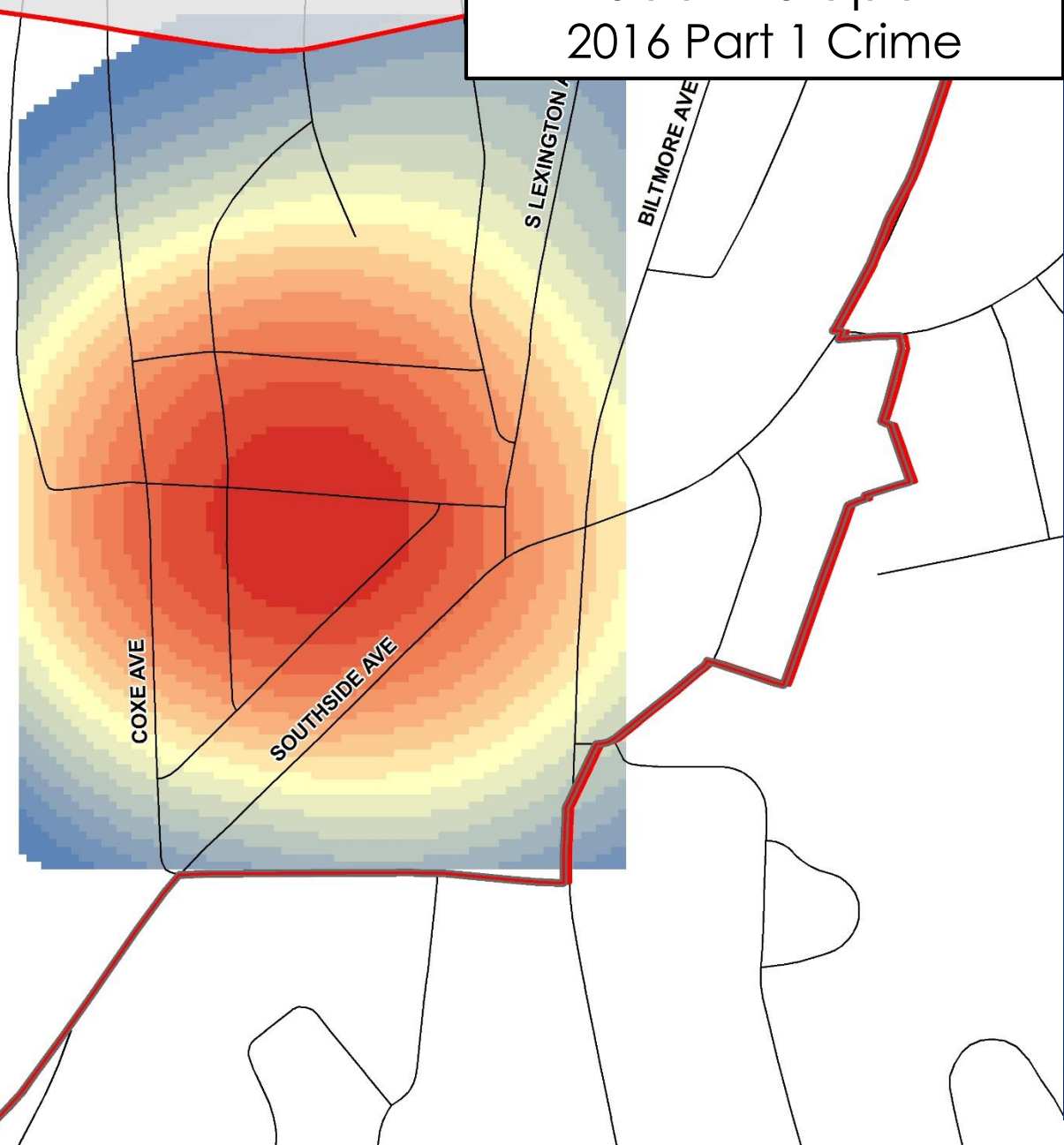
Burglary	3
Larceny	19
Car B&E	10
Shoplifting	0
Larceny - Other	9
Stolen Vehicle	1
Total Property	23

Total Part 1 Crime	24
---------------------------	-----------

Nuisance Crime

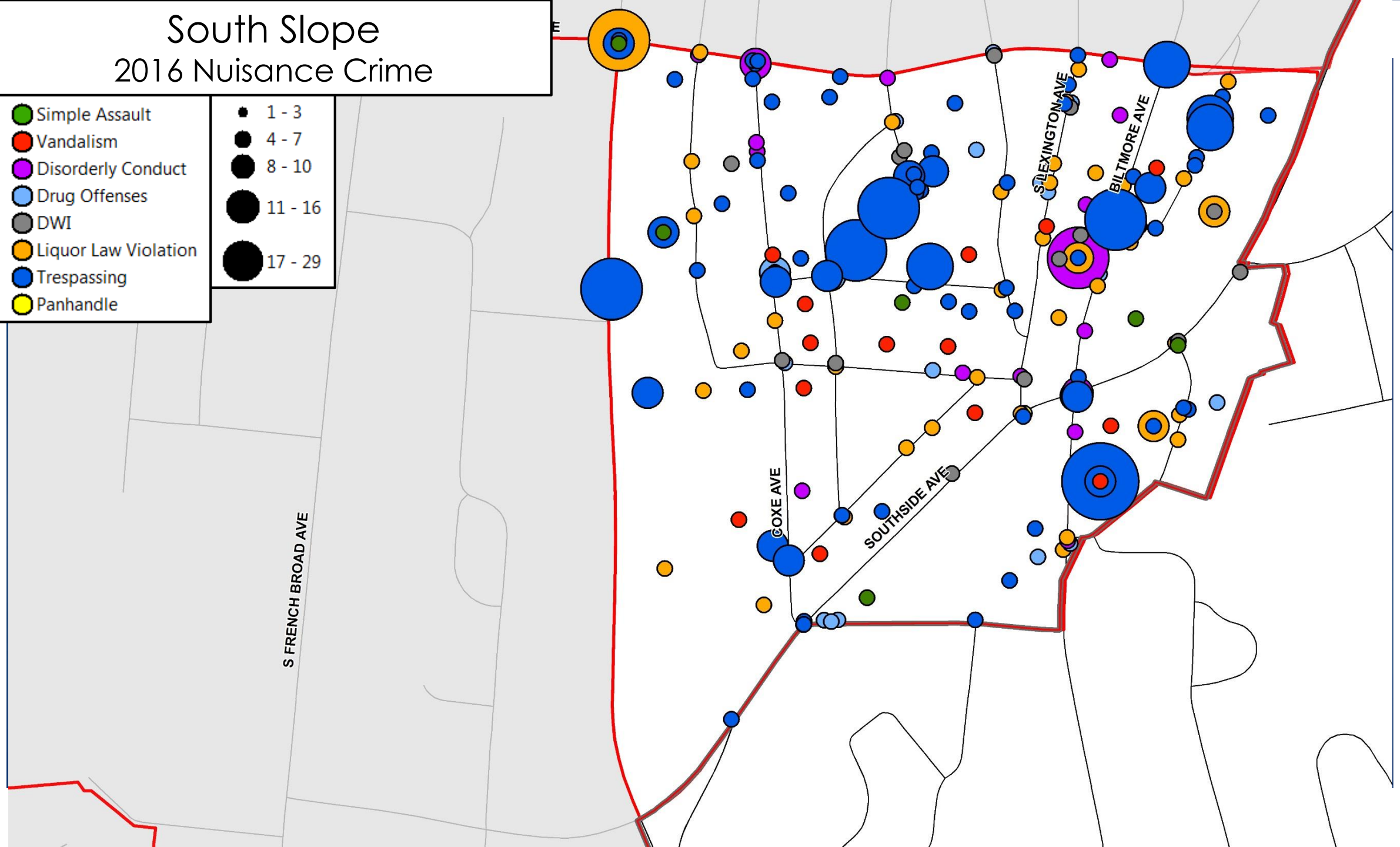
2016

Simple Assault	9
Simple - Domestic	2
Simple - NotDomestic	7
Vandalism	18
Disorderly Conduct	22
Drug Offenses	35
DWI	3
Liquor Law Violation	63
Trespassing	53
Panhandling	5



South Slope 2016 Nuisance Crime

● Simple Assault	● 1 - 3
● Vandalism	● 4 - 7
● Disorderly Conduct	● 8 - 10
● Drug Offenses	● 11 - 16
● DWI	● 17 - 29
● Liquor Law Violation	● 17 - 29
● Trespassing	
● Panhandle	



River Arts District

Part 1 Crime

2016

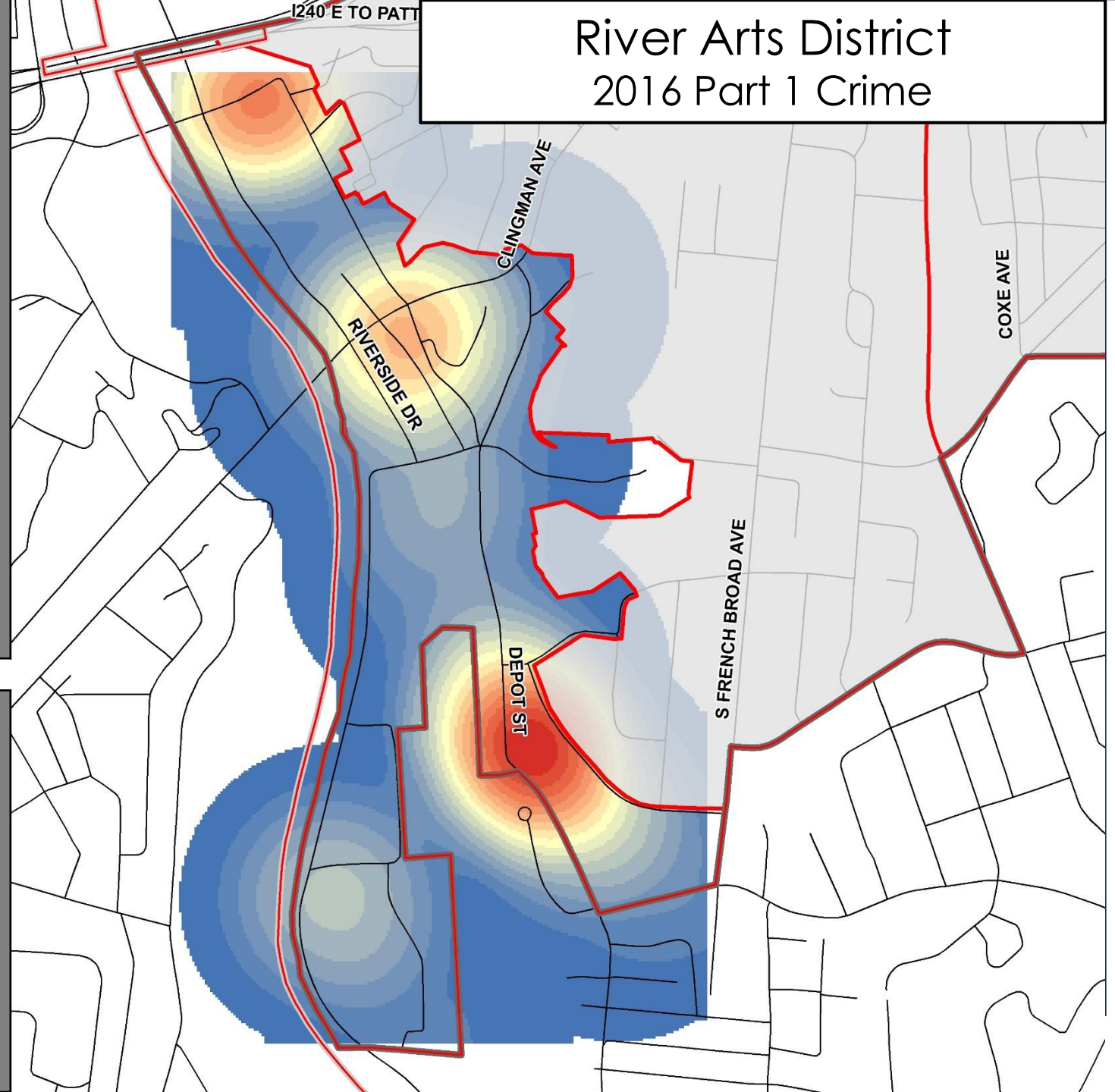
Rape	2
Robbery	2
Aggravated Assault	2
Agg - Domestic	0
Agg - NotDomestic	2
Total Violent	6
Burglary	14
Larceny	22
Car B&E	10
Shoplifting	2
Larceny - Other	10
Stolen Vehicle	5
Total Property	41
Total Part 1 Crime	47

Nuisance Crime

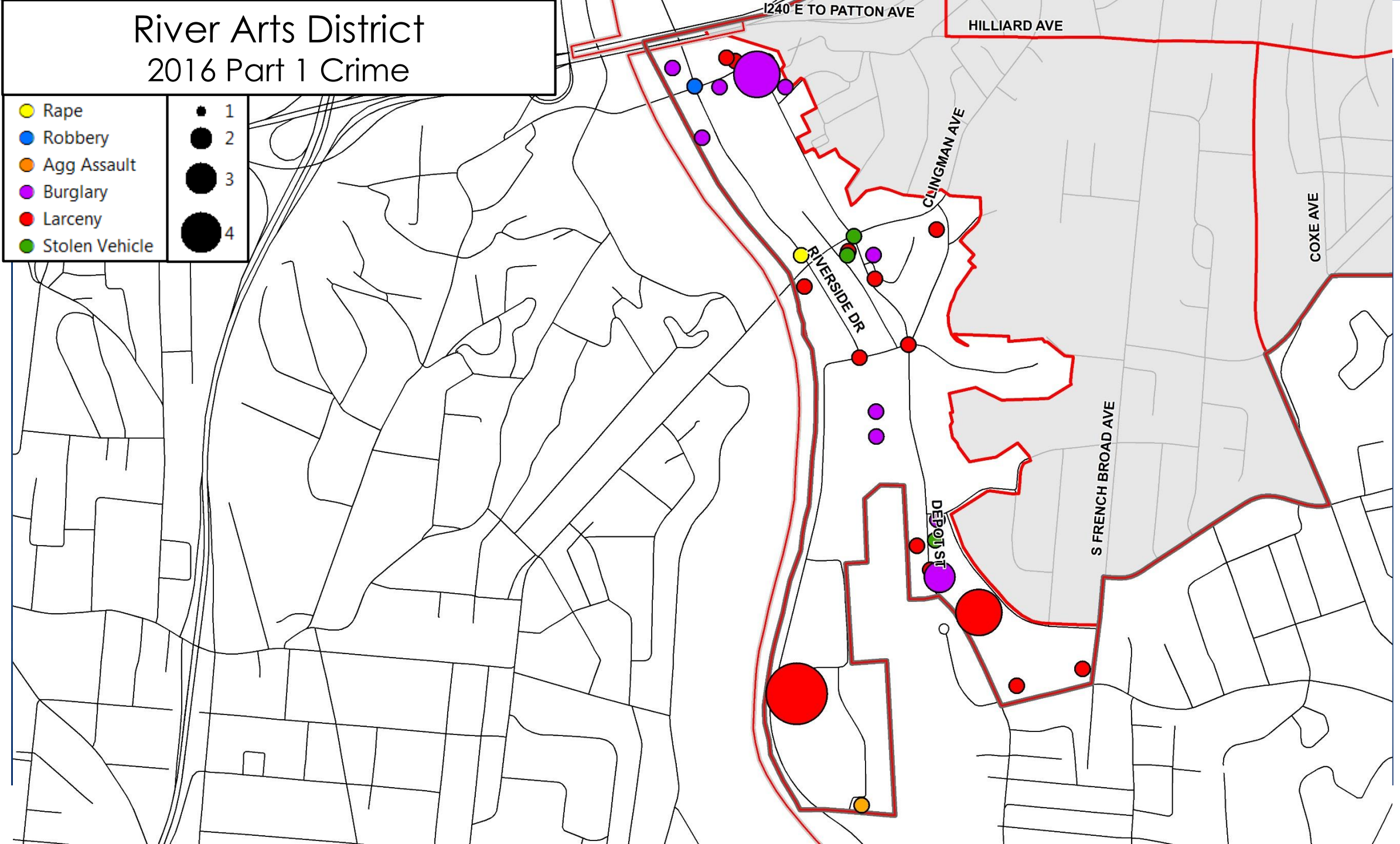
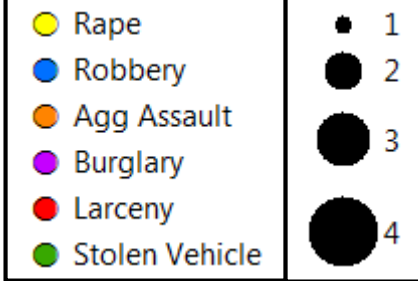
2016

Simple Assault	12
Simple - Domestic	5
Simple - NotDomestic	7
Vandalism	25
Disorderly Conduct	8
Drug Offenses	30
DWI	1
Liquor Law Violation	20
Trespassing	41
Panhandling	2

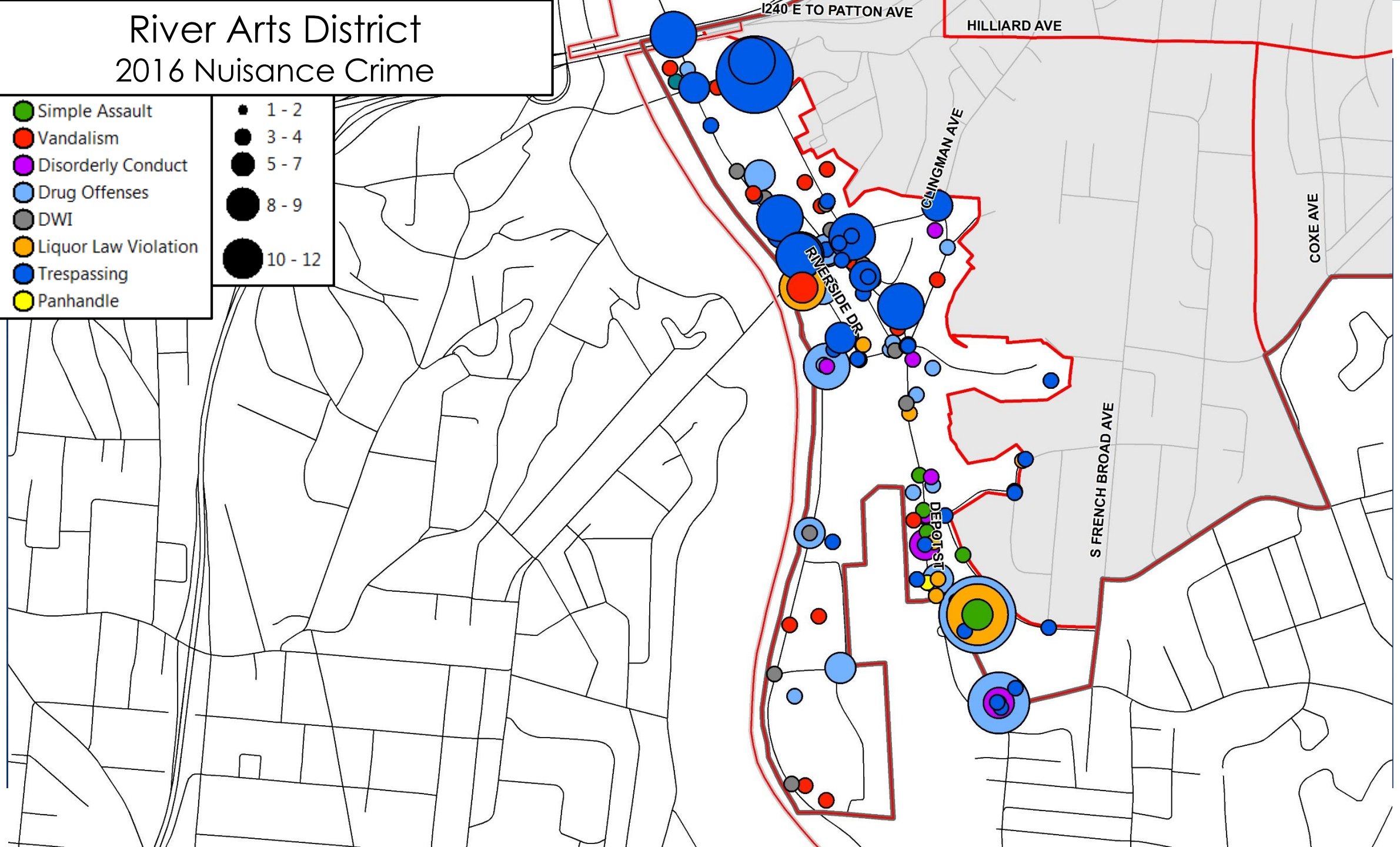
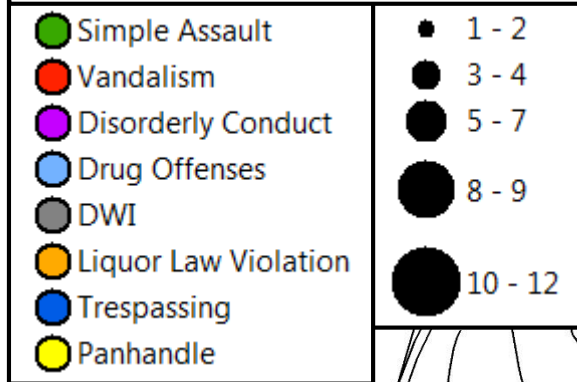
River Arts District 2016 Part 1 Crime



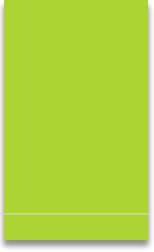
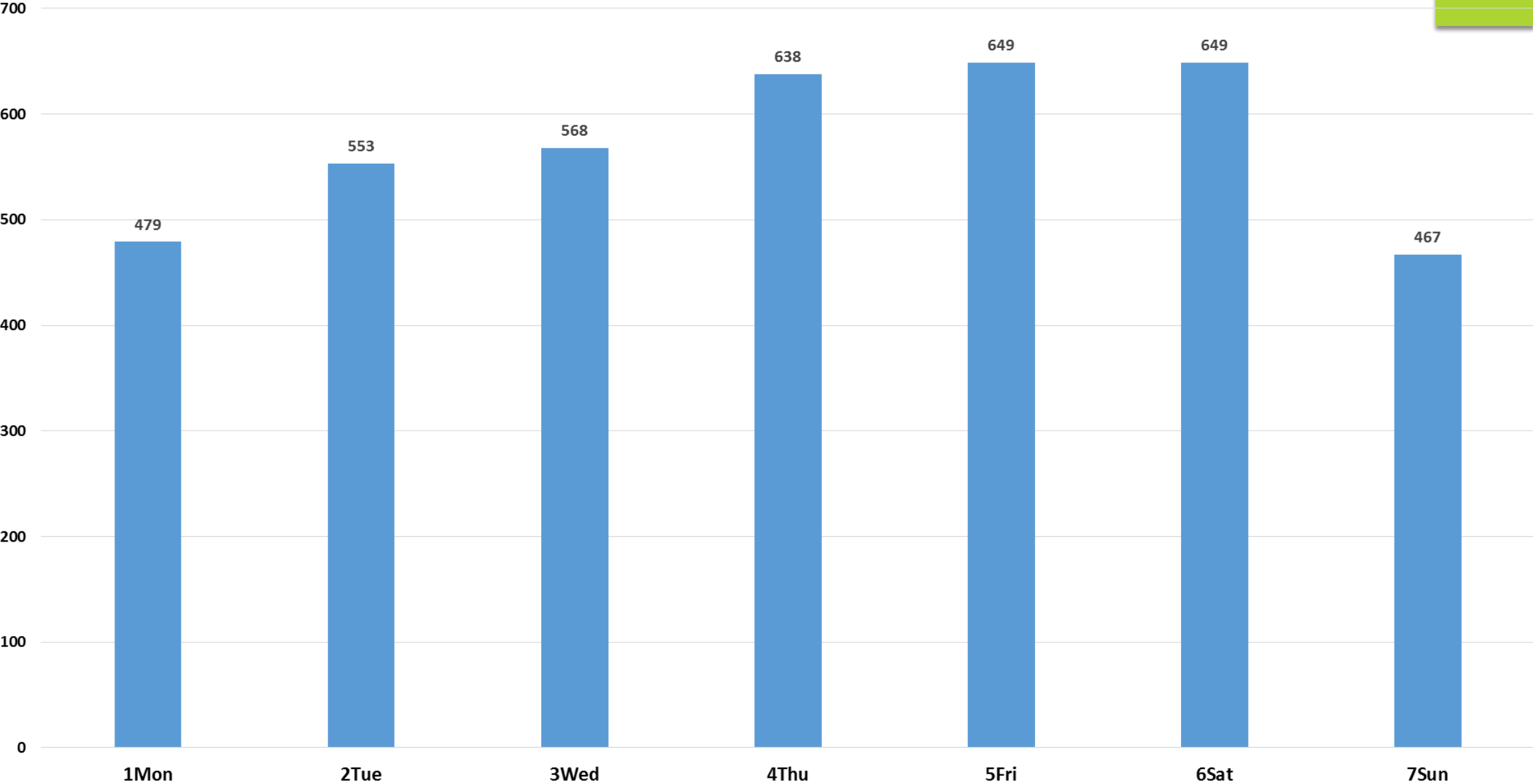
River Arts District 2016 Part 1 Crime



River Arts District 2016 Nuisance Crime



2015 - 2016 Crime by Day - Proposed Downtown District



■ Total

APD Multi-Year Work Plan

- ▶ Who were the victims and offenders of Downtown Part One Crime in 2016?
 - ▶ At least 35% of victims and 17% of offenders are from outside Buncombe County

Residence	Percent of Victims	Percent of Offenders
Asheville/Buncombe	53%	67%
Buncombe County	4%	8%
NC not Buncombe	20%	14%
Out of State	15%	3%
No fixed	1%	9%

APD Multi-Year Work Plan

- ▶ Consequences:
- ▶ No community policing efforts –
 - ▶ foot and bike patrols
 - ▶ citizen contacts, business checks
 - ▶ community engagement and partnerships
- ▶ No traffic enforcement
- ▶ No proactive patrolling or other evidence based proactive crime responses
- ▶ Eventually, limiting the types of calls we respond to at all
- ▶ Ultimate result will mean more crime and more victims of crime

3/29/2017 Colorado Springs police to scale back on house calls

Colorado Springs police to scale back on house calls



By Alan Anderson | Posted: Tue 9:13 PM, Sep 28, 2016 | Updated: Wed 6:12 AM, Sep 21, 2016

COLORADO SPRINGS, Colo. (KXIV) If you call a Colorado Springs police officer, they may not come. Colorado's largest police department is beginning Sunday, reporting a crime in the city will work differently. It's the latest shuffle at the Colo WOB the changes, some crimes that are not actively happening, such as theft, particularly those will other crimes, like if your car gets stolen or broken into and you don't have any suspect information, if your home is broken into, then a community service officer, not a patrol officer, will come to your home. Patrol officers will continue to respond to crimes that are happening right now, where a suspect is in Colorado Springs police Chief Pete Casey addressed the changes Tuesday.

"The amount of time it takes to get to priority one calls for service has been getting high, and we're not getting to our priority one, or emergency calls for service, as quickly as we can, so well as our future, if we get back to a staffing level or we can afford to do that...I would like to get back to it, but Casey said most of the staffing issues have just been part of the natural cycle of employment - off departments - but that CSPD has also been dealt a rough hand over the last couple of years.

"There have been some pretty tough deaths in the community through Planned Parenthood shooting officers' decisions to leave... It's been a difficult year or two at the Colorado Springs Police Department of war and loss on our police officers."

The two 2015 shootings, not less than a month apart, shone a huge spotlight on the importance of factor behind the police department changes.

"An important emergency calls stacked up, in some cases we can find an officer to go immediately, hard to find them, it's a big deal to have cover officers...there are times when you don't want to send someone out for a long time.

"We've had some pretty big events in our community that we stepped up and handled well, but when officers and their families and safety as well as their family members worrying about them, I think some officers back out in the patrol division...we'll get this figured out."

FULL LIST OF CHANGES BY COLORADO SPRINGS POLICE
<http://www.ksbn.com/content/news/Colorado-Springs-police-to-scale-back-on-house-calls-304>

3/29/2017 Pittsburgh police chief pares types of incidents officers will respond to | TRIBUNE

TRIBUNE LIVE
[HTTP://TRIBLIVE.COM/304ME](http://triblive.com)

Start your day off right. **Subscribe today!** [Click Here](#)

NEWS ([HTTP://TRIBLIVE.COM/NEWS/](http://triblive.com/news/)) [PRINTER-FRIENDLY | TRUE](#)

Pittsburgh police chief pares types of incidents officers will respond to

news@tribweb.com?

IF TYPES TYPES OF INCIDENTS OFFICERS WILL RESPOND TO 3/16, 11:50 p.m.

SENTRY DAVIS | TRIBUNE REVIEW

department's Telephone Reporting Unit, staffed patrol.

Sorry, but for this type of routine call, we're not.

Such as criminal mischief or non-reportable incidents dated Aug. 25, added offenses such as simple entry to phone banks, which drew criticism from not, and you're going to let civilians make that decision. "I think you're walking down a very

3/29/2017 Chicago Police No Longer Respond To Lesser Crimes - News - POLICE Magazine

PLEASE ASK YOUR FRIENDS TO HELP US REACH 100,000 FANS! [POLICE](#)

POLICE PATROL

Home | Video | Guides | SWAT | Weapons | Careers & Training | Patrol | Technology | Vehicles | Women in LE | Directory

Featured Articles | Products | News | Blog | Photo Galleries | Book Fairs

Top News
Chicago Police No Longer Respond To Lesser Crimes

February 04, 2013 | Tweet | G+ | St | Share



Photo: Paul Clifton

To free up additional patrol officers, Chicago Police Superintendent Garry McCarthy has instructed officers not to respond to lesser crimes such as vehicle theft, garage burglary, or crime where the offender is no longer at the scene.

The move will free up 44 officers per day to respond to more serious offenses. The 911 calls are being transferred to the Chicago PD's Alternate Response Section, staffed by officers on light duty. Police reports will be taken over the phone. If necessary, evidence technicians will be assigned later, reports the *Chicago Sun-Times*.

The Chicago Police Department is also in the midst of transferring 200 officers to patrol from administrative duties to stem the city's violence by the end of March. In January, the city recorded 43 murders, including 15-year-old band major Jettie Hadjiya Pendleton.

The department will use the additional officers to saturate areas where trouble is brewing, reports the *Chicago Tribune*.

Tags: [Chicago PD](#) | [Patrol Resources](#) | [911 Calls](#) | [Dispatchers](#)

<http://www.policemag.com/content/news/2013/02/04/chicago-police-no-longer-respond-to-lesser-crimes.aspx>