

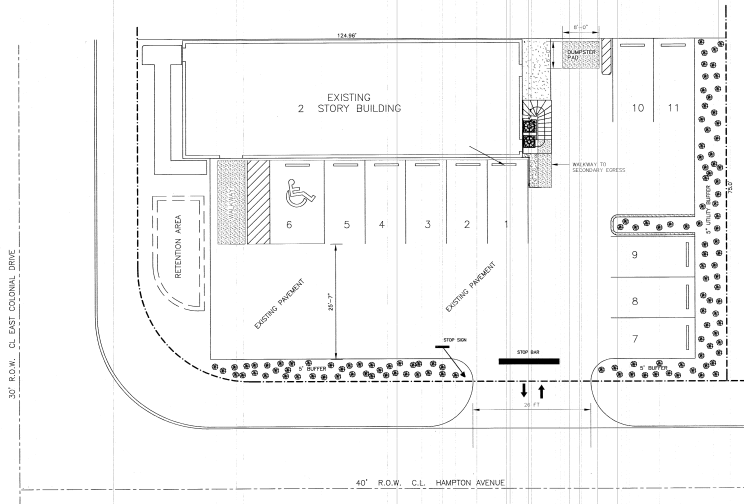
REVISIONS  
6-14-05

W BARNETT ENTERPRISES, INC.  
CONSULTANT ENGINEER  
PO BOX 875  
TAMPA, FLORIDA 33601  
WFLA LICENSE # PE 285576

STAIRWAY  
1921 COLONIAL DRIVE  
ORLANDO, FLORIDA

DATE  
06-14-05

SHEET  
SITE  
1 OF 1



SITE DATA	
LOT SQUARE FOOTAGE	9372 SQFT
LOT ACERAGE	0.215 AC
BUILDING SQUARE FOOTAGE	
- FIRST FLOOR	1875 SQFT
- SECOND FLOOR	1875 SQFT

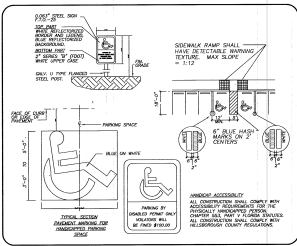
TOTAL PARKING: 11 SPACES  
 TOTAL HANDICAP : 1 SPACE  
 PARKING STALL 18.0 FT X 8.5 FT

NOTE: LANDSCAPE IRRIGATION IS EXISTING

LOT DIMENSIONS:  
 W-124.96', E-124.96', N-75.0', S-75.0'

LANDSCAPE CRITERIA

1. ALL LANDSCAPE AREAS WILL BE IRRIGATED IN ACCORDANCE SECTION 60.232(e) ORLANDO LAND DEVELOPMENT CODE.



30 VIBURNUM SPP. HAW 3 GAL CANT. 24" HEIGHT MIN.  
 LOCATION TO BE DETERMINED BY LANDSCAPE CONTRACTOR AT TIME OF PLACEMENT.

SCALE: 1"=10'

REVISIONS
6-10-05

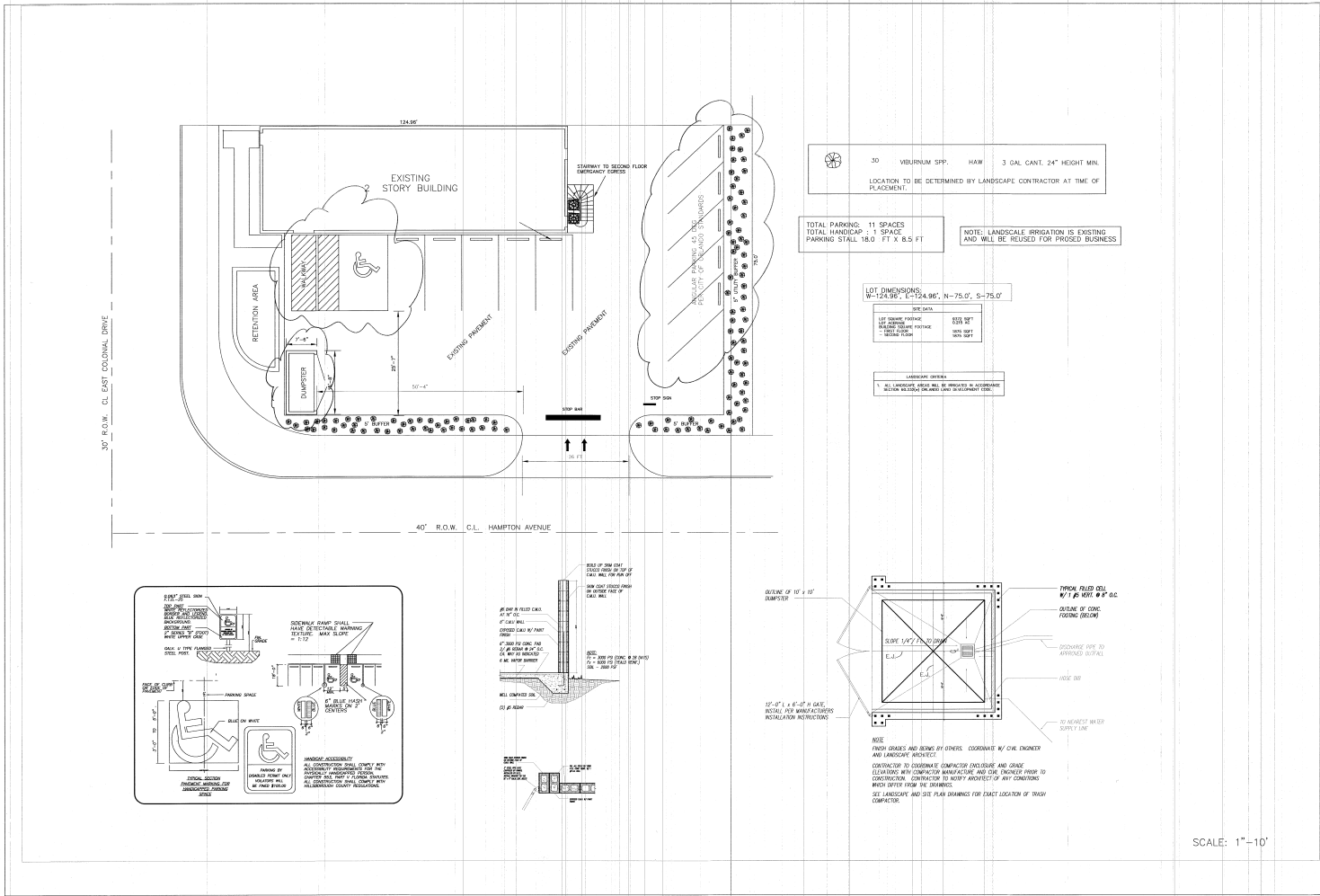
W BARNETT ENTERPRISES, INC.  
 CONSULTANT ENGINEER  
 PO BOX 875  
 TAMPA, FLORIDA 33601

W BARNETT, P.E.  
 PE# 28576

STAIRWAY  
 1921 COLONIAL DRIVE  
 ORLANDO, FLORIDA

DATE  
 03-03-05

SHEET  
 SITE  
 1 OF 1



 30' VIBRUM S.P.C.    HAWK    3 GAL. CAPT. 24" HEIGHT MIN.  
 LOCATION TO BE DETERMINED BY LANDSCAPE CONTRACTOR AT TIME OF PLACEMENT.

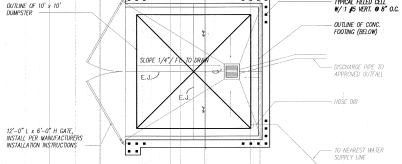
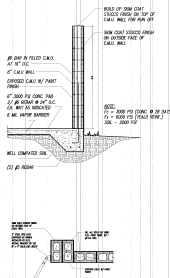
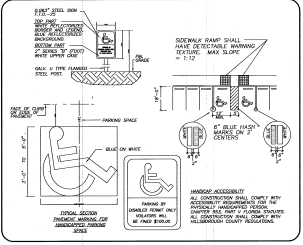
TOTAL PARKING: 11 SPACES  
 TOTAL HANDICAP: 1 SPACE  
 PARKING STALL 16.0 FT X 8.5 FT

NOTE: LANDSCAPE IRRIGATION IS EXISTING AND WILL BE REUSED FOR PROPOSED BUSINESS.

LOT DIMENSIONS:  
 W-124.96', E-124.96', N-75.0', S-75.0'

NO.	DESCRIPTION	DATE
1	ISSUE FOR PERMIT	03/11/17
2	REVISION	03/11/17
3	REVISION	03/11/17

LANDSCAPE DETAILS  
 1. ALL LANDSCAPE PLANTING SHALL BE SPECIFIED AS ACCORDING TO THE LATEST EDITION OF THE FLORIDA LANDSCAPE CONTRACTORS' MANUAL.



NOTE:  
 FROM GRADES AND BEING BY OTHERS. COORDINATE W/ CIVIL ENGINEER AND LANDSCAPE ARCHITECT.  
 CONTRIBUTOR TO DETERMINE COMPACTOR DIMENSIONS AND GRADE ELEVATIONS WITH CONTRACTOR MANUFACTURE AND CIVIL ENGINEER PRIOR TO CONSTRUCTION. CONTRIBUTOR TO VERIFY AND VERIFY OF ANY CONDITIONS WHICH DIFFER FROM THE DRAWINGS.  
 SEE LANDSCAPE AND TREE PLAN DRAWINGS FOR EXACT LOCATION OF TRASH DUMPSTER.

REVISIONS

1	ISSUE FOR PERMIT	03/11/17
2	REVISION	03/11/17
3	REVISION	03/11/17

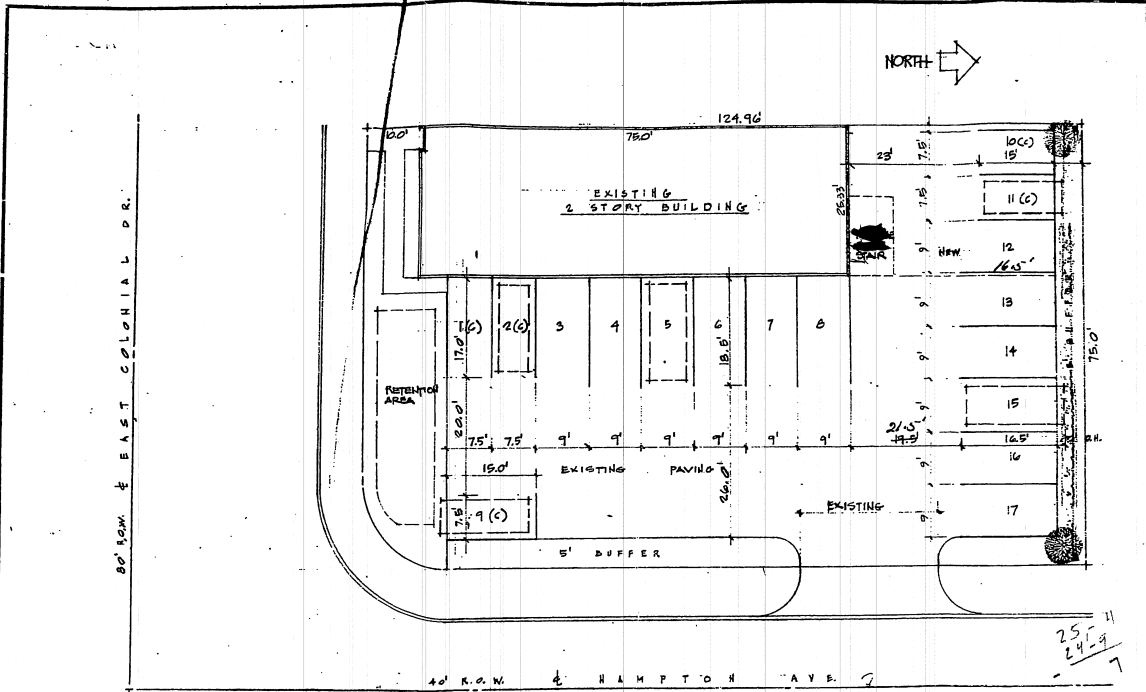
**W BARNETT ENTERPRISES, INC.**  
 CONSULTANT ENGINEER  
 PO BOX 875  
 TAMPA, FLORIDA 33601  
 WTB BARNETT, P.E.  
 REG # 28576

**STAIRWAY**  
**1921 COLONIAL DRIVE**  
**ORLANDO, FLORIDA**

DATE  
 03-03-05

SHEET  
**SITE**  
 1 OF 1

SCALE: 1"=10'



PROPOSED PARKING LAYOUT ~ 1921 E. COLONIAL DR.

REVISIONS	BY

**JAMES C. LUCIA, INC.**  
 Licensed Professional Engineer  
 Licensed Professional Planner  
 1100 5th Street  
 (407) 582-3928  
 114 Whippoorwill Loop, Altamonte Springs, FL 32714

PROPOSED PARKING LAYOUT FOR:  
**MR. M. JAIN**  
 ORLANDO, FL.

Date: 1-18-04  
 Scale: 1/8" = 1'-0"  
 Drawn: JCL  
 Check: JCL  
 Title:  

**BUILDING INSPECTION**

THESE PLANS NOT APPROVED  
ELECTRICAL CONTRACTOR MUST  
SUBMIT PLANS FOR APPROVAL  
AND PERMIT

THESE PLANS NOT APPROVED  
MECHANICAL CONTRACTOR  
MUST SUBMIT PLANS FOR  
APPROVAL AND PERMIT

**PARKING ANALYSIS:**

- 5 CONTACT SPACES
- 12 REGULAR SPACES

THESE PLANS NOT APPROVED  
PLUMBING CONTRACTOR MUST  
SUBMIT PLANS FOR APPROVAL  
AND PERMIT

INTERIOR FINISH MATERIALS MUST CONFORM  
TO SECTION 704 S.B.C.

All Prestations of Required Fire  
Rated Ceilings And Walls Must Be  
Protected With Approved Accessories

Convert 2nd floor to an  
office

SEE SEC. 68.116 ORLANDO CITY  
CODE FOR REQUIREMENTS AND  
DETAILS FOR LANDSCAPING  
VEHICLE USE AREAS.

DECORATIVE TREES MAY BE SUB-  
STITUTED FOR US TO A MAXIMUM  
OF 50% OF THE N.E. 5' HIGH.  
TREES SHALL BE REPLACED FOR  
EACH SPACE THE REPLACED.

1-25-11  
1-24-07  
1-27-06  
C-1

