

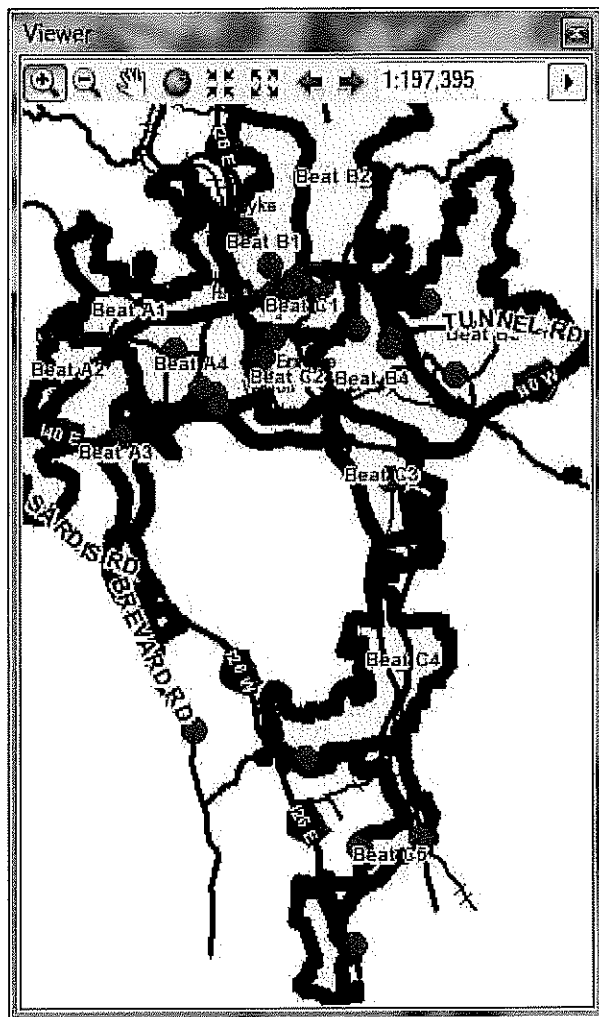
RepDate	OffenseCat	casenum1	address1	happened	Beat	(blank)	Suspended	Open	Grand Total	
Mon 04/20/15	GraffitiNotGang	15009453	53 SWANNANOA RIVER RD/CALEDONIA RD	Occur time spans 4days 15minutes from Thu 4/16 6:00PM to Mon 4/20 6:15PM	Baker4			1	1	
		15009426	STAR LANES BOWLING CTR/ 491 KENILWORTH RD	Occur time spans 2days 20hours from Fri 4/17 4:00PM to Mon 4/20 12:00PM	Baker4			1	1	
		15009450	1 BEAUCATCHER RD/COLLEGE ST	Occurred On Mon 4/20 5:38PM	Baker4			1	1	
Tue 04/21/15	GraffitiNotGang	15009559	1636 HENDERSONVILLE RD	Occurred Between Wed 4/1 1:00PM and Wed 5:00PM Span of 4hours	Charlie4			1	1	
Wed 04/22/15	GraffitiNotGang	15009648	RIVER LINK INC/ 170 LYMAN ST	Occur time spans 6days 23hours 1minutes from Wed 4/15 12:00PM to Wed 4/22 11:01AM	Charlie2			1	1	
		15009630	AND GRANITE LLC/ 44 BUCK SHOALS RD. AT ST D1	Occurred On Mon 4/20 8:00AM	NoBeat APD			1	1	
		15009739	WALMART PARK/ 100 BLEACHERY BLVD	Occurred On Wed 4/22 2:53PM	Baker3			1	1	
		15009638	186 PATTON AVE	8:58AM	Charlie1		1		1	
		15009639	ECHO MOUNTAIN RECORDING/ 175 PATTON AVE	Occurred On Wed 4/22 8:57AM	Charlie1			1	1	
		15009643	FREDS SPEAKEASY/ 122 COLLEGE ST	Occurred On Wed 4/22 9:29AM	Charlie1			1	1	
Thu 04/23/15	GraffitiNotGang	15009805	146 ROBERTS ST	21hours 40minutes from Fri 4/17 5:00PM to Thu 4/23 2:40PM	Charlie1			1	1	
Fri 04/24/15	GraffitiNotGang	15009888	CAPTAINS BOOKSHELF/ 31 PAGE AVE	Occurred Between Fri 4/17 12:00AM and Fri 12:00PM Span of 12hours	Charlie1			1	1	
Mon 04/27/15	GraffitiNotGang	15010183	LUKE ATKINSON WAREHOUSE/ 717 HAYWOOD RD	Occurred Between Mon 4/27 12:00AM and Mon 12:03PM Span of 12hours 3minutes	Adam4		1		1	
Tue 04/28/15	GraffitiNotGang	15010280	HIP REPLACEMENT/ 72 N LEXINGTON AVE	Occurred Between Tue 4/28 12:00AM and Tue 10:00AM Span of 10hours	Charlie1	1			1	
Grand Total							1	2	11	14

Day of Week / Time of Day.

...8 of the 14 incidents, or 57%, had found/secure times within 12 hours.

Hour Range	1Mon	2Tue	3Wed	4Thu	5Fri	6Sat	7Sun	ByHour
00:00-03:00	0%	2%	0%	0%	0%	0%	0%	2%
03:00-06:00	0%	2%	0%	0%	0%	0%	0%	2%
06:00-09:00	9%	2%	22%	0%	0%	0%	0%	33%
09:00-12:00	0%	1%	11%	0%	0%	0%	0%	12%
12:00-15:00	0%	0%	26%	0%	0%	0%	0%	26%
15:00-18:00	9%	0%	15%	0%	0%	0%	0%	24%
18:00-21:00	0%	0%	0%	0%	0%	0%	0%	0%
21:00-24:00	0%	0%	0%	0%	0%	0%	0%	0%
ByDay	18%	8%	75%	0%	0%	0%	0%	100%

- Citywide. 21 Vandalism during week from Mon 4/20 to Sun 4/26 (average is 12.5 per week).
 - See 1321_03_List and Map files in supplement bulletin for detail.
 - 6 of these reported Sun 4/26



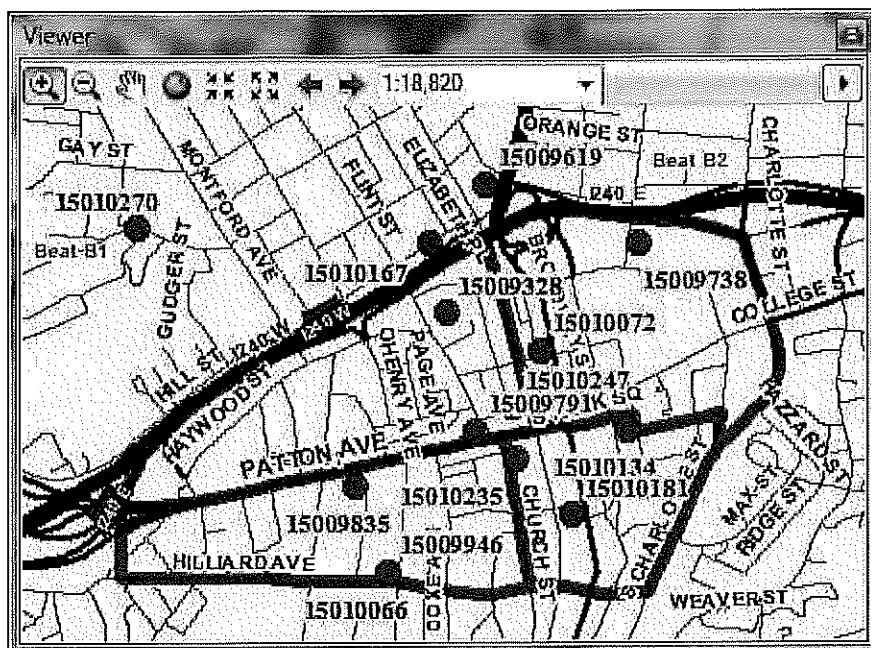
Day of Week / Time of Day.

...21 of the 27 incidents, or 78%, had found/secure times within 12 hours.

Hour Range	1Mon	2Tue	3Wed	4Thu	5Fri	6Sat	7Sun	ByHour
00:00-03:00	0%	1%	0%	0%	2%	11%	4%	18%
03:00-06:00	0%	2%	0%	0%	0%	14%	6%	21%
06:00-09:00	0%	3%	0%	0%	0%	9%	5%	18%
09:00-12:00	0%	1%	0%	0%	0%	0%	4%	5%
12:00-15:00	0%	0%	0%	0%	2%	3%	0%	6%
15:00-18:00	0%	1%	0%	0%	0%	0%	4%	5%
18:00-21:00	2%	0%	0%	5%	0%	0%	3%	10%
21:00-24:00	0%	0%	9%	0%	0%	7%	0%	16%
ByDay	2%	8%	9%	5%	5%	44%	28%	100%

- **Downtown**

- 8 Larceny incidents during week from Mon 4/20 to Sun 4/26 (average is 3.1 per week).
 - In addition, 4 so far in current week – reported Mon 4/27 - which is high for one day, and a handful in shallow north.
 - See 1321_06_Map.kmz of supplement bulletin for additional detail.



RepDate	OffenseCat	casenum1	address1	happened	Beat	(blank)	Suspended	Closed	Open	Grand Total	
Mon 04/20/15	Larceny	15009328	CENTER/ 87 HAYWOOD ST	Occurred On Sat 4/18 11:00PM	Charlie1			1		1	
Wed 04/22/15	Larceny	15009738	YMCA/ 30 WOODFIN ST	Occurred Between Wed 4/22 4:30PM and Wed 5:30PM Span of 1hours	Charlie1				1	1	
		15009619	SHELL STATION/ 40 MERRIMON AVE	Occurred On Wed 4/22 12:18AM	Baker1		1			1	
Thu 04/23/15	Larceny	15009791	PRITCHARD PARK/ 67 PATTON AVE	Occurred On Thu 4/23 12:15PM	Charlie1		1			1	
		15009835	11 GROVE ST	Occurred On Thu 4/23 5:54PM	Charlie1		1			1	
Fri 04/24/15	Larceny	15009946	HOT SPOT/ 79 ASHELAND AVE	Occurred On Fri 4/24 5:05PM	Charlie1		1			1	
Sat 04/25/15	Larceny	15010066	HOT SPOT/ 79 ASHELAND AVE	Occurred On Sat 4/25 9:42PM	Charlie1			1		1	
		15010072	6 WALNUT ST	Occurred Between Sat 4/25 9:00PM and Sat 10:36PM Span of 1hours 36minutes	Charlie1		1			1	
Sun 04/26/15	Larceny	15010134	ASHEVILLE POLICE DEPT/ 100 CHURCH ST	Occurred Between Sun 4/26 3:00PM and Sun 4:00PM Span of 1hours	Charlie1		1			1	
Mon 04/27/15	Larceny	15010181	HOTEL ALOFT/ 51 BILTMORE AVE	Occurred Between Sat 4/25 10:30PM and Sat 11:30PM Span of 1hours	Charlie1		1			1	
		15010167	FOOD LION SKATE PARK/ 36 CHERRY ST N	Occurred Between Sun 4/26 8:30AM and Mon 7:40AM Span of 23hours 10minutes	Baker1		1			1	
		15010247	TABLE RESTAURANT/ 48 COLLEGE ST	Occurred Between Mon 4/27 5:50PM and Mon 11:00PM Span of 5hours 10minutes	Charlie1		1			1	
		15010235	THE LOFTS/ 16 CHURCH ST	Occurred Between Mon 4/27 4:30PM and Mon 6:52PM Span of 2hours 22minutes	Charlie1		1			1	
Tue 04/28/15	Larceny	15010270	60 COURTLAND AVE	Occurred Between Fri 4/24 6:00PM and Fri 10:30PM Span of 4hours 30minutes	Baker1		1			1	
Grand Total							2	9	2	1	14

Day of Week / Time of Day.

...13 of the 14 incidents, or 93%, had found/secure times within 12 hours.

Hour Range	1Mon	2Tue	3Wed	4Thu	5Fri	6Sat	7Sun	ByHour
00:00-03:00	0%	0%	4%	0%	0%	0%	0%	4%
03:00-06:00	0%	0%	0%	0%	0%	0%	0%	0%
06:00-09:00	0%	0%	0%	0%	0%	0%	0%	0%
09:00-12:00	0%	0%	0%	0%	0%	0%	0%	0%
12:00-15:00	0%	0%	0%	6%	0%	0%	0%	6%
15:00-18:00	5%	0%	7%	6%	4%	0%	2%	24%
18:00-21:00	5%	0%	0%	0%	8%	0%	0%	13%
21:00-24:00	2%	0%	0%	0%	5%	45%	0%	53%
ByDay	12%	0%	11%	12%	17%	45%	2%	100%

- Downtown. 4 Graffiti during week from Mon 4/20 to Sun 4/26 (average is 1.5 per week).
 - 3 of these reported Wed 4/22.
 - See Citywide Graffiti section above for detail.
- Downtown. 5 Vandalism during week from Mon 4/20 to Sun 4/26 (average is 2.0 per week).
 - See Citywide Vandalism section above for detail.

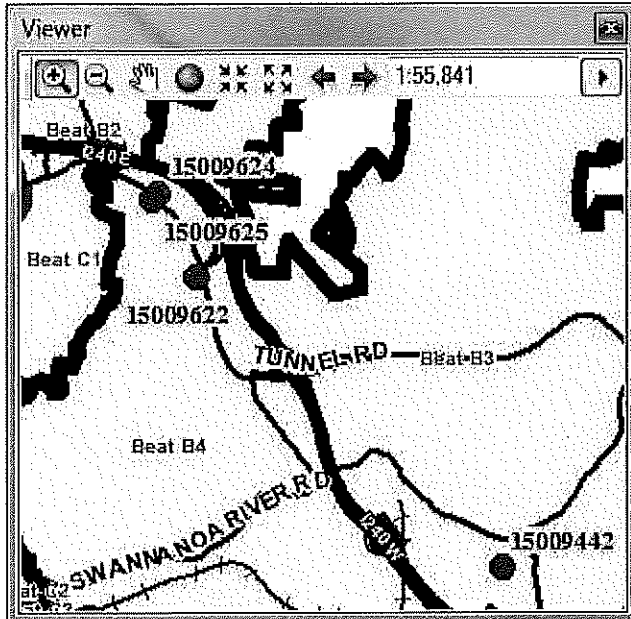
• Public Housing

- Public Housing shows 6 Property Crimes so far in the current week, 3 of which in Pisgah View. Not a spike now, but will be if counts continue at this rate.

RepDate	OffenseCat	casenum1	address1	happened	Beat	(blank)	Grand Total
Mon 04/27/15	BurgResidence	15010244	ASTON PARK GARDEN APARTMENTS/ 165 S FRENCH BROAD AVE	Occurred Between Mon 4/27 3:00PM and Mon 8:00PM Span of 5hours	Charlie1	1	1
	VandalismCar	15010234	D	Occurred On Thu 4/2 6:54PM	Charlie2	1	1
		15010222	PISGAH VIEW APTS/ 1 GRANADA ST	Occurred Between Sun 4/26 9:00PM and Mon 5:39PM Span of 20hours 39minutes	Adam4	1	1
Tue 04/28/15	CarBandE_L	15010288	PISGAH VIEW APTS/ 1 GRANADA ST	Occurred On Tue 4/28 12:57PM	Adam4	1	1
	Vandalism	15010300	296 SHORT MICHIGAN AVE, AT: 3G	Occur time spans 369days 8hours from Thu 4/24 12:00AM to Tue 4/28 8:00AM	Adam4	1	1
	VandalismCar	15010261	BARTLETT ARMS APARTMENTS/ 121 BARTLETT ST	Occurred Between Mon 4/27 6:00PM and Tue 7:00AM Span of 13hours	Charlie2	1	1
Grand Total						6	6

- Adam1 and Adam4
 - No spike activity
- Adam2 and Adam3
 - No spike activity

- Baker1 and Baker2
 - No spike activity
- Baker3 and Baker4
 - [REDACTED] during week from Mon 4/20 to Sun 4/26 (average is 1.0 per week)
 - 3 of these reported Wed 4/22
 - See 1321_04_Map file in supplement bulletin for detail.



RepDate	OffenseCat	casenum1	address1	happened	Beat	Open	Grand Total
Mon 04/20/15	BurgBusiness	15009442	CHINA BUFFET/ 800 FAIRVIEW RD	Occurred Between Sun 4/19 11:00PM and Mon 10:30AM Span of 11hours 30minutes	Baker3	1	1
Wed 04/22/15	BurgBusiness	15009624	DAIRY QUEEN/ 26 TUNNEL RD	Occurred Between Wed 4/22 1:00AM and Wed 2:29AM Span of 1hours 29minutes	Baker4	1	1
		15009625	PAPPA'S & BEER/ 17 TUNNEL RD	Occurred On Wed 4/22 2:36AM	Baker4	1	1
		15009622	RED LOBSTER/ 139 TUNNEL RD	Occurred On Wed 4/22 1:37AM	Baker4	1	1
Grand Total						4	4

Day of Week / Time of Day.

...4 of the 4 incidents, or 100%, had found/secure times within 12 hours.

Hour Range	1Mon	2Tue	3Wed	4Thu	5Fri	6Sat	7Sun	ByHour
00:00-03:00	2%	0%	92%	0%	0%	0%	0%	93%
03:00-06:00	2%	0%	0%	0%	0%	0%	0%	2%
06:00-09:00	2%	0%	0%	0%	0%	0%	0%	2%
09:00-12:00	1%	0%	0%	0%	0%	0%	0%	1%
12:00-15:00	0%	0%	0%	0%	0%	0%	0%	0%
15:00-18:00	0%	0%	0%	0%	0%	0%	0%	0%
18:00-21:00	0%	0%	0%	0%	0%	0%	0%	0%
21:00-24:00	0%	0%	0%	0%	0%	0%	2%	2%
ByDay	6%	0%	92%	0%	0%	0%	2%	100%

- Baker3 and Baker4. [REDACTED] incidents during week from Mon 4/20 to Sun 4/26 (average is 0.5 per week).

- See Citywide Graffiti information above for detail.
- 3 of these incidents were reported Mon 4/20 in Baker4.

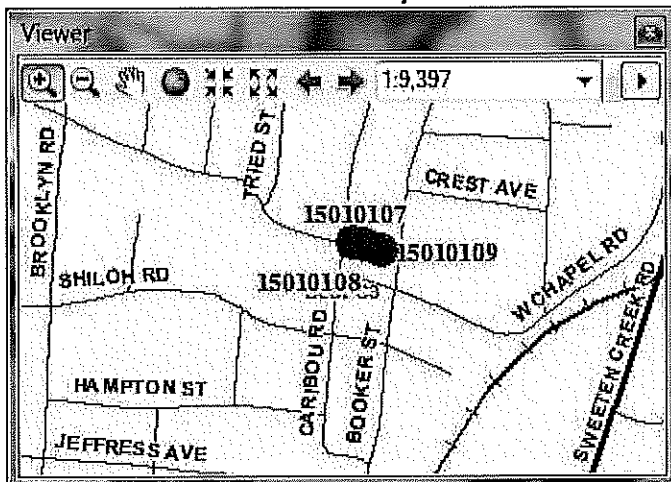
- Charlie1 and Charlie2

- 6 Graffiti incidents during week from Mon 4/20 to Sun 4/26 (average is 2.4 per week).

- [REDACTED] reported Wed 4/22
- See Citywide Graffiti information above for detail.

- Charlie3

- [REDACTED] incidents reported Sun 4/26 (average is 0.1 per day).
- See Citywide Vandalism information above for Google Earth Map.



RepDate	OffenseCat	casenum1	address1	happened	Beat	Open	Grand Total
Sun 04/26/15	Vandalism	15010107	426 CARIBOU RD	Occurred Between Sun 4/26 1:30AM and Sun 11:21AM Span of 9hours 51minutes	Charlie3	1	1
		15010108	424 CARIBOU RD	Occurred Between Sat 4/25 11:45PM and Sun 12:23PM Span of 12hours 38minutes	Charlie3	1	1
	VandalismCar	15010109	15 BOOKER ST	Occurred Between Sat 4/25 11:45PM and Sun 11:21AM Span of 11hours 36minutes	Charlie3	1	1
Grand Total						3	3

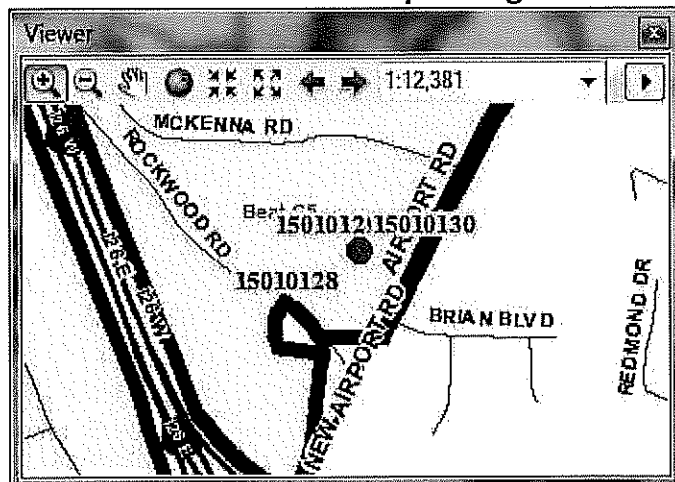
Day of Week / Time of Day.

...2 of the 3 incidents, or 67%, had found/secure times within 12 hours.

Hour Range	1Mon	2Tue	3Wed	4Thu	5Fri	6Sat	7Sun	ByHour
00:00-03:00	0%	0%	0%	0%	0%	0%	18%	18%
03:00-06:00	0%	0%	0%	0%	0%	0%	23%	23%
06:00-09:00	0%	0%	0%	0%	0%	0%	23%	23%
09:00-12:00	0%	0%	0%	0%	0%	0%	23%	23%
12:00-15:00	0%	0%	0%	0%	0%	0%	0%	0%
15:00-18:00	0%	0%	0%	0%	0%	0%	0%	0%
18:00-21:00	0%	0%	0%	0%	0%	0%	0%	0%
21:00-24:00	0%	0%	0%	0%	0%	13%	0%	13%
ByDay	0%	0%	0%	0%	0%	13%	87%	100%

- Charlie4 and Charlie5

- reported on Sun 4/26.
 - See 1321_05_Map.kmz file in supplement bulletin for detail. All three with smashed rear passenger window.



RepDate	OffenseCat	casenum1	address1	happened	Beat	Open	Grand Total
Sun 04/26/15	CarBandE_B	15010130	CHILIS/ 420 AIRPORT RD	Occurred Between Sun 4/26 3:53PM and Sun 6:36PM Span of 2hours 43minutes	Charlie5	1	1
		15010129	CHILIS/ 420 AIRPORT RD	Occurred Between Sun 4/26 3:53PM and Sun 6:14PM Span of 2hours 21minutes	Charlie5	1	1
		15010128	CHILIS/ 420 AIRPORT RD	Occurred On Sun 4/26 3:53PM	Charlie5	1	1
Grand Total							3

Day of Week / Time of Day.

...3 of the 3 incidents, or 100%, had found/secure times within 12 hours.

Hour Range	1Mon	2Tue	3Wed	4Thu	5Fri	6Sat	7Sun	By Hour
00:00-03:00	0%	0%	0%	0%	0%	0%	0%	0%
03:00-06:00	0%	0%	0%	0%	0%	0%	0%	0%
06:00-09:00	0%	0%	0%	0%	0%	0%	0%	0%
09:00-12:00	0%	0%	0%	0%	0%	0%	0%	0%
12:00-15:00	0%	0%	0%	0%	0%	0%	0%	0%
15:00-18:00	0%	0%	0%	0%	0%	0%	78%	78%
18:00-21:00	0%	0%	0%	0%	0%	0%	22%	22%
21:00-24:00	0%	0%	0%	0%	0%	0%	0%	0%
By Day	0%	0%	0%	0%	0%	0%	100%	100%

Ed Eads
 Crime Analyst
 Asheville Police Department
 NC 828 259-5883
eeads@ashevillenc.gov



Think Green! Please do not print this e-mail unless necessary

Confidentiality Notice: This email message, including any attachments, is for the sole use of the intended recipient(s) and may contain confidential and privileged information. Any unauthorized use, disclosure, or distribution is prohibited.

Ben Fulmer


From: eeads@ashevillenc.gov
Sent: Tuesday, April 21, 2015 6:51 PM
To: PoliceDistrictAWestSupervisors@ashevillenc.gov;
PoliceNorth/EastDistrictSupervisors@ashevillenc.gov;
PoliceSouth/CentralDistrictSupervisors@ashevillenc.gov
Cc: SBelcher@ashevillenc.gov; wwood@ashevillenc.gov; sgonce@ashevillenc.gov;
CReeceYoung@ashevillenc.gov; BGriffin@ashevillenc.gov; JStepp@ashevillenc.gov;
sridle@ashevillenc.gov; SHendricks@ashevillenc.gov;
CRIMINVESTSUPV@ashevillenc.gov; dromick@ashevillenc.gov;
kmcculloch@ashevillenc.gov; spruett@ashevillenc.gov; afowler@ashevillenc.gov;
forensics@ashevillenc.gov; PoliceLieutenants@ashevillenc.gov;
KSkonieczny@ashevillenc.gov; TBrigman@ashevillenc.gov; RJustus@ashevillenc.gov;
SDavis@ashevillenc.gov; LLoveface@ashevillenc.gov; CWells@ashevillenc.gov
Subject: Compstat Bulletin 1320
Attachments: Overview_1320.pdf; TwoPlusWeeks_Adam.kmz; TwoPlusWeeks_Baker.kmz;
TwoPlusWeeks_Charlie.kmz

In an effort to streamline the bulletin I've attached a modified Overview pdf file (it now includes Public Housing), and Google Earth maps for the three districts. A separate email will be sent that contains the additional reference files. Comments / suggestions welcomed. There are tentative plans to place reference files into the G-drive.

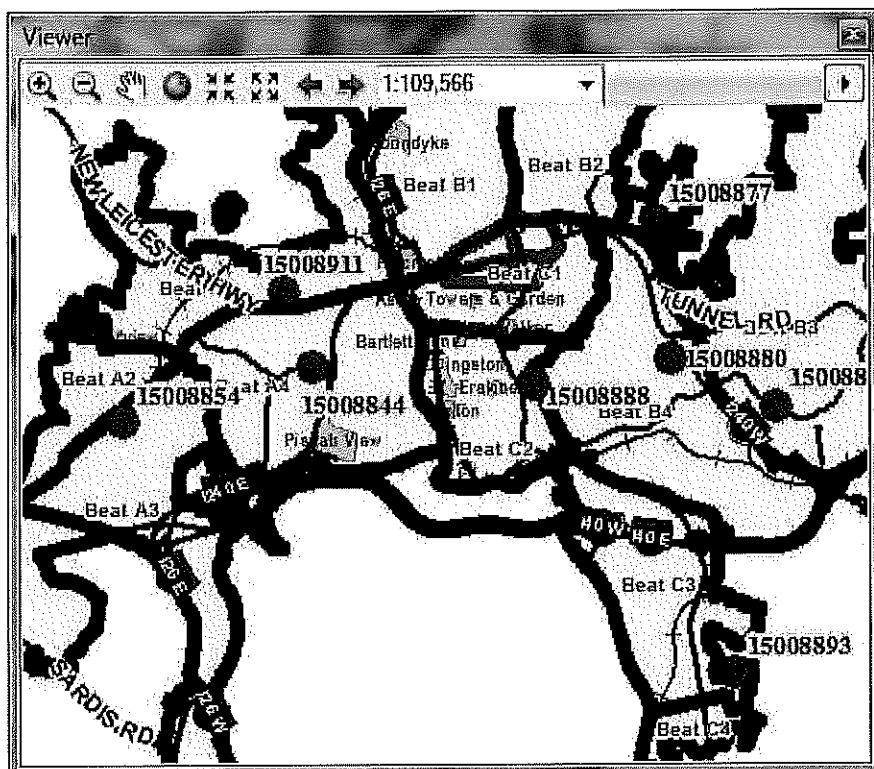
The Overview_1320.pdf file provides a snapshot of activity for all crime types, and marks areas that show an increase in activity. You can quickly see week-to-week progress.

Dates below are when the event was reported unless otherwise noted. Info in this bulletin contains RMS system info as of early Tuesday morning 4/21/15.

	Week #	Mon	Tue	Wed	Thu	Fri	Sat	Sun
Prior Week	1319	4/6	4/7	4/8	4/9	4/10	4/11	4/12
Recent Week	1320	4/13	4/14	4/15	4/16	4/17	4/18	4/19
Current Week	1321	4/20	4/21	4/22	4/23	4/24	4/25	4/26

 indicates a spike where at least some of the events, based on counts, are quite likely to be related. Other listed events indicate above average activity.

- Citywide
 - Citywide. 8 Larceny on Tue 4/14 (average is 3.4 per day).



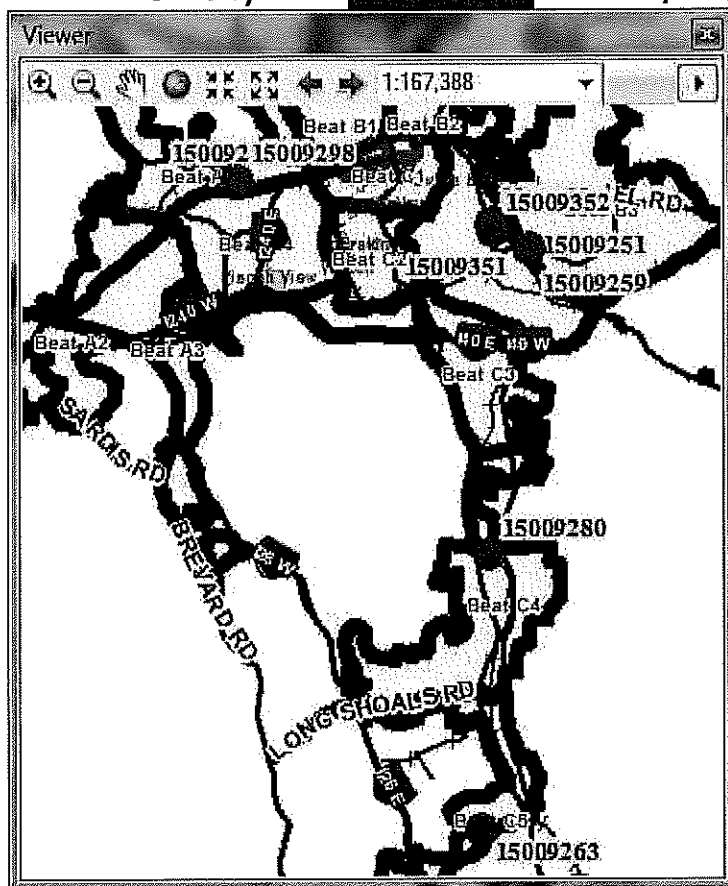
RepDate	OffenseCat	casenum1	address1	happened	Beat	Suspended	Closed	Open	Grand Total
Tue 04/14/15	Larceny	15008877	SOCIAL SECURITY ADMINISTRATION/ 800 CENTREPARK DR	Occurred Between Tue 4/14 10:00AM and Tue 10:30AM Span of 30minutes	Baker3			1	1
		15008880	KAY JEWELERS/ 3 S TUNNEL RD	Occurred On Tue 4/14 4:49PM	Baker4			1	1
		15008810	TREASURE CLUB/ 520 SWANNANOA RIVER RD	Occurred On Tue 4/14 12:06AM	Baker3	1			1
		15008893	103 FOREST LAKE DR	Occurred Between Sat 4/11 10:00PM and Sun 6:00AM Span of 8hours	Charlie3			1	1
		15008868	MISSION HOSPITAL/ 509 BILTMORE AVE	Occur time spans 36days 16hours from Sun 3/8 12:00AM to Mon 4/13 4:00PM	Charlie2			1	1
		15008844	THOMAS D FRANKS PA/ 547 HAYWOOD RD	Occurred Between Mon 4/13 5:00PM and Tue 12:35PM Span of 19hours 35minutes	Adam4			1	1
		15008854	GOODWILL INDUSTRIES/ 1616 PATTON AVE	Occurred Between Tue 4/14 12:30PM and Tue 1:30PM Span of 1hours	Adam3			1	1
		15008911	KMART BIG K/ 1001 PATTON AVE	Occurred On Tue 4/14 10:50PM	Adam1		1		1
Grand Total						1	1	6	8

Day of Week / Time of Day.

...6 of the 8 incidents, or 75%, had found/secure times within 12 hours.

Hour Range	1Mon	2Tue	3Wed	4Thu	5Fri	6Sat	7Sun	ByHour
00:00-03:00	0%	12%	0%	0%	0%	0%	8%	21%
03:00-06:00	0%	0%	0%	0%	0%	0%	8%	8%
06:00-09:00	0%	0%	0%	0%	0%	0%	0%	0%
09:00-12:00	0%	12%	0%	0%	0%	0%	0%	12%
12:00-15:00	0%	23%	0%	0%	0%	0%	0%	23%
15:00-18:00	0%	12%	0%	0%	0%	0%	0%	12%
18:00-21:00	0%	0%	0%	0%	0%	0%	0%	0%
21:00-24:00	0%	12%	0%	0%	0%	11%	0%	24%
ByDay	0%	72%	0%	0%	0%	11%	17%	100%

- Citywide. [REDACTED] on Sat 4/18 (average is 3.4 per day).



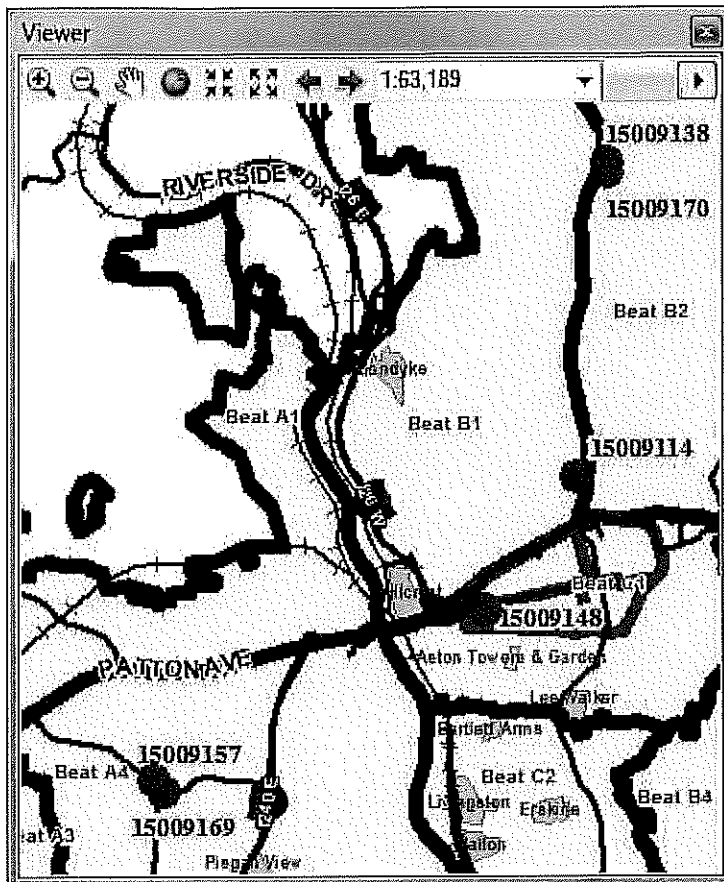
RepDate	OffenseCat	casenum1	address1	happened	Beat	Suspended	Closed	Open	Grand Total
Sat 04/18/15	Shoplifting	15009351	5 S TUNNEL RD	Occurred Between Wed 4/15 1:49PM and Wed 1:51PM Span of 2minutes	Baker4			1	1
		15009272	PACIFIC SUNWEAR/ 3 S TUNNEL RD	Occurred On Fri 4/17 8:30PM	Baker4	1			1
		15009352	5 S TUNNEL RD	Occurred Between Sat 4/18 1:32PM and Sat 1:34PM Span of 2minutes	Baker4			1	1
		15009280	WALMART/ 1636 HENDERSONVILLE RD	Occurred Between Sat 4/18 3:15PM and Sat 3:34PM Span of 19minutes	Charlie4		1		1
		15009298	KMART BIG K/ 1001 PATTON AVE	Occurred On Sat 4/18 8:12PM	Adam1		1		1
		15009289	KMART BIG K/ 1001 PATTON AVE	Occurred On Sat 4/18 6:47PM	Adam1		1		1
		15009259	WALMART SUPERCENTER/ 125 BLEACHERY BLVD	Occurred On Sat 4/18 1:04PM	Baker3		1		1
		15009263	WALMART/ 60 AIRPORT RD	Occurred On Sat 4/18 1:59PM	Charlie5	1			1
		15009251	WALMART SUPERCENTER/ 125 BLEACHERY BLVD	Occurred On Sat 4/18 9:20AM	Baker3		1		1
		Grand Total						2	5

Day of Week / Time of Day.

...9 of the 9 incidents, or 100%, had found/secure times within 12 hours.

Hour Range	1Mon	2Tue	3Wed	4Thu	5Fri	6Sat	7Sun	ByHour
00:00-03:00	0%	0%	0%	0%	0%	0%	0%	0%
03:00-06:00	0%	0%	0%	0%	0%	0%	0%	0%
06:00-09:00	0%	0%	0%	0%	0%	0%	0%	0%
09:00-12:00	0%	0%	0%	0%	0%	12%	0%	12%
12:00-15:00	0%	0%	7%	0%	0%	37%	0%	44%
15:00-18:00	0%	0%	0%	0%	0%	12%	0%	12%
18:00-21:00	0%	0%	0%	0%	7%	25%	0%	32%
21:00-24:00	0%	0%	0%	0%	0%	0%	0%	0%
ByDay	0%	0%	7%	0%	7%	86%	0%	100%

- Citywide. [REDACTED] on Fri 4/17 (average is 1.2 per day).



RepDate	OffenseCat	casenum1	address1	happened	Beat	Closed	Open	Grand Total
Fri 04/17/15	Graffiti/NotGang	15009114	TRADERS JONES/ 81 E CHESTNUT ST	Occurred Between Thu 4/16 9:30PM and Thu 9:38PM Span of 8minutes	Baker1	1		1
		15009138	NORTH ASHEVILLE EXXON/ 873 MERRIMON AVE	Occurred Between Thu 4/16 5:30PM and Fri 8:00AM Span of 14hours 30minutes	Baker2		1	1
		15009148	HUNTER VOLVO/ 252 PATTON AVE	Occurred Between Fri 4/17 3:15AM and Fri 8:00AM Span of 4hours 45minutes	Charlie1		1	1
		15009157	BEAN WERKS/ 753 HAYWOOD RD	Occurred Between Thu 4/16 8:00PM and Fri 7:00AM Span of 11hours	Adam4		1	1
		15009170	WALGREENS/ 841 MERRIMON AVE	Occurred Between Thu 4/16 11:00PM and Fri 9:00AM Span of 10hours	Baker2		1	1
		15009169	728 HAYWOOD RD	Occurred Between Thu 4/16 6:00PM and Fri 1:54PM Span of 19hours 54minutes	Adam4		1	1
Grand Total						1	5	6

Day of Week / Time of Day.

...4 of the 6 incidents, or 67%, had found/secure times within 12 hours.

Hour Range	1Mon	2Tue	3Wed	4Thu	5Fri	6Sat	7Sun	ByHour
00:00-03:00	0%	0%	0%	0%	10%	0%	0%	10%
03:00-06:00	0%	0%	0%	0%	20%	0%	0%	20%
06:00-09:00	0%	0%	0%	0%	13%	0%	0%	13%
09:00-12:00	0%	0%	0%	0%	0%	0%	0%	0%
12:00-15:00	0%	0%	0%	0%	0%	0%	0%	0%
15:00-18:00	0%	0%	0%	0%	0%	0%	0%	0%
18:00-21:00	0%	0%	0%	7%	0%	0%	0%	7%
21:00-24:00	0%	0%	0%	51%	0%	0%	0%	51%
ByDay	0%	0%	0%	57%	43%	0%	0%	100%

- Downtown

- No spike activity

- Public Housing

- 4 Property Crimes in Lee Walker during the week from Mon 4/13 to Sun 4/19 (average is 0.7 per week)

RepDate	OffenseCat	casenum1	address1	happened	Beat	Suspended	Open	Grand Total
Mon 04/13/15	BurgResidence	15008743	LEE WALKER HEIGHTS/ 50 WILBAR AVE. AT: 7A	Occurred On Mon 4/13 9:51AM	Charlie1	1		1
Thu 04/16/15	Vandalism	15009014	LEE WALKER HEIGHTS/ 50 WILBAR AVE. AT: 7G	Occurred Between Wed 4/15 1:00PM and Thu 12:26AM Span of 11hours 26minutes	Charlie1		1	1
Sat 04/18/15	BurgResidence	15009244	LEE WALKER HEIGHTS/ 50 WILBAR AVE. AT: 7A	Occurred On Sat 4/18 5:15AM	Charlie1		1	1
	Vandalism	15009271	LEE WALKER HEIGHTS/ 50 WILBAR AVE. AT: 3B	Occurred Between Sat 4/18 1:00PM and Sat 3:00PM Span of 2hours	Charlie1	1		1
Grand Total						2	2	4

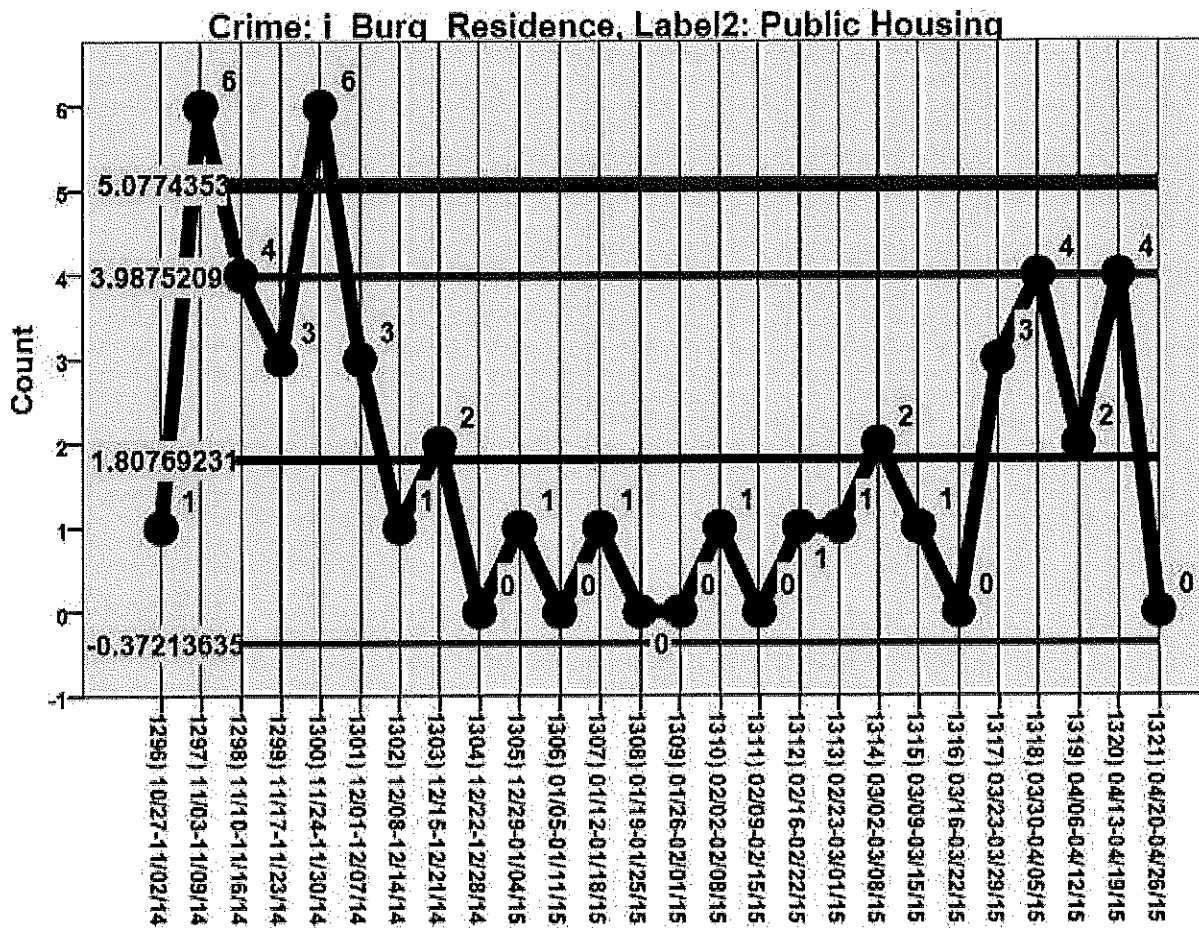
Day of Week / Time of Day.

...4 of the 4 incidents, or 100%, had found/secure times within 12 hours.

Hour Range	1Mon	2Tue	3Wed	4Thu	5Fri	6Sat	7Sun	ByHour
00:00-03:00	0%	0%	0%	6%	0%	0%	0%	6%
03:00-06:00	0%	0%	0%	0%	0%	21%	0%	21%
06:00-09:00	0%	0%	0%	0%	0%	0%	0%	0%
09:00-12:00	21%	0%	0%	0%	0%	0%	0%	21%
12:00-15:00	0%	0%	3%	0%	0%	36%	0%	39%
15:00-18:00	0%	0%	4%	0%	0%	0%	0%	4%
18:00-21:00	0%	0%	4%	0%	0%	0%	0%	4%
21:00-24:00	0%	0%	4%	0%	0%	0%	0%	4%
ByDay	21%	0%	16%	6%	0%	57%	0%	100%

- Public Housing. 4 Residential Burglary during week from 4/13 to 4/19 (average is 1.8 per week)

1. Activity has been above average since 3/23/15 for a total of 13 events
2. See 1320_03_xxx files (report details and google earth map) in supplement bulletin for detail.



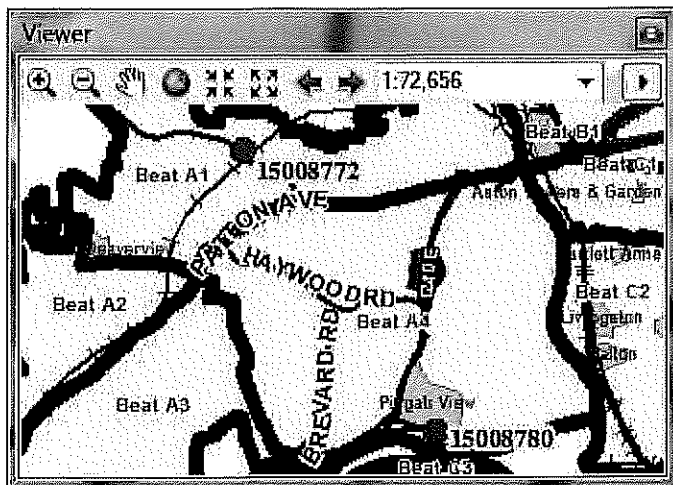
RepDate	OffenseCat	casenum1	address1	happened	Beat	Suspended	Open	Grand Total
Tue 03/24/15	BurgResidence	15006876	60 KLONDYKE AVE	Occurred Between Tue 3/24 10:30AM and Tue 2:30PM Span of 4hours	Baker1		1	1
Sat 03/28/15	BurgResidence	15007222	74 KLONDYKE AVE	Occurred Between Sat 3/28 12:30AM and Sat 12:40AM Span of 10minutes	Baker1		1	1
		15007272	HILLCREST APTS/ 100 ATKINSON ST. AT. 7H	Occurred Between Sat 3/28 2:45PM and Sat 3:00PM Span of 15minutes	Baker1		1	1
Mon 03/30/15	BurgResidence	15007417	152 STEWART ST	Occurred On Mon 3/30 9:23PM	Adam4		1	1
Tue 03/31/15	BurgResidence	15007497	HILLCREST APTS/ 100 ATKINSON ST	Occurred On Tue 3/31 7:47PM	Baker1		1	1
Thu 04/02/15	BurgResidence	15007676	BARTLETT ARMS APARTMENTS/ 121 BARTLETT ST. AT. 415	Occurred Between Thu 4/2 1:00PM and Thu 3:30PM Span of 2hours 30minutes	Charlie2	1		1
Sun 04/05/15	BurgResidence	15007938	ASTON PARK GARDEN APARTMENTS/ 165 S FRENCH BROAD AVE, AT. 5H	Occurred Between Sat 4/4 10:00AM and Sat 11:30PM Span of 13hours 30minutes	Charlie1	1		1
Mon 04/06/15	BurgResidence	15008050	74 KLONDYKE AVE	Occurred On Mon 4/6 10:35PM	Baker1		1	1
Thu 04/09/15	BurgResidence	15008396	BARTLETT ARMS APARTMENTS/ 121 BARTLETT ST. AT. 215	Occurred Between Thu 4/9 12:38PM and Thu 1:15PM Span of 45minutes	Charlie2		1	1
Mon 04/13/15	BurgResidence	15008743	LEE WALKER HEIGHTS/ 50 WILBAR AVE. AT. 7A	Occurred On Mon 4/13 9:51AM	Charlie1	1		1
Wed 04/15/15	BurgResidence	15008960	16 KLONDYKE PL	4:00AM	Baker1		1	1
Fri 04/17/15	BurgResidence	15009146	HILLCREST APTS/ 100 ATKINSON ST	Occurred On Fri 4/17 10:33AM	Baker1		1	1
Sat 04/18/15	BurgResidence	15009244	LEE WALKER HEIGHTS/ 50 WILBAR AVE. AT. 7A	Occurred On Sat 4/18 5:15AM	Charlie1		1	1
Grand Total						3	10	13

Day of Week / Time of Day.

...12 of the 13 incidents, or 92%, had found/secure times within 12 hours.

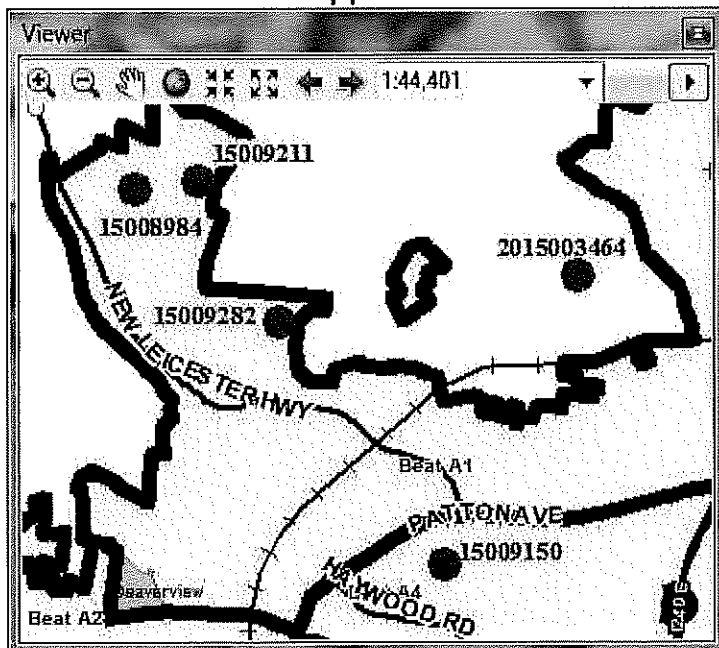
Hour Range	1Mon	2Tue	3Wed	4Thu	5Fri	6Sat	7Sun	ByHour
00:00-03:00	0%	0%	0%	0%	0%	6%	0%	6%
03:00-06:00	0%	0%	6%	0%	0%	6%	0%	12%
06:00-09:00	0%	0%	0%	0%	0%	0%	0%	0%
09:00-12:00	9%	6%	0%	0%	6%	0%	0%	20%
12:00-15:00	0%	8%	0%	21%	0%	6%	0%	35%
15:00-18:00	0%	0%	0%	5%	0%	0%	0%	5%
18:00-21:00	0%	4%	0%	0%	0%	0%	0%	4%
21:00-24:00	18%	0%	0%	0%	0%	0%	0%	18%
ByDay	27%	18%	6%	26%	6%	18%	0%	100%

-
- Adam1 and Adam4
 - 2 Common Law Robbery on Mon 4/13 (average is 0.1 per day).



RepDate	OffenseCat	casenum1	address1	happened	Beat	Open	Grand Total
Mon 04/13/15	RobbComLaw	15008780	CITY OF ASHEVILLE/ 220 AMBOY RD	Occurred On Fri 4/10 4:30PM	Adam4	1	1
		15008772	91 NEW LEICESTER HWY	Occurred Between Mon 4/13 12:03AM and Mon 3:07PM	Adam1	1	1
Grand Total						2	2

- Adam1 and Adam4. [REDACTED] during week from 4/13 to 4/19 (average is 0.3 per week). One other nearby in county.
 1. 3 events reported Fri 4/17 (one of these in county)
 2. See 1320_01_xxx files (report details and google earth map) in supplement bulletin for detail.



RepDate	OffenseCat	casenum1	address1	happened	Beat	Suspended	Open	Grand Total
Wed 04/15/15	StVeh_Moped/Scooter	15008984	WESTMONT COMMONS APARTMENTS/ 500 LANDIS CT	Occur time spans 5113days 18hours 30minutes from Sat 4/14 9:00PM to Wed 4/15 3:30PM	Adam1	1		1
Fri 04/17/15	StVeh_Moped/Scooter	15009150	95 BLUE RIDGE AVE	15hours 30minutes from Thu 4/2 4:00PM to Thu 4/16 7:30AM	Adam4		1	1
		2015003464	10 WREN LN	Occurred Between Thu 4/16 6:00PM and Thu 8:00PM Span of 2hours	InCounty		1	1
		15009211	402 WIND RIDGE ST	Occurred Between Fri 4/17 12:30AM and Fri 8:00AM Span of 7hours 30minutes	Adam1		1	1
Sat 04/18/15	StVeh_Moped/Scooter	15009282	MEADOWS APARTMENTS/ 99 ASCENSION DR, AT 13G	Occur time spans 1days 16hours 45minutes from Thu 4/16 11:00PM to Sat 4/18 3:45PM	Adam1	1		1
Grand Total						2	3	5

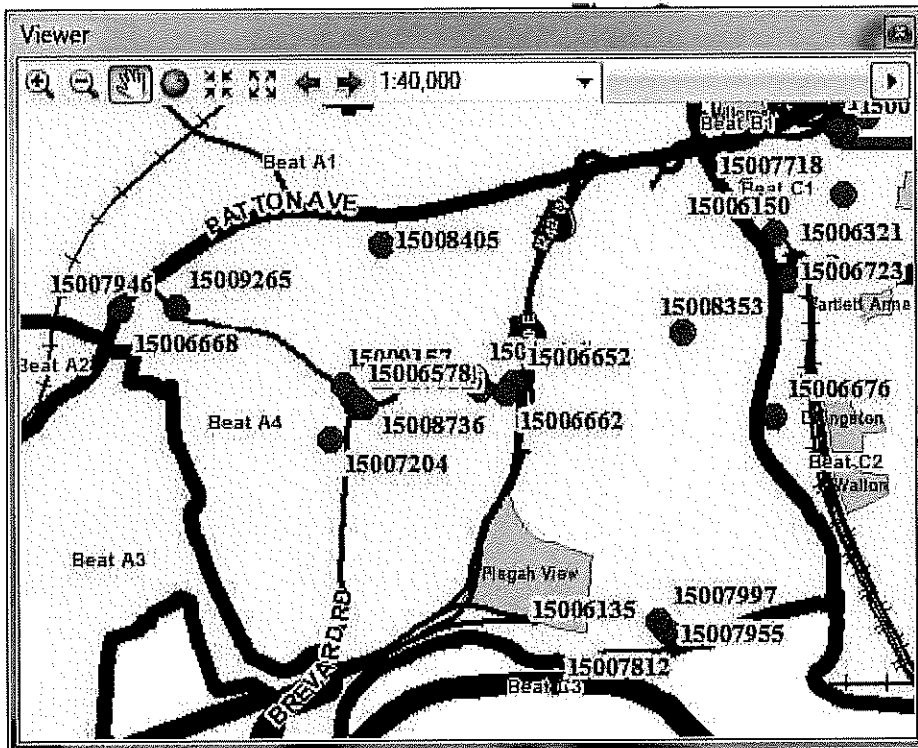
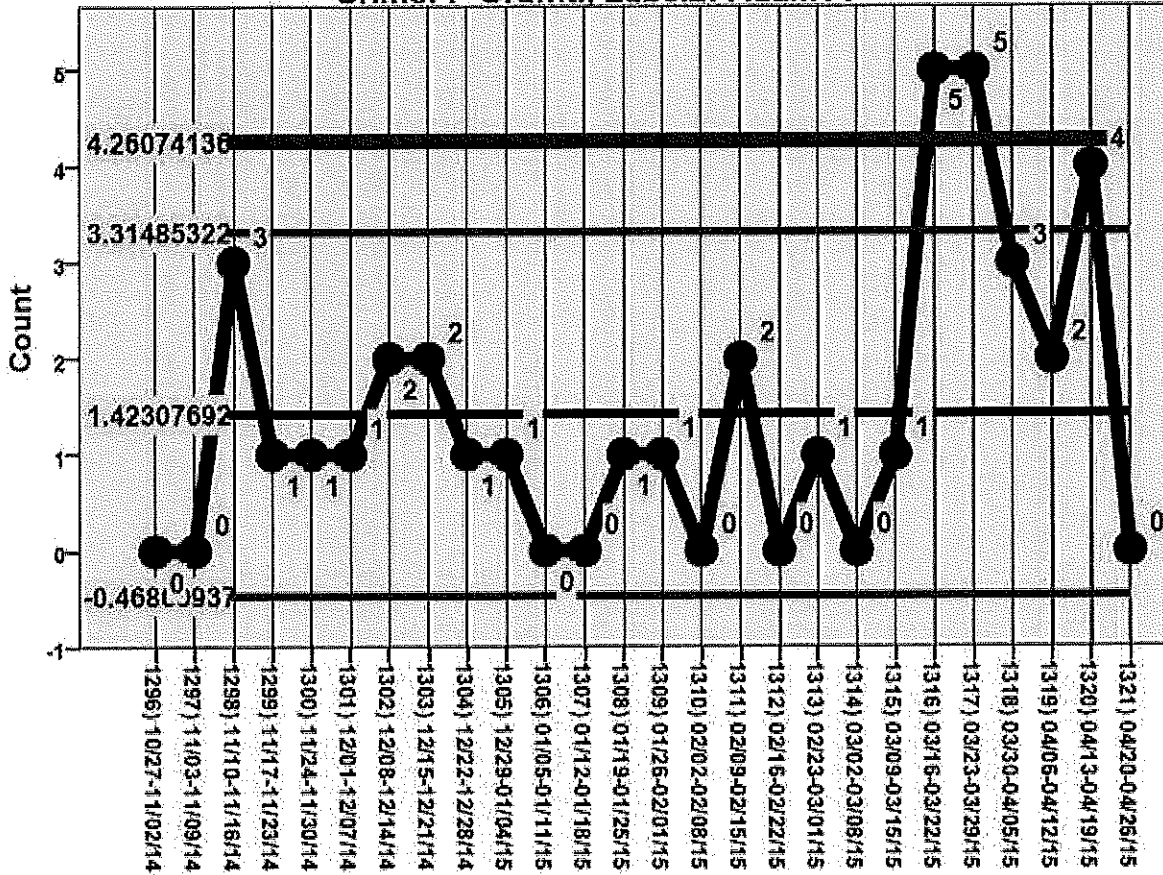
Day of Week / Time of Day.

...2 of the 5 incidents, or 40%, had found/secure times within 12 hours.

Hour Range	1Mon	2Tue	3Wed	4Thu	5Fri	6Sat	7Sun	ByHour
00:00-03:00	0%	0%	0%	0%	16%	0%	0%	16%
03:00-06:00	0%	0%	0%	0%	16%	0%	0%	16%
06:00-09:00	0%	0%	0%	0%	11%	0%	0%	11%
09:00-12:00	0%	0%	0%	0%	0%	0%	0%	0%
12:00-15:00	0%	0%	0%	0%	0%	0%	0%	0%
15:00-18:00	0%	0%	0%	0%	0%	0%	0%	0%
18:00-21:00	0%	0%	0%	57%	0%	0%	0%	57%
21:00-24:00	0%	0%	0%	0%	0%	0%	0%	0%
ByDay	0%	0%	0%	57%	43%	0%	0%	100%

- Adam1 and Adam4. 4 Graffiti during week from 4/13 to 4/19 (average is 1.4 per week).
 1. This may be a continuation of elevated activity that began 3/16
 2. Clusters along Haywood Rd
 3. See 1320_02_xxx files (report details and google earth map) in supplement bulletin for detail.

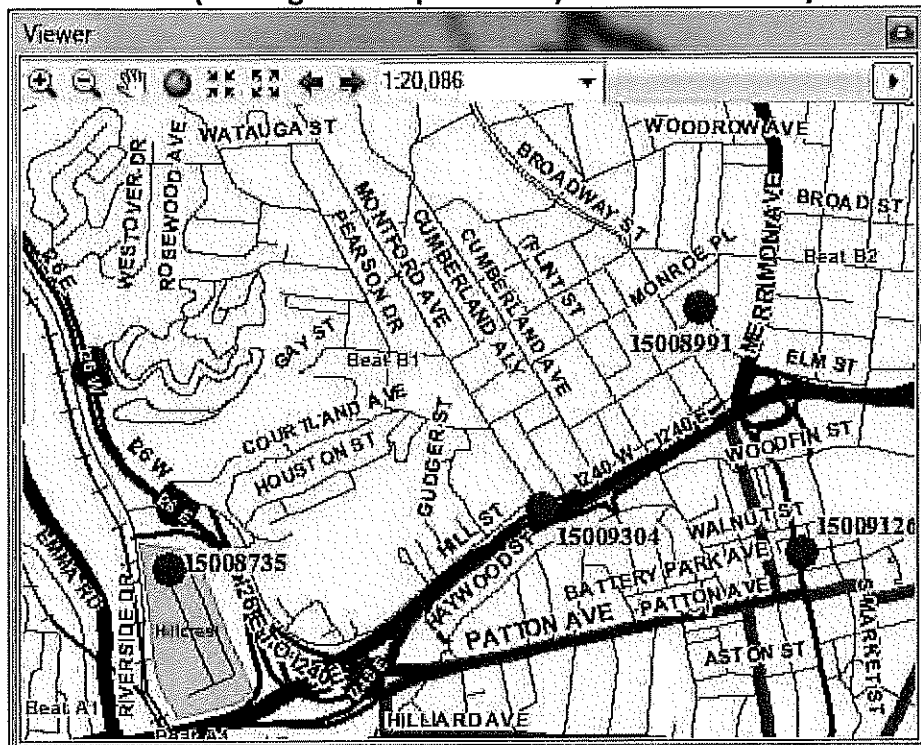
Crime: r Graffiti, Label2: Adam14



RepDate	OffenseCat	casenum1	address1	happened	Beat	Suspended	Open	Grand Total
Mon 03/16/15	GraffitiNotGang	15006135	VACANT/ 235 AMBOY RD	Occur time spans 1days 11hours 10minutes from Sun 3/16 12:00AM to Mon 3/16 11:10AM	Adam4	1		1
Sat 03/21/15	GraffitiNotGang	15006584	LUKE ATKINSON WAREHOUSE/ 728 HAYWOOD RD	Occurred Between Sat 3/21 1:30AM and Sat 12:49PM Span of 11hours 19minutes	Adam4	1		1
	GraffitiNotGangCar	15006578	JAMES I WHITAKER MOVING AND HAULING/ 732 HAYWOOD RD	Occurred Between Sat 3/21 1:30AM and Sat 11:14AM Span of 9hours 44minutes	Adam4	1		1
Sun 03/22/15	GraffitiNotGang	15006668	HAPPY HILL RESTAURANT/ 1400 PATTON AVE	Occurred Between Sat 3/21 10:00PM and Sun 8:00AM Span of 10hours	Adam4	1		1
		15006662	DAGGITS PAWN SHOP/ 476 HAYWOOD RD	Occurred Between Sat 3/21 10:00PM and Sun 3:27AM Span of 5hours 27minutes	Adam4	1		1
		15006652	ONE STOP/ 495 HAYWOOD RD	Occurred On Sun 3/22 12:15AM	Adam4	1		1
Mon 03/23/15	GraffitiNotGang	15006728	THOMAS D FRANKS PA/ 547 HAYWOOD RD	Occurred Between Mon 3/23 12:00AM and Mon 9:05AM Span of 9hours 6minutes	Adam4	1		1
Thu 03/26/15	GraffitiNotGang	15007050	LUKE ATKINSON FURNITURE/ 728 HAYWOOD RD	Occurred Between Thu 3/26 12:00AM and Thu 9:51AM Span of 9hours 51minutes	Adam4	1		1
		15007052	12 BREVARD RD	Occurred Between Thu 3/26 12:00AM and Thu 10:18AM Span of 10hours 18minutes	Adam4	1		1
Fri 03/27/15	GraffitiNotGang	15007204	20 OLNEY RD	Occur time spans 1days from Wed 3/25 6:00PM to Thu 3/26 6:00PM	Adam4	1		1
Sat 03/28/15	GraffitiNotGang	15007246	GRACE BAPTIST CHURCH/ 718 HAYWOOD RD	Occur time spans 2days 11hours from Thu 3/26 1:00AM to Sat 3/28 12:00PM	Adam4	1		1
Fri 04/03/15	GraffitiNotGang	15007812	CARRIER PARK- ASHEVILLE PARKS R/ 219 AMBOY RD	Occurred On Fri 4/3 8:01PM	Adam4	1		1
Sun 04/05/15	GraffitiNotGang	15007955	CARRIER PARK- ASHEVILLE PARKS R/ 219 AMBOY RD	Occurred Between Sat 4/4 8:00PM and Sun 11:30AM Span of 15hours 30minutes	Adam4	1		1
		15007946	HAPPY HILL RESTAURANT/ 1400 PATTON AVE	Occurred Between Sun 4/5 7:00AM and Sun 9:30AM Span of 2hours 30minutes	Adam4	1		1
Mon 04/06/15	GraffitiNotGang	15007997	VACANT/ 235 AMBOY RD	Occur time spans 1days 9hours 8minutes from Sun 4/5 12:00AM to Mon 4/6 9:08AM	Adam4	1		1
Thu 04/09/15	GraffitiNotGang	15008353	C AND C CHEMICAL COMPANY/ 119 HAYWOOD RD	Occurred Between Wed 4/8 7:00PM and Thu 8:52AM Span of 13hours 52minutes	Adam4	1		1
		15008405	CITY OF ASHEVILLE/ 50 OREGON AVE	Occurred Between Thu 4/9 12:00PM and Thu 2:45PM Span of 2hours 45minutes	Adam1	1		1
Mon 04/13/15	GraffitiNotGang	15008736	BLUE RIDGE PRINTING CO/ 544 HAYWOOD RD	14hours 45minutes from Fri 4/10 5:00PM to Mon 4/13 7:45AM	Adam4	1		1
Fri 04/17/15	GraffitiNotGang	15009157	BEAN WERKS/ 753 HAYWOOD RD	Occurred Between Thu 4/16 8:00PM and Fri 7:00AM Span of 11hours	Adam4		1	1
		15009169	728 HAYWOOD RD	Occurred Between Thu 4/16 6:00PM and Fri 1:54PM Span of 19hours 54minutes	Adam4		1	1
Sat 04/18/15	GraffitiNotGang	15009265	THE ODDITORIUM/ 1045 HAYWOOD RD	Occurred Between Fri 4/17 10:00PM and Sat 2:05PM Span of 16hours 5minutes	Adam4		1	1
Grand Total						18	3	21

- Adam2 and Adam3
 - No spike activity

- Baker1 and Baker2
 - 3 Graffiti reported Fri 4/17.
 1. See Graffiti in Citywide section for detail.
 - 3 Non-domestic Simple Assaults during week from Mon 4/13 to Sun 4/19 (average is 0.7 per week). And one nearby in Downtown.



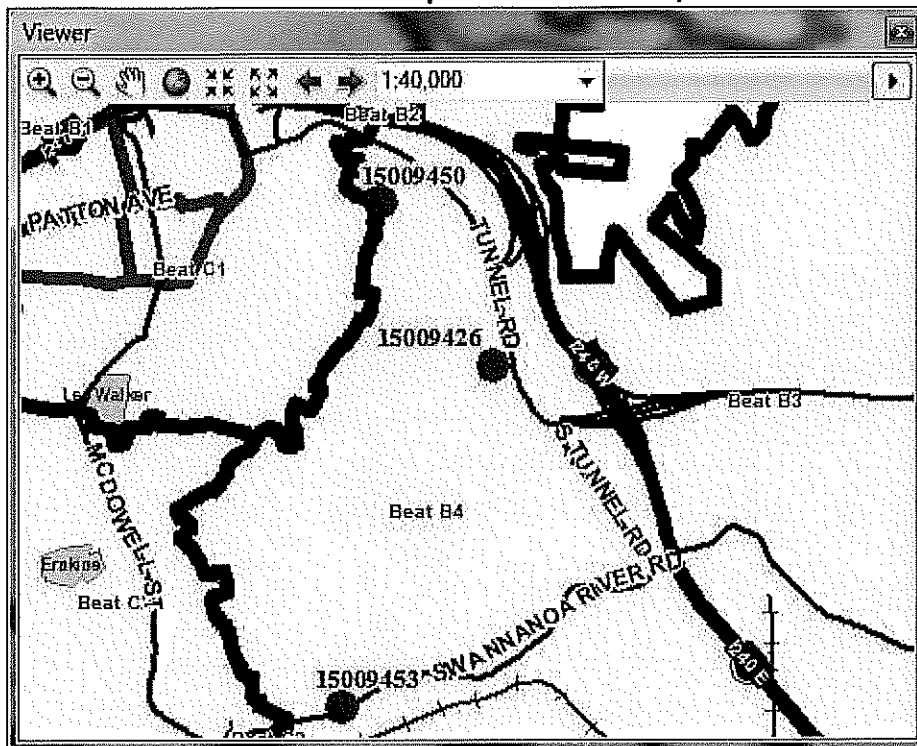
RepDate	OffenseCat	casenum1	address1	happened	Beat	Suspended	Closed	Open	Grand Total
Mon 04/13/15	Simple_NotDomestic	15008735	HILLCREST APTS/ 100 ATKINSON ST, AT 35C	Occurred On Sun 4/12 11:00PM	Baker1			1	1
Wed 04/15/15	Simple_NotDomestic	15008991	19 MAXWELL ST/MARCELLUS ST	Occurred On Wed 4/15 4:18PM	Baker1	1			1
Thu 04/16/15	Simple_NotDomestic	15009126	SMOKEYS TAVERN/ 18 BROADWAY ST	Occurred Between Thu 4/16 10:00PM and Thu 11:56PM Span of 1hours 56minutes	Charlie1		1		1
Sat 04/18/15	Simple_NotDomestic	15009304	1 MONTFORD AVE TO I240 W/CHERRY ST N	Occurred Between Sat 4/18 7:00PM and Sat 9:17PM Span of 2hours 17minutes	Baker1			1	1
Grand Total						1	1	2	4

Day of Week / Time of Day.

...4 of the 4 incidents, or 100%, had found/secure times within 12 hours.

Hour Range	1Mon	2Tue	3Wed	4Thu	5Fri	6Sat	7Sun	ByHour
00:00-03:00	0%	0%	0%	0%	0%	0%	0%	0%
03:00-06:00	0%	0%	0%	0%	0%	0%	0%	0%
06:00-09:00	0%	0%	0%	0%	0%	0%	0%	0%
09:00-12:00	0%	0%	0%	0%	0%	0%	0%	0%
12:00-15:00	0%	0%	0%	0%	0%	0%	0%	0%
15:00-18:00	0%	0%	20%	0%	0%	0%	0%	20%
18:00-21:00	0%	0%	0%	0%	0%	17%	0%	17%
21:00-24:00	0%	0%	0%	34%	0%	8%	20%	63%
ByDay	0%	0%	20%	34%	0%	25%	20%	100%

- Baker3 and Baker4
 - 3 Graffiti so far during week from Mon 4/20 to Sun 4/26 (average is 0.4 per week).
 - All 3 of these reported on Mon 4/20



RepDate	OffenseCat	casenum1	address1	happened	Beat	Open	Grand Total
Mon 04/20/15	GraffitiNotGang	15009453	53 SWANNANO RIVER RD/CALEDONIA RD	Occur time spans 4days 15minutes from Thu 4/16 6:00PM to Mon 4/20 6:15PM	Baker4	1	1
		15009426	STAR LANES BOWLING CTR/ 451 KENILWORTH RD	Occur time spans 2days 20hours from Fri 4/17 4:00PM to Mon 4/20 12:00PM	Baker4	1	1
		15009450	1 BEAUCATCHER RD/COLLEGE ST	Occurred On Mon 4/20 5:38PM	Baker4	1	1
Grand Total						3	3

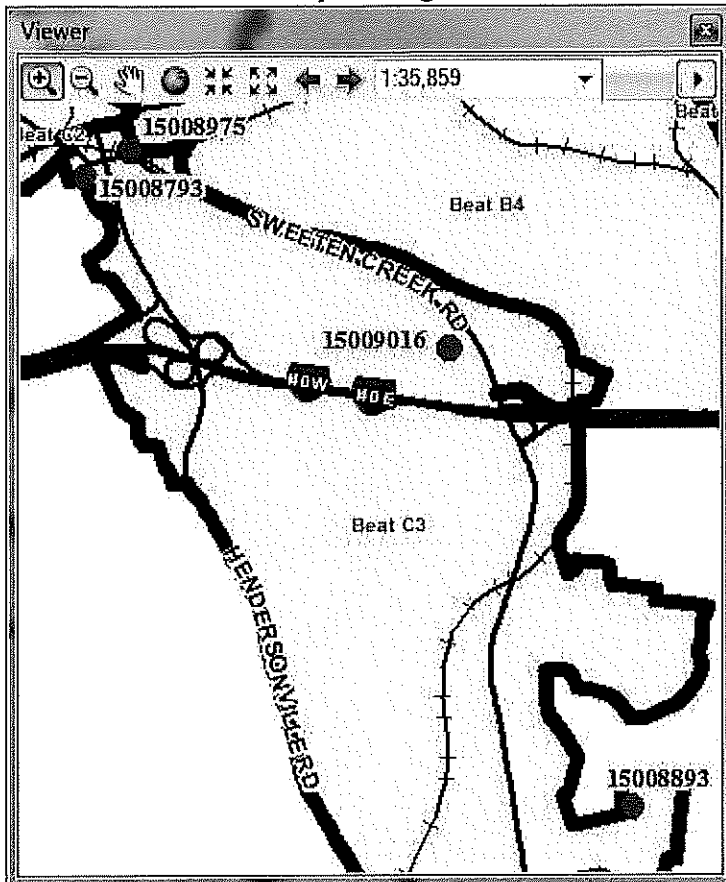
Day of Week / Time of Day.

...1 of the 3 incidents, or 33%, had found/secure times within 12 hours.

Hour Range	1Mon	2Tue	3Wed	4Thu	5Fri	6Sat	7Sun	ByHour
00:00-03:00	0%	0%	0%	0%	0%	0%	0%	0%
03:00-06:00	0%	0%	0%	0%	0%	0%	0%	0%
06:00-09:00	0%	0%	0%	0%	0%	0%	0%	0%
09:00-12:00	0%	0%	0%	0%	0%	0%	0%	0%
12:00-15:00	0%	0%	0%	0%	0%	0%	0%	0%
15:00-18:00	100%	0%	0%	0%	0%	0%	0%	100%
18:00-21:00	0%	0%	0%	0%	0%	0%	0%	0%
21:00-24:00	0%	0%	0%	0%	0%	0%	0%	0%
ByDay	100%	0%	0%	0%	0%	0%	0%	100%

- Charlie1 and Charlie2

- No spike activity
- Charlie3
 - 4 Larceny during week from Mon 4/13 to Sun 4/19 (average is 0.8 per week).



RepDate	OffenseCat	casenum1	address1	happened	Beat	Open	Grand Total
Mon 04/13/15	Larceny	15008793	STARBUCKS COFFEE/ 40 ALL SOULS CRES	Occurred On Mon 4/13 6:50PM	Charlie3	1	1
Tue 04/14/15	Larceny	15008893	103 FOREST LAKE DR	Occurred Between Sat 4/11 10:00PM and Sun 6:00AM Span of 8hours	Charlie3	1	1
Wed 04/15/15	Larceny	15008976	VILLAGE WAYSIDE BAR & GRILLE/ 30 LODGE ST	Occurred On Mon 4/13 2:00AM	Charlie3	1	1
Thu 04/16/15	Larceny	15009016	37 HICKMAN DR	Occur time spans 2days 13hours 35minutes from Mon 4/13 12:00PM to Thu 4/16 1:35AM	Charlie3	1	1
Grand Total						4	4

Day of Week / Time of Day.

...3 of the 4 incidents, or 75%, had found/secure times within 12 hours.

Hour Range	1Mon	2Tue	3Wed	4Thu	5Fri	6Sat	7Sun	ByHour
00:00-03:00	24%	0%	0%	0%	0%	0%	16%	39%
03:00-06:00	0%	0%	0%	0%	0%	0%	16%	16%
06:00-09:00	0%	0%	0%	0%	0%	0%	0%	0%
09:00-12:00	0%	0%	0%	0%	0%	0%	0%	0%
12:00-15:00	0%	0%	0%	0%	0%	0%	0%	0%
15:00-18:00	0%	0%	0%	0%	0%	0%	0%	0%
18:00-21:00	24%	0%	0%	0%	0%	0%	0%	24%
21:00-24:00	0%	0%	0%	0%	0%	21%	0%	21%
ByDay	47%	0%	0%	0%	0%	21%	32%	100%

- Charlie4 and Charlie5
 - No spike activity

Ed Eads
 Crime Analyst
 Asheville Police Department
 NC 828 259-5883
eeads@ashevillenc.gov



Think Green! Please do not print this e-mail unless necessary

Confidentiality Notice: This email message, including any attachments, is for the sole use of the intended recipient(s) and may contain confidential and privileged information. Any unauthorized use, disclosure, or distribution is prohibited.

Ben Fulmer

From: eeads@ashevillenc.gov
Sent: Thursday, April 16, 2015 3:48 PM
To: PoliceDistrictAWestSupervisors@ashevillenc.gov;
PoliceDistrictBNorth/EastSupervisors@ashevillenc.gov;
PoliceDistrictCSouth/CentralSupervisors@ashevillenc.gov
Cc: SBelcher@ashevillenc.gov; wwood@ashevillenc.gov; sgonce@ashevillenc.gov;
CReeceYoung@ashevillenc.gov; BGriffin@ashevillenc.gov; JStepp@ashevillenc.gov;
sriddle@ashevillenc.gov; SHendricks@ashevillenc.gov;
CRIMINVESTSUPV@ashevillenc.gov; dromick@ashevillenc.gov;
kmcculloch@ashevillenc.gov; spruett@ashevillenc.gov; afowler@ashevillenc.gov;
forensics@ashevillenc.gov; PoliceLieutenants@ashevillenc.gov;
KSkonieczny@ashevillenc.gov; TBrigman@ashevillenc.gov; RJustus@ashevillenc.gov;
SDavis@ashevillenc.gov; LLovelace@ashevillenc.gov; CWells@ashevillenc.gov
Subject: Compstat Bulletin 1319
Attachments: Overview_1319.pdf; TwoPlusWeeks_Adam.kmz; TwoPlusWeeks_Baker.kmz;
TwoPlusWeeks_Charlie.kmz

This bulletin includes above average activity for weeks 1318 and 1319.

In an effort to streamline the bulletin I've attached a modified Overview pdf file (it now includes Public Housing), and Google Earth maps for the three districts. A separate email will be sent that contains the additional reference files. Comments / suggestions welcomed. There are tentative plans to place reference files into the G-drive.

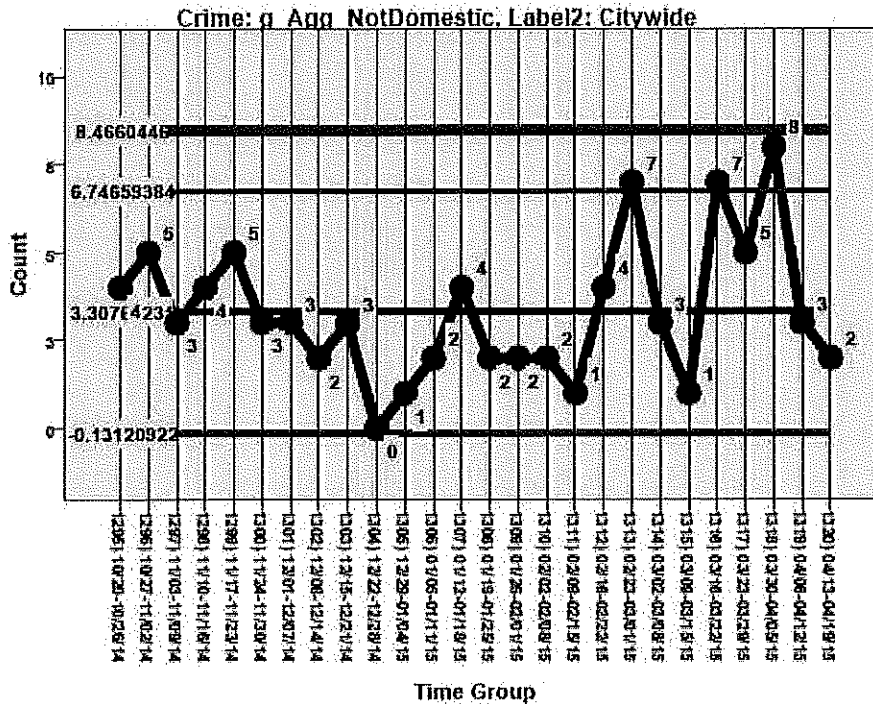
The Overview_1319.pdf file provides a snapshot of activity for all crime types, and marks areas that show an increase in activity. You can quickly see week-to-week progress.

Dates below are when the event was reported unless otherwise noted. Recent week 1319 runs from Mon 4/6 to Sun 4/12. Info in this bulletin contains RMS system info as of Thursday 4/16/15 AM.

	Week #	Mon	Tue	Wed	Thu	Fri	Sat	Sun
Prior Week	1318	3/30	3/31	4/1	4/2	4/3	4/4	4/5
Recent Week	1319	4/6	4/7	4/8	4/9	4/10	4/11	4/12
Current Week	1320	4/13	4/14	4/15	4/16	4/17	4/18	4/19

██████████ indicates a spike where at least some of the events, based on counts, are quite likely to be related. Other listed events indicate above average activity.

- Citywide Non-Domestic Aggravated Assaults has had [REDACTED], including week 1318. File 1319_01_AggAssaults_aFull.pdf (supplement email) contains detail; _List.pdf contains a simple list.

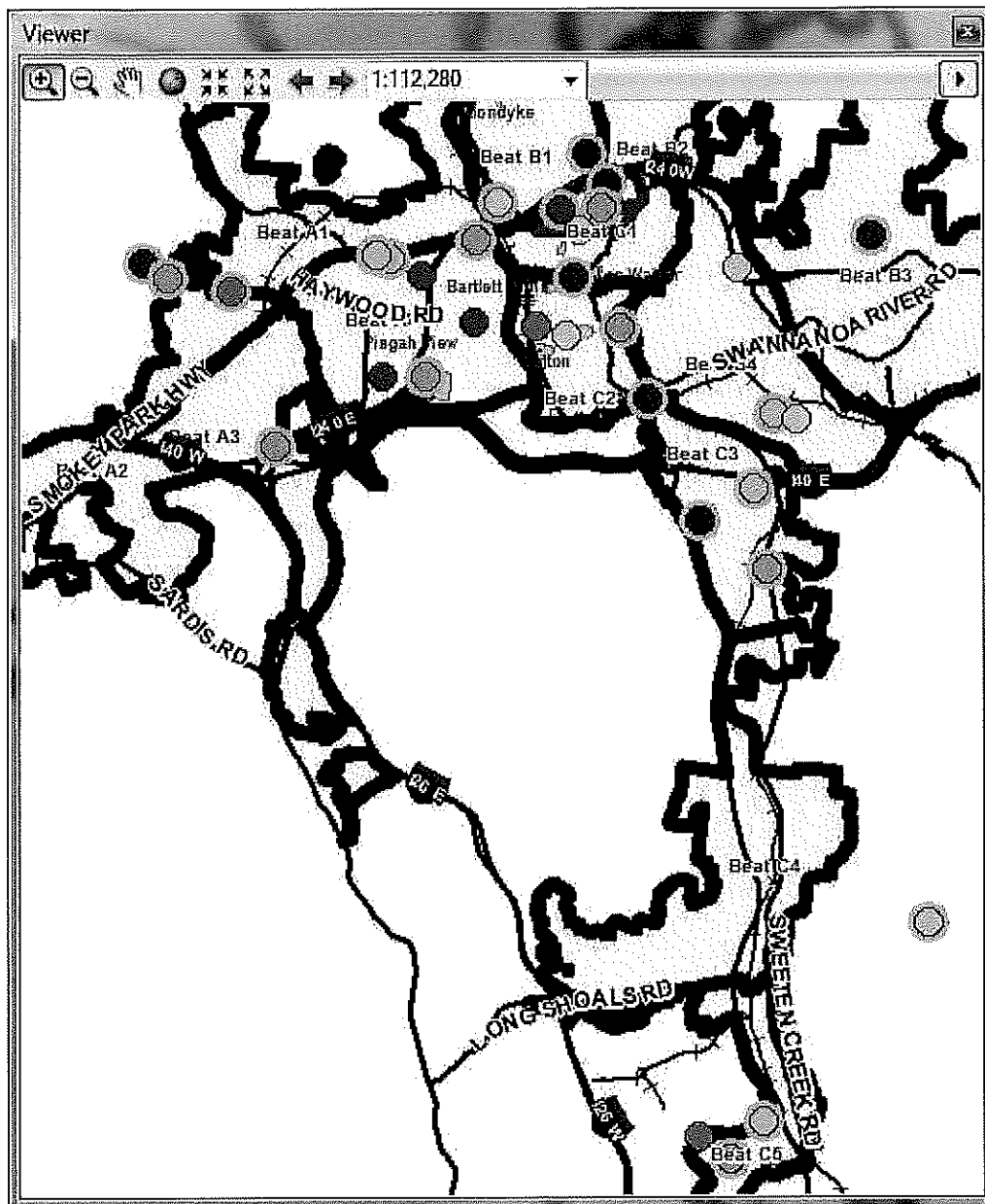


Day of Week / Time of Day.

...42 of the 43 incidents, or 98%, had found/secure times within 12 hours.

Hour Range	1Mon	2Tue	3Wed	4Thu	5Fri	6Sat	7Sun	ByHour
00:00-03:00	1%	0%	4%	0%	9%	1%	1%	17%
03:00-06:00	0%	5%	0%	0%	0%	1%	1%	8%
06:00-09:00	0%	3%	0%	0%	0%	0%	0%	3%
09:00-12:00	1%	5%	2%	0%	3%	1%	0%	12%
12:00-15:00	4%	8%	2%	0%	0%	0%	1%	15%
15:00-18:00	2%	8%	0%	0%	9%	1%	0%	20%
18:00-21:00	0%	0%	2%	0%	9%	4%	1%	16%
21:00-24:00	3%	0%	4%	1%	0%	1%	0%	9%
ByDay	11%	29%	13%	1%	30%	10%	5%	100%

These Aggravated Assault locations are color coded by week (dark green ... yellow ... dark red). Those circled in light blue are for the high activity weeks of 1313 (dark green), 1316 (yellow), 1318 (orange).



- **Citywide Business Burglary**
 - Good results here. Since Mon March 23 we've averaged 1.3 per week. Prior to this we've averaged about 4 per week.
 - Charlie 4 and Charlie5 did see two hits last week from Mon 4/6 to Sun 4/12, see their section below.
- **Citywide Domestic Simple Assaults.** 11 incidents from Mon 4/6 to Sun 4/12 (average is 6.0 per week).

RepDate	OffenseCat	casenum1	address1	happened	Beat	Closed	Open	Grand Total
Tue 04/07/15	Simple_DVIP	15008163	L AND H APARTMENTS/ 186 NEW HAW CREEK RD, AT: 15	Occurred On Tue 4/7 9:46PM	Baker3	1		1
		15008167	24 ARCO RD	Occurred On Tue 4/7 10:37PM	Baker3	1		1
	Simple_DV_notIP	15008137	26 NIXON TER	Occurred On Tue 4/7 5:00PM	Baker3	1		1
Wed 04/08/15	Simple_DVIP	15008302	111 BEAR CREEK LN, AT: 9	Occurred On Wed 4/1 9:00PM	Adam3		1	1
		15008181	4 ASCOT POINT CIR, AT: 105	Occurred On Wed 4/8 5:02AM	Charlie4	1		1
		15008197	ECONO LODGE/ 190 TUNNEL RD, AT: 120	Occurred On Wed 4/8 9:30AM	Baker4		1	1
	Simple_DV_notIP	15008176	HILLSIDE MOBILE HOME PARK/ 1256 SWEETEN CREEK RD	Occurred On Wed 4/8 1:47AM	Charlie3	1		1
Thu 04/09/15	Simple_DVIP	15008376	HILLCREST APTS/ 100 ATKINSON ST	Occurred Between Thu 4/9 7:30AM and Thu 10:29AM Span of 2hours 59minutes	Baker1		1	1
Sat 04/11/15	Simple_DVIP	15008592	HILLCREST APTS/ 100 ATKINSON ST, AT: 25H	Occurred On Sat 4/11 4:33AM	Baker1	1		1
Sun 04/12/15	Simple_DVIP	15008694	AVE	Occurred On Sun 4/12 6:11PM	Adam4	1		1
		15008708	40 ORMOND AVE	Occurred Between Sun 4/12 11:36PM and Sun 11:37PM Span of 1minutes	Adam4	1		1
Grand Total						8	3	11

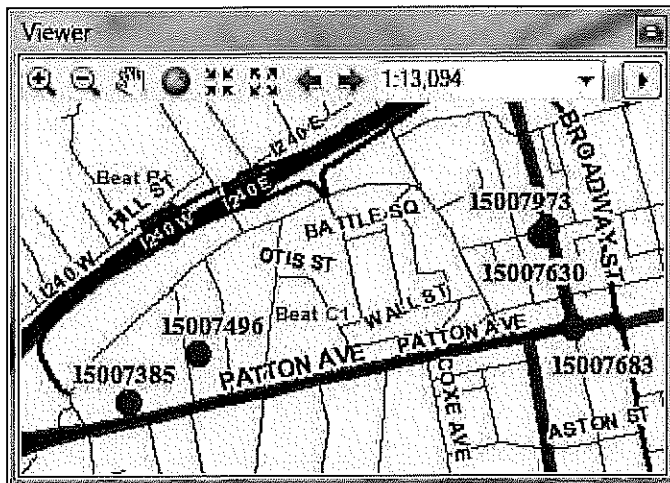
Day of Week / Time of Day.

...11 of the 11 incidents, or 100%, had found/secure times within 12 hours.

Hour Range	1Mon	2Tue	3Wed	4Thu	5Fri	6Sat	7Sun	ByHour
00:00-03:00	0%	0%	8%	0%	0%	0%	0%	8%
03:00-06:00	0%	0%	8%	0%	0%	8%	0%	15%
06:00-09:00	0%	0%	0%	6%	0%	0%	0%	6%
09:00-12:00	0%	0%	8%	6%	0%	0%	0%	14%
12:00-15:00	0%	0%	0%	0%	0%	0%	0%	0%
15:00-18:00	0%	12%	0%	0%	0%	0%	0%	12%
18:00-21:00	0%	0%	0%	0%	0%	0%	8%	8%
21:00-24:00	0%	23%	8%	0%	0%	0%	8%	38%
ByDay	0%	35%	31%	12%	0%	8%	15%	100%

- **Downtown**

- 5 Non-Domestic Simple Assaults during week from Mon 3/30 to Sun 4/5 (average is 2.2 per week).
- File 1319_03_DtwnSimple_aFull.pdf (supplement email) contains detail.



RepDate	OffenseCat	casenum1	address1	happened	Beat	Closed	Open	Grand Total
Mon 03/30/15	Simple_NotDomestic	15007385	WNC RESCUE MISSION/ 225 PATTON AVE	Occurred Between Mon 3/30 8:00AM and Mon 4:01PM Span of 8hours 1minutes	Charlie1	1		1
Tue 03/31/15	Simple_NotDomestic	15007496	PRITCHARD PARK/ 19 N ANN ST	Occurred Between Sun 3/29 8:00AM and Sun 8:30AM Span of 30minutes	Charlie1	1		1
Thu 04/02/15	Simple_NotDomestic	15007683	17 PATTON AVE/N LEXINGTON AVE	Occurred On Thu 4/2 5:38PM	Charlie1	1		1
		15007630	THE SOUTHERN/ 41 N LEXINGTON AVE	Occurred Between Thu 4/2 1:45AM and Thu 2:01AM Span of 16minutes	Charlie1		1	1
Sun 04/05/15	Simple_NotDomestic	15007973	45 N LEXINGTON AVE/WALNUT ST	Occurred On Sun 4/5 9:01PM	Charlie1	1		1
Grand Total						4	1	5

Day of Week / Time of Day.

...5 of the 5 incidents, or 100%, had found/secure times within 12 hours.

Hour Range	1Mon	2Tue	3Wed	4Thu	5Fri	6Sat	7Sun	ByHour
00:00-03:00	0%	0%	0%	33%	0%	0%	0%	33%
03:00-06:00	0%	0%	0%	0%	0%	0%	0%	0%
06:00-09:00	2%	0%	0%	0%	0%	0%	16%	18%
09:00-12:00	6%	0%	0%	0%	0%	0%	0%	6%
12:00-15:00	6%	0%	0%	0%	0%	0%	0%	6%
15:00-18:00	4%	0%	0%	17%	0%	0%	0%	21%
18:00-21:00	0%	0%	0%	0%	0%	0%	0%	0%
21:00-24:00	0%	0%	0%	0%	0%	0%	17%	17%
ByDay	17%	0%	0%	50%	0%	0%	33%	100%

- Public Housing

- ██████████ during week from Mon 3/30 to Sun 4/5 (average is 5.2 per week).

- Note the 4 Residential Burglary events (average is 1.8 per week).
- Note the 5 Vandalism events (average is 1.7 per week).

- File 1319_04_PH_Property_aFull.pdf (supplement email) contains detail.

RepDate	OffenseCat	casenum1	address1	happened	Seat	Suspended	Closed	Open	Grand Total
Mon 03/30/15	BurgResidence	15007417	152 STEWART ST	Occurred On Mon 3/30 9:23PM	Adam4			1	1
Tue 03/31/15	BurgResidence	15007497	HILLCREST APTS/ 100 ATKINSON ST	Occurred On Tue 3/31 7:47PM	Baker1			1	1
	VandalismCar	15007426	DEAVERVIEW APARTMENTS/ 275 DEAVERVIEW RD, AT: 11	Occurred On Tue 3/31 12:10AM	Adam1			1	1
Wed 04/01/15	Vandalism	15007601	42 KLONDYKE PL	Occurred On Wed 4/1 9:04PM	Baker1			1	1
Thu 04/02/15	BurgResidence	15007676	BARTLETT ARMS APARTMENTS/ 121 BARTLETT ST, AT: 416	Occurred Between Thu 4/2 1:00PM and Thu 3:30PM Span of 2hours 30minutes	Charlie2	1			1
	Larceny	15007674	ASTON PARK TOWERS/ 165 S FRENCH BROAD AVE	Occur time spans 3days from Wed 3/25 4:14PM to Sat 3/28 4:14PM	Charlie1			1	1
	VandalismCar	15007664	PISGAH VIEW APTS/ 1 GRANADA ST, AT: 37F	Occurred Between Wed 4/1 7:00PM and Thu 2:16AM Span of 7hours 16minutes	Adam4	1			1
Fri 04/03/15	Larceny	15007728	BARTLETT ARMS APARTMENTS/ 121 BARTLETT ST	Occurred Between Fri 4/3 5:30AM and Fri 5:40AM Span of 10minutes	Charlie2		1		1
		15007740	PISGAH VIEW APTS/ 1 GRANADA ST, AT: 8F	Occurred Between Thu 4/2 1:30PM and Thu 4:30PM Span of 3hours	Adam4	1			1
Sat 04/04/15	Vandalism	15007888	BARTLETT ARMS APARTMENTS/ 121 BARTLETT ST	Occurred On Sat 4/4 5:07PM	Charlie2		1		1
Sun 04/05/15	BurgResidence	15007938	ASTON PARK GARDEN APARTMENTS/ 165 S FRENCH BROAD AVE, AT: 5H	Occurred Between Sat 4/4 10:00AM and Sat 11:30PM Span of 13hours 30minutes	Charlie1	1			1
	VandalismCar	15007968	ASTON PARK TOWERS/ 165 S FRENCH BROAD AVE	Occurred Between Sun 4/5 8:00AM and Sun 12:00PM Span of 4hours	Charlie1			1	1
		15007967	DEAVERVIEW APTS/ 275 DEAVERVIEW RD, AT: 6C	Occurred On Sun 4/5 5:45PM	Adam1		1		1
Grand Total						4	3	6	13

Day of Week / Time of Day.

...11 of the 13 incidents, or 85%, had found/secure times within 12 hours.

Hour Range	1Mon	2Tue	3Wed	4Thu	5Fri	6Sat	7Sun	By hour
00:00-03:00	0%	8%	0%	4%	0%	0%	0%	11%
03:00-06:00	0%	0%	0%	0%	7%	0%	0%	7%
06:00-09:00	0%	0%	0%	0%	0%	0%	3%	3%
09:00-12:00	0%	0%	0%	0%	0%	0%	10%	10%
12:00-15:00	0%	0%	0%	8%	0%	0%	0%	8%
15:00-18:00	0%	0%	0%	6%	0%	8%	5%	18%
18:00-21:00	0%	8%	7%	0%	0%	0%	0%	15%
21:00-24:00	8%	0%	19%	0%	0%	0%	0%	26%
ByDay	8%	15%	26%	17%	7%	8%	19%	100%

- Aston Towers had 3 Property Crimes during week from Mon 3/30 to Sun 4/5 (average is 0.4 per week).
 1. See above for details.
- Bartlett Arms had 3 Property Crimes during week from Mon 3/30 to Sun 4/5 (average is 0.5 per week).
 1. See above for details.

- Adam1 and Adam4
 - See Citywide Non-Domestic Aggravated Assaults section. Adam1 and Adam4 had a spike of 3 events from Mon 3/16 to Sun 3/22, and shows 2 events so far for the current week from Mon 4/13 to Sun 4/19. (average is 0.7 per week)
- Adam2 and Adam3
 - See Citywide Non-Domestic Aggravated Assaults section. Adam2 and Adam3 had 2 events from Mon 3/30 to Sun 4/5. (average is 0.2 per week)
 - 3 Unlocked CarB&E during week from Mon 4/6 to Sun 4/12 (average is 1.2 per week).
- Baker1 and Baker2
 - See Citywide Non-Domestic Aggravated Assaults section. Baker1 and Baker2 had 2 events in each of the two weeks from Mon 2/16 to Sun 3/1. (average is 0.3 per week)
- Baker3 and Baker4
 - See Citywide Non-Domestic Aggravated Assaults section. Baker3 and Baker4 had 2 events from Mon 3/23 to Sun 3/29. (average is 0.5 per week)
 - 4 Non-Domestic Simple Assaults during week from 4/6 to 4/12 (average is 1.4 per week), and 1 on Mon 4/13.

RepDate	OffenseCat	casenum1	address1	happened	Beat	Suspended	Closed	Open	Grand Total
Tue 04/07/15	Simple_NotDomestic	15008152	LIBRARY/ 902 TUNNEL RD	Occurred On Tue 4/7 8:01PM	Baker3		1		1
Wed 04/08/15	Simple_NotDomestic	15008281	HOPE HOUSE/ 62 MARNE RD	Occurred On Wed 4/8 4:20PM	Baker4		1		1
Fri 04/10/15	Simple_NotDomestic	15008513	5220 VERDE VISTA CIR	11hours 58minutes from Tue 4/7 11:30PM to Fri 4/10 11:28AM	Baker3			1	1
Sat 04/11/15	Simple_NotDomestic	15008583	RD	Occurred On Sat 4/11 1:51AM	Baker3	1			1
Mon 04/13/15	Simple_NotDomestic	15008714	LEES 55 BP STATION/ 1411 TUNNEL RD	Occurred On Mon 4/13 3:50AM	Baker3	1			1
Grand Total						2	2	1	5

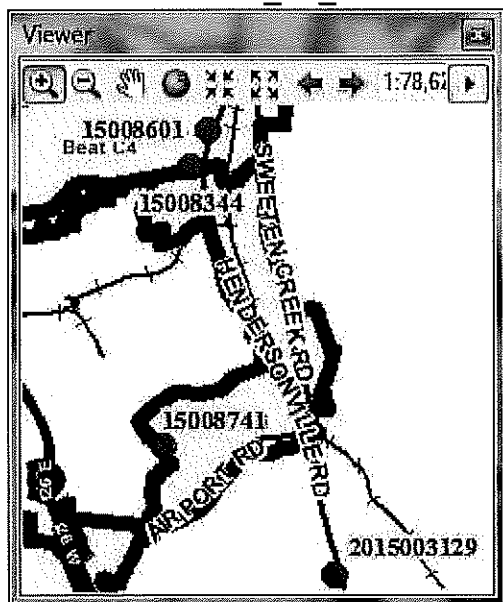
- 4 Domestic Simple Assaults during week from Mon 4/6 to Sun 4/12 (average is 1.3 per week).

RepDate	OffenseCat	casenum1	address1	happened	Beat	Closed	Open	Grand Total
Tue 04/07/15	Simple_DVIP	15008163	L AND H APARTMENTS/ 186 NEW HAW CREEK	Occurred On Tue 4/7 9:46PM	Baker3	1		1
		15008167	RD, AT: 15	Occurred On Tue 4/7 10:37PM	Baker3	1		1
	Simple_DV_notIP	15008137	24 ARCO RD	Occurred On Tue 4/7 5:00PM	Baker3	1		1
Wed 04/08/15	Simple_DVIP	15008197	ECONO LODGE/ 190 TUNNEL RD, AT: 120	Occurred On Wed 4/8 9:30AM	Baker4		1	1
Grand Total						3	1	4

- 3 Larceny on Tue 4/14 (average is 0.8 per day).

RepDate	OffenseCat	casenum1	address1	happened	Beat	Suspended	Open	Grand Total	
Tue 04/14/15	Larceny	15008877	SOCIAL SECURITY ADMINISTRATION/ 800 CENTRE PARK DR	Occurred Between Tue 4/14 10:00AM and Tue 10:30AM Span of 30 minutes	Baker3		1	1	
		15008880	KAY JEWELERS/ 3 S TUNNEL RD	Occurred On Tue 4/14 4:49PM	Baker4		1	1	
		15008810	TREASURE CLUB/ 520 SWANNANOVA RIVER RD	Occurred On Tue 4/14 12:06AM	Baker3	1		1	
Grand Total							1	2	3

- Charlie1 and Charlie2
 - No spike activity
- Charlie3
 - No spike activity
- Charlie4 and Charlie5
 - 2 Business Burglary during week from 4/6 to 4/12 (average is 0.5 per week), and one since then. We also see one nearby in the County. File 1319_02_BusinessBurg_aFull.pdf (supplement email) contains detail.



RepDate	OffenseCat	casenum1	address1	happened	Beat	Open	Grand Total
Thu 04/09/15	BurgBusiness	2015003129	2635 HENDERSONVILLE RD	Occurred Between Wed 4/8 10:00PM and Thu 10:38AM Span of 12hours 38minutes	InCounty	1	1
		15008344	SUBWAY/ 4 LONG SHOALS RD	Occurred Between Wed 4/8 9:15PM and Thu 7:00AM Span of 9hours 45minutes	Charlie4	1	1
Sat 04/11/15	BurgBusiness	15008601	IANNUCCIS PIZZARIA & ITALIAN R/ 1981 HENDERSONVILLE RD	Occurred On Sat 4/11 10:08AM	Charlie4	1	1
Mon 04/13/15	BurgBusiness	15008741	MONTESSORRI COUNTRY DAY/ 158 BRADLEY BRANCH RD	Occur time spans 6days 1hours from Fri 4/3 8:30AM to Thu 4/9 9:30AM	Charlie5	1	1
Grand Total						4	4

Ed Eads
 Crime Analyst
 Asheville Police Department
 NC 828 259-5883
eeads@ashevillenc.gov



Think Green! Please do not print this e-mail unless necessary

Confidentiality Notice: This email message, including any attachments, is for the sole use of the intended recipient(s) and may contain confidential and privileged information. Any unauthorized use, disclosure, or distribution is prohibited.

Ben Fulmer

From: eeads@ashevillenc.gov
Sent: Wednesday, March 04, 2015 3:03 PM
To: grollins@ashevillenc.gov
Subject: FW: glass break B&Es and drug store robberies
Attachments: Map1.pdf; Map1.kmz; gProperty.pdf; aFull.pdf; eSuspects.pdf

FYI

From: Ed Eads
Sent: Wednesday, March 04, 2015 2:16 PM
To: Kelly Loiacono
Cc: Germaine Weaver; Joshua Meindl
Subject: RE: glass break B&Es and drug store robberies

Kelly,

Attached is a static pdf map and a Google Earth map for these events. Let me know if any additional info is needed. Thanks

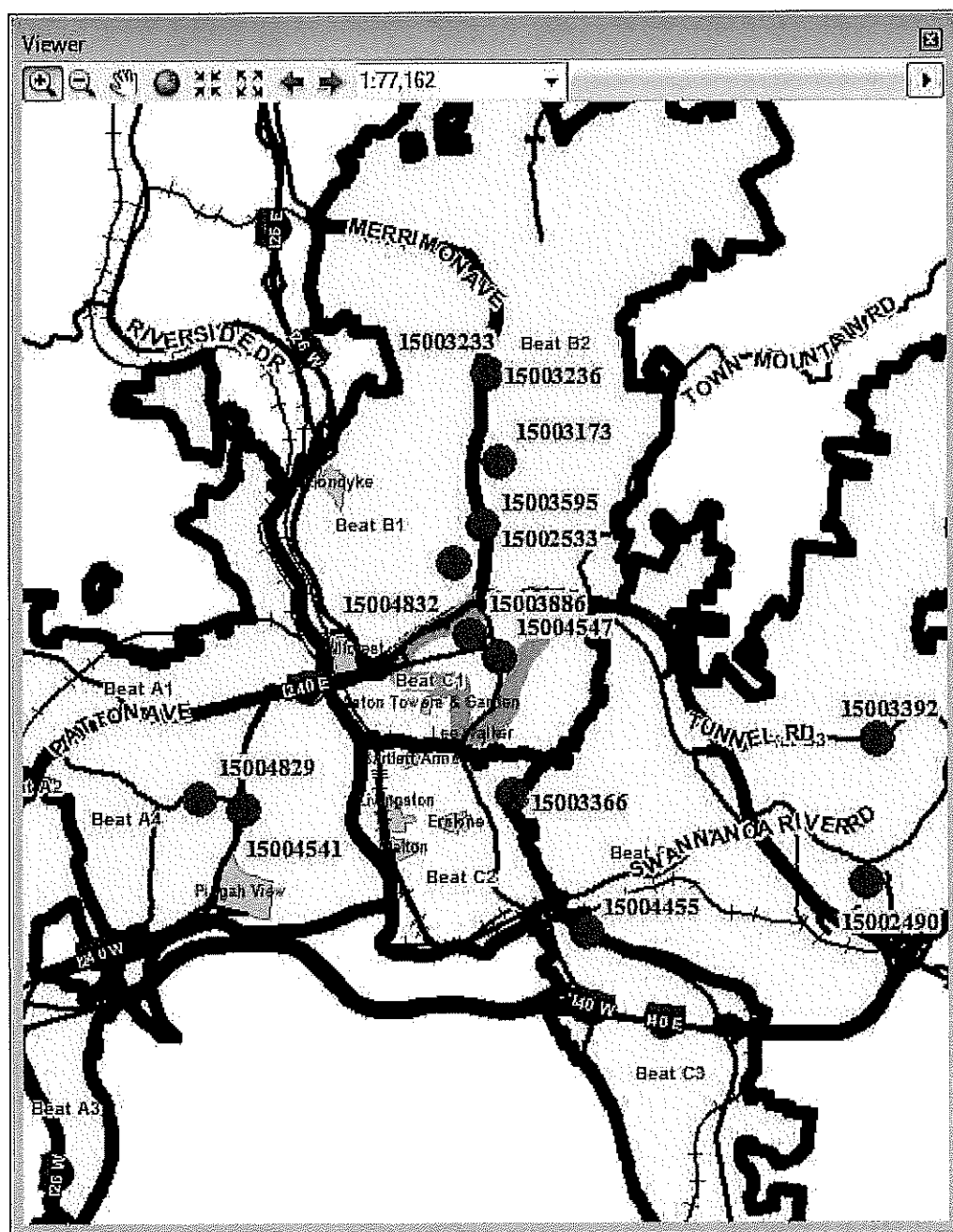
Day of Week / Time of Day.

.. 17 of the 21 incidents, or 81%, had found/secure times within 12 hours.

Hour Range	1Mon	2Tue	3Wed	4Thu	5Fri	6Sat	7Sun	ByHour
00:00-03:00	13%	0%	8%	5%	5%	0%	0%	31%
03:00-06:00	8%	0%	8%	0%	5%	0%	0%	21%
06:00-09:00	4%	0%	8%	0%	1%	0%	0%	14%
09:00-12:00	9%	0%	0%	0%	0%	0%	0%	9%
12:00-15:00	0%	0%	0%	0%	0%	0%	0%	0%
15:00-18:00	0%	0%	0%	0%	0%	0%	0%	0%
18:00-21:00	0%	0%	0%	0%	0%	0%	0%	0%
21:00-24:00	4%	11%	2%	5%	0%	0%	3%	26%
ByDay	38%	11%	27%	11%	11%	0%	3%	100%

RepDate	OffenseCat	casenum1	address1	happened	Beat	Suspended	Closed	Open	Grand Total
11/05/14	BurgBusiness	14025819	877 SMOKEY PARK HWY	Occurred Between Wed 11/5 12:00AM and Wed 8:30AM Span of 8hours 30minutes	Adam2	1			1
12/12/14	BurgBusiness	14028824	524 HENDERSONVILLE RD	Occurred Between Thu 12/11 8:00PM and Fri 10:00AM Span of 14hours	Charlie3		1		1
12/22/14	BurgBusiness	14029656	MAJESTIC NAILS/ 273 TUNNEL RD	Occurred On Mon 12/22 1:41AM	Baker4	1			1
12/24/14	BurgBusiness	14029848	1070 TUNNEL RD	Occurred Between Wed 12/24 12:00AM and Wed 8:37AM Span of 8hours 37minutes	Baker3	1			1
		14029847	1070 TUNNEL RD	Occurred Between Wed 12/24 12:00AM and Wed 8:37AM Span of 8hours 37minutes	Baker3	1			1
01/19/15	BurgBusiness	15001381	YOLO/ 505 MERRIMON AVE	Occurred Between Sun 1/18 10:32PM and Mon 9:00AM Span of 10hours 28minutes	Baker2	1			1
01/21/15	BurgBusiness	15001676	ELENA'S MEXICAN GRILL/ 2424 HENDERSONVILLE RD	Occurred Between Tue 1/20 9:00PM and Wed 11:03AM Span of 14hours 3minutes	Charlie5	1			1
		15001650	ASHEVILLE TOBACCO/ 152 BLEACHERY BLVD. AT: A	Occurred Between Wed 1/21 11:00PM and Wed 11:05PM Span of 5minutes	Baker3	1			1
01/30/15	BurgBusiness	15002297	CANVAS STUDIO FOR HAIR/ 668 HENDERSONVILLE RD. AT: B	Occurred On Fri 1/30 5:53AM	Charlie3	1			1
		15002303	KING'S KITCHEN/ 2270 HENDERSONVILLE RD. AT: A	Occurred Between Thu 1/29 9:30PM and Fri 8:00AM Span of 10hours 30minutes	Charlie5			1	1
02/02/15	BurgBusiness	2015001008	2603 HENDERSONVILLE RD	12hours 30minutes from Sat 1/31 8:30PM to Mon 2/2 9:00AM	InCounty		1		1
		2015001002	2610 HENDERSONVILLE RD	17hours 30minutes from Sat 1/31 3:00PM to Mon 2/2 8:30AM	InCounty		1		1
02/09/15	BurgBusiness	15003233	HONEYBAKED HAM/ 707 MERRIMON AVE	Occurred On Mon 2/9 9:02AM	Baker2			1	1
		15003236	HONEYBAKED HAM/ 707 MERRIMON AVE	Occurred On Mon 2/9 9:00AM	Baker2			1	1
02/16/15	BurgBusiness	15003886	THE PINK STORE/ 84 WALNUT ST	Occurred On Mon 2/16 11:21PM	Charlie1			1	1
02/24/15	BurgBusiness	15004455	ASH PANTRY/ 2 SWEETEN CREEK RD	Occurred On Tue 2/24 11:42PM	Charlie3			1	1
02/25/15	BurgBusiness	15004541	B AND B PHARMACY/ 462 HAYWOOD RD	Occurred Between Tue 2/24 11:25PM and Tue 11:30PM Span of 5minutes	Adam4			1	1
02/26/15	BurgBusiness	15004547	TOBACCO PLUS/ 6 EAGLE ST	Occurred On Thu 2/26 1:43AM	Charlie1			1	1
02/27/15	BurgBusiness	15004619	LIBERTY BICYCLE/ 1378 HENDERSONVILLE RD	Occurred On Fri 2/27 12:34AM	Charlie4			1	1
03/02/15	BurgBusiness	15004829	HAYWOOD LOUNGE/ 590 HAYWOOD RD	Occurred On Mon 3/2 1:09AM	Adam4			1	1
		15004832	RESTAURANT/ 258 BROADWAY ST	Occurred On Mon 3/2 3:49AM	Baker1			1	1
Grand Total						8	3	10	21

Ed Eads
Crime Analyst
Asheville Police Department
828 259-5883
eeads@ashevillenc.gov



Unfounded	RepDate	casenum1	OffenseCat	info
Legitimate	01-Feb-15	15002490	BurgBusiness	far right bottom window pane (if facing the business) to be broken out
Legitimate	02-Feb-15	15002533	BurgBusiness	there was a broken window to the business, with a broken golf club lying on the ground
Legitimate	08-Feb-15	15003173	BurgBusiness	Mr. Teich entered the Synagogue and located a broken window leading to the roof.
Legitimate	09-Feb-15	15003233	BurgBusiness	take photos of the broken glass from main door
Legitimate	09-Feb-15	15003236	BurgBusiness	took photos of the broken glass front door
Legitimate	10-Feb-15	15003366	BurgBusiness	appears that the point of entry was a broken window in the basement. Shattered glass was inside and outside the basement
Legitimate	10-Feb-15	15003392	BurgBusiness	An individual later identified as Jeffrey Burnette came out of a broken window at the back of the shed. Mr. Burnette had on a ski mask and latex gloves. Officers Humphrey and Greene placed Mr. Burnette under arrest.
Legitimate	13-Feb-15	15003595	BurgBusiness	golf club was left outside the building and that there was broken glass from the store front window
Legitimate	16-Feb-15	15003886	BurgBusiness	The front door glass had been busted out with a rock
Legitimate	24-Feb-15	15004455	BurgBusiness	front glass door of the store had been smashed in.
Legitimate	25-Feb-15	15004541	BurgBusiness	the front glass door to have been smashed.
Legitimate	26-Feb-15	15004547	BurgBusiness	suspect had used a brick to break the glass of the entrance door
Legitimate	27-Feb-15	15004619	BurgBusiness	glass in the front door had been shattered
Legitimate	02-Mar-15	15004829	BurgBusiness	saw a broken glass window on the front door
Legitimate	02-Mar-15	15004832	BurgBusiness	The front door of the business was glass and metal and had been shattered.
Legitimate	02-Feb-15	2015001002	BurgBusiness	suspect busted the glass to the back door

RepDate	OffenseCat	casenum1	address1	happened	Beat	Suspended	Closed	Open	Grand Total
02/01/15	BurgBusiness	15002490	HOBBY TOWN USA/ 800 FAIRVIEW RD. AT: EE	Occurred Between Sat 1/31 6:00PM and Sun 12:38PM Span of 18hours 38minutes	Baker3	1			1
02/02/15	BurgBusiness	2015001002	2610 HENDERSONVILLE RD	17hours 30minutes from Sat 1/31 3:00PM to Mon 2/2 8:30AM	InCount y		1		1
		15002533	YOUNGBLOOD BICYCLES INC/ 233 MERRIMON AVE	Occurred On Mon 2/2 2:42AM	Baker2			1	1
02/08/15	BurgBusiness	15003173	BETHISRAEL SYNAGOGUE/ 229 MURDOCK AVE	Occurred On Sun 2/8 6:11AM	Baker2	1			1
02/09/15	BurgBusiness	15003233	HONEYBAKED HAM/ 707 MERRIMON AVE	Occurred On Mon 2/9 9:02AM	Baker2			1	1
		15003236	HONEYBAKED HAM/ 707 MERRIMON AVE	Occurred On Mon 2/9 9:00AM	Baker2			1	1
02/10/15	BurgBusiness	15003366	17 BUCHANAN RD	Occurred On Tue 2/10 5:03PM	Baker4			1	1
		15003392	BLUE RIDGE RIDERS/ 887 TUNNEL RD	Occurred Between Tue 2/10 9:51PM and Tue 9:52PM Span of 1minutes	Baker3			1	1
02/13/15	BurgBusiness	15003595	YOUNGBLOOD BICYCLES INC/ 233 MERRIMON AVE	Occurred On Fri 2/13 5:16AM	Baker2			1	1
02/16/15	BurgBusiness	15003886	THE PINK STORE/ 84 WALNUT ST	Occurred On Mon 2/16 11:21PM	Charlie1			1	1
02/24/15	BurgBusiness	15004455	ASH PANTRY/ 2 SWEETEN CREEK RD	Occurred On Tue 2/24 11:42PM	Charlie3			1	1
02/25/15	BurgBusiness	15004541	B AND B PHARMACY/ 462 HAYWOOD RD	Occurred Between Tue 2/24 11:25PM and Tue 11:30PM Span of 5minutes	Adam4			1	1
02/26/15	BurgBusiness	15004547	TOBACCO PLUS/ 6 EAGLE ST	Occurred On Thu 2/26 1:43AM	Charlie1			1	1
02/27/15	BurgBusiness	15004619	LIBERTY BICYCLE/ 1378 HENDERSONVILLE RD	Occurred On Fri 2/27 12:34AM	Charlie4			1	1
03/02/15	BurgBusiness	15004829	HAYWOOD LOUNGE/ 690 HAYWOOD RD	Occurred On Mon 3/2 1:09AM	Adam4			1	1
		15004832	RESTAURANT/ 258 BROADWAY ST	Occurred On Mon 3/2 3:49AM	Baker1			1	1
Grand Total						2	1	13	16

From: Ed Eads

Sent: Tuesday, February 03, 2015 3:06 PM

To: Lt. Geoffrey Rollins

Subject: RE: glass break B&Es and drug store robberies

I looked in the narrative of Business B&Es for either "smash" / "glass" or "window" / "broken" and found the following 19 hits from 10/1/14. There was no strong geographic clusters, except mostly occurring along main roads. For whatever reason, only 18 of the 19 mapped.

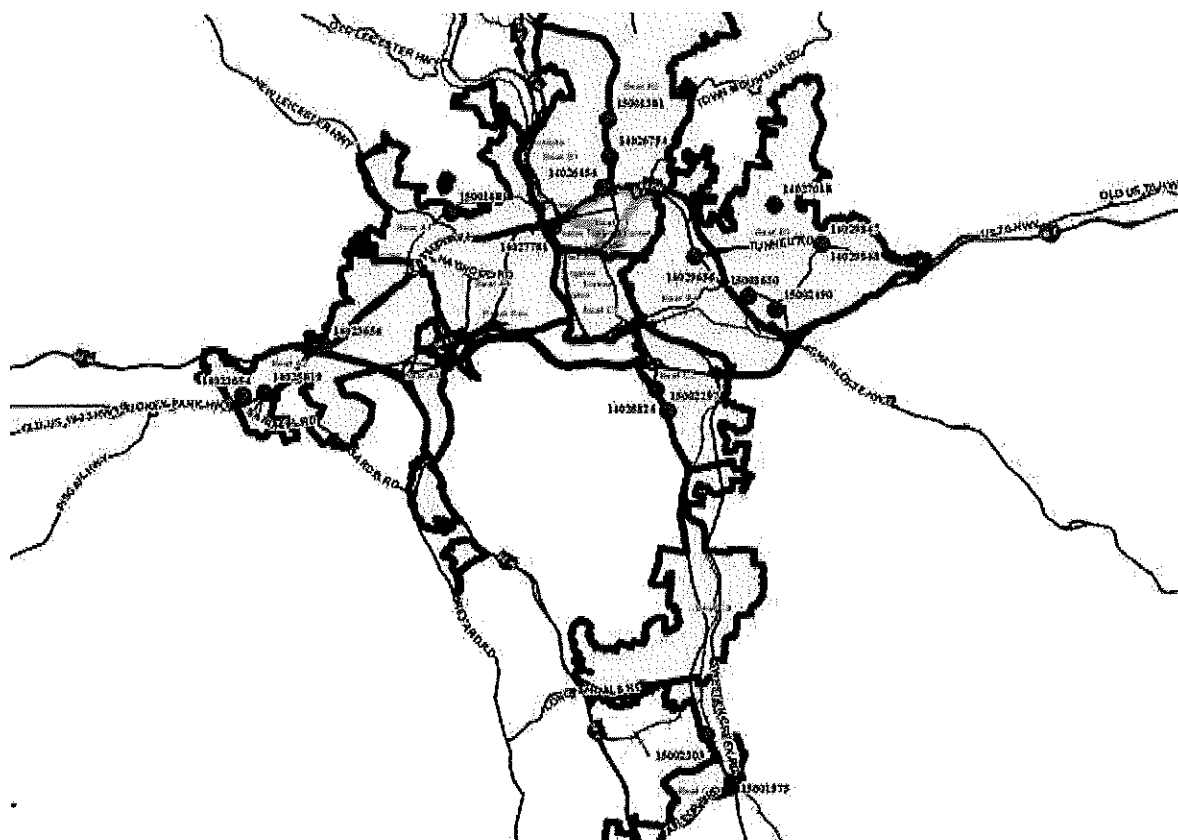
Based on Found/Secure times these show mostly on Wed and Fri early morning hours. Monday also but not as strong.

The attached pdf shows one case 15001681 with an arrest. Five other show suspect info. 14023654 14023656 14026754 15001650 15001681 indicate white male(s) based on LwNames and LwSuspect tables.

Day of Week / Time of Day.

14 of the 18 incidents, or 78%, had found/secure times within 12 hours.

Hour Range	1Mon	2Tue	3Wed	4Thu	5Fri	6Sat	7Sun	ByHour
00:00-03:00	7%	0%	13%	0%	7%	0%	0%	26%
03:00-06:00	3%	0%	13%	3%	10%	0%	0%	29%
06:00-09:00	3%	0%	13%	0%	8%	0%	0%	23%
09:00-12:00	0%	0%	0%	3%	0%	0%	0%	3%
12:00-15:00	0%	0%	0%	0%	0%	0%	0%	0%
15:00-18:00	0%	0%	0%	0%	0%	0%	0%	0%
18:00-21:00	0%	0%	0%	0%	0%	0%	0%	0%
21:00-24:00	0%	0%	3%	7%	3%	0%	6%	19%
ByDay	13%	0%	41%	13%	27%	0%	6%	100%



RepDate	casenum1	OffenseCat	info
10-Oct-14	14023654	BurgBusiness	drive through window smashed
10-Oct-14	14023656	BurgBusiness	threw chunk of cinder block through front window
05-Nov-14	14025819	BurgBusiness	glass in front door completely broken
13-Nov-14	14026454	BurgBusiness	window broke on west side of building
16-Nov-14	14026754	BurgBusiness	front windows of business had been shattered
20-Nov-14	14027018	BurgBusiness	broken window in kitchen area in basement of church
28-Nov-14	14027781	BurgBusiness	front door window had been broken
01-Dec-14	14027901	BurgBusiness	the right side of the front double door glass window pane was broken and pushed in
12-Dec-14	14028824	BurgBusiness	either kicked or body slammed the front door to knock the front door glass out
22-Dec-14	14029656	BurgBusiness	They used a large rock to break the glass on the lower part of the front glass door
24-Dec-14	14029847	BurgBusiness	front glass door broken out by a concrete block
24-Dec-14	14029848	BurgBusiness	front glass door smashed by a concrete block
19-Jan-15	15001381	BurgBusiness	Suspect smashed out the front door of the business using a cinder block
21-Jan-15	15001575	BurgBusiness	staff discovered a broken overhead window this morning
21-Jan-15	15001650	BurgBusiness	glass in the front door had been broken
22-Jan-15	15001681	BurgBusiness	one of the windows was broken out
30-Jan-15	15002297	BurgBusiness	the front door glass smashed
30-Jan-15	15002303	BurgBusiness	large rock had been thrown through his glass front door
01-Feb-15	15002490	BurgBusiness	I observed the far right bottom window pane (if facing the business) to be broken out.

RepDate	OffenseCat	casenum1	address1	happened	Beat	Suspended	Closed	Open	Grand Total
10/10/14	BurgBusiness	14023656	278 SMOKEY PARK HWY	Occurred Between Thu 10/9 9:30PM and Fri 7:39AM Span of 10hours 9minutes	Adam2		1		1
		14023654	901 SMOKEY PARK HWY. AT: STE 85	Occurred Between Fri 10/10 6:18AM and Fri 6:29AM Span of 11minutes	Adam2		1		1
11/05/14	BurgBusiness	14026819	877 SMOKEY PARK HWY	Occurred Between Wed 11/5 12:00AM and Wed 8:30AM Span of 8hours 30minutes	Adam2	1			1
11/13/14	BurgBusiness	14026454	STEEL GRAPHICS/ 17 CHERRY ST N	Occurred On Thu 11/13 5:38AM	Baker1	1			1
11/16/14	BurgBusiness	14026754	YOUNGBLOOD BICYCLES INC/ 233 MERRIMON AVE	Occurred Between Sun 11/16 11:40PM and Sun 11:41PM Span of 1minutes	Baker2	1			1
11/20/14	BurgBusiness	14027018	BETHESDA METHODIST/ 316 OLD HAW CREEK RD	Occurred Between Wed 11/19 8:00PM and Thu 9:40AM Span of 13hours 40minutes	Baker3	1			1
11/28/14	BurgBusiness	14027781	1 ROBERTS ST	Occurred Between Fri 11/28 10:00PM and Fri 10:55PM Span of 55minutes	Charlie 1			1	1
12/12/14	BurgBusiness	14028824	524 HENDERSONVILLE RD	Occurred Between Thu 12/11 8:00PM and Fri 10:00AM Span of 14hours	Charlie 3		1		1
12/22/14	BurgBusiness	14029656	MAJESTIC NAILS/ 273 TUNNEL RD	Occurred On Mon 12/22 1:41AM	Baker4	1			1
12/24/14	BurgBusiness	14029848	1070 TUNNEL RD	Occurred Between Wed 12/24 12:00AM and Wed 8:37AM Span of 8hours 37minutes	Baker3	1			1
		14029847	1070 TUNNEL RD	Occurred Between Wed 12/24 12:00AM and Wed 8:37AM Span of 8hours 37minutes	Baker3	1			1
01/19/15	BurgBusiness	15001381	YOLO/ 505 MERRIMON AVE	Occurred Between Sun 1/18 10:32PM and Mon 9:00AM Span of 10hours 28minutes	Baker2			1	1
01/21/15	BurgBusiness	15001575	ELENA'S MEXICAN GRILL/ 2424 HENDERSONVILLE RD	Occurred Between Tue 1/20 9:00PM and Wed 11:03AM Span of 14hours 3minutes	Charlie 5	1			1
		15001650	ASHEVILLE TOBACCO/ 152 BLEACHERY BLVD. AT: A	Occurred Between Wed 1/21 11:00PM and Wed 11:05PM Span of 5minutes	Baker3			1	1
01/22/15	BurgBusiness	15001681	CHURCH/ 479 HAZEL MILL RD	Occurred On Thu 1/22 10:54AM	Adam1			1	1
01/30/15	BurgBusiness	15002297	CANVAS STUDIO FOR HAIR/ 668 HENDERSONVILLE RD. AT: B	Occurred On Fri 1/30 5:53AM	Charlie 3			1	1
		15002303	KING'S KITCHEN/ 2270 HENDERSONVILLE RD. AT: A	Occurred Between Thu 1/29 9:30PM and Fri 8:00AM Span of 10hours 30minutes	Charlie 5			1	1
02/01/15	BurgBusiness	15002490	HOBBY TOWN USA/ 800 FAIRVIEW RD. AT: EE	Occurred Between Sat 1/31 6:00PM and Sun 12:38PM Span of 18hours 38minutes	Baker3			1	1
Grand Total						8	3	7	18

Ed Eads
Crime Analyst
Asheville Police Department
828 259-5883
eads@ashevillenc.gov

RepDate	OffenseCat	casenum1	address1	happened	Beat	Suspended	Open	Grand Total
02/22/15	BurgBusiness	15004269	1340 PATTON AVE. AT B	Occurred Between Sat 2/21 11:15PM and Sun 10:45AM Span of 11hours 30minutes	Adam4		1	1 X
		15004267	VESICA INSTITUTE/ 1011 TUNNEL RD	Occurred Between Sat 2/21 8:30PM and Sun 10:30AM Span of 14hours	Baker3		1	1 Z
		15004270	ASHEVILLE 12 STEP RECOVERY CLUB/ 1340 PATTON AVE. AT. A	Occurred Between Sat 2/21 11:15PM and Sun 8:40AM Span of 9hours 25minutes	Adam4		1	1 X
	BurgOther	15004260	DEVINE WINE AND BEER/ 1011 TUNNEL RD	Occurred On Sun 2/22 3:57AM	Baker3		1	1 Z
		15004261	1011 TUNNEL RD	Occurred Between Sat 2/21 11:00PM and Sun 7:00AM Span of 8hours	Baker3		1	1 Z
02/23/15	BurgBusiness	15004380	TRACTER SUPPLY/ 4 S TUNNEL RD	Occurred Between Mon 2/23 5:00PM and Mon 9:15PM Span of 4hours 15minutes	Baker4	1		1
		15004314	SALON DRAGONFLY/ 115 PATTON AVE	Occurred On Mon 2/23 7:35AM	Charlie 1		1	1 Y
		15004325	HEARNS CYCLING AND FITNESS/ 28 ASHELAND AVE	Occurred On Mon 2/23 10:31AM	Charlie 1		1	1 Y
	BurgOther	15004327	84 TOWN MOUNTAIN RD	Occurred Between Sun 2/22 6:00PM and Mon 10:14AM Span of 16hours 14minutes	Baker2		1	1
Grand Total						1	8	9

Day of Week / Time of Day.

... 7 of the 9 incidents, or 78%, had found/secure times within 12 hours.

Hour Range	1Mon	2Tue	3Wed	4Thu	5Fri	6Sat	7Sun	Byhour
00:00-03:00	0%	0%	0%	0%	0%	0%	19%	19%
03:00-06:00	0%	0%	0%	0%	0%	0%	25%	25%
06:00-09:00	6%	0%	0%	0%	0%	0%	14%	20%
09:00-12:00	6%	0%	0%	0%	0%	0%	3%	9%
12:00-15:00	0%	0%	0%	0%	0%	0%	0%	0%
15:00-18:00	4%	0%	0%	0%	0%	0%	0%	4%
18:00-21:00	12%	0%	0%	0%	0%	0%	0%	12%
21:00-24:00	4%	0%	0%	0%	0%	6%	0%	10%
ByDay	32%	0%	0%	0%	0%	6%	62%	100%

- Downtown
 - With 2 Burglary and 2 Graffiti on Mon 2/23

RepDate	OffenseCat	casenum1	address1	happened	Beat	Suspended	Open	Grand Total	
02/23/15	BurgBusiness	15004314	SALON DRAGONFLY/ 115 PATTON AVE	Occurred On Mon 2/23 7:35AM	Charlie1		1	1	
		15004325	HEARNS CYCLING AND FITNESS/ 28 ASHELAND AVE	Occurred On Mon 2/23 10:31AM	Charlie1		1	1	
	GraffitiNotGang	15004411	HANDY PARKING GARAGE/ 68 HAYWOOD ST	Occurred On Mon 2/23 1:15PM	Charlie1	1		1	
		15004410	WALL ST PARKING DECK/ 56 BATTERY PARK AVE	Occurred On Mon 2/23 1:30PM	Charlie1	1		1	
Grand Total							2	2	4

- Public Housing

- With 2 Aggravated Assaults in Hillcrest on Sat 2/21

RepDate	OffenseCat	casenum1	address1	happened	Beat	Open	Grand Total
02/21/15	Agg Assault	15004245	HILLCREST APTS/ 100 ATKINSON ST	Occurred On Sat 2/21 8:36PM	Baker1	1	1
		15004210	HILLCREST APTS/ 100 ATKINSON ST	Occurred On Sat 2/21 11:09AM	Baker1	1	1
Grand Total						2	2

- Adam14

- With 7 Simple Assault (average is 3.2 per week) during week from 2/16 to 2/22, 2 more on 2/23
 - 4 hits on Wed 2/18
 - Meadows / Deaverview / Pisgah View
 - See aFull_si1.pdf

RepDate	OffenseCat	casenum1	address1	happened	Beat	(blank)	Suspended	Closed	Open	Grand Total
02/18/15	Simple Assault	15004029	500 HAZEL MILL RD	Occurred On Wed 2/18 7:43PM	Adam1			1		1
		15004032	1100 LONGWOOD LN, AT: 108	Occurred Between Wed 2/18 8:00PM and Wed 8:38PM Span of 38minutes	Adam1		1			1
		15003974	PISGAH VIEW APTS/ 1 GRANADA ST	Occurred On Wed 2/18 9:14AM	Adam4		1			1
		15004017	MEADOWS APARTMENTS/ 99 ASCENSION DR, AT: H118	Occurred On Wed 2/18 4:20PM	Adam1			1		1
02/19/15	Simple Assault	15004061	MEADOWS APARTMENTS/ 99 ASCENSION DR	Occurred On Thu 2/19 1:56PM	Adam1			1		1
02/20/15	Simple Assault	15004159	APARTMENTS/ 99 ASCENSION DR, AT: 15H	Occurred Between Fri 2/20 7:36PM and Fri 7:37PM Span of 1minutes	Adam1	1				1
02/21/15	Simple Assault	15004244	DEAVERVIEW APARTMENTS/ 275 DEAVERVIEW RD, AT: 20D	Occurred On Sat 2/21 9:19PM	Adam1				1	1
02/23/15	Simple Assault	15004372	PISGAH VIEW APTS/ 1 GRANADA ST	Occurred On Mon 2/23 7:48PM	Adam4			1		1
		15004328	DEAVERVIEW APARTMENTS/ 275 DEAVERVIEW RD, AT: 15D	Occurred On Mon 2/23 10:00AM	Adam1			1		1
Grand Total						1	2	5	1	9

- Adam23
 - With no spike activity
- Baker12
 - With no spike activity
- Baker34
 - With 5 Shoplifting (average is 1.3 per day) on Sat 2/21

RepDate	OffenseCat	casenum1	address1	happened	Beat	Suspended	Closed	Open	Grand Total
02/21/15	Shoplifting	15004209	TARGET/ 115 RIVER HILLS RD	Occurred On Sat 2/21 12:37PM	Baker4	1			1
		15004232	WALMART SUPERCENTER/ 125 BLEACHERY BLVD	Occurred Between Sat 2/21 5:35PM and Sat 5:40PM Span of 5minutes	Baker3		1		1
		15004247	TARGET/ 115 RIVER HILLS RD	Occurred On Sat 2/21 9:08PM	Baker4		1		1
		15004212	AARONS/ 801 FAIRVIEW RD	Occurred On Sat 2/21 12:23PM	Baker3	1			1
		15004214	BLACK DOME MTN SHOP/ 140 TUNNEL RD	Occurred On Sat 2/21 2:05PM	Baker4			1	1
Grand Total						2	2	1	5

- Charlie12
 - With no spike activity
- Charlie3
 - With no spike activity

- Charlie45

- With 4 CarB&E (average is 1.1 per week) during week from 2/16 to 2/22
- This is a continuation from last week's activity in same area, with nearby county hits
- When combined with prior week's data, [REDACTED], only 6 of which had found / secure times within 12 hours – based on these 6 they tend to hit early Thursday and Friday mornings (see below).
- Beneath are the recent week's activity – and see aFull_carbe2.pdf, see Bulletin 1311 for prior week's activity

RepDate	OffenseCat	casenum1	address1	happened	Beat	Off	Grand Total
02/16/15	CarBandE_B	2015001476	35 SURREY RUN	Occurred Between Sun 2/15 6:30PM and Mon 5:30AM Span of 11hours	InCounty	1	1
	CarBandE_L	2015001478	148 TREETOPS LN	Occur time spans 365days 12hours 29minutes from Sat 2/15 7:30PM to Mon 2/16 7:59AM	InCounty	1	1
02/20/15	CarBandE_B	15004144	WLOS/ 110 TECHNOLOGY DR	Occurred Between Fri 2/20 4:30PM and Fri 4:55PM Span of 25minutes	Charlie4	1	1
	CarBandE_L	2015001550	84 PENSACOLA AVE	Occur time spans 2days 2hours from Mon 2/16 4:00PM to Wed 2/18 6:00PM	InCounty	1	1
		15004099	154 EDGEWOOD DR	Occurred Between Thu 2/19 9:00PM and Fri 5:00AM Span of 8hours	Charlie5	1	1
02/22/15	CarBandE_L	2015001590	105 HIBISCUS LN	Occur time spans 2days 1hours from Fri 2/20 2:00PM to Sun 2/22 3:00PM	InCounty	1	1
		15004263	5 HOLLY RIDGE DR	Occurred Between Sat 2/21 9:00PM and Sun 10:00AM Span of 13hours	Charlie4	1	1
		15004264	5 HOLLY RIDGE DR	Occurred Between Sat 2/21 9:00PM and Sun 10:00AM Span of 13hours	Charlie4	1	1
02/24/15	CarBandE_L	15004413	33 SPRING FOREST CIR	Occurred Between Mon 2/23 5:30PM and Tue 7:15AM Span of 13hours 45minutes	Charlie4	1	1
		15004412	35 SPRING FOREST CIR	Occurred Between Mon 2/23 5:30PM and Tue 7:15AM Span of 13hours 45minutes	Charlie4	1	1
Grand Total						10	10

Day of Week / Time of Day.


.. 6 of the 21 incidents, or 29%, had found/secure times within 12 hours.

Hour Range	1Mon	2Tue	3Wed	4Thu	5Fri	6Sat	7Sun	ByHour
00:00-03:00	5%	0%	0%	6%	16%	0%	0%	27%
03:00-06:00	5%	0%	0%	12%	13%	0%	0%	30%
06:00-09:00	0%	0%	0%	4%	3%	0%	0%	7%
09:00-12:00	0%	0%	0%	0%	0%	0%	0%	0%
12:00-15:00	0%	0%	0%	0%	0%	0%	0%	0%
15:00-18:00	0%	0%	0%	0%	6%	0%	0%	6%
18:00-21:00	0%	0%	0%	0%	0%	0%	5%	5%
21:00-24:00	0%	0%	6%	13%	0%	0%	5%	25%
ByDay	11%	0%	6%	36%	37%	0%	11%	100%

Ben Fulmer

From: eeads@ashevillenc.gov
Sent: Tuesday, February 17, 2015 5:55 PM
To: PoliceDistrictAWestSupervisors@ashevillenc.gov;
PoliceDistrictBNorth/EastSupervisors@ashevillenc.gov;
PoliceDistrictCSouth/CentralSupervisors@ashevillenc.gov
Cc: SBelcher@ashevillenc.gov; wwood@ashevillenc.gov; sgonce@ashevillenc.gov;
CReeceYoung@ashevillenc.gov; BGriffin@ashevillenc.gov; JStepp@ashevillenc.gov;
sridle@ashevillenc.gov; SHendricks@ashevillenc.gov;
CRIMINVESTSUPV@ashevillenc.gov; dromick@ashevillenc.gov;
kmcculloch@ashevillenc.gov; spruett@ashevillenc.gov; afowler@ashevillenc.gov;
forensics@ashevillenc.gov; PoliceLieutenants@ashevillenc.gov;
KSkonieczny@ashevillenc.gov; TBrigman@ashevillenc.gov; RJustus@ashevillenc.gov;
SDavis@ashevillenc.gov; LLovelace@ashevillenc.gov; CWells@ashevillenc.gov
Subject: Compstat Bulletin 1311
Attachments: TwoPlusWeeks_Adam.kmz; TwoPlusWeeks_Baker.kmz; TwoPlusWeeks_Charlie.kmz;
Weeks_1310_1311.kmz; BaseLayers.kmz; Other_1310_1311_1312Partial.kmz;
PublicHousing.kmz; Overview1311.pdf; PH_List2.pdf; A_List1.pdf; A_List2.pdf; B_List1.pdf;
B_List2.pdf; C_List1.pdf; C_List2.pdf; County_List1.pdf; County_List2.pdf; PH_List1.pdf

Dates below are when the event was reported unless otherwise noted. Recent week 1311 is Mon 2/9 to Sun 2/15/15. Info in this bulletin shows system info as of 2/17/15 AM.

 indicates a spike where at least some of the events are, based on counts, quite likely to be related.

Other listed events indicate above average activity.

- Citywide
 - With no spike activity
- Downtown
 - With no spike activity
- Public Housing
 - With no spike activity
- Adam14
 - With 5 Shoplifting (average is 0.7 per day) on Sun 2/15

RepDate	OffenseCat	casenum1	address1	happened	Beat	Suspended
02/15/15	Shoplifting	15003812	KMART BIG K/ 1001 PATTON AVE	Occurred On Sun 2/15 6:45PM	Adam1	
		15003807	BACKPACKER/ 52 WESTGATE PKWY	Occurred On Sun 2/15 4:15PM	Adam1	1
		15003788	KMART BIG K/ 1001 PATTON AVE	Occurred On Sun 2/15 10:31AM	Adam1	
		15003800	DOLLAR GENERAL/ 347 NEW LEICESTER HWY	Occurred On Sun 2/15 2:25PM	Adam1	
		15003804	KMART BIG K/ 1001 PATTON AVE	Occurred Between Sun 2/15 3:30PM and Sun 3:50PM Span of 20minutes	Adam1	
Grand Total						1

- Adam23
 - With no spike activity
- Baker12
 - With 6 Burglary (average is 2.1 per week) during week from 2/8 to 2/15, and 1 county hit
 - And see Bulletin 1308 (1/19 to 1/25) with above average activity (5 hits)

RepDate▼	OffenseCat▼	casenum1▼	address1▼	happened▼	Beat▼	Suspended
02/08/15	BurgBusiness	15003173	BETHISRAEL SYNAGOGUE/ 229 MURDOCK AVE	Occurred On Sun 2/8 6:11AM	Baker2	
02/09/15	BurgBusiness	15003233	HONEYBAKED HAM/ 707 MERRIMON AVE	Occurred On Mon 2/9 9:02AM	Baker2	
		15003236	HONEYBAKED HAM/ 707 MERRIMON AVE	Occurred On Mon 2/9 9:00AM	Baker2	
02/11/15	BurgResidence	2015001341	400 PATTON MOUNTAIN RD	Occur time spans 88days 2hours 10minutes from Sat 11/15 12:00PM to Wed 2/11 2:10PM	InCounty	
02/13/15	BurgBusiness	15003595	YOUNGBLOOD BICYCLES INC/ 233 MERRIMON AVE	Occurred On Fri 2/13 5:16AM	Baker2	
02/15/15	BurgResidence	15003819	ANSONIA APARTMENTS/ 289 E CHESTNUT ST	Occurred Between Sun 2/15 4:00PM and Sun 9:30PM Span of 5hours 30minutes	Baker2	
		15003805	APARTMENT HOUSE/ 5 GOLF ST, AT: 5B	Occurred On Sun 2/15 3:47PM	Baker2	
Grand Total						

For all Burglary activity from 1/19 to date in Baker12, the majority is occurring [REDACTED].

Day of Week / Time of Day.

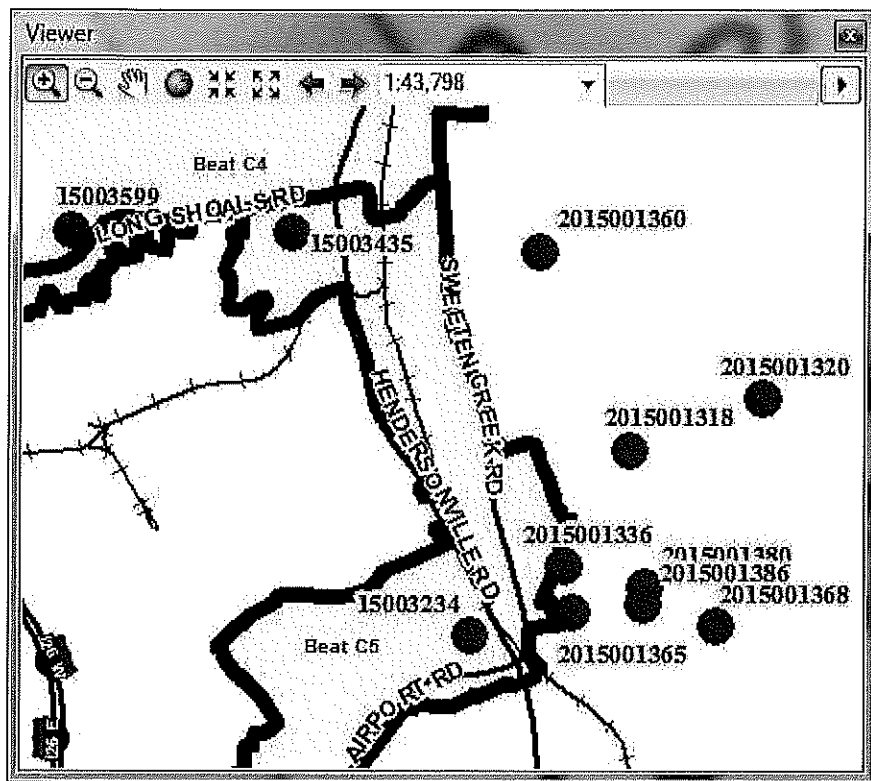
.. 13 of the 14 incidents, or 93%, had found/secure times within 12 hours.

Hour Range	1Mon	2Tue	3Wed	4Thu	5Fri	6Sat	7Sun	ByHour
00:00-03:00	10%	0%	0%	0%	0%	0%	0%	10%
03:00-06:00	5%	0%	0%	0%	5%	0%	0%	10%
06:00-09:00	5%	5%	5%	0%	0%	0%	5%	20%
09:00-12:00	10%	9%	0%	0%	0%	0%	0%	19%
12:00-15:00	0%	4%	0%	0%	0%	0%	0%	4%
15:00-18:00	0%	0%	0%	0%	0%	0%	11%	11%
18:00-21:00	0%	0%	0%	0%	0%	0%	9%	9%
21:00-24:00	0%	5%	0%	5%	0%	0%	6%	16%
ByDay	30%	24%	5%	5%	5%	0%	32%	100%

- Baker34
 - With no spike activity
- Charlie12
 - With no spike activity
- Charlie3
 - With 4 CarB&E (average is 1.2 every two weeks) during two weeks from 2/2 to 2/15 (p179)

RepDate	OffenseCat	casenum1	address1	happened	Beat	Suspended	Open	Grand Total
02/04/15	CarBandE_L	15002807	INGLES/ 780 HENDERSONVILLE RD	Occurred On Wed 2/4 10:10PM	Charlie 3		1	1
02/11/15	CarBandE_B	15003466	EXHAUST SPECIALTIES/ 124 SWEETEN CREEK RD	Occurred On Wed 2/11 3:39PM	Charlie 3	1		1
		15003487	BILTMORE VILLAGE/ 10 BROOK ST	Occurred Between Wed 2/11 3:30PM and Wed 7:30PM Span of 4hours	Charlie 3		1	1
02/12/15	CarBandE_L	15003570	BAYMONT INN/ 204 HENDERSONVILLE RD	Occurred On Thu 2/12 9:22PM	Charlie 3	1		1
Grand Total						2	2	4

- Charlie45
 - With [REDACTED] (average is 1.1 per week) during week from 2/9 to 2/15 (p258), yet also notice strong cluster of 8 just east of Charlie 5 in county. Several hits reported Wed 2/11 and Thu 2/12
 - See below – although only 4 of the 12 events had reliable found / secure times, these appear to have mostly occurred Tue night to Wed morning, and Wed night to Thu morning.
 - Footage and a print for one event, two suspects in another.



RepDate	OffenseCat	casenum1	address1	happened	Beat	Suspended	Open	Grand Total
02/09/15	CarBandE_L	15003234	BUCHANAN CONSTRUCTION/ 44 BUCK SHOALS RD	Occur time spans 2days 14hours 48minutes from Fri 2/6 6:00PM to Mon 2/9 8:48AM	Charlie5	1		1
02/11/15	CarBandE_L	2015001336	141 TAMPA BLVD	Occur time spans 1days 8hours from Sat 2/7 12:00AM to Sun 2/8 8:00AM	InCounty		1	1
		2015001318	196 WESTON RD	Occur time spans 1days 16hours 15minutes from Mon 2/9 3:00PM to Wed 2/11 7:15AM	InCounty		1	1
		15003435	2 MAPLE LN	Occurred Between Tue 2/10 5:00PM and Wed 11:00AM Span of 18hours	Charlie5		1	1
		2015001320	5 POINT VIEW CT	Occurred Between Tue 2/10 6:00PM and Wed 7:00AM Span of 13hours	InCounty		1	1
02/12/15	CarBandE_L	2015001380	25 PALATKA ST	Occur time spans 1days 1hours from Wed 2/11 10:00AM to Thu 2/12 11:00AM	InCounty		1	1
		2015001386	16 PALATKA ST	Occur time spans 1days 15hours from Wed 2/11 12:00AM to Thu 2/12 3:00PM	InCounty		1	1
		2015001368	9 TALL PINES TRL	Occurred Between Wed 2/11 9:30PM and Thu 7:30AM Span of 10hours	InCounty		1	1
		2015001360	86 TUCKAWAY DR	Occurred On Thu 2/12 3:14AM	InCounty		1	1
		2015001365	35 PENSACOLA AVE	Occurred Between Wed 2/11 7:30PM and Thu 7:30AM Span of 12hours	InCounty		1	1
02/13/15	CarBandE_B	15003599	607 CRANBROOK DR	Occurred Between Thu 2/12 10:30PM and Fri 7:00AM Span of 8hours 30minutes	Charlie4		1	1
	CarBandE_L	15003662	53 BRADDOCK WAY	Occurred Between Fri 2/13 8:30AM and Fri 10:51AM Span of 2hours 21minutes	Charlie4		1	1
Grand Total						1	11	12

Day of Week / Time of Day.

.. 4 of the 12 incidents, or 33%, had found/secure times within 12 hours.

Hour Range	1Mon	2Tue	3Wed	4Thu	5Fri	6Sat	7Sun	By Hour
00:00-03:00	0%	0%	0%	9%	11%	0%	0%	21%
03:00-06:00	0%	0%	0%	18%	11%	0%	0%	30%
06:00-09:00	0%	0%	0%	6%	11%	0%	0%	17%
09:00-12:00	0%	0%	0%	0%	15%	0%	0%	15%
12:00-15:00	0%	0%	0%	0%	0%	0%	0%	0%
15:00-18:00	0%	0%	0%	0%	0%	0%	0%	0%
18:00-21:00	0%	0%	0%	0%	0%	0%	0%	0%
21:00-24:00	0%	0%	9%	8%	0%	0%	0%	17%
By Day	0%	0%	9%	42%	49%	0%	0%	100%

- With 5 Vandalism (average is 2.3 every two weeks) during two weeks from 2/2 to 2/15

RepDate	OffenseCat	casenum1	address1	happened	Beat	Suspended	Open	Grand Total
02/02/15	Vandalism	15002592	CLARION INN/ 550 NEW AIRPORT RD	Occurred On Mon 2/2 8:56PM	Charlie 5		1	1
02/07/15	Vandalism	15003083	115 BRAESIDE CIR	Occurred Between Fri 2/6 9:00PM and Sat 7:45AM Span of 10hours 45minutes	Charlie 4		1	1
		15003095	SURVIVAL INNOVATIONS INC/ 59 BRADLEY BRANCH RD	Occurred Between Fri 2/6 10:00PM and Sat 12:06PM Span of 14hours 6minutes	Charlie 5	1		1
		15003096	SURVIVAL INNOVATIONS INC/ 63 BRADLEY BRANCH RD	Occurred Between Fri 2/6 10:00PM and Sat 12:55PM Span of 14hours 55minutes	Charlie 5		1	1
02/14/15	VandalismCar	15003742	418 CROWFIELDS DR	Occurred Between Fri 2/13 6:00PM and Sat 2:00PM Span of 20hours	Charlie 4		1	1
Grand Total						1	4	5

Ed Eads
 Crime Analyst
 Asheville Police Department
 NC 828 259-5883
eeads@ashevillenc.gov



Think Green! Please do not print this e-mail unless necessary

Confidentiality Notice: This email message, including any attachments, is for the sole use of the intended recipient(s) and may contain confidential and privileged information. Any unauthorized use, disclosure, or distribution is prohibited.


Ben Fulmer

From: eeads@ashevillenc.gov
Sent: Wednesday, June 10, 2015 6:28 PM
To: PoliceDistrictAWestSupervisors@ashevillenc.gov;
PoliceNorth/EastDistrictSupervisors@ashevillenc.gov;
PoliceSouth/CentralDistrictSupervisors@ashevillenc.gov
Cc: SBelcher@ashevillenc.gov; wwood@ashevillenc.gov; sgonce@ashevillenc.gov;
CReeceYoung@ashevillenc.gov; BGriffin@ashevillenc.gov; JStepp@ashevillenc.gov;
sriddle@ashevillenc.gov; SHendricks@ashevillenc.gov;
CRIMINVESTSUPV@ashevillenc.gov; dromick@ashevillenc.gov;
kmculloch@ashevillenc.gov; spruett@ashevillenc.gov; afowler@ashevillenc.gov;
forensics@ashevillenc.gov; PoliceLieutenants@ashevillenc.gov;
KSkonieczny@ashevillenc.gov; TBrigman@ashevillenc.gov; RJustus@ashevillenc.gov;
SDavis@ashevillenc.gov; LLoveLace@ashevillenc.gov; CWells@ashevillenc.gov
Subject: Compstat Bulletin 1327
Attachments: TwoPlusWeeks_Charlie.kmz; Overview_1327.pdf; TwoPlusWeeks_Adam.kmz;
TwoPlusWeeks_Baker.kmz

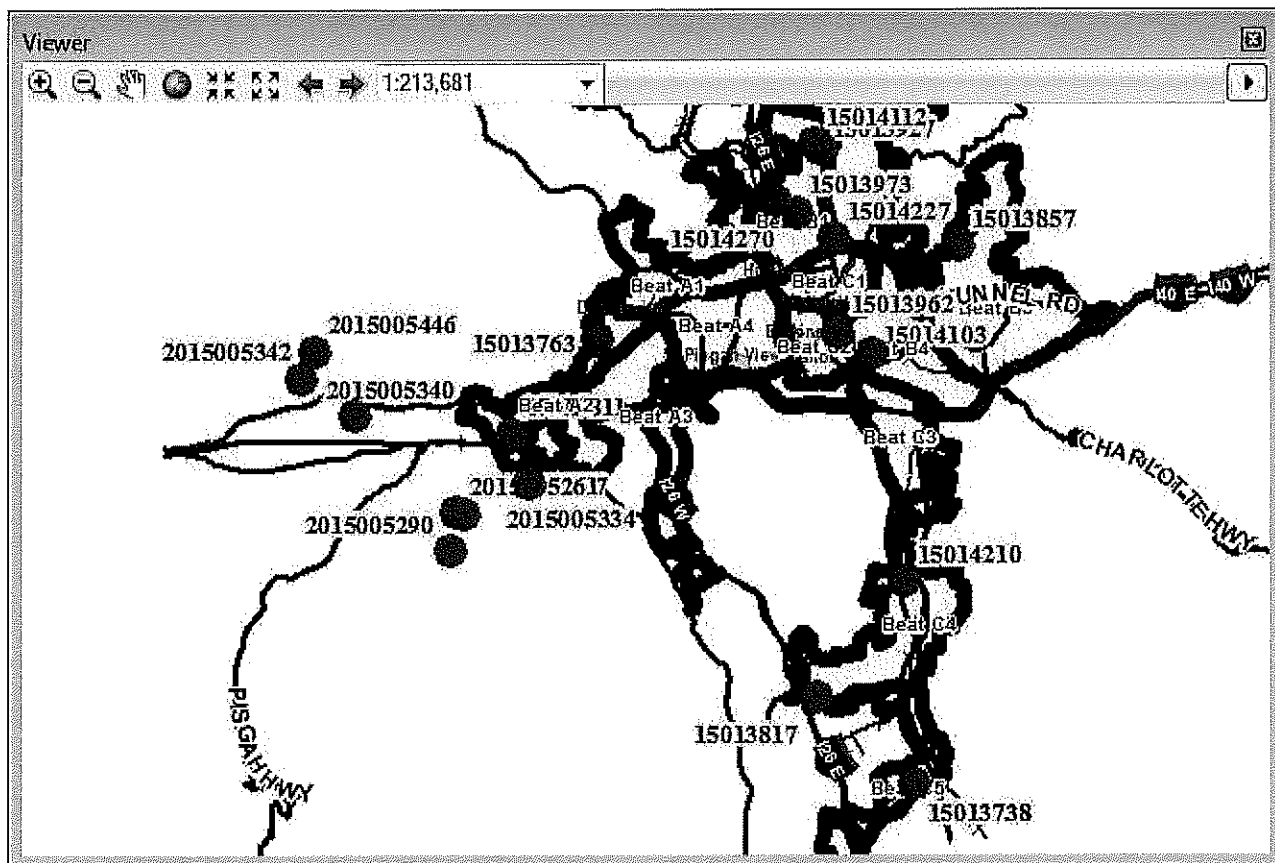
The g-drive now contains reference information at G:\APD\Compstat. Look for the folder named Bulletin1327.

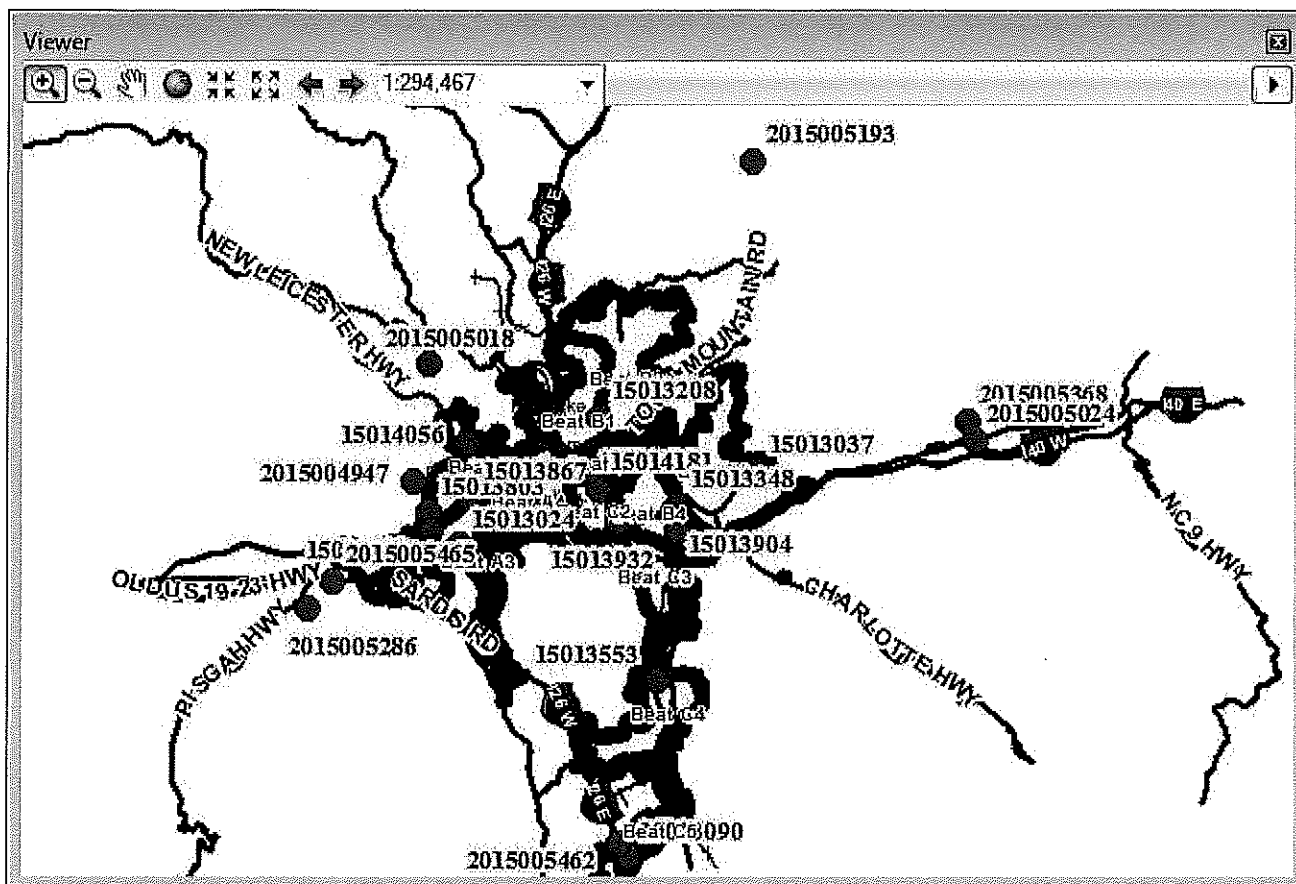
Dates below are when the event was reported unless otherwise noted. Info in this bulletin contains RMS system info as of early Wednesday morning 6/10/15.

	Week #	Mon	Tue	Wed	Thu	Fri	Sat	Sun
Prior Week	1326	5/25	5/26	5/27	5/28	5/29	5/30	5/31
Recent Week	1327	6/1	6/2	6/3	6/4	6/5	6/6	6/7
Current Week	1328	6/8	6/9	6/10	6/11	6/12	6/13	6/14

 indicates a spike where at least some of the events, based on counts, are quite likely to be related. Other listed events indicate above average activity.

- Citywide
 - Citywide. There were 15 Unlocked CarB&E's during the week from Mon 6/1 to Sun 6/7. We average 8.7 per week. In addition, several showed in the county, west of Adam district.
 - See G:\APD\Compstat\Bulletin1327\SpikeInfo\ "01" files.



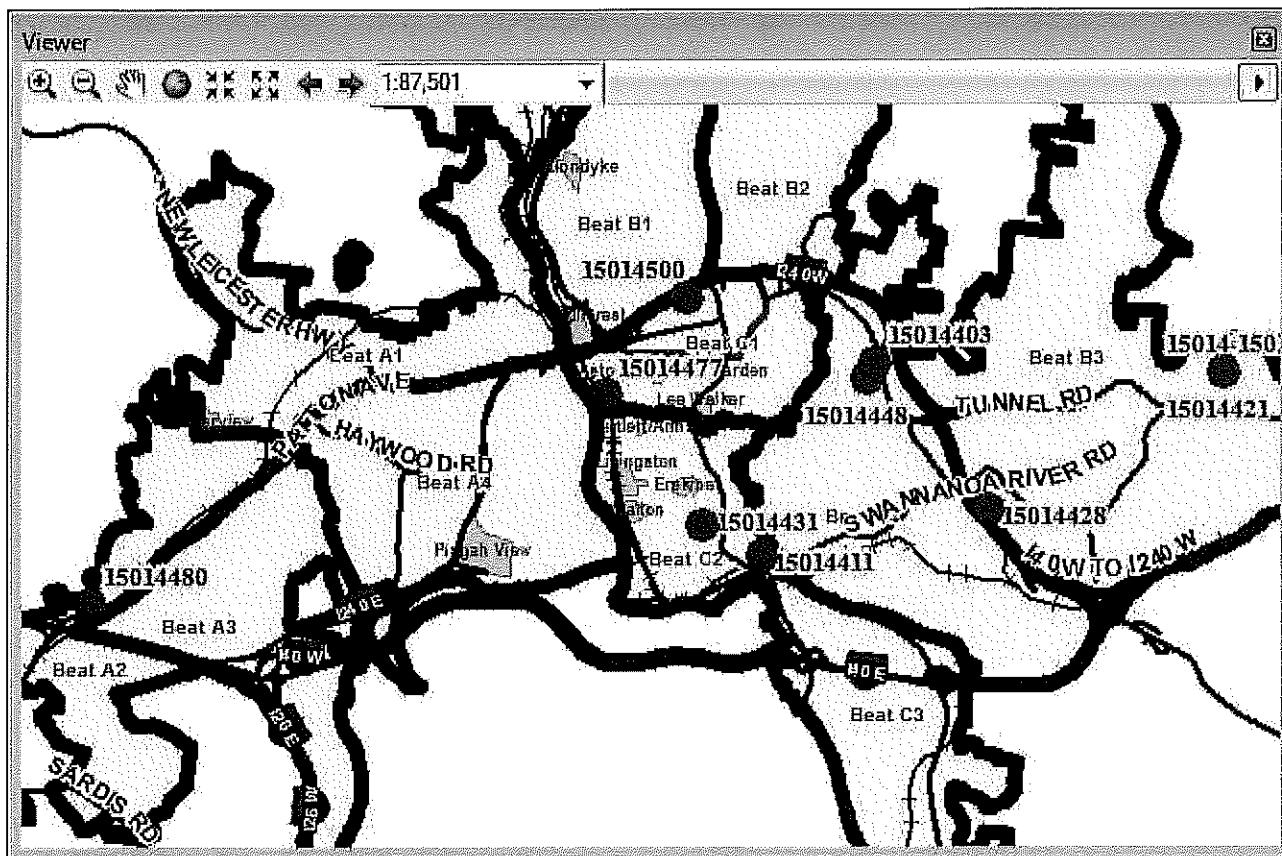


Day of Week / Time of Day.

...18 of the 22 incidents, or 82%, had found/secure times within 12 hours.

Hour Range	1Mon	2Tue	3Wed	4Thu	5Fri	6Sat	7Sun	ByHour
00:00-03:00	0%	3%	8%	0%	0%	0%	2%	12%
03:00-06:00	0%	3%	14%	0%	0%	0%	1%	18%
06:00-09:00	0%	2%	10%	0%	0%	3%	1%	16%
09:00-12:00	0%	2%	3%	0%	3%	0%	0%	8%
12:00-15:00	0%	1%	3%	2%	3%	0%	0%	9%
15:00-18:00	0%	4%	0%	5%	0%	0%	0%	9%
18:00-21:00	0%	1%	0%	3%	5%	2%	0%	11%
21:00-24:00	2%	3%	0%	4%	0%	8%	0%	17%
ByDay	2%	20%	37%	13%	11%	13%	4%	100%

- Citywide. [REDACTED]. We average 4.9 per day.
- See G:\APD\Compstat\Bulletin1327\SpikeInfo\ "03" files.



Day of Week / Time of Day.

...7 of the 12 incidents, or 58%, had found/secure times within 12 hours.

Hour Range	1Mon	2Tue	3Wed	4Thu	5Fri	6Sat	7Sun	ByHour
00:00-03:00	8%	0%	0%	0%	0%	0%	0%	8%
03:00-06:00	3%	0%	0%	0%	0%	0%	0%	3%
06:00-09:00	5%	0%	0%	0%	0%	0%	0%	5%
09:00-12:00	0%	0%	0%	0%	3%	0%	0%	3%
12:00-15:00	5%	0%	0%	0%	3%	15%	0%	22%
15:00-18:00	0%	0%	0%	0%	3%	40%	0%	42%
18:00-21:00	0%	0%	0%	0%	1%	0%	0%	1%
21:00-24:00	0%	0%	0%	0%	0%	0%	16%	16%
ByDay	21%	0%	0%	0%	8%	55%	16%	100%

- Downtown
 - Downtown. No spike activity.
- Public Housing
 - Public Housing. Deaverview and Aston Towers, combined, had a total of 7 Property Crimes during the week from Mon 6/1 to Sun 6/7. The average is 0.9 Property Crimes per week.
 - See G:\APD\Compstat\Bulletin1327\SpikeInfo\ "05" files.

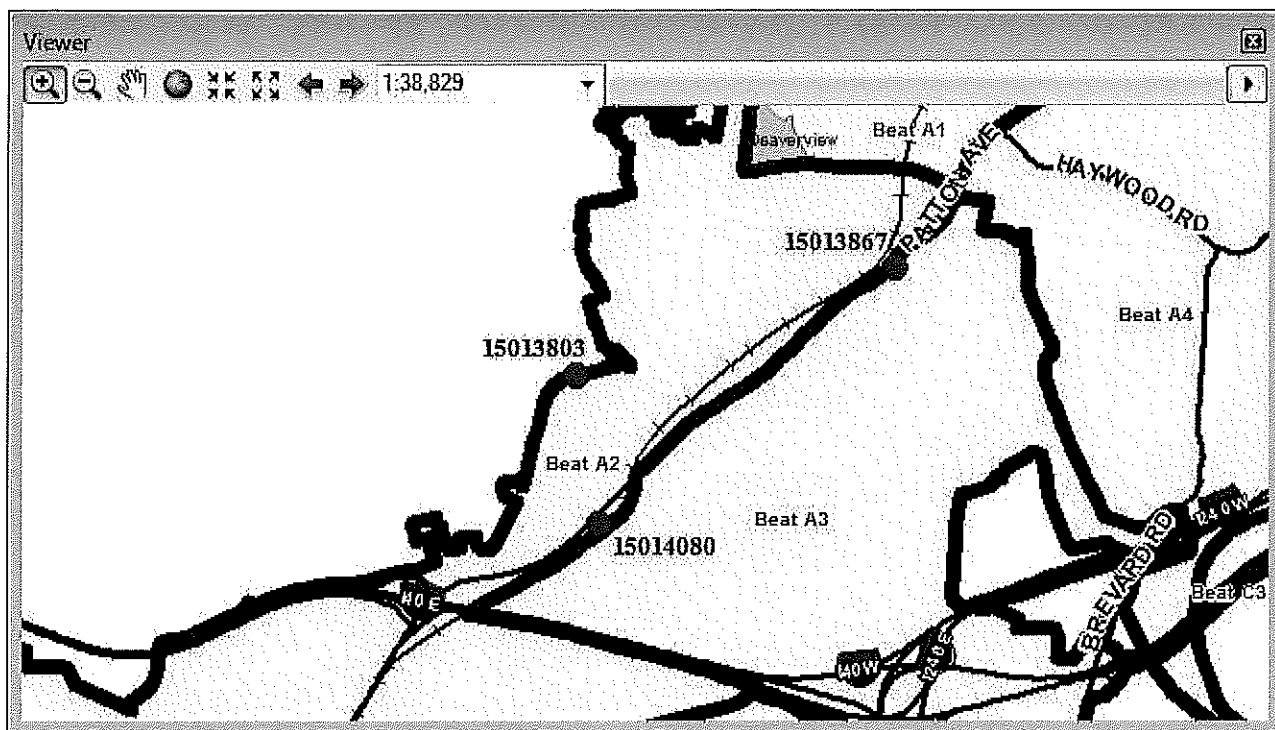
Day of Week / Time of Day.

...6 of the 7 incidents, or 86%, had found/secure times within 12 hours.

Hour Range	1Mon	2Tue	3Wed	4Thu	5Fri	6Sat	7Sun	ByHour
00:00-03:00	0%	0%	0%	13%	0%	0%	0%	13%
03:00-06:00	0%	6%	0%	0%	0%	0%	0%	6%
06:00-09:00	0%	6%	0%	0%	13%	0%	0%	19%
09:00-12:00	0%	10%	0%	0%	0%	0%	0%	10%
12:00-15:00	0%	10%	0%	0%	0%	0%	0%	10%
15:00-18:00	0%	0%	0%	0%	0%	0%	12%	12%
18:00-21:00	0%	0%	0%	0%	31%	0%	0%	31%
21:00-24:00	0%	0%	0%	0%	0%	0%	0%	0%
ByDay	0%	32%	0%	13%	43%	0%	12%	100%

RepDate	OffenseCat	casenum1	address1	happened	Beat	Suspended	Closed	Open	Grand Total
Mon 06/01/15	Vandalism	15013730	111 S FRENCH BROAD AVE	Occurred On Fri 5/29 6:30AM	Charlie1	1			1
Tue 06/02/15	BurgResidence	15013831	275 DEAVERVIEW RD, AT: 28A	Occurred Between Tue 6/2 7:40AM and Tue 2:24PM Span of 6hours 44minutes	Adam1		1		1
	Vandalism	15013783	275 DEAVERVIEW RD, AT: 11F	Occurred On Tue 6/2 3:48AM	Adam1		1		1
	BurgOther	15013813	165 S FRENCH BROAD AVE	Occur time spans 1days 9hours 4minutes from Mon 6/1 1:56AM to Tue 6/2 11:00AM	Charlie1			1	1
Thu 06/04/15	Larceny	15014015	165 S FRENCH BROAD AVE, AT: 1111	Occurred On Thu 6/4 2:01AM	Charlie1	1			1
Fri 06/05/15	StVeh_Car/SUV/Truck	15014241	165 S FRENCH BROAD AVE	Occurred Between Fri 6/5 6:30PM and Fri 8:48PM Span of 2hours 18minutes	Charlie1			1	1
Sun 06/07/15	CarBandE_L	15014382	275 DEAVERVIEW RD, AT: 11F	Occurred Between Sun 6/7 4:30PM and Sun 4:50PM Span of 20minutes	Adam1		1		1
Grand Total						2	3	2	7

- Adam1 and Adam4
 - Adam1 and Adam4. No spike activity.
- Adam2 and Adam3
 - Adam2 and Adam3. There were 4 Stolen Vehicles (Car/SUV/Truck) during the week from Mon 6/1 to Sun 6/7 (3 of these mapped). The average is 0.7 per week.
 - See Citywide information at G:\APD\Compstat\Bulletin1327\SpikeInfo\ "02" files.



Day of Week / Time of Day.

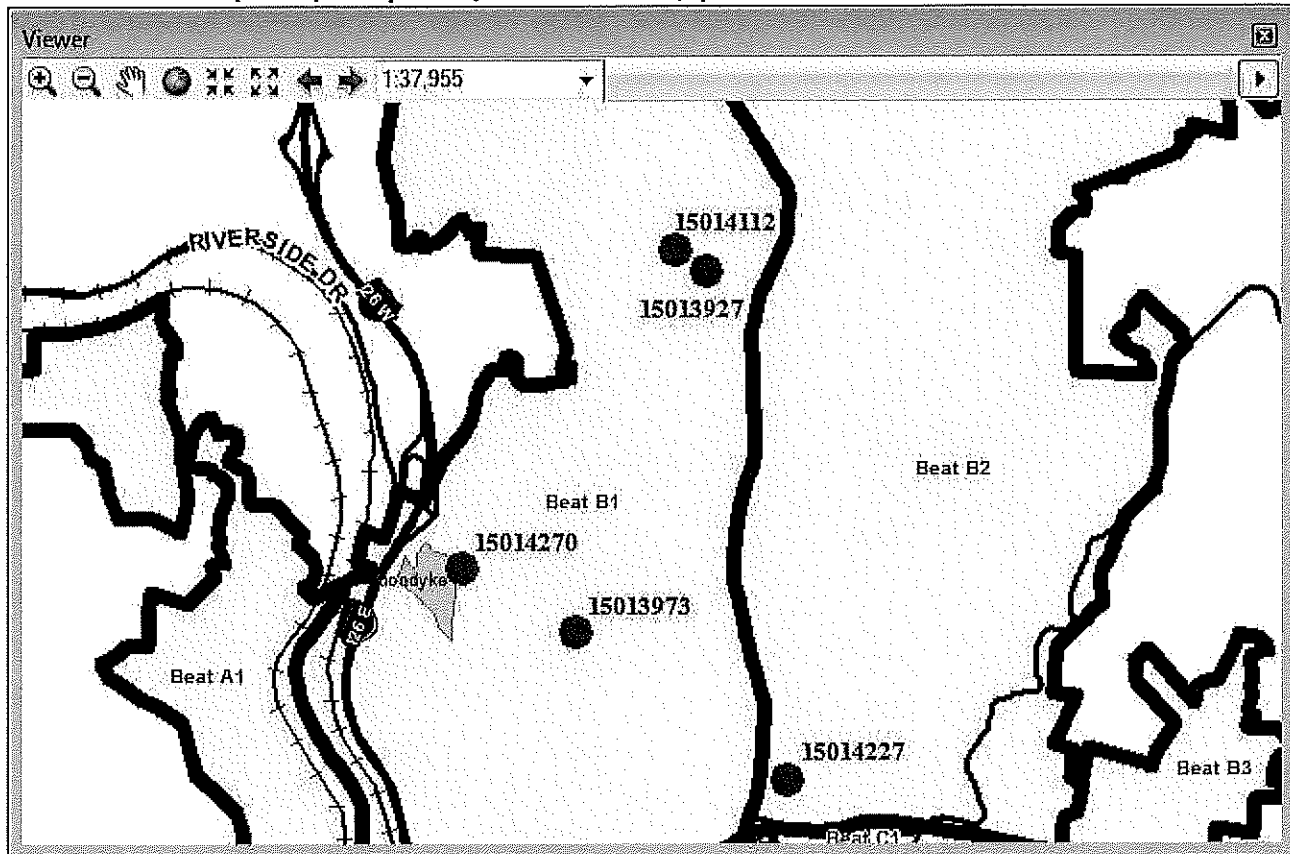
...3 of the 3 incidents, or 100%, had found/secure times within 12 hours.

Hour Range	1Mon	2Tue	3Wed	4Thu	5Fri	6Sat	7Sun	ByHour
00:00-03:00	0%	0%	0%	0%	0%	0%	0%	0%
03:00-06:00	0%	0%	0%	0%	0%	0%	0%	0%
06:00-09:00	0%	15%	0%	0%	0%	0%	0%	15%
09:00-12:00	0%	0%	0%	0%	0%	0%	0%	0%
12:00-15:00	0%	11%	0%	0%	0%	0%	0%	11%
15:00-18:00	0%	32%	0%	31%	0%	0%	0%	63%
18:00-21:00	0%	11%	0%	0%	0%	0%	0%	11%
21:00-24:00	0%	0%	0%	0%	0%	0%	0%	0%
ByDay	0%	69%	0%	31%	0%	0%	0%	100%

RepDate	OffenseCat	casenum1	address1	happened	Beat	Open	Grand Total
Tue 06/02/15	StVeh_Car/SUV/Truck	15013867	1520 PATTON AVE	Occurred Between Tue 6/2 2:30PM and Tue 6:20PM Span of 3hours 50minutes	Adam3	1	1
		15013803	1792 OLD HAYWOOD RD, AT: A	Occurred On Tue 6/2 8:49AM	Adam2	1	1
Thu 06/04/15	StVeh_Car/SUV/Truck	15014080	168 SMOKEY PARK HWY	Occurred On Thu 6/4 3:47PM	Adam2	1	1
Grand Total						3	3
15013024	710 SAND HILL RD	Occurred Between Mon 5/25 11:00PM and Tue 5:52AM Span of 5hours 52minutes			Adam3	1	1

- Baker1 and Baker2
 - Baker1 and Baker2. There were 5 Unlocked CarB&E's during the week from Mon 6/1 to Sun 6/7. The average is 0.9 per week.

- See above Citywide information and the G:\APD\Compstat\Bulletin1327\SpikeInfo\ "01" files.



Day of Week / Time of Day.

...2 of the 5 incidents, or 40%, had found/secure times within 12 hours.

Hour Range	1Mon	2Tue	3Wed	4Thu	5Fri	6Sat	7Sun	ByHour
00:00-03:00	0%	0%	0%	0%	0%	0%	0%	0%
03:00-06:00	0%	0%	0%	0%	0%	0%	0%	0%
06:00-09:00	0%	0%	0%	0%	0%	0%	0%	0%
09:00-12:00	0%	0%	0%	0%	0%	0%	0%	0%
12:00-15:00	0%	0%	0%	0%	0%	0%	0%	0%
15:00-18:00	0%	0%	41%	0%	15%	0%	0%	56%
18:00-21:00	0%	0%	0%	0%	44%	0%	0%	44%
21:00-24:00	0%	0%	0%	0%	0%	0%	0%	0%
ByDay	0%	0%	41%	0%	59%	0%	0%	100%

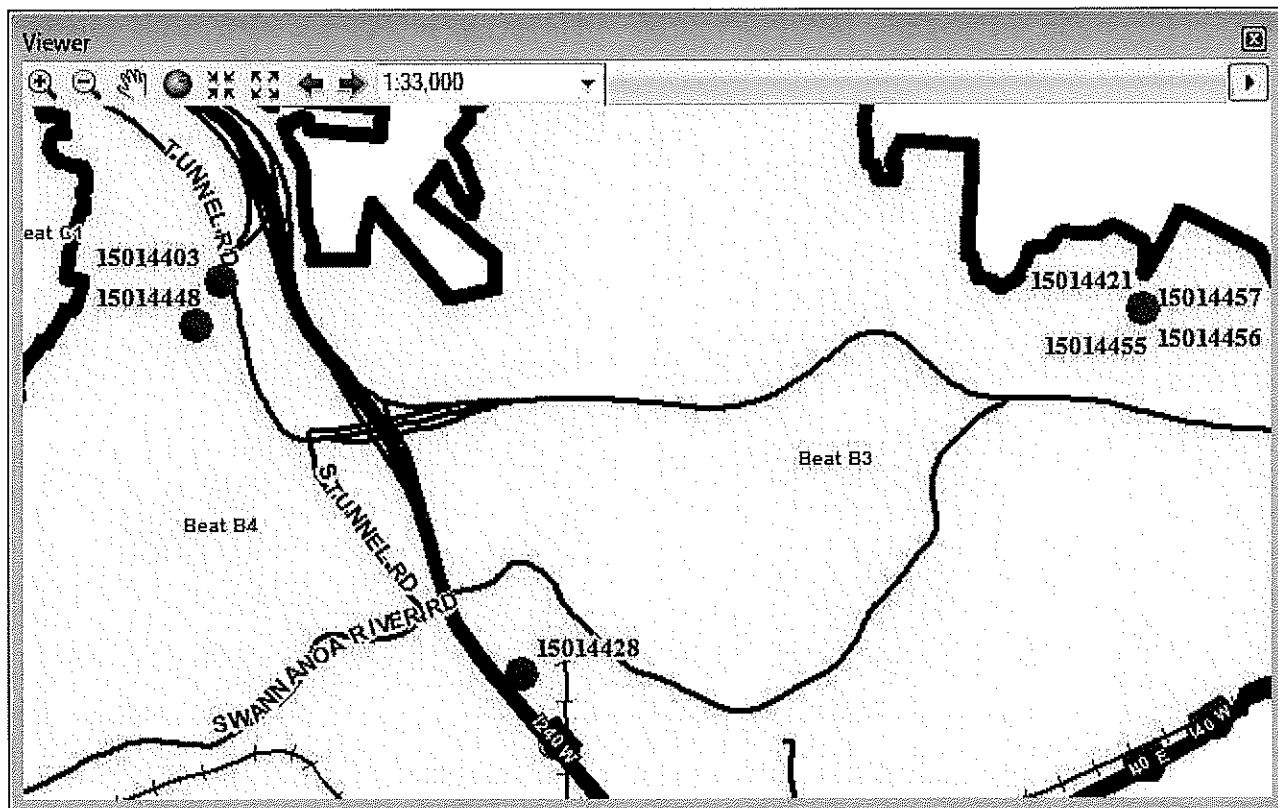
RepDate	OffenseCat	casenum1	address1	happened	Beat	Suspended	Open	Grand Total
Wed 06/03/15	CarBandE_L	15013927	152 CAMBRIDGE RD	Occurred Between Tue 6/2 4:00PM and Wed 7:00AM	Baker1		1	1
		15013973	480 BROADWAY ST/CATAWBA ST	Span of 15hours	Baker1		1	1
Thu 06/04/15	CarBandE_L	15014112	62 HORIZON HILL RD	Occurred On Wed 6/3 3:08PM	Baker1		1	1
				Occur time spans 1days 12hours from Tue 6/2 12:00AM to Wed 6/3 12:00PM	Baker1		1	1
Fri 06/05/15	CarBandE_L	15014227	215 S LIBERTY ST/MERRIMON PL	Occurred Between Fri 6/5 5:10PM and Fri 8:50PM	Baker2		1	1
				Span of 3hours 40minutes	Baker2		1	1
Sat 06/06/15	CarBandE_L	15014270	100 BULLDOG DR	Occurred Between Fri 6/5 5:30PM and Sat 9:45AM	Baker1		1	1
				Span of 16hours 15minutes	Baker1		1	1
Grand Total						1	4	5

- Baker3 and Baker4

- Baker3 and Baker4.

The average is 1.1 per day.

- Multiple events at 100 Riceville Rd
 - See Citywide information for G:\APD\Compstat\Bulletin1327\SpikeInfo\ "03" files.



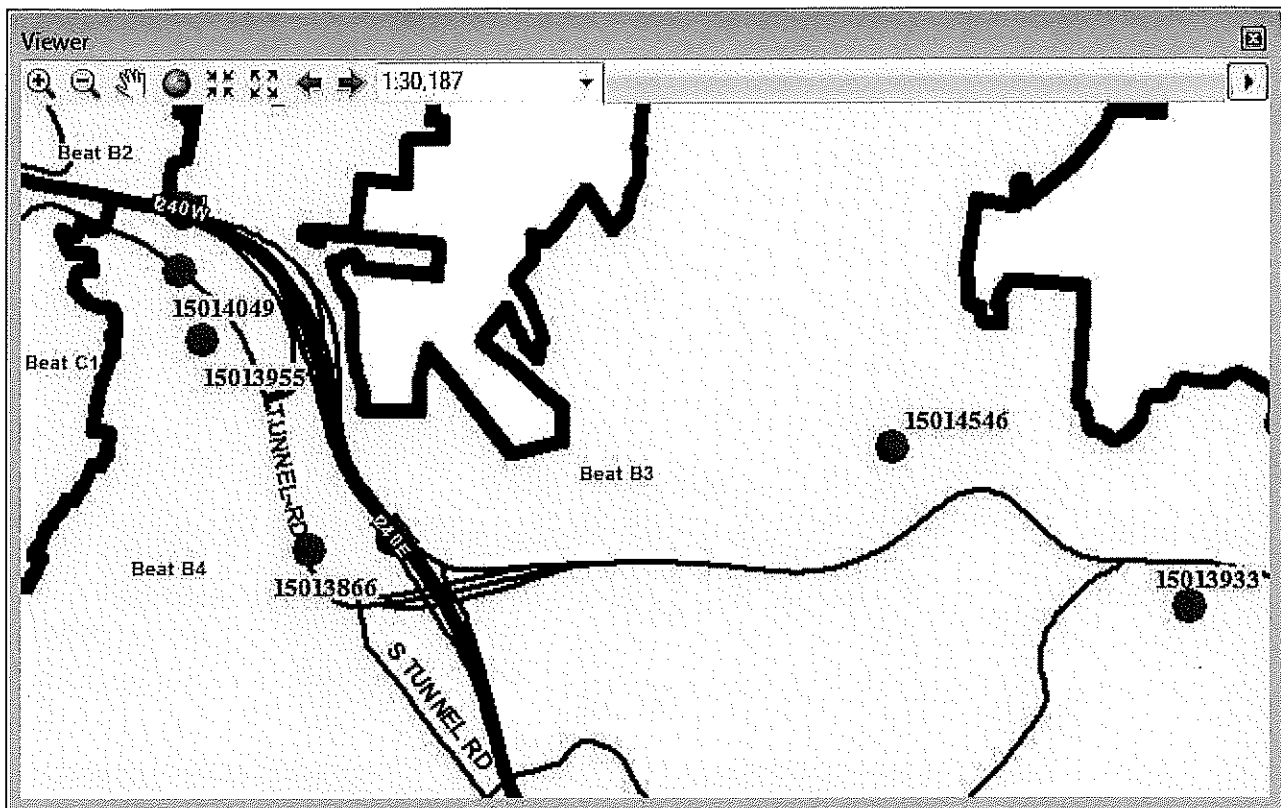
Day of Week / Time of Day.

...3 of the 7 incidents, or 43%, had found/secure times within 12 hours.

Hour Range	1Mon	2Tue	3Wed	4Thu	5Fri	6Sat	7Sun	ByHour
00:00-03:00	15%	0%	0%	0%	0%	0%	0%	15%
03:00-06:00	5%	0%	0%	0%	0%	0%	0%	5%
06:00-09:00	0%	0%	0%	0%	0%	0%	0%	0%
09:00-12:00	0%	0%	0%	0%	0%	0%	0%	0%
12:00-15:00	9%	0%	0%	0%	0%	27%	0%	36%
15:00-18:00	0%	0%	0%	0%	0%	0%	0%	0%
18:00-21:00	0%	0%	0%	0%	0%	0%	0%	0%
21:00-24:00	0%	0%	0%	0%	0%	0%	44%	44%
ByDay	29%	0%	0%	0%	0%	27%	44%	100%

RepDate	OffenseCat	casenum1	address1	happened	Beat	(blank) Suspended Open	Grand Total
Mon 06/08/15	Larceny	15014448	443 BEAUCATCHER RD	Occurred On Sat 6/6 12:55PM	Baker4	1	1
		15014456	100 RICEVILLE RD	Occur time spans 2days 4hours from Fri 6/5 12:00PM to Sun 6/7 4:00PM	Baker3	1	1
		15014457	100 RICEVILLE RD	Occur time spans 2days 4hours from Fri 6/5 12:00PM to Sun 6/7 4:00PM	Baker3	1	1
		15014421	100 RICEVILLE RD	Occur time spans 2days 4hours from Fri 6/5 12:00PM to Sun 6/7 4:00PM	Baker3	1	1
		15014455	100 RICEVILLE RD	Occur time spans 1days 4hours from Sat 6/6 12:00PM to Sun 6/7 4:00PM	Baker3	1	1
		15014403	141 TUNNEL RD	Occurred Between Sun 6/7 9:00PM and Mon 3:20AM Span of 6hours 20minutes	Baker4	1	1
		15014428	129 BLEACHERY BLVD	Occurred On Mon 6/8 12:20PM	Baker3	1	1
Grand Total						1 1 5	7

- Baker3 and Baker4. There were 4 Non-domestic Simple Assaults during the week from Mon 6/1 to Sun 6/7. The average is 1.5 per week.
- See Citywide information at G:\APD\Compstat\Bulletin1327\SpikeInfo\ "04" files.



Day of Week / Time of Day.

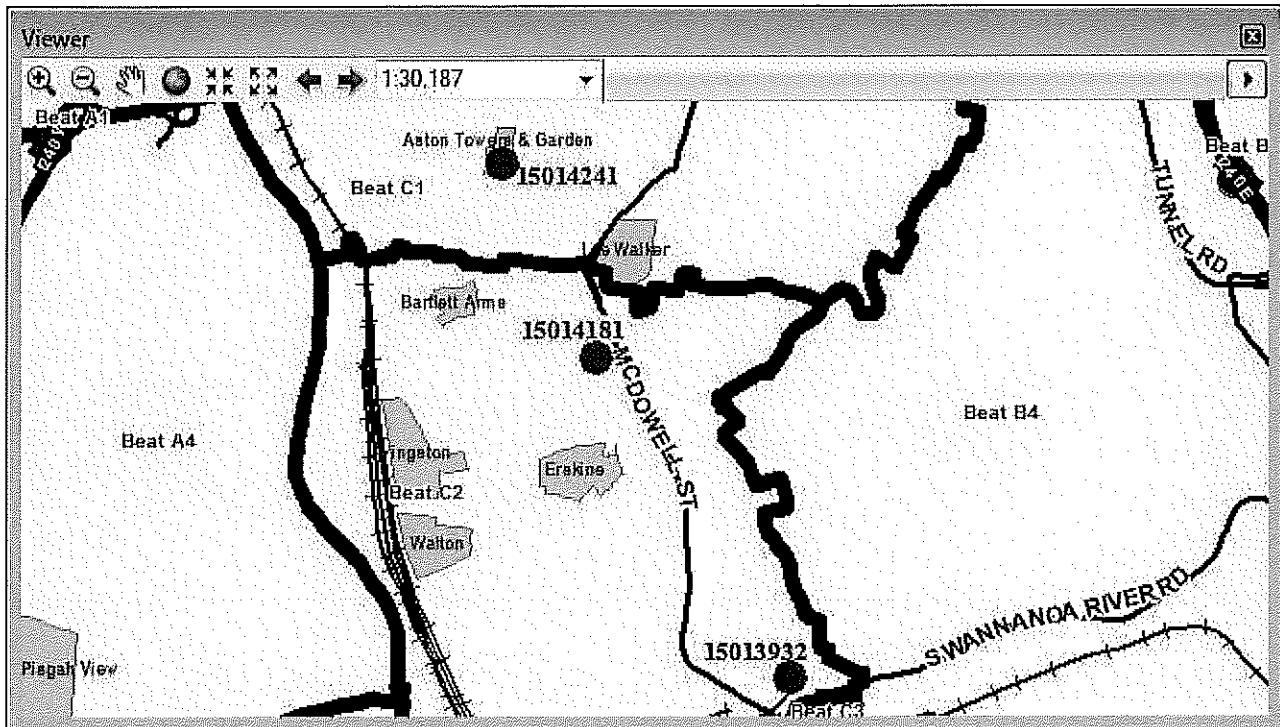
...5 of the 5 incidents, or 100%, had found/secure times within 12 hours.

Hour Range	1Mon	2Tue	3Wed	4Thu	5Fri	6Sat	7Sun	ByHour
00:00-03:00	0%	0%	0%	0%	0%	0%	0%	0%
03:00-06:00	0%	0%	0%	0%	0%	0%	0%	0%
06:00-09:00	0%	0%	0%	0%	0%	0%	0%	0%
09:00-12:00	0%	0%	14%	14%	0%	0%	0%	29%
12:00-15:00	0%	0%	0%	0%	0%	0%	0%	0%
15:00-18:00	0%	57%	14%	0%	0%	0%	0%	71%
18:00-21:00	0%	0%	0%	0%	0%	0%	0%	0%
21:00-24:00	0%	0%	0%	0%	0%	0%	0%	0%
ByDay	0%	57%	29%	14%	0%	0%	0%	100%

RepDate	OffenseCat	casenum1	address1	happened	Beat	(blank)	Closed	Open	Grand Total
Tue 06/02/15	Simple_NotDomestic	15013866	200 TUNNEL RD, AT 324	Occurred On Tue 6/2 5:24PM	Baker4			1	1
Wed 06/03/15	Simple_NotDomestic	15013955	85 TUNNEL RD	Occurred On Wed 6/3 3:15PM	Baker4		1		1
		15013933	1141 TUNNEL RD	11:32AM	Baker3		1		1
Thu 06/04/15	Simple_NotDomestic	15014049	58 TUNNEL RD	Occurred On Thu 6/4 10:26AM	Baker4		1		1
Tue 06/09/15	Simple_NotDomestic	15014546	519 HAW CREEK MEWS DR	Occurred On Tue 6/9 4:29PM	Baker3	1			1
Grand Total						1	3	1	5

- Charlie1 and Charlie2
 - Charlie1 and Charlie2. There were 3 Stolen Vehicles (Car/SUV/Truck) during the week from Mon 6/1 to Sun 6/7. The average is 0.5 per week.

- See Citywide information at G:\APD\Compstat\Bulletin1327\SpikeInfo\ "02" files.



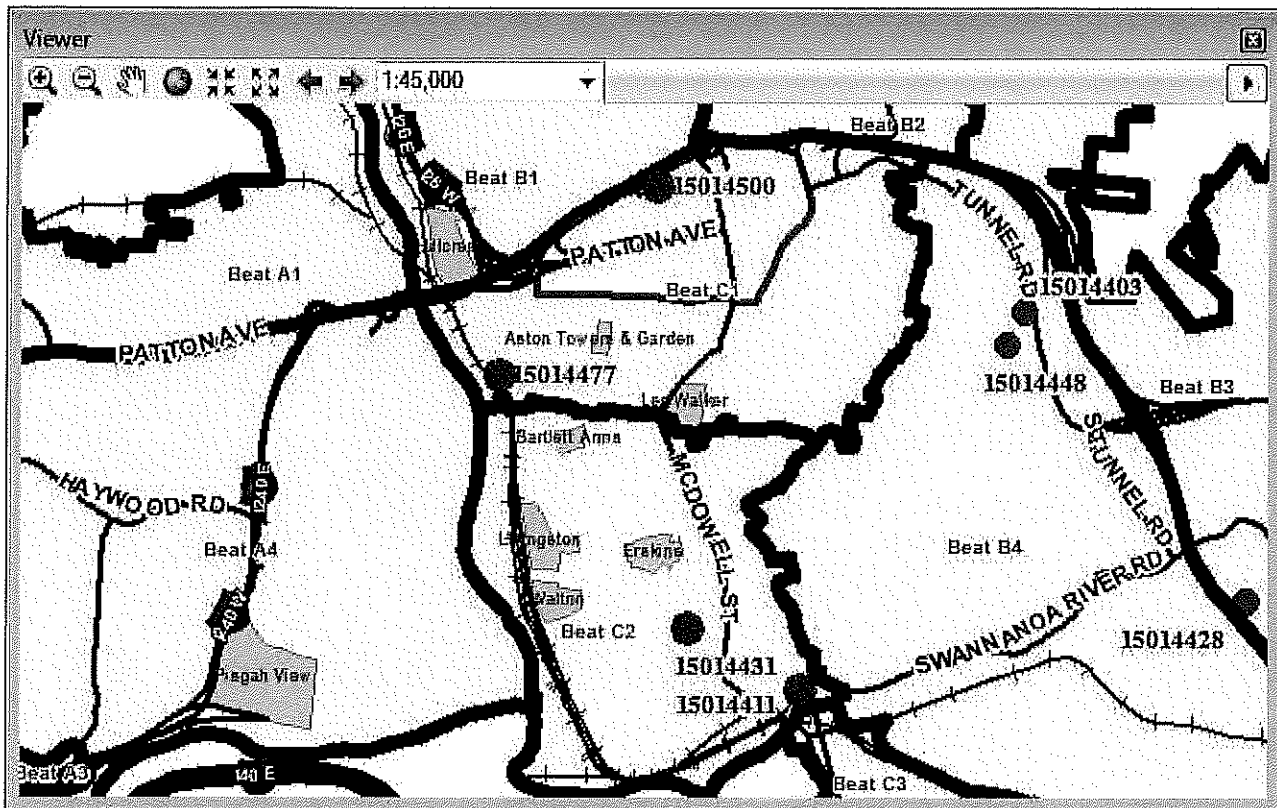
Day of Week / Time of Day.

...3 of the 3 incidents, or 100%, had found/secure times within 12 hours.

Hour Range	1Mon	2Tue	3Wed	4Thu	5Fri	6Sat	7Sun	ByHour
00:00-03:00	0%	0%	0%	0%	0%	0%	0%	0%
03:00-06:00	0%	0%	0%	0%	0%	0%	0%	0%
06:00-09:00	0%	0%	0%	0%	0%	0%	0%	0%
09:00-12:00	0%	0%	22%	0%	21%	0%	0%	43%
12:00-15:00	0%	0%	0%	0%	21%	0%	0%	21%
15:00-18:00	0%	0%	0%	0%	0%	0%	0%	0%
18:00-21:00	0%	0%	0%	0%	36%	0%	0%	36%
21:00-24:00	0%	0%	0%	0%	0%	0%	0%	0%
ByDay	0%	0%	22%	0%	78%	0%	0%	100%

RepDate	OffenseCat	casenum1	address1	happened	Beat	Suspended	Open	Grand Total	
Wed 06/03/15	SiVeh_Car/SUV/Truck	15013932	1 MEADOW RD	10:18AM	Charlie2		1	1	
Fri 06/05/15	SiVeh_Car/SUV/Truck	15014181	43 CHURCHILL ST	Occurred Between Fri 6/5 10:30AM and Fri 1:58PM Span of 3hours 28minutes	Charlie2	1		1	
		15014241	165 S FRENCH BROAD AVE	Occurred Between Fri 6/5 6:30PM and Fri 8:48PM Span of 2hours 18minutes	Charlie1		1	1	
Grand Total							1	2	3

- Charlie1 and Charlie2. There were 4 Larceny-Other incidents reported on Mon 6/8. The average is 0.9 per day.
- See Citywide information for G:\APD\Compstat\Bulletin1327\SpikeInfo\ "03" files.



Day of Week / Time of Day.

...3 of the 4 incidents, or 75%, had found/secure times within 12 hours.

Hour Range	1Mon	2Tue	3Wed	4Thu	5Fri	6Sat	7Sun	ByHour
00:00-03:00	0%	0%	0%	0%	0%	0%	0%	0%
03:00-06:00	0%	0%	0%	0%	0%	0%	0%	0%
06:00-09:00	16%	0%	0%	0%	0%	0%	0%	16%
09:00-12:00	0%	0%	0%	0%	0%	0%	0%	0%
12:00-15:00	0%	0%	0%	0%	0%	0%	0%	0%
15:00-18:00	0%	0%	0%	0%	0%	84%	0%	84%
18:00-21:00	0%	0%	0%	0%	0%	0%	0%	0%
21:00-24:00	0%	0%	0%	0%	0%	0%	0%	0%
ByDay	16%	0%	0%	0%	0%	84%	0%	100%

RepDate	OffenseCat	casenum1	address1	happened	Beat	Suspended	Open	Grand Total
Mon 06/08/15	Larceny	15014500	97 HAYWOOD ST	Occurred Between Sat 6/6 5:00PM and Sat 6:00PM Span of 1hours	Charlie1	1		1
		15014477	37 PAYNES WAY	Occurred Between Sat 6/6 3:00PM and Sat 4:30PM Span of 1hours 30minutes	Charlie1		1	1
		15014431	419 MCDOWELL ST	Occur time spans 2days 22hours 14minutes from Fri 6/5 3:30PM to Mon 6/8 1:44PM	Charlie2		1	1
		15014411	779 BILTMORE AVE	Occurred On Mon 6/8 8:00AM	Charlie2		1	1
Grand Total						1	3	4

- Charlie3
 - Charlie3. No spike activity.
- Charlie4 and Charlie5
 - Charlie4 and Charlie5. No spike activity.

Ed Eads
 Crime Analyst
 Asheville Police Department
 828 259-5883
eeads@ashevillenc.gov



Think Green! Please do not print this e-mail unless necessary

Confidentiality Notice: This email message, including any attachments, is for the sole use of the intended recipient(s) and may contain confidential and privileged information. Any unauthorized use, disclosure, or distribution is prohibited.