

Ben Fulmer

From: TJones2@ashevillenc.gov
Sent: Friday, August 05, 2016 3:45 PM
To: drptopjeep@gmail.com
Subject: FW: UPDATE - APD Requests Public Assistance Identifying Robbery Suspect
Attachments: 1.jpg; 2.jpg; 3.jpg; 4.jpg

From: Christina Hallingse
Sent: Friday, August 05, 2016 3:44:51 PM (UTC-05:00) Eastern Time (US & Canada)
Subject: UPDATE - APD Requests Public Assistance Identifying Robbery Suspect

UPDATE – FOR IMMEDIATE RELEASE

**City of Asheville
Asheville Police Department**

(August 5, 2016): The Asheville Police Department has identified a vehicle of interest in the robbery that occurred on August 4, 2016 at SunTrust Bank (700 Haywood Road). The suspect is believed to have utilized an older model, white Chevrolet pickup truck. The truck is equipped with a white camper top that covers the bed. The back right window of the camper top has a white covering over the back half and a white sticker is displayed in the bottom center of the camper's rear window.

If anyone has any information regarding the identity of the vehicle's owner or the current location of this vehicle they are encouraged to contact the Asheville Police Department at (828) 252-1110 or Buncombe County Crime Stoppers at (828) 255-5050.

Thank you,

Christina Hallingse
Public Information Officer
Asheville Police Department
Office: (828) 259-5881
Cell: (828) 230-4471

From: Christina Hallingse
Sent: Thursday, August 04, 2016 19:39 PM
Subject: PRESS RELEASE - APD Requests Public Assistance Identifying Robbery Suspect

FOR IMMEDIATE RELEASE

**City of Asheville
Asheville Police Department**

Asheville Police Department Requests Public Assistance Identifying Robbery Suspect

Asheville, NC (August 4, 2016): At approximately 5:00 p.m. the Asheville Police Department responded to a report of a robbery at SunTrust Bank, 700 Haywood Road. The suspect entered the bank and demanded payment in large bills. He did not display a weapon and fled the scene on foot.

The suspect is described as a white male dressed in blue jean overalls, a gray shirt and wearing work gloves, a black scarf wrapped around his face and aviator sunglasses.

If anyone has any information regarding the identity of the suspect they are encouraged to contact the Asheville Police Department at (828) 252-1110 or Buncombe County Crime Stoppers at (828) 255-5050.

###

For more information, please contact:
Christina Hallingse
Public Information Officer
Asheville Police Department
Office: (828) 259-5881
Cell: (828) 230-4471


Ben Fulmer

From: eeads@ashevillenc.gov
Sent: Wednesday, August 12, 2015 6:00 PM
To: PoliceDistrictAWestSupervisors@ashevillenc.gov;
PoliceNorth/EastDistrictSupervisors@ashevillenc.gov;
PoliceSouth/CentralDistrictSupervisors@ashevillenc.gov
Cc: THooper@ashevillenc.gov; SBelcher@ashevillenc.gov; wwood@ashevillenc.gov;
sgonce@ashevillenc.gov; CReeceYoung@ashevillenc.gov; BGriffin@ashevillenc.gov;
JStepp@ashevillenc.gov; sriddle@ashevillenc.gov; SHendricks@ashevillenc.gov;
CRIMINVESTSUPV@ashevillenc.gov; dromick@ashevillenc.gov;
kmcculloch@ashevillenc.gov; spruett@ashevillenc.gov; afowler@ashevillenc.gov;
forensics@ashevillenc.gov; PoliceLieutenants@ashevillenc.gov;
KSkonieczny@ashevillenc.gov; TBrigman@ashevillenc.gov; RJustus@ashevillenc.gov;
SDavis@ashevillenc.gov; LLoveLace@ashevillenc.gov; CWells@ashevillenc.gov;
HSilberman@ashevillenc.gov
Subject: Compstat Bulletin 1336
Attachments: Overview_1336.pdf; TwoPlusWeeks_Adam.kmz; TwoPlusWeeks_Baker.kmz;
TwoPlusWeeks_Charlie.kmz

The G-drive now contains reference information at G:\APD\Compstat. Look for the folder named Bulletin1336.

Dates below are when the event was reported unless otherwise noted. Info in this bulletin contains RMS system info as of early Wednesday morning 8/12/15.

	Week #	Mon	Tue	Wed	Thu	Fri	Sat	Sun
Prior Week	1335	7/27	7/28	7/29	7/30	7/31	8/1	8/2
Recent Week	1336	8/3	8/4	8/5	8/6	8/7	8/8	8/9
Current Week	1337	8/10	8/11	8/12	8/13	8/14	8/15	8/16

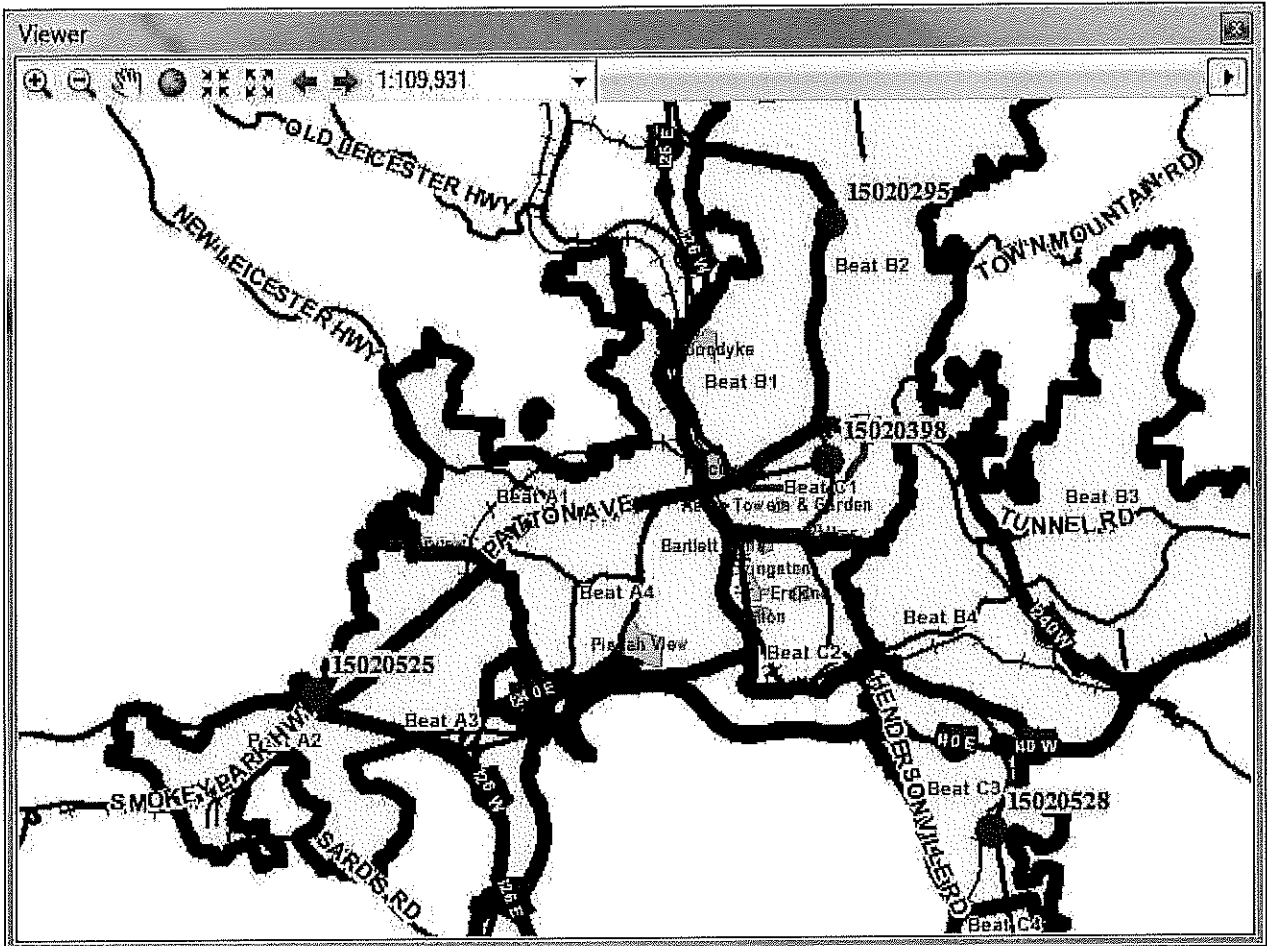
 indicates a spike where at least some of the events, based on counts, are quite likely to have a similar cause.

Other listed events simply indicate above average activity and may or may not be related.

- Citywide
 - Citywide. There were 2 Armed Robbery reported on Sat 8/8, then 2 more reported on Mon 8/10.
 - Sat 8/8. 15020295. W/M on moped, t-shirt, blue jeans. 6 ft tall, wearing white black helmet, scabs up and down arms and hands.
 - Sat 8/8. 15020398. Green Bronco with thirty day tag. 3 B/M and one Caucasian man.

- Mon 8/10. 15020525. Male with knife. W/M dark clothing, short, skinny. Got in dark colored smaller car. 'Surveillance shows the suspect as a white male with a shaved head with short black hair. Suspect is wearing a cloth mask around his mouth and nose and has a black jacket with a light blue undershirt and blue jeans. The suspect was carrying a dark hunting style knife.'
- Mon 8/10. 15020528. 'white male walked in the door. Mr. Mitchell stated that the suspect was about six feet tall with a thin build, and wearing a black jacket, navy blue sweat pants and his face was covered with a white material similar to long johns'
- See G:\APD\Compstat\Bulletin1336\SikeInfo\ "02" files.

RepDate	OffenseC	casenum1	address1	happened	Beat	Clos ed	Op en	Gr an d Tot al
Sat 08/08/15	RobbArm ed	15020295	MAN VERS APE/ 855 MERRIMON AVE	Occurred Between Fri 8/7 9:20AM and Fri 9:30AM Span of 10minutes	Baker2		1	1
		15020398	VANCE MONUMENT/ 1 S PACK SQ	Occurred On Sat 8/8 1:32AM	Charlie1	1		1
Mon 08/10/15	RobbArm ed	15020525	ROADRUNNER MARKET #150/ 295 SMOKEY PARK HWY	Occurred On Mon 8/10 12:14AM	Adam2		1	1
		15020528	RL JORDON HOT SPOT/ 1069 SWEETEN CREEK RD	Occurred Between Mon 8/10 2:54AM and Mon 2:58AM Span of 4minutes	Charlie3		1	1
Grand Total						1	3	4

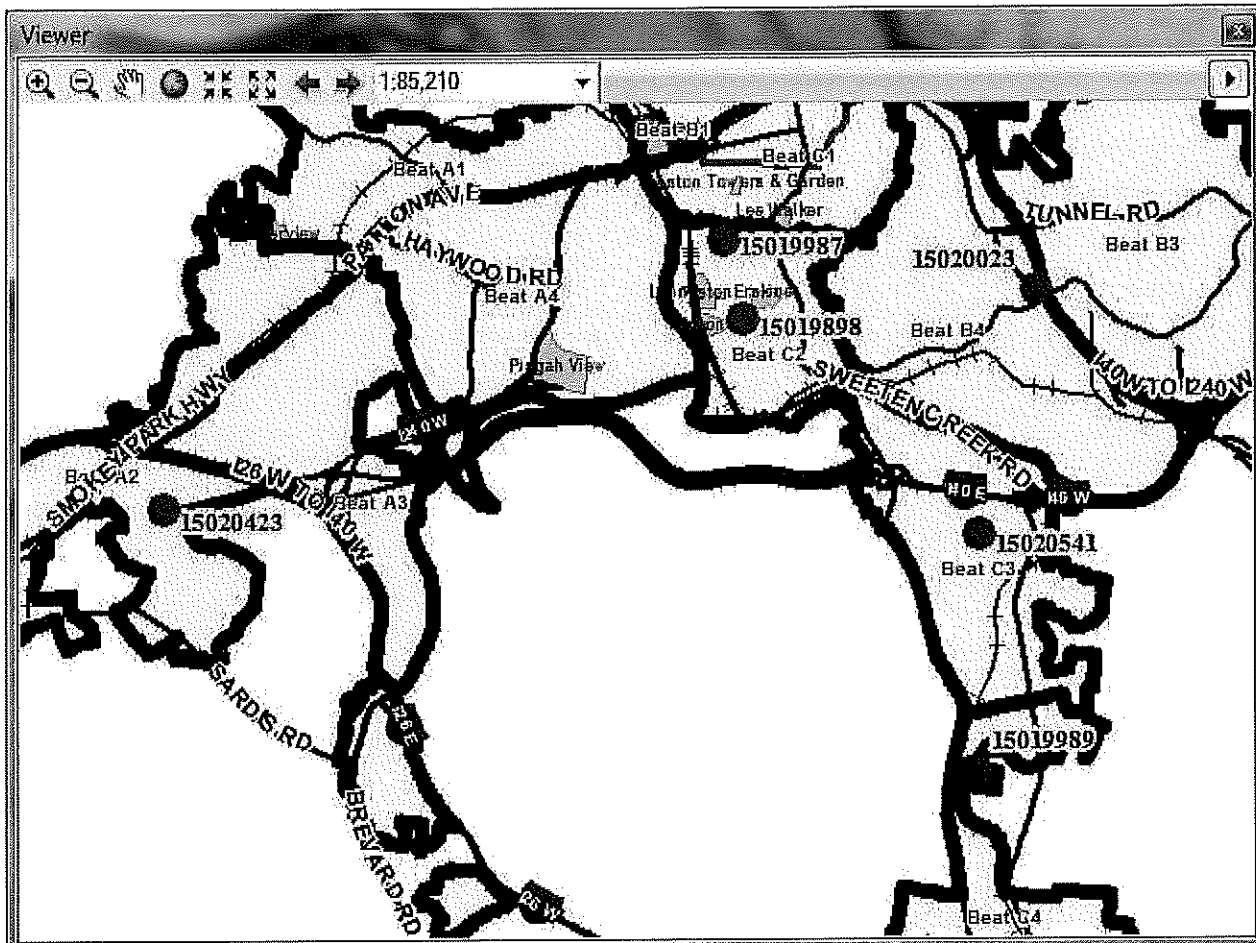


Day of Week / Time of Day.

...4 of the 4 incidents, or 100%, had found/secure times within 12 hours.

Hour Range	1Mon	2Tue	3Wed	4Thu	5Fri	6Sat	7Sun	ByHour
00:00-03:00	67%	0%	0%	0%	0%	17%	0%	83%
03:00-06:00	0%	0%	0%	0%	0%	0%	0%	0%
06:00-09:00	0%	0%	0%	0%	0%	0%	0%	0%
09:00-12:00	0%	0%	0%	0%	17%	0%	0%	17%
12:00-15:00	0%	0%	0%	0%	0%	0%	0%	0%
15:00-18:00	0%	0%	0%	0%	0%	0%	0%	0%
18:00-21:00	0%	0%	0%	0%	0%	0%	0%	0%
21:00-24:00	0%	0%	0%	0%	0%	0%	0%	0%
ByDay	67%	0%	0%	0%	17%	17%	0%	100%

- Citywide. There were 5 Stolen Vehicle – Moped/Scooter incidents during the week from Mon 8/3 to Sun 8/9. The average is 1.3 per week.
- Three of these were reported on Tue 8/4.
- See G:\APD\Compstat\Bulletin1336\SikeInfo\“01” files.



Day of Week / Time of Day.

...4 of the 6 incidents, or 67%, had found/secure times within 12 hours.

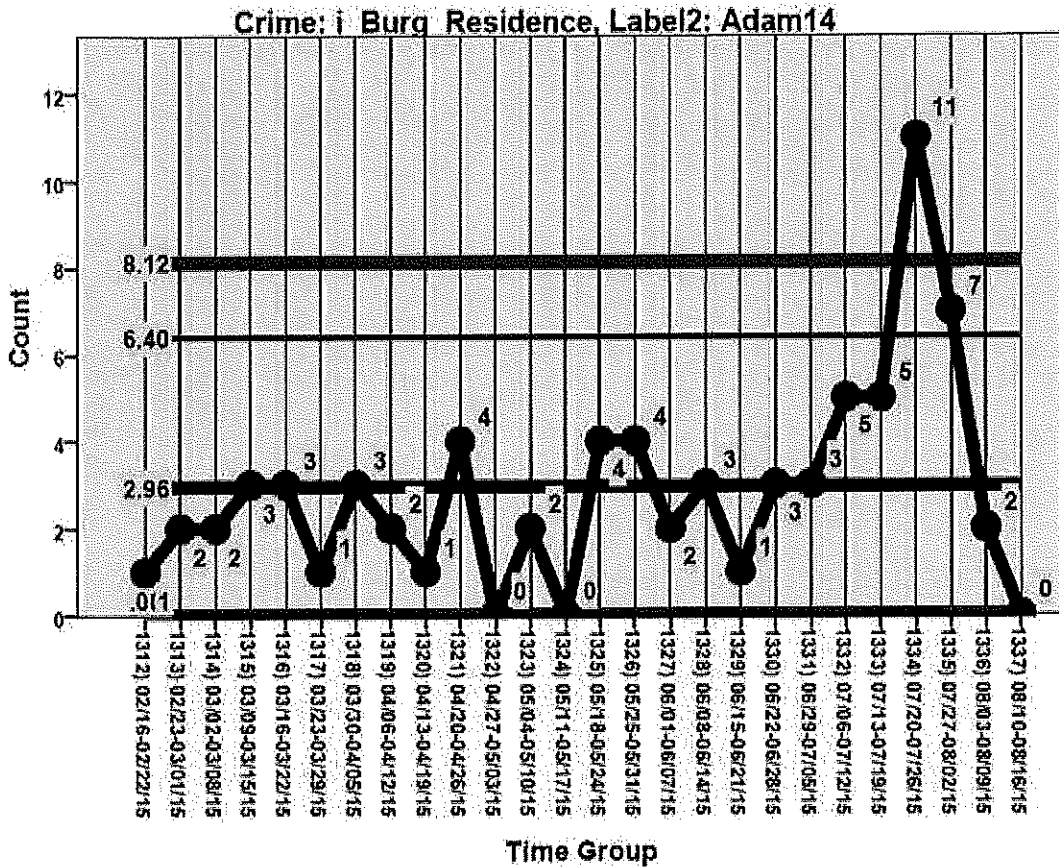
Hour Range	1Mon	2Tue	3Wed	4Thu	5Fri	6Sat	7Sun	By Hour
00:00-03:00	8%	19%	0%	0%	0%	0%	0%	27%
03:00-06:00	0%	19%	0%	0%	0%	0%	0%	19%
06:00-09:00	0%	3%	0%	0%	0%	0%	0%	3%
09:00-12:00	0%	0%	0%	0%	0%	0%	0%	0%
12:00-15:00	0%	10%	0%	0%	0%	0%	0%	10%
15:00-18:00	0%	0%	0%	0%	0%	0%	0%	0%
18:00-21:00	0%	0%	0%	0%	0%	0%	0%	0%
21:00-24:00	10%	0%	0%	0%	0%	0%	32%	42%
By Day	18%	50%	0%	0%	0%	0%	32%	100%

- Downtown
 - Downtown. No spike activity.

- Public Housing
 - Public Housing. No spike activity.

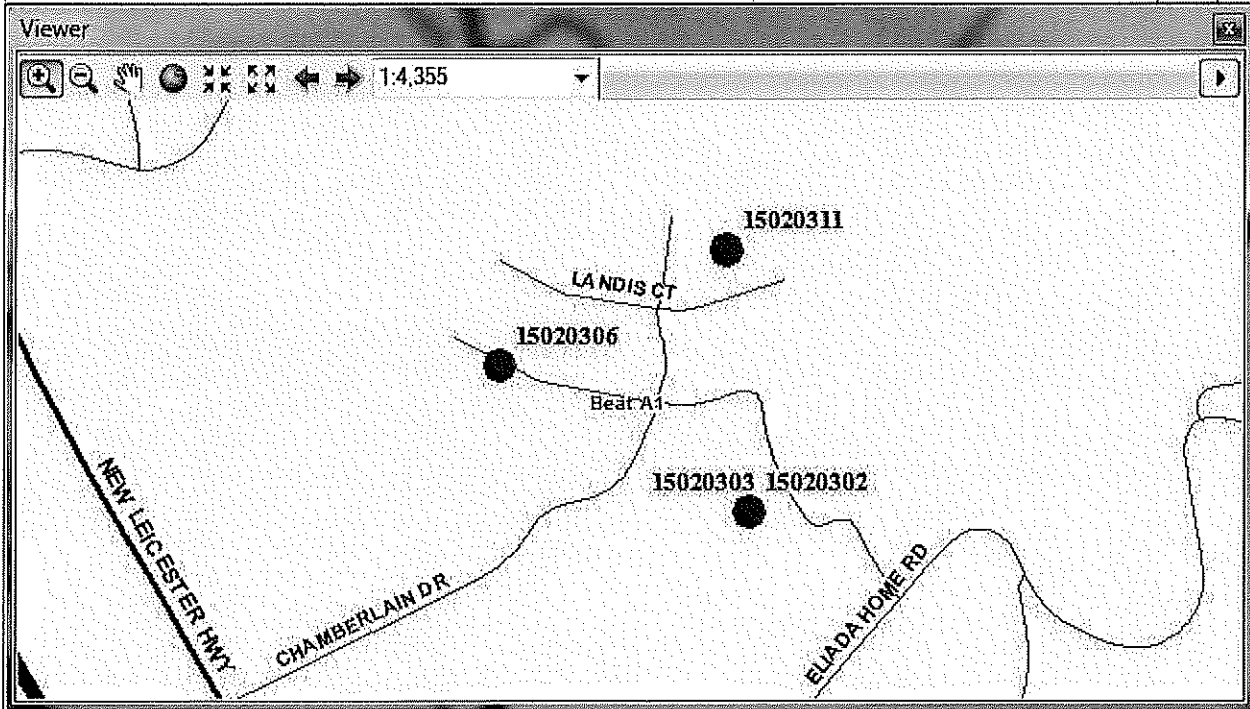
- Adam1 and Adam4

- Adam1 and Adam4. The prior weeks' Residential Burglary spike activity has essentially stopped. There were 2 events in the recent week from Mon 8/3 to Sun 8/9.



- Adam1. There were [REDACTED] reported on Fri 8/7 in cluster near Longwood Ln. Passenger window was shattered in each event.
- See G:\APD\Compstat\Bulletin1336\SikeInfo\ "04" files.

RepDate	OffenseC	casenum1	address1	happened	Beat	Open	Grand Total
Fri 08/07/15	CarBandE _B	15020306	200 LONGWOOD LN	8/7 2:00AM and Fri 10:30AM Span of 8hours 30minutes	Adam1	1	1
		15020311	WESTMONT COMMONS APARTMENTS/ 500 LANDIS CT	Occurred Between Thu 8/6 10:00PM and Fri 12:25PM Span of 14hours 25minutes	Adam1	1	1
		15020303	900 LONGWOOD LN	Occurred Between Thu 8/6 4:00PM and Fri 9:22AM Span of 17hours 22minutes	Adam1	1	1
		15020302	900 LONGWOOD LN, AT: 302	Occurred Between Thu 8/6 9:00PM and Fri 9:22AM Span of 12hours 22minutes	Adam1	1	1
Grand Total						4	4



Day of Week / Time of Day.

...1 of the 4 incidents, or 25%, had found/secure times within 12 hours.

Hour Range	1Mon	2Tue	3Wed	4Thu	5Fri	6Sat	7Sun	ByHour
00:00-03:00	0%	0%	0%	0%	11%	0%	0%	11%
03:00-06:00	0%	0%	0%	0%	33%	0%	0%	33%
06:00-09:00	0%	0%	0%	0%	33%	0%	0%	33%
09:00-12:00	0%	0%	0%	0%	22%	0%	0%	22%
12:00-15:00	0%	0%	0%	0%	0%	0%	0%	0%
15:00-18:00	0%	0%	0%	0%	0%	0%	0%	0%
18:00-21:00	0%	0%	0%	0%	0%	0%	0%	0%
21:00-24:00	0%	0%	0%	0%	0%	0%	0%	0%
ByDay	0%	0%	0%	0%	100%	0%	0%	100%

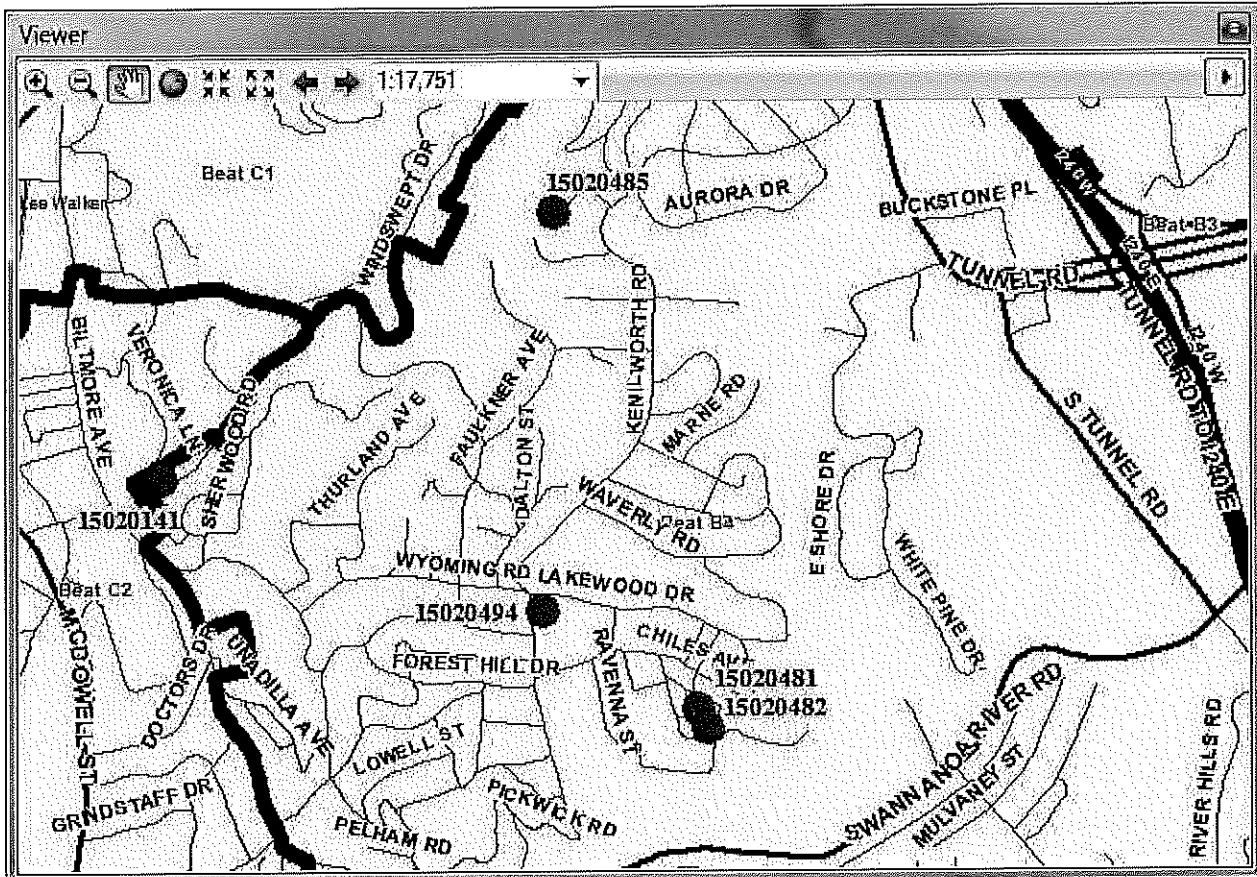
- Adam2 and Adam3
 - Adam2 and Adam3. No spike activity.

- Baker1 and Baker2
 - Baker1 and Baker2. No spike activity.

- Baker3 and Baker4
 - Baker4. There were [REDACTED] in Baker4's Kenilworth neighborhood during the week from Mon 8/3 to Sun 8/9. The average for Kenilworth is less than one every two weeks. Two of these are 1st Degree Burglary that were reported Sun 8/9.
 - Events 15020481 and 15020482 are possibly related. In one of these kitchen screen was cut; case 15020141 indicates kitchen screen removed.
 - See G:\APD\Compstat\Bulletin1336\SikeInfo\ "03" files.

RepDate	OffenseCat	casenum1	address1	happened	Beat	Open	Grand Total
Wed 08/05/15	BurgResidence	15020141	17 BUCHANAN RD	Occurred On Wed 8/5 4:08PM	Baker4	1	1
Sun 08/09/15	BurgResidence	15020494	139 KENILWORTH RD	Occur time spans 1days 13hours from Sat 8/8 12:00AM to Sun 8/9 1:00PM	Baker4	1	1
		15020481	5 CRAGGY CIR	Occurred On Sun 8/9 6:30AM	Baker4	1	1
	Burg1stDegree	15020485	23 CLEARBROOK RD	Occur time spans 1days 9hours from Sat 8/8 12:00AM to Sun 8/9 9:00AM	Baker4	1	1
		15020482	24 WESTCHESTER DR	Occurred Between Sun 8/9 4:00AM and Sun 6:30AM Span of 2hours 30minutes	Baker4	1	1
Grand Total						5	5

RepDate	OffenseCat	casenum1	APD	
08/05/15	BurgResidence	15020141	1	kitchen screen removed. Dresser drawers pulled open.
08/09/15	BurgResidence	15020494	1	also mentioned that she had seen a suspicious person last week walking back and forth around her property on Lakewood Dr. Roberts described the person as a black male, about 6 feet tall in his mid-40's.
		15020481	1	two black male suspects had been seen attempting to break into a home on 5 Craggy Cir. As Officer Wall arrived he located the two male suspects Deveon Chambers and Maurice Chandler walking in the area at the corner of Chiles Ave and Kennilworth
	Burg1stDegree	15020485	1	Burglary and Stolen Vehicle.
		15020482	1	were asleep in the residence when an unknown number of subjects entered their home and attempted to steal personal belongings. Warren stated that around 06:30 he woke up and when he went into the kitchen, he noticed the blinds were pulled up on one of the windows and the screen had been cut open



Day of Week / Time of Day.

...3 of the 5 incidents, or 60%, had found/secure times within 12 hours.

Hour Range	1Mon	2Tue	3Wed	4Thu	5Fri	6Sat	7Sun	ByHour
00:00-03:00	0%	0%	0%	0%	0%	0%	0%	0%
03:00-06:00	0%	0%	0%	0%	0%	0%	36%	36%
06:00-09:00	0%	0%	0%	0%	0%	0%	41%	41%
09:00-12:00	0%	0%	0%	0%	0%	0%	0%	0%
12:00-15:00	0%	0%	0%	0%	0%	0%	0%	0%
15:00-18:00	0%	0%	23%	0%	0%	0%	0%	23%
18:00-21:00	0%	0%	0%	0%	0%	0%	0%	0%
21:00-24:00	0%	0%	0%	0%	0%	0%	0%	0%
ByDay	0%	0%	23%	0%	0%	0%	77%	100%

- Charlie1 and Charlie2
 - Charlie1 and Charlie2. No spike activity.

- Charlie3
 - Charlie3. No spike activity.

- Charlie4 and Charlie5

- Charlie4 and Charlie5. No spike activity.

Ed Eads
Crime Analyst
Asheville Police Department
828 259-5883
eeads@ashevillenc.gov



Think Green! Please do not print this e-mail unless necessary

Confidentiality Notice: This email message, including any attachments, is for the sole use of the intended recipient(s) and may contain confidential and privileged information. Any unauthorized use, disclosure, or distribution is prohibited.

Ed Eads
Crime Analyst
Asheville Police Department
828 259-5883
eeads@ashevillenc.gov

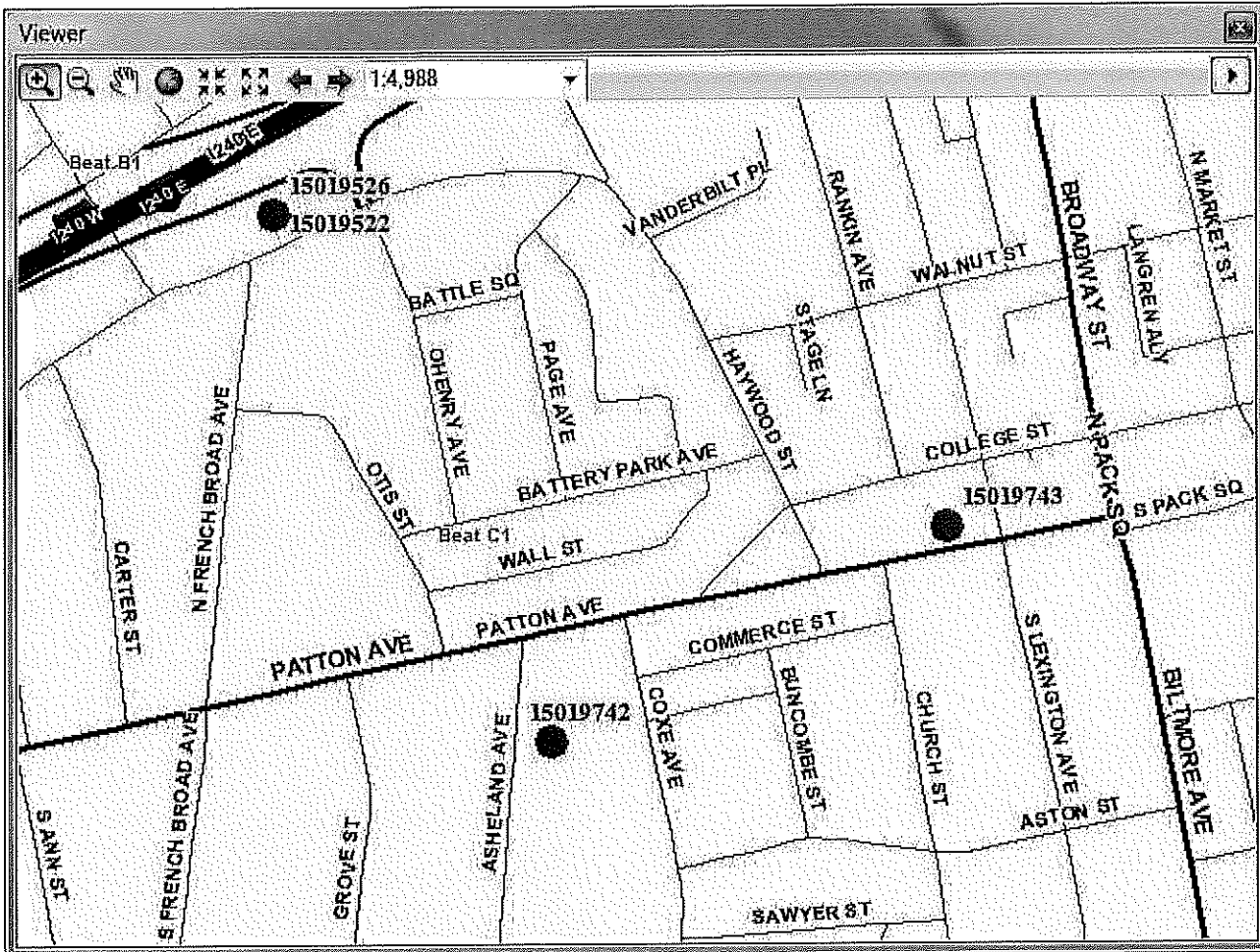


Think Green! Please do not print this e-mail unless necessary

Confidentiality Notice: This email message, including any attachments, is for the sole use of the intended recipient(s) and may contain confidential and privileged information. Any unauthorized use, disclosure, or distribution is prohibited.

RepDate	OffenseC	casenum1	address1	happened	Beat	Open	Grand Total
Thu 07/30/15	RobbCom Law	15019526	INDIGO/ 151 HAYWOOD ST	Occurred On Thu 7/30 6:00AM	Charlie1	1	1
	Simple_N otDomesti c	15019522	INDIGO/ 151 HAYWOOD ST	Occurred On Thu 7/30 6:00AM	Charlie1	1	1
Sat 08/01/15	RobbCom Law	15019743	E MUSIC HALL/ 31 PATTON AVE	Occurred On Sat 8/1 12:13AM	Charlie1	1	1
		15019742	CYCLING AND FITNESS/ 28 ASHELAND AVE	Occurred On Sat 8/1 12:21AM	Charlie1	1	1
Grand Total						4	4

15019526	1	Common Law Robbery around 0600 hours. The subject stated he was stopped by two black males in a silver four door sedan and the driver exited the vehicle. The driver was described as a black male, no shirt, sagging jeans and tattoos. The subject stated the passenger appeared to be pointing either a cell phone or handgun at him and was also a black male. The victim stated one of the black males was wearing a white sleeveless t-shirt and in his early twenties.
15019522	1	Simple Assault around 0600 hours. victim stated he observed four to five black males run from an unknown direction and surround him. The witness stated he observed four black males exit a silver four door sedan and approach the victim before assaulting him.
15019743	1	Common Law Robbery 12:13AM. he noticed two or more black males approach them.
15019742	1	Common Law Robbery 12:21AM. he was assaulted by 4 males and his wallet was taken. described one of the male subjects as being a lighter skinned black male with mid ear length dreads. He was not wearing a shirt and was a thinner build. He was only able to provide that the other 3 males involved were black males.



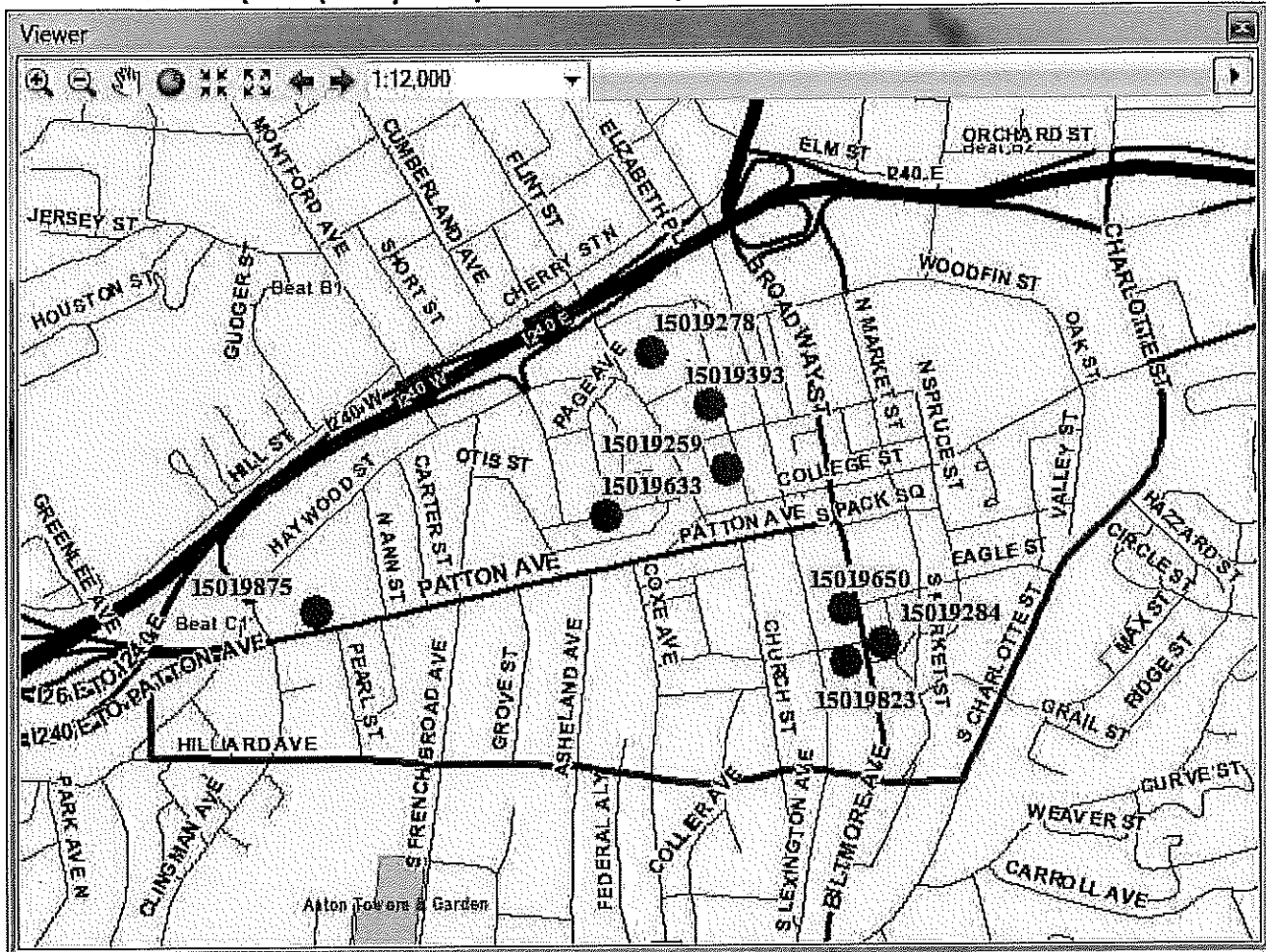
Day of Week / Time of Day.

...4 of the 4 incidents, or 100%, had found/secure times within 12 hours.

Hour Range	1Mon	2Tue	3Wed	4Thu	5Fri	6Sat	7Sun	ByHour
00:00-03:00	0%	0%	0%	0%	0%	50%	0%	50%
03:00-06:00	0%	0%	0%	0%	0%	0%	0%	0%
06:00-09:00	0%	0%	0%	50%	0%	0%	0%	50%
09:00-12:00	0%	0%	0%	0%	0%	0%	0%	0%
12:00-15:00	0%	0%	0%	0%	0%	0%	0%	0%
15:00-18:00	0%	0%	0%	0%	0%	0%	0%	0%
18:00-21:00	0%	0%	0%	0%	0%	0%	0%	0%
21:00-24:00	0%	0%	0%	0%	0%	0%	0%	0%
ByDay	0%	0%	0%	50%	0%	50%	0%	100%

- Downtown. There were 6 Vandalism-Other and 2 Graffiti during the week from Mon 7/27 to Sun 8/2. The average Vandalism-Other count is 2.2 per week.
 - [REDACTED]. The 2 graffiti event are in close proximity; for one it noted, "... provided him with information that the tag "WIKUR" was associated with a subject named "Huckleberry Isreal" and that the tag "AHGEN" was associated with a subject named "David Mitchell""

- See G:\APD\Compstat\Bulletin1335\SikeInfo\ "06" files.

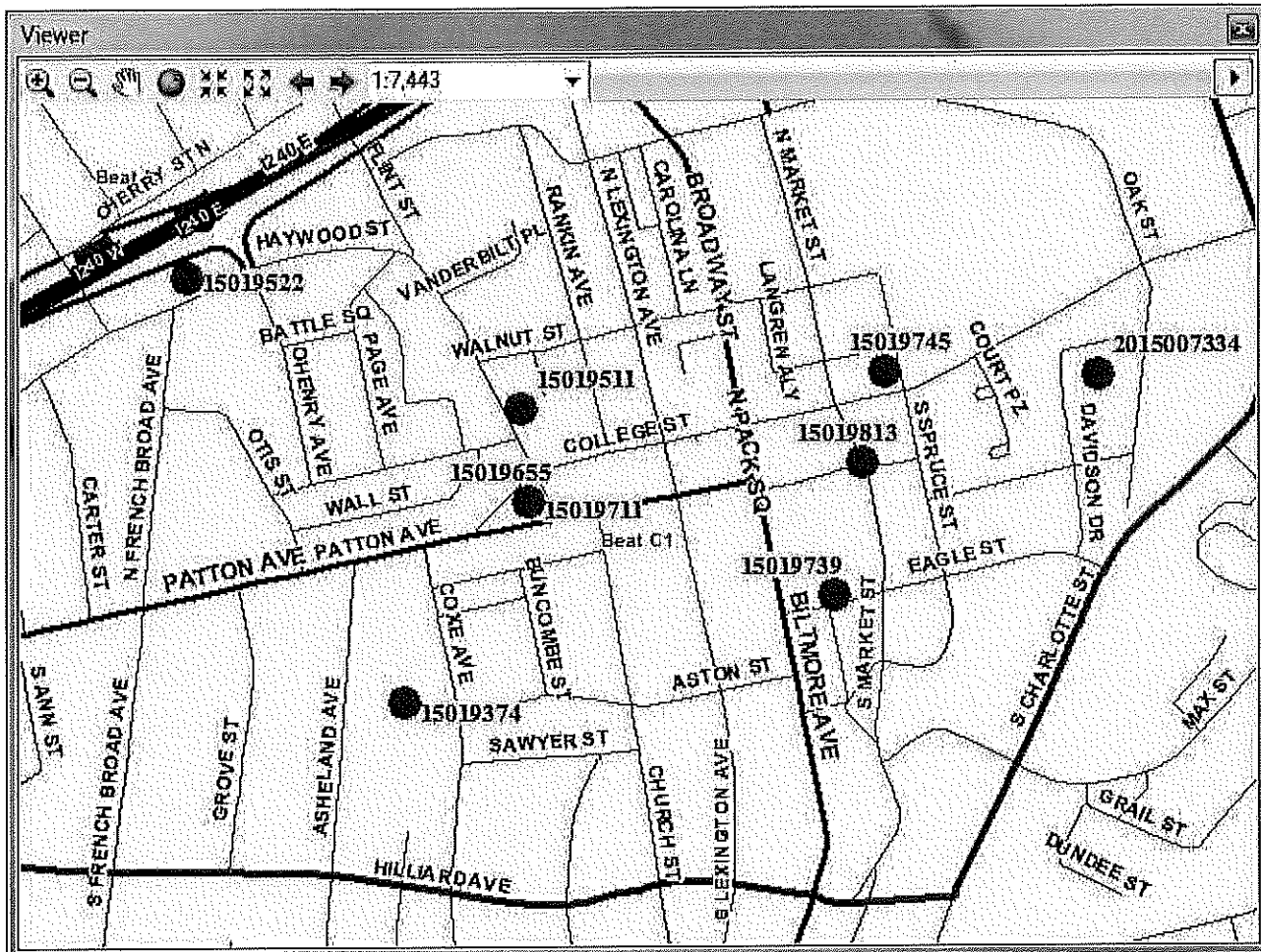


Day of Week / Time of Day.

...4 of the 8 incidents, or 50%, had found/secure times within 12 hours.

Hour Range	1Mon	2Tue	3Wed	4Thu	5Fri	6Sat	7Sun	ByHour
00:00-03:00	0%	0%	12%	0%	0%	0%	0%	12%
03:00-06:00	0%	0%	12%	0%	26%	0%	0%	39%
06:00-09:00	0%	0%	0%	0%	0%	0%	0%	0%
09:00-12:00	0%	0%	0%	0%	0%	0%	0%	0%
12:00-15:00	0%	0%	0%	0%	0%	0%	0%	0%
15:00-18:00	0%	0%	0%	0%	0%	0%	0%	0%
18:00-21:00	0%	0%	0%	0%	0%	11%	0%	11%
21:00-24:00	27%	0%	0%	0%	0%	11%	0%	38%
ByDay	27%	0%	24%	0%	26%	22%	0%	100%

- Downtown. There were [REDACTED] during the week from Mon 7/27 to Sun 8/2. The average is 2.1 per week.
- See above Common Law Robbery section, case 15019739 is similar: "approached by a group of 4 black males. One described as, black male that was approx. 5 foot 11 inches tall, slim build wearing a white button up shirt and possibly blue jeans and glasses."
- See G:\APD\Compstat\Bulletin1335\SikeInfo\ "07" files.



Day of Week / Time of Day.

...9 of the 9 incidents, or 100%, had found/secure times within 12 hours.

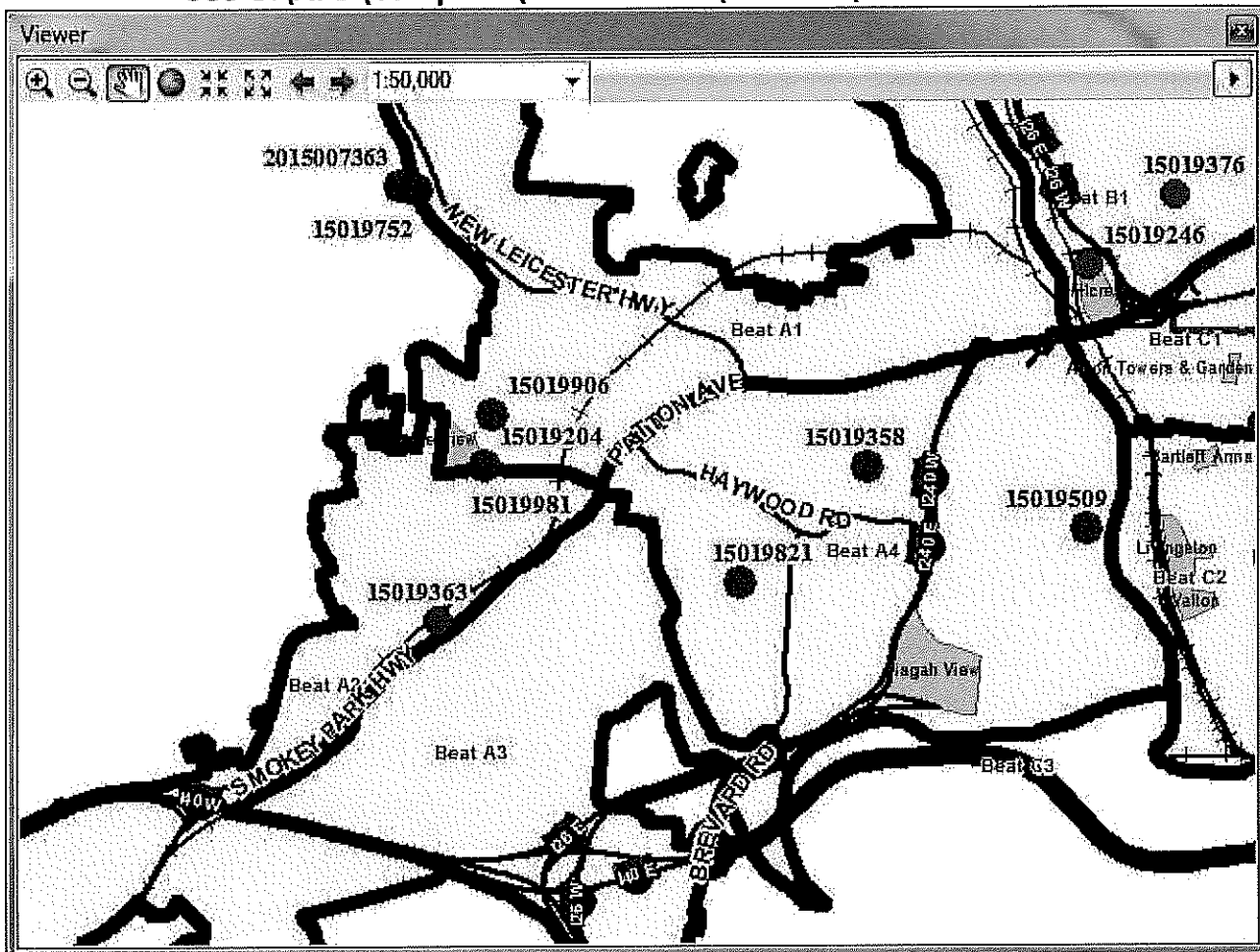
Hour Range	1Mon	2Tue	3Wed	4Thu	5Fri	6Sat	7Sun	ByHour
00:00-03:00	0%	0%	0%	0%	0%	29%	0%	29%
03:00-06:00	0%	0%	0%	0%	0%	0%	0%	0%
06:00-09:00	0%	0%	0%	10%	0%	0%	0%	10%
09:00-12:00	0%	0%	0%	0%	10%	0%	0%	10%
12:00-15:00	0%	0%	0%	0%	10%	0%	0%	10%
15:00-18:00	0%	0%	0%	0%	0%	0%	0%	0%
18:00-21:00	0%	10%	0%	0%	9%	14%	0%	33%
21:00-24:00	0%	0%	9%	0%	0%	0%	0%	9%
ByDay	0%	10%	9%	10%	28%	43%	0%	100%

- **Public Housing**
 - Deaverview. See next section for Adam1 and Adam4 – 4 Residential Burglary events in Deaverview.

- **Adam1 and Adam4**
 - Adam1 and Adam4. Last week (Mon 7/20 to Sun 7/26) there was a spike of 11 Residential Burglary. The recent week, from Mon 7/27 to Sun 8/2, shows a

count of [REDACTED]. There has been one additional event reported Mon 8/3. And one event in the county along New Leicester Hwy next to a city event – arrestee for these 1st degree Burglaries is Travis Jerrell Brown.

- Unlike last week where the events were concentrated in Adam4, the events since Mon 7/27 are mostly in Adam1 – 4 of which are at Deaverview and 1 nearby.
- See G:\APD\Compstat\Bulletin1335\SikeInfo\ "03" files.



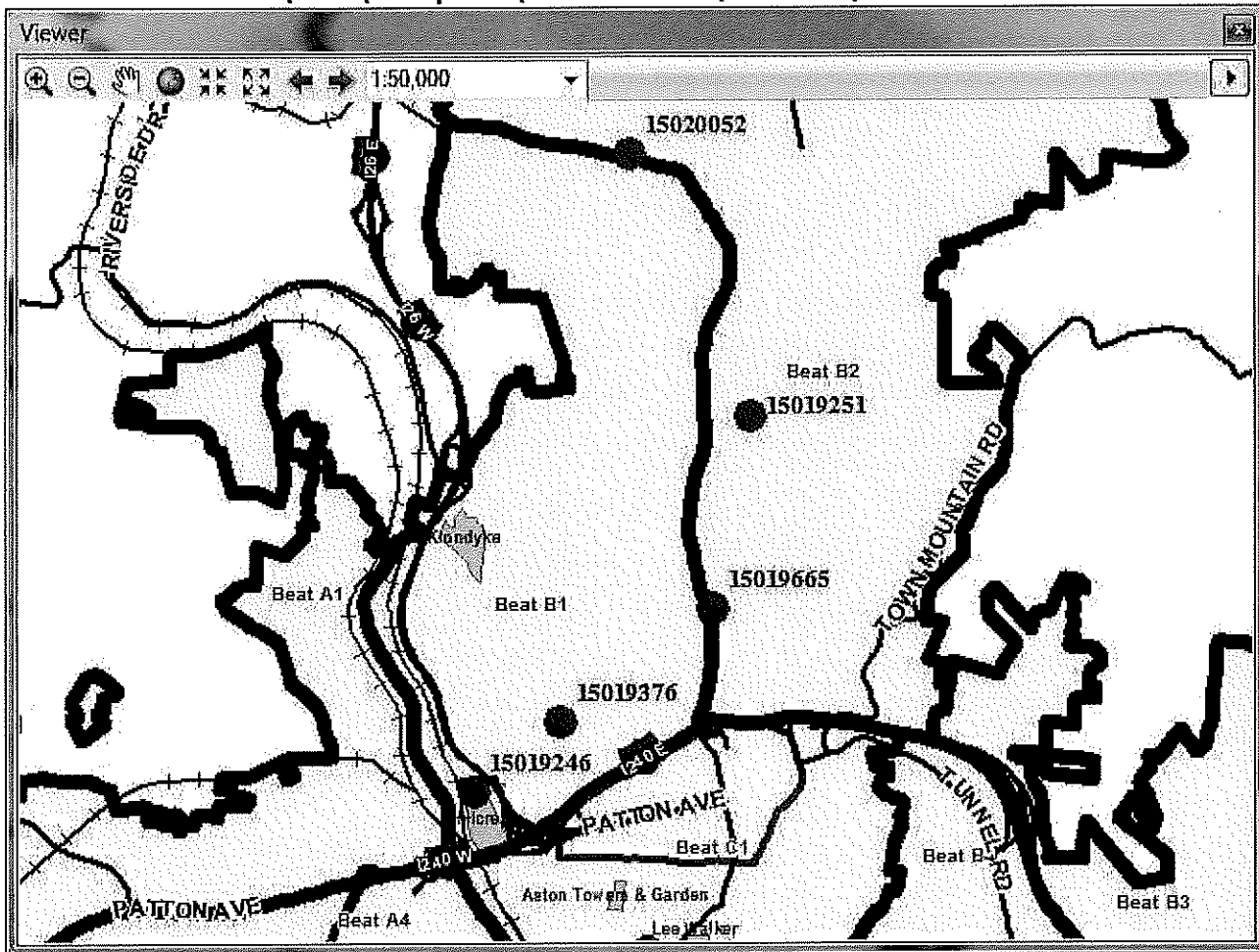
Day of Week / Time of Day.

...7 of the 10 incidents, or 70%, had found/secure times within 12 hours.

Hour Range	1Mon	2Tue	3Wed	4Thu	5Fri	6Sat	7Sun	ByDay
00:00-03:00	0%	0%	0%	7%	0%	6%	0%	13%
03:00-06:00	0%	12%	0%	5%	0%	6%	0%	22%
06:00-09:00	8%	0%	0%	0%	0%	0%	0%	8%
09:00-12:00	0%	0%	0%	0%	0%	0%	0%	0%
12:00-15:00	0%	0%	0%	0%	0%	6%	0%	6%
15:00-18:00	0%	0%	0%	0%	0%	6%	0%	6%
18:00-21:00	16%	0%	2%	0%	0%	6%	0%	24%
21:00-24:00	11%	0%	7%	0%	0%	4%	0%	22%
ByDay	34%	12%	10%	12%	0%	32%	0%	100%

- Adam2 and Adam3

- Adam2 and Adam3. No spike activity.
- Baker1 and Baker2
 - Baker1 and Baker2. There were 4 Residential Burglary during the week from Mon 7/27 to Sun 8/2, and one event since then. The average is 1.4 per week.
 - Case 15020052 is one of the incidents (the other in Weaverville) where a Hispanic male and female are targeting elderly citizens by posing as utility employees.
 - See G:\APD\Compstat\Bulletin1335\SikeInfo\ "04" files.



Day of Week / Time of Day.

...3 of the 5 incidents, or 60%, had found/secure times within 12 hours.

Hour Range	1Mon	2Tue	3Wed	4Thu	5Fri	6Sat	7Sun	ByHour
00:00-03:00	0%	0%	0%	0%	0%	0%	0%	0%
03:00-06:00	0%	0%	0%	0%	0%	0%	0%	0%
06:00-09:00	0%	0%	0%	0%	0%	0%	0%	0%
09:00-12:00	0%	0%	0%	0%	0%	0%	0%	0%
12:00-15:00	0%	0%	0%	0%	0%	0%	0%	0%
15:00-18:00	41%	16%	0%	0%	0%	0%	0%	57%
18:00-21:00	0%	29%	0%	0%	0%	0%	0%	29%
21:00-24:00	0%	14%	0%	0%	0%	0%	0%	14%
ByDay	41%	59%	0%	0%	0%	0%	0%	100%

- Baker3 and Baker4
 - Baker3 and Baker4. No spike activity.

- Charlie1 and Charlie2
 - Charlie1 and Charlie2. No spike activity.

- Charlie3
 - Charlie3. No spike activity.

- Charlie4 and Charlie5
 - Charlie4 and Charlie5. No spike activity.

Ed Eads
 Crime Analyst
 Asheville Police Department
 828 259-5883
eeads@ashevillenc.gov




Think Green! Please do not print this e-mail unless necessary

Confidentiality Notice: This email message, including any attachments, is for the sole use of the intended recipient(s) and may contain confidential and privileged information. Any unauthorized use, disclosure, or distribution is prohibited.

Ben Fulmer

From: eeads@ashevillenc.gov
Sent: Tuesday, February 03, 2015 1:19 PM
To: PoliceDistrictAWestSupervisors@ashevillenc.gov;
PoliceDistrictBNorth/EastSupervisors@ashevillenc.gov;
PoliceDistrictCSouth/CentralSupervisors@ashevillenc.gov
Cc: SBelcher@ashevillenc.gov; wwood@ashevillenc.gov; sgonce@ashevillenc.gov;
CReeceYoung@ashevillenc.gov; BGriffin@ashevillenc.gov; JStepp@ashevillenc.gov;
sriddle@ashevillenc.gov; SHendricks@ashevillenc.gov;
CRIMINVESTSUPV@ashevillenc.gov; dromick@ashevillenc.gov;
kmcculloch@ashevillenc.gov; spruett@ashevillenc.gov; afowler@ashevillenc.gov;
forensics@ashevillenc.gov; PoliceLieutenants@ashevillenc.gov;
KSkonieczny@ashevillenc.gov; TBrigman@ashevillenc.gov; RJustus@ashevillenc.gov;
SDavis@ashevillenc.gov; LLovelace@ashevillenc.gov; CWells@ashevillenc.gov
Subject: Compstat Bulletin 1309
Attachments: TwoPlusWeeks_Adam.kmz; TwoPlusWeeks_Baker.kmz; TwoPlusWeeks_Charlie.kmz;
Weeks_1308_1309.kmz; BaseLayers.kmz; DailyMap.kmz; Other_1308_1309_
1310Partial.kmz; Overview1309.pdf; PublicHousing.kmz; PH_List2.pdf; A_List1.pdf;
A_List2.pdf; B_List1.pdf; B_List2.pdf; C_List1.pdf; C_List2.pdf; County_List1.pdf;
County_List2.pdf; PH_List1.pdf

Dates below are when the event was reported unless otherwise noted. Recent week 1309 is Mon 1/26 to Sun 2/1/15. Info in this bulletin shows system info as of 2/3/15 AM.

 indicates a spike where at least some of the events are, based on counts, quite likely to be related.

Other listed events indicate above average activity.

- **Citywide**
 - With 5 Burglary (average is 2.1 per day) on Sun 1/25 and Fri 1/30.
 1. Majority of these clustered in Adam4 – see Adam14 section
 - With 73 Larceny (average is 54.1 every two weeks) during two weeks from 1/19 to 2/1
 1. 6 to 8 is typical over most days since Mon 1/19; typically we average under 4 hits per day
 2. 39 hits during week from 1/26 to 2/1, with 8 hits on Sat 1/31
 - With 51 Shoplifting (average is 37.6 every two weeks) during two weeks from 1/19 to 2/1
 1. 7 hits on Wed 1/28, 6 hits on Fri 1/30
- **Public Housing**
 - With no spike activity
- **Downtown**

- With two weeks in a row of 5 Larceny hits per week (typically 2 or 3), and 3 hits so far in current week

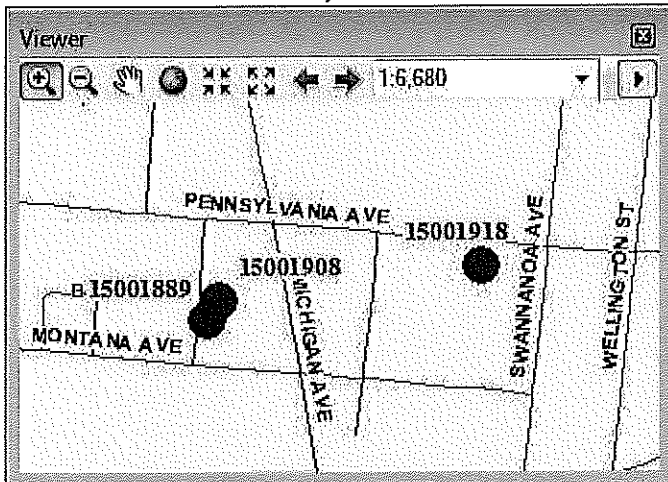
RepDate	OffenseCat	casenum1	address1	happened	Beat	Suspended	Closed	Open	Grand Total	
01/19/15	Larceny	15001429	WICK AND GREENE JEWELERS/ 11 GROVE ST	Occurred On Mon 1/19 7:18PM	Charlie 1			1	1	
01/21/15	Larceny	15001599	ASHEVILLE MUSIC HALL/ 31 PATTON AVE	1hours 30minutes from Tue 1/20 12:00AM to Wed 1/21 1:30AM	Charlie 1	1			1	
01/23/15	Larceny	2015000696	60 COURT PZ	Occurred On Fri 1/23 9:00AM	Charlie 1		1		1	
		15001771	CAKE WEBSITE AND MOORE/ 151 S LEXINGTON AVE	Occurred Between Thu 1/22 6:50PM and Fri 10:00AM Span of 16hours 10minutes	Charlie 1			1	1	
01/24/15	Larceny	15001864	LEXINGTON AVE. AT 1/2	Occurred On Sat 1/24 5:53PM	Charlie 1			1	1	
		15001819	HOTEL ALOFT/ 51 BILTMORE AVE	Occurred On Sat 1/24 1:23AM	Charlie 1			1	1	
01/26/15	Larceny	15001955	ASHEVILLE POLICE DEPT/ 45 CHARLOTTE ST	Occurred Between Fri 1/16 1:00PM and Fri 5:00PM Span of 4hours	NoBeat APD			1	1	
01/27/15	Larceny	15002047	DEPT/ 121 PATTON AVE	Occurred On Fri 1/23 4:30PM	Charlie 1	1			1	
01/30/15	Larceny	15002312	THE ORANGE PEEL/ 101 BILTMORE AVE	Occurred Between Thu 1/29 9:30PM and Fri 1:00AM Span of 3hours 30minutes	Charlie 1			1	1	
01/31/15	Larceny	15002420	BLK MTN COLLEGE MUSEUM/ 56 BROADWAY ST	Occur time spans 10days 3hours from Tue 1/20 4:00PM to Fri 1/30 7:00PM	Charlie 1			1	1	
02/01/15	Larceny	15002514	NEW MOUNTAIN MUSIC HALL/ 38 N FRENCH BROAD AVE	Occurred Between Sat 1/31 1:00AM and Sat 2:00AM Span of 1hours	Charlie 1			1	1	
		15002491	SCULLYS/ 13 WALNUT ST	Occurred Between Sun 2/1 12:45AM and Sun 1:00AM Span of 15minutes	Charlie 1			1	1	
02/02/15	Larceny	15002531	80 WALNUT ST	Occurred Between Sun 2/1 8:00PM and Mon 12:35AM Span of 4hours 35minutes	Charlie 1		1		1	
Grand Total							2	2	9	13

- Adam14

- With 3 Burglary (average is 0.6 per day) on Fri 1/30 at same location

RepDate	OffenseCat	casenum1	address1	happened	Beat	Open	Grand Total
01/30/15	BurgBusiness	15002316	DRAGON CHINA/ 1341 PARKWOOD RD	Occurred Between Thu 1/29 11:50AM and Fri 11:00AM Span of 23hours 10minutes	Adam4	1	1
		15002315	NEO BURRITO/ 1341 PARKWOOD RD	Occurred Between Thu 1/29 11:59AM and Fri 11:00AM Span of 23hours 1minutes	Adam4	1	1
		15002308	EUROMARKET/ 1341 PARKWOOD RD	Occurred Between Fri 1/30 1:00AM and Fri 9:45AM Span of 8hours 45minutes	Adam4	1	1
Grand Total						3	3

- With 3 hits Sun 1/25 in close proximity. (These are marked as Burglary but are CarB&E's)



RepDate	OffenseCat	casenum1	address1	happened	Beat	Closed	Grand Total
01/25/15	BurgOther	15001918	38 PENNSYLVANIA AVE	Occurred Between Sat 1/24 11:00PM and Sun 3:16PM Span of 16hours 16minutes	Adam4	1	1
		15001889	122 RICHMOND AVE	Occurred On Sun 1/25 1:21AM	Adam4	1	1
		15001908	118 RICHMOND AVE	Occurred Between Sat 1/24 10:00PM and Sun 12:47PM Span of 14hours 47minutes	Adam4	1	1
Grand Total						3	3

- With 5 CarB&E (average is 1.9 per week) during week from 1/26 to 2/1
- With 8 Shoplifting (average is 4.0 per week) during week from 1/26 to 2/1
- Adam23
 - With 11 Larceny (average is 5.8 every two weeks) during two weeks from 1/19 to 1/21
 - With 3 Stolen Vehicle (average is 1.1 per week) during week from 1/26 to 2/1
- Baker12
 - With 8 Burglary (average is 4.3 every two weeks) during two weeks from 1/19 to 2/1
 - Mondays and Tuesdays are typical, all but one of these Residential hits

RepDate	OffenseCat	casenum1	address1	happened	Beat	Open	Grand Total
01/19/15	BurgBusiness	15001381	YOLO/ 505 MERRIMON AVE	Occurred Between Sun 1/18 10:32PM and Mon 9:00AM Span of 10hours 28minutes	Baker2	1	1
01/20/15	BurgResidence	15001535	32 WESTHAVEN DR	Occurred On Tue 1/20 9:20PM	Baker2	1	1
		15001456	60 HOLLAND ST	Occurred On Tue 1/20 7:48AM	Baker1	1	1
01/21/15	BurgResidence	15001561	303 COUNTRY CLUB RD	7:59AM	Baker2	1	1
01/22/15	BurgResidence	15001736	400 CUMBERLAND AVE	Occurred Between Thu 1/22 9:30PM and Thu 10:00PM Span of 30minutes	Baker1	1	1
01/26/15	BurgResidence	15001971	THE GROVE/ 1100 BULLDOG DR, AT: 302	Occur time spans 11days 12hours from Mon 12/22 12:00PM to Sat 1/3 12:00AM	Baker1	1	1
01/27/15	BurgResidence	15002007	18 MAYFIELD RD	Occurred On Tue 1/27 1:25AM	Baker2	1	1
		15002039	54 NORTH ST	Occurred Between Tue 1/27 10:45AM and Tue 12:20PM Span of 1hours 35minutes	Baker1	1	1
Grand Total						8	8

Day of Week / Time of Day.

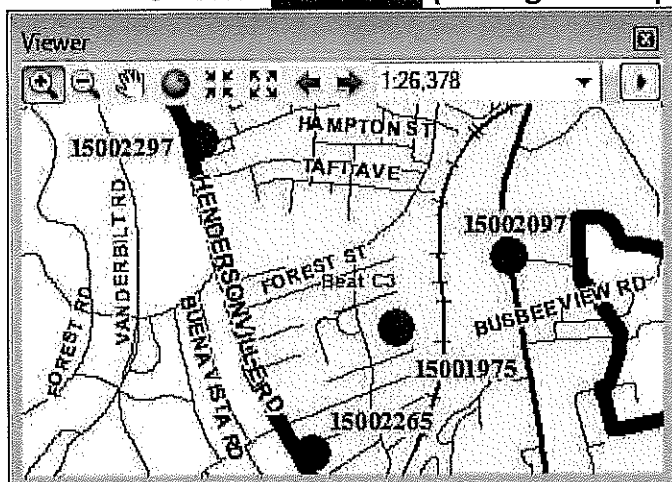
7 of the 8 incidents, or 88%, had found/secure times within 12 hours.

Hour Range	1Mon	2Tue	3Wed	4Thu	5Fri	6Sat	7Sun	ByHour
00:00-03:00	9%	9%	0%	0%	0%	0%	0%	18%
03:00-06:00	9%	0%	0%	0%	0%	0%	0%	9%
06:00-09:00	9%	9%	9%	0%	0%	0%	0%	27%
09:00-12:00	0%	16%	0%	0%	0%	0%	0%	16%
12:00-15:00	0%	8%	0%	0%	0%	0%	0%	8%
15:00-18:00	0%	0%	0%	0%	0%	0%	0%	0%
18:00-21:00	0%	0%	0%	0%	0%	0%	0%	0%
21:00-24:00	0%	9%	0%	9%	0%	0%	6%	23%
ByDay	26%	51%	9%	9%	0%	0%	6%	100%

- With [REDACTED] (average is 2.3 per week) during week from 1/26 to 2/1 (p170). Several of these at Grove Park Inn:

RepDate	OffenseCat	casenum1	address1	happened	Beat	Suspended	Open	Grand Total	
01/26/15	Larceny	15001985	GROVE PARK INN/ 290 MACON AVE	Occurred Between Thu 12/4 7:30AM and Thu 5:00PM Span of 9hours 30minutes	Baker2		1	1	
		15001968	31 GRIFFING CIR	Occur time spans 41days 7hours 30minutes from Tue: 11/25 8:00AM to Mon 1/5 3:30PM	Baker2	1		1	
		15001984	GROVE PARK INN/ 290 MACON AVE	Occurred Between Mon 12/29 12:15PM and Mon 5:30PM Span of 5hours 15minutes	Baker2		1	1	
		15001970	GROVE PARK INN/ 290 MACON AVE	Occurred On Mon 1/26 11:52AM	Baker2		1	1	
		15002036	GENOVA DIAGNOSTICS/ 63 ZILICOA ST	Occurred Between Sun 1/25 2:00PM and Sun 10:00PM Span of 8hours	Baker1	1		1	
01/27/15	Larceny	15002014	GROVE PARK INN/ 290 MACON AVE	Occurred Between Thu 12/11 8:00AM and Thu 6:00PM Span of 9hours	Baker2		1	1	
01/28/15	Larceny	15002180	GROVE PARK INN/ 290 MACON AVE	Occurred Between Mon 1/26 7:00AM and Mon 9:00AM Span of 2hours	Baker2	1		1	
Grand Total							3	4	7

- With 4 Simple Assault (average is 1.3 per week) during week from 1/26 to 2/1
- With 3 Graffiti (average is 0.9 every two weeks) during two weeks from 1/19 to 2/1
- Baker34
 - With 3 Larceny (average is 0.8 per day) on Sat 1/31
- Charlie12
 - With 21 Larceny (average is 11.7 every two weeks) during two weeks from 1/19 to 2/1
 1. This is driven primarily from additional Downtown activity, see above
- Charlie3
 - With ██████████ (average is 0.9 per week) during week from 1/26 to 2/1 (p152)

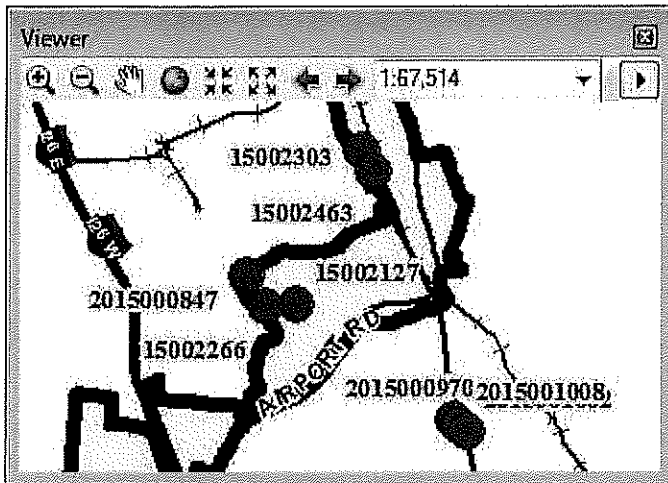


RepDate	OffenseCat	casenum1	address1	happened	Beat	Open	Grand Total
01/26/15	BurgOther	15001975	LAURELWOOD APARTMENTS/ 650 CARIBOU RD.	Occurred On Mon 1/26 12:49PM	Charlie 3	1	1
01/28/15	BurgResidence	15002097	PINE VALLEY MOBILE HOME PARK/ 1075 SWEETEN CREEK RD.	Occurred Between Wed 1/28 8:30AM and Wed 9:04AM Span of 34minutes	Charlie 3	1	1
01/29/15	BurgResidence	15002265	FORESTDALE APARTMENTS/ 1020 HENDERSONVILLE RD.	Occurred On Thu 1/29 7:06PM	Charlie 3	1	1
01/30/15	BurgBusiness	15002297	CANVAS STUDIO FOR HAIR/ 668 HENDERSONVILLE RD. AT: B	Occurred On Fri 1/30 5:53AM	Charlie 3	1	1
Grand Total:						4	4

casenum1	
15001975	black male wearing dark jeans and a dark shirt with short hair walking through the building and entering the apartments without permission. Harper stated he was in the back room on the phone when he walked toward the front and a black male was standing in his apartment. Harper stated the suspect introduced himself as Tyrell. Angel stated as he was entering his apartment the suspect walked very close behind him entering the apartment as well. Hightower notified me via telephone stating a resident Valerie Currie informed her that the suspect entered her apartment without knocking.
15002097	when she returned home she heard someone in her back bedroom. Vazquez stated she confronted the subject who shoved her down and ran out the back door. Vazquez could only describe the subject as a young, thin, hispanic male with short cut hair.
15002265	Khan returned home around 1900 hours, and discovered that his doors were now locked, but that he was missing an acoustic guitar and a new pair of shoes from his closet. Khan believes that Holland made a key that he didn't return and took the items.
15002297	When officers arrived they noticed the front door glass smashed, and the items inside rummaged through. Officers noticed that there was a large concrete rock within the business.

glass

- Charlie45
 - With [REDACTED] (average is 1.2 per week) during week from 1/26 to 2/1 (p153x)
 1. And note cluster of 3 nearby in county




RepDate	OffenseCat	casenum1	address1	happened	Beat	(blank)	Closed	Open	Grand Total	
01/27/15	BurgResidence	2015000847	222 GLENN BRIDGE RD. AT: 27D	Occurred On Tue 1/27 10:00PM	InCounty		1		1	
01/28/15	BurgResidence	15002127	282 KENT DR	Occurred Between Wed 1/28 8:00AM and Wed 1:00PM Span of 5hours	Charlie 5			1	1	
01/29/15	BurgResidence	15002266	22 PONY EXPRESS DR KING'S KITCHEN/ 2270 HENDERSONVILLE RD.	Occurred Between Thu 1/29 7:40AM and Thu 2:00PM Span of 6hours 20minutes	Charlie 5			1	1	
01/30/15	BurgBusiness	15002303	AT: A	Occurred Between Thu 1/29 9:30PM and Fri 8:00AM Span of 10hours 30minutes	Charlie 5			1	1	
01/31/15	BurgBusiness	2015000970	2599 HENDERSONVILLE RD	Occurred Between Fri 1/30 5:00PM and Sat 8:45AM Span of 15hours 45minutes	InCounty			1	1	
		15002463	DAIRY QUEEN/ 2304 HENDERSONVILLE RD	Occurred Between Sat 1/31 11:00PM and Sat 11:27PM Span of 27minutes	Charlie 5			1	1	
02/02/15	BurgBusiness	2015001008	2603 HENDERSONVILLE RD	12hours 30minutes from Sat 1/31 8:30PM to Mon 2/2 9:00AM	InCounty	1			1	
		2015001002	2610 HENDERSONVILLE RD	17hours 30minutes from Sat 1/31 3:00PM to Mon 2/2 8:30AM	InCounty	1			1	
Grand Total							2	1	5	8

Ben Fulmer

From: eeads@ashevillenc.gov
Sent: Wednesday, January 28, 2015 7:40 PM
To: PoliceDistrictAWestSupervisors@ashevillenc.gov;
PoliceDistrictBNorth/EastSupervisors@ashevillenc.gov;
PoliceDistrictCSouth/CentralSupervisors@ashevillenc.gov
Cc: SBelcher@ashevillenc.gov; wwood@ashevillenc.gov; sgonce@ashevillenc.gov;
CReeceYoung@ashevillenc.gov; BGriffin@ashevillenc.gov; JStepp@ashevillenc.gov;
sriddle@ashevillenc.gov; SHendricks@ashevillenc.gov;
CRIMINVESTSUPV@ashevillenc.gov; dromick@ashevillenc.gov;
kmcculloch@ashevillenc.gov; spruett@ashevillenc.gov; afowler@ashevillenc.gov;
forensics@ashevillenc.gov; PoliceLieutenants@ashevillenc.gov;
KSkonieczny@ashevillenc.gov; TBrigman@ashevillenc.gov; RJustus@ashevillenc.gov;
SDavis@ashevillenc.gov; LLoveLace@ashevillenc.gov; CWells@ashevillenc.gov
Subject: Compstat Bulletin 1308
Attachments: Weeks_1307_1308.kmz; BaseLayers.kmz; DailyMap.kmz; Other_1307_1308_1309Partial.kmz; PublicHousing.kmz; TwoPlusWeeks_Adam.kmz; TwoPlusWeeks_Baker.kmz; TwoPlusWeeks_Charlie.kmz; Overview1308.pdf; PH_List2.pdf; A_List1.pdf; A_List2.pdf; B_List1.pdf; B_List2.pdf; C_List1.pdf; C_List2.pdf; County_List1.pdf; County_List2.pdf; PH_List1.pdf

Dates below are when the event was reported unless otherwise noted. Recent week 1308 is Mon 1/18 to Sun 1/25/15. Info in this bulletin shows system info as of 1/28/15 AM.

 indicates a spike where at least some of the events are, based on counts, quite likely to be related (none this week).

Other listed events indicate above average activity.

- **Citywide**
 - With 7 Robbery over a 5-day period, then 3 hits on successive days
 - Note also 3 County hits in same time period, east of city, with similar MO to city hits

RepDate	OffenseCat	casenum1	address1	happened	Beat	Closed	Open	Grand Total
01/16/16	RobbArmed	15001152	MARKET CENTER INC/ 3094 SWEETEN CREEK RD	Occurred On Fri 1/16 4:06AM	Charlie4		1	1
	RobbComLawF In	15001172	BANK OF NORTH CAROLINA/ 1999 HENDERSONVILLE RD.	Occurred On Fri 1/16 12:48PM	Charlie4		1	1
01/17/16	RobbArmed	15001297	ASHEVILLE BREWING COMPANY/ 77 COXE AVE	Occurred Between Sat 1/17 10:52PM and Sat 10:53PM Span of 1minutes	Charlie1		1	1
01/18/16	RobbArmed	15001361	121 MONTANA AVE	Occurred On Sun 1/18 8:35PM	Adam4		1	1
		15001342	GREENS COIN LAUNDRY AND LAUNDR/ 414 DEPOT	Occurred On Sun 1/18 5:06PM	Charlie2		1	1
01/20/16	RobbArmed	15001532	PARKWAY CROSSING APTS/ 102 LAMANCHA DR	Occurred On Tue 1/20 8:08PM	Baker3		1	1
		2015000601	501 OLD US 70 HWY	Occurred On Tue 1/20 8:30PM	InCount y		1	1
	RobbComLaw	15001445	HOT SPOT/ 79 ASHELAND AVE	Occurred On Tue 1/20 12:51AM	Charlie1		1	1
01/24/16	RobbComLaw	2015000717	1 ROCKET DR	Occurred On Fri 1/23 9:30PM	InCount y		1	1
		15001870	HOTEL INDIGO/ 151 HAYWOOD ST	Occurred On Sat 1/24 7:43PM	Charlie1	1		1
01/25/16	RobbArmed	15001938	302 S FRENCH BROAD AVE	Occurred On Sun 1/25 9:27PM	Charlie2		1	1
01/26/16	RobbArmed	15002001	CVS PHARMACY/ 11 RIVER RIDGE DR	Occurred On Mon 1/26 9:38PM	Baker3		1	1
		2015000821	1930 US 70 HWY	Occurred On Mon 1/26 9:59PM	InCount y		1	1
Grand Total						1	12	13

RepDate	OffenseCat	casenum1	address1	happened	Beat	Closed	Open	Grand Total
01/25/15	BurgResidence	15001896	SPRINGWOOD MHP/ 162 GOVERNORS VIEW RD, AT: 2	Occurred Between Sun 1/25 5:30AM and Sun 8:37AM Span of 3hours 7minutes	Baker3		1	1
	Burg1stDegree	15001941	SUPER 8/ 180 TUNNEL RD, AT: 114	Occurred On Wed 1/21 4:02AM	Baker4		1	1
	BurgOther	15001918	38 PENNSYLVANIA AVE	Occurred Between Sat 1/24 11:00PM and Sun 3:16PM Span of 16hours 16minutes	Adam4		1	1
		15001889	122 RICHMOND AVE	Occurred On Sun 1/25 1:21AM	Adam4	1		1
		15001908	118 RICHMOND AVE	Occurred Between Sat 1/24 10:00PM and Sun 12:47PM Span of 14hours 47minutes	Adam4		1	1
Grand Total						1	4	5

- With 35 Larceny (average is 26.2) during week from 1/19 to 1/25
 1. These were particularly high on Thu 1/22 with 9 hits (average is 3.4), though scattered geographically
 2. 7 hits on each of the following days: Wed 1/21, Sat 1/24, Mon 1/26, Tue 1/27

- Public Housing

- With Lee Walker with 3 Property Crime (average is 0.5) during week from 1/19 to 1/25

- Downtown

- With 3 Robbery during two weeks from 1/12 to 1/25 (see above)

- Adam14

- With no spike activity

- Adam23

- With 12 Larceny (average is 5.8) during two weeks from 1/12 to 1/25.
- 7 of these occurred from 1/19 to 1/25. 15001444 and 15001612 are in close proximity, similar for 15001531 and 15001731

RepDate	OffenseCat	casenum1	address1	happened	Beat	Suspended	Open	Grand Total
01/19/15	Larceny	15001444	ROADRUNNER MARKET #150/ 295 SMOKEY PARK HWY	Occurred On Mon 1/19 11:46PM	Adam2		1	1
01/20/15	Larceny	15001531	ASHEVILLE METAL & RECYCLING/ 28 CANE ST, AT: 7	Occurred On Tue 1/20 6:10PM	Adam2	1		1
01/21/15	Larceny	15001612	SMOKEY MOUNTAIN AUTO SERVICE/ 9 CROWELL RD	15hours 1minutes from Sat 11/1 12:00AM to Wed 1/21 3:01PM	Adam2	1		1
01/22/15	Larceny	15001731	GOODWILL INDUSTRIES/ 1616 PATTON AVE	Occur time spans 26days 19hours 47minutes from Sat 12/27 12:00AM to Thu 1/22 7:47PM	Adam3		1	1
Grand Total						2	2	4

- Baker12

- With 5 Burglary (average is 2.2) during week from 1/19 to 1/25
- Also note case 15002039 at 54 North Street 1/27. And, received call from resident of 30 Monroe who indicated there was an attempted B&E at his address the morning of the 1/17, with similar MO to the 60 Holland event wherein attempt to enter was made when residents at home.

RepDate	OffenseCat	casenum1	address1	happened	Beat	Open	Grand Total
01/19/15	BurgBusiness	15001381	YOLO/ 505 MERRIMON AVE	Occurred Between Sun 1/18 10:32PM and Mon 9:00AM Span of 10hours 28minutes	Baker2	1	1
01/20/15	BurgResidence	15001535	32 WESTHAVEN DR	Occurred On Tue 1/20 9:20PM	Baker2	1	1
		15001456	60 HOLLAND ST	Occurred On Tue 1/20 7:48AM	Baker1	1	1
01/21/15	BurgResidence	15001561	303 COUNTRY CLUB RD	7:59AM	Baker2	1	1
01/22/15	BurgResidence	15001736	400 CUMBERLAND AVE	Occurred Between Thu 1/22 9:30PM and Thu 10:00PM Span of 30minutes	Baker1	1	1
Grand Total						5	5

casenum1	
15001381	Suspect smashed out the front door of the business using a cinder block. Cash was reported missing from the register
15001535	Once inside we located a brick next to the refrigerator that was used to break the kitchen window. McKibbons stated that this was the second time his house has been broken into in a year
15001456	he and his wife heard a knock at his front door at approximately 2230hrs on 01/19/15. Mr. Cameron said that he turned on his porch light to see who was knocking at his door but when he opened up his door, he didn't see anyone. At the time, he said that he didn't think anything of it. When he exited his front door this morning, he immediately noticed that the door handle to his front screen door had been broken in two, as if someone attempted to force open the screen door which he normally keeps locked
15001561	were the first to the residence and found the back door cracked about 4 inches. Burnette told me they walked through the house to make sure no was still inside and noticed that a TV was missing
15001736	After the victim got off of the phone, she discovered that a rock had been thrown through the downstairs window

- Baker12

- With cluster of 5 Larceny hits in Grove Park Area over last couple days, especially Mon 1/26

RepDate	OffenseCat	casenum1	address1	happened	Beat	Span	Grand Total
01/26/15	Larceny	15001985	GROVE PARK INN/ 290 MACON AVE	Occurred Between Thu 12/4 7:30AM and Thu 5:00PM. Span of 9hours 30minutes	Baker2	1	1
		15001968	31 GRIFFING CIR	Occur time spans 41days 7hours 30minutes from Tue 11/25 8:00AM to Mon 1/5 3:30PM	Baker2	1	1
		15001984	GROVE PARK INN/ 290 MACON AVE	Occurred Between Mon 12/29 12:15PM and Mon 5:30PM Span of 5hours 15minutes	Baker2	1	1
		15001970	GROVE PARK INN/ 290 MACON AVE	Occurred On Mon 1/26 11:52AM	Baker2	1	1
01/27/15	Larceny	15002014	GROVE PARK INN/ 290 MACON AVE	Occurred Between Thu 12/11 8:00AM and Thu 5:00PM Span of 9hours	Baker2	1	1
Grand Total						5	5

- Baker34
 - With 3 Larceny (average is 0.8) on Wed 1/21
- Charlie12
 - With 5 Robbery (average is 2.0) during two weeks from 1/12 to 1/25 (see above)
 - With 12 Larceny (average is 6.2) during week from 1/19 to 1/25
- Charlie3
 - With no spike activity
- Charlie45
 - With no spike activity

Ed Eads
Crime Analyst
Asheville Police Department
NC 828 259-5883
eeads@ashevillenc.gov




Think Green! Please do not print this e-mail unless necessary

Confidentiality Notice: This email message, including any attachments, is for the sole use of the intended recipient(s) and may contain confidential and privileged information. Any unauthorized use, disclosure, or distribution is prohibited.

Ben Fulmer

From: eeads@ashevillenc.gov
Sent: Wednesday, January 14, 2015 5:42 PM
To: PoliceDistrictAWestSupervisors@ashevillenc.gov;
 PoliceDistrictBNorth/EastSupervisors@ashevillenc.gov;
 PoliceDistrictCSouth/CentralSupervisors@ashevillenc.gov
Cc: wwood@ashevillenc.gov; sgonce@ashevillenc.gov; CReeceYoung@ashevillenc.gov;
 BGriffin@ashevillenc.gov; JStapp@ashevillenc.gov; sriddle@ashevillenc.gov;
 SHendricks@ashevillenc.gov; CRIMINVESTSUPV@ashevillenc.gov;
 dromick@ashevillenc.gov; kmcculloch@ashevillenc.gov; spruett@ashevillenc.gov;
 afowler@ashevillenc.gov; forensics@ashevillenc.gov; PoliceLieutenants@ashevillenc.gov;
 KSkonieczny@ashevillenc.gov; TBrigman@ashevillenc.gov; RJustus@ashevillenc.gov;
 SDavis@ashevillenc.gov; LLovelace@ashevillenc.gov; CWells@ashevillenc.gov
Subject: Compstat Bulletin 1306
Attachments: BaseLayers.kmz; Weeks_1305_1306.kmz; DailyMap.kmz; TwoPlusWeeks_Charlie.kmz;
 TwoPlusWeeks_Adam.kmz; TwoPlusWeeks_Baker.kmz; PublicHousing.kmz; Other_1305_1306_1307Partial.kmz; PH_List2.pdf; A_List1.pdf; A_List2.pdf; B_List1.pdf; B_List2.pdf; C_List1.pdf; C_List2.pdf; County_List1.pdf; County_List2.pdf; PH_List1.pdf

Dates below are when the event was reported unless otherwise noted. Recent week 1306 is Mon 1/5 to Sun 1/11/15.

 indicates a spike where at least some of the events are quite likely to be related.

- Citywide
 - With 14 Robbery (average is 7.2) during two weeks from 12/29 to 1/11
- Public Housing
 - Aston Towers with 2 Property Crimes (average is 0.5) during week from 1/5 to 1/11
 - Erskine with 2 Property Crimes (average is 0.3) during week from 1/5 to 1/11

RepDate	OffenseCat	casenum1	address1	happened	Beat	Suspended	Open	Cri and Total
01/08/15	CarBandE_B	15000540	4 ERSKINE ST. AT: A	Occurred Between Thu 1/8 10:00AM and Thu 2:30PM Span of 4hours 30minutes	Charlie2		1	1
01/09/15	VandalismCar	15000597	63 ERSKINE ST. AT: C	Occurred Between Thu 1/8 7:00PM and Fri 8:12AM Span of 13hours 12minutes	Charlie2	1		1
Grand Total							1	2

- One involved removing wheels and tires, the other slashed tires
- Downtown
 - With no spike activity
- Adam14
 - With no spike activity
- Adam23

- [REDACTED] (average is 0.3) on Tue 1/5 (p223)

RepDate	OffenseCat	casenum1	address1	happened	Best	Offense Count	Grand Total
01/06/15	BurgResidence	15000427	3 RHUDY RD	Occurred Between Tue 1/6 9:00AM and Tue 12:30PM Span of 3hours 38minutes	Adam2	1	1
		15000412	36 DEEVER PARK CIR	Occurred On Tue 1/6 10:17PM	Adam2	1	1
Grand Total							2

- Both events in close proximity, both cut kitchen screen window

- Baker12

- With no spike activity

- Baker34

- With no spike activity

- Charlie12

- With 2 Rape (average is 0.3) during week from 1/5 to 1/11 (both juvenile victims)

- Charlie3

- With 2 Robbery (average is 0.3) during two weeks from 12/29 to 1/11

- [REDACTED] (average is 0.8) during weeks from 1/5 to 1/11 (p152)

RepDate	OffenseCat	casenum1	address1	happened	Best	Offense Count	Grand Total
01/05/15	BurgBusiness	15000280	485 HENDERSONVILLE RD	Occur time spans 1days 7hours 38minutes from Sat 1/3 11:00PM to Mon 1/5 6:38AM	Charlie3	1	1
01/10/15	BurgBusiness	15000690	485 HENDERSONVILLE RD	Occurred Between Fri 1/9 11:00PM and Sat 7:00AM Span of 8hours	Charlie3	1	1
01/11/15	BurgResidence	15000300	571 CARIBOU RD	Occur time spans 57days 16hours 33minutes from Sat 11/15 12:00AM to Sun 1/11 4:33PM	Charlie3	1	1
Grand Total							3

1. 15000280. Apollo Flame patio door pried open. Cash/coin from register
2. 15000690. Broke into storm door of front patio. Cash/coin/beer, removed DVR recording system.

- Charlie45

- With 2 Robbery (average is 0.6) during two weeks from 12/29 to 1/11

Ed Eads
 Crime Analyst
 Asheville Police Department
 NC 828 259-5883
eads@ashevillenc.gov

Think Green! Please do not print this e-mail unless necessary

Confidentiality Notice: This email message, including any attachments, is for the sole use of the intended recipient(s) and may contain confidential and privileged information. Any unauthorized use, disclosure, or distribution is prohibited.