


Ben Fulmer

From: eeads@ashevillenc.gov
Sent: Tuesday, September 01, 2015 1:05 PM
To: PoliceDistrictAWestSupervisors@ashevillenc.gov;
PoliceNorth/EastDistrictSupervisors@ashevillenc.gov;
PoliceSouth/CentralDistrictSupervisors@ashevillenc.gov
Cc: THooper@ashevillenc.gov; SBelcher@ashevillenc.gov; wwood@ashevillenc.gov;
sgonce@ashevillenc.gov; CReeceYoung@ashevillenc.gov; BGriffin@ashevillenc.gov;
JStapp@ashevillenc.gov; sriddle@ashevillenc.gov; SHendricks@ashevillenc.gov;
CRIMINVESTSUPV@ashevillenc.gov; dromick@ashevillenc.gov;
kmcculloch@ashevillenc.gov; spruett@ashevillenc.gov; afowler@ashevillenc.gov;
forensics@ashevillenc.gov; PoliceLieutenants@ashevillenc.gov;
KSkonieczny@ashevillenc.gov; TBrigman@ashevillenc.gov; RJustus@ashevillenc.gov;
SDavis@ashevillenc.gov; LLoveLace@ashevillenc.gov; CWells@ashevillenc.gov;
HSilberman@ashevillenc.gov
Subject: Compstat Bulletin 1339
Attachments: Overview_1339.pdf; TwoPlusWeeks_Charlie.kmz; TwoPlusWeeks_Adam.kmz;
TwoPlusWeeks_Baker.kmz

The G-drive contains reference information at G:\APD\Compstat. Look for the folder named Bulletin1339.

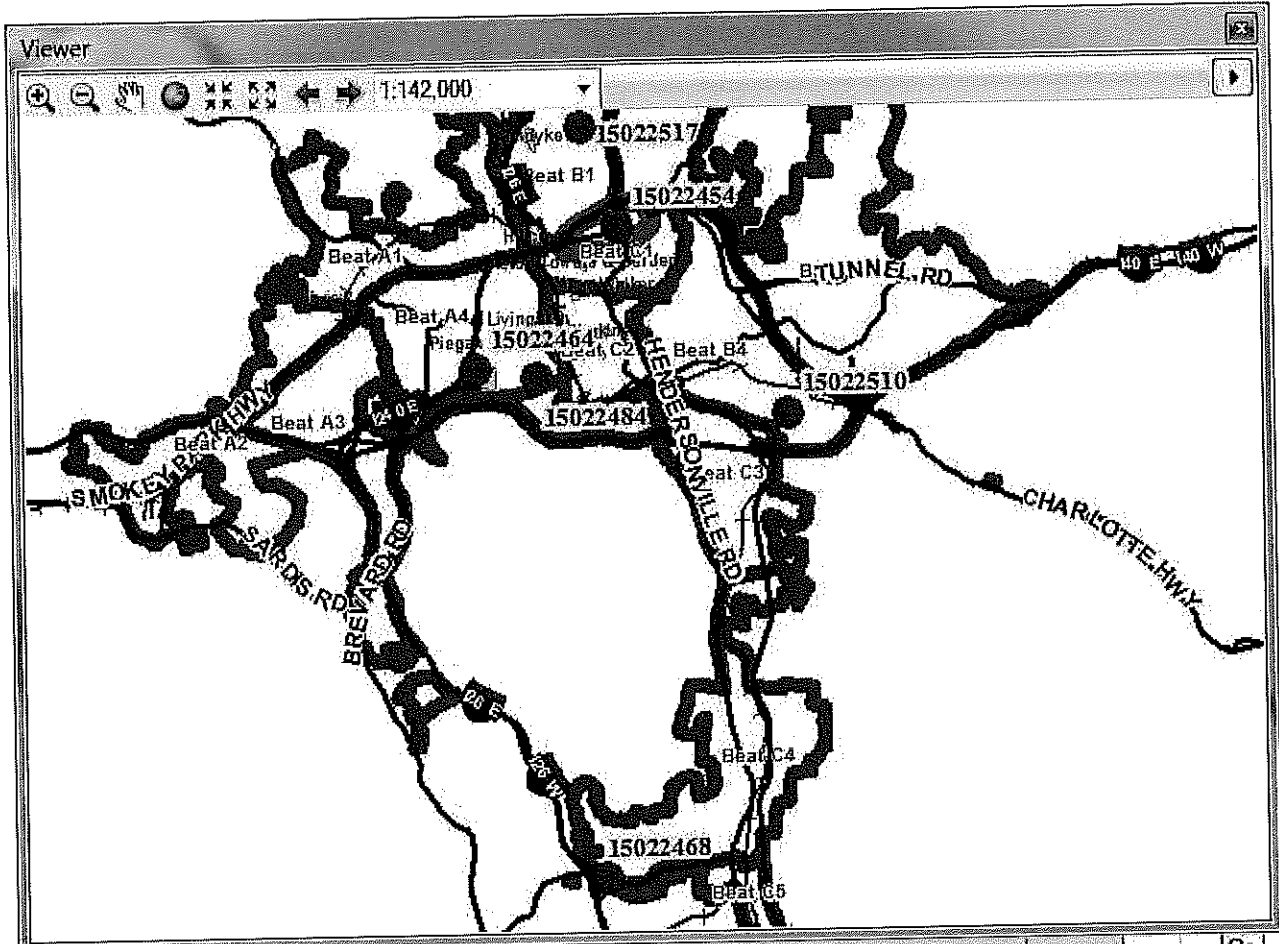
Dates below are when the event was reported unless otherwise noted. Info in this bulletin contains RMS system info as of early Tuesday morning 9/1/15. If no events are listed for a particular region, there was no spike activity in that region during the recent week.

	Week #	Mon	Tue	Wed	Thu	Fri	Sat	Sun
Prior Week	1338	8/17	8/18	8/19	8/20	8/21	8/22	8/23
Recent Week	1339	8/24	8/25	8/26	8/27	8/28	8/29	8/30
Current Week	1340	8/31	9/1	9/2	9/3	9/4	9/5	9/6

 indicates a spike where at least some of the events, based on counts, are quite likely to have a similar cause.

Other listed events simply indicate above average activity and may or may not be related.

- **Citywide**
 - **Citywide.** There were 6 Non-domestic Simple Assaults reported on Sun 8/30. The typical average is 1.9 per day.
 - See G:\APD\Compstat\Bulletin1339\SikeInfo\ "02" files.



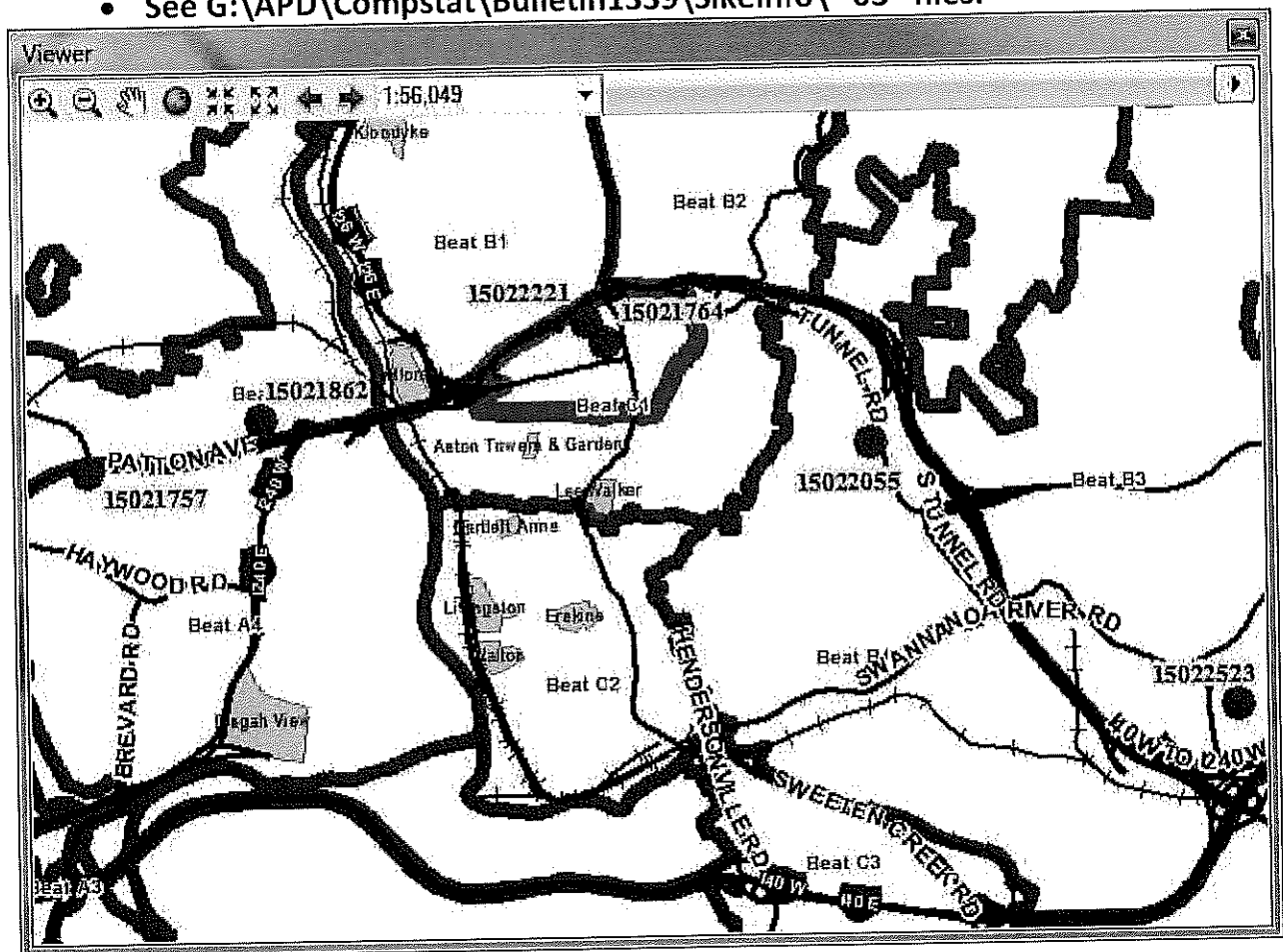
RepDate	OffenseCd	casenum1	address1	happened	Beat	(blank)	Cl os ed	Gr an d Tot al	
Sun 08/30/15	Simple_NotDomestic	15022517	WNC NANTAHALA APARTMENTS/ 5 NANTAHALA ST, AT: 9	Occurred On Sun 8/30 10:20PM	Baker1		1	1	
		15022464	PISGAH VIEW APTS/ 1 GRANADA ST, AT: 25-C	Occurred On Sun 8/30 1:59AM	Adam4		1	1	
		15022484	106 JOYNER AVE	Occurred On Sun 8/30 12:34PM	Adam4	1		1	
		15022468	HOUSE/ 371 LONG SHOALS RD	Occurred On Sun 8/30 3:50AM	Charlie5		1	1	
		15022454	ST/ N LEXINGTON AVE	Occurred On Sun 8/30 12:14AM	Charlie1		1	1	
		15022510	OAKLEY PARK/ 715 FAIRVIEW RD	8/30 8:30PM and Sun 8:31PM Span of 1minutes	Baker4		1	1	
Grand Total							1	5	6

Day of Week / Time of Day.

...6 of the 6 incidents, or 100%, had found/secure times within 12 hours.

Hour Range	1Mon	2Tue	3Wed	4Thu	5Fri	6Sat	7Sun	ByHour
00:00-03:00	0%	0%	0%	0%	0%	0%	33%	33%
03:00-06:00	0%	0%	0%	0%	0%	0%	17%	17%
06:00-09:00	0%	0%	0%	0%	0%	0%	0%	0%
09:00-12:00	0%	0%	0%	0%	0%	0%	0%	0%
12:00-15:00	0%	0%	0%	0%	0%	0%	17%	17%
15:00-18:00	0%	0%	0%	0%	0%	0%	0%	0%
18:00-21:00	0%	0%	0%	0%	0%	0%	17%	17%
21:00-24:00	0%	0%	0%	0%	0%	0%	17%	17%
ByDay	0%	0%	0%	0%	0%	0%	100%	100%

- Citywide. There were 6 Business Burglary along the Patton Ave – I240 – Tunnel Rd roadway during the week from Mon 8/24 to Sun 8/30.
- See G:\APD\Compstat\Bulletin1339\SikeInfo\ "03" files.



RepDate	OffenseCat	casenum1	address1	happened	Beat	(blank)	Closed	Open	Grand Total	
Mon 08/24/15	BurgBusiness	15021764	19 RANKIN AVE	8/23 3:30PM and Mon 8:30AM Span of 17hours	Charlie1			1	1	
		15021757	ALANS JEWELRY AND PAWN/ 1186 PATTON AVE	Occurred Between Mon 8/24 3:36AM and Mon 7:54AM Span of 4hours 18minutes	Adam4			1	1	
Tue 08/25/15	BurgBusiness	15021862	YOSHIDA/ 4 REGENT PARK BLVD	Occurred On Tue 8/25 9:48AM	Adam1			1	1	
Wed 08/26/15	BurgBusiness	15022055	MOUNTAINEER COURT/ 155 TUNNEL RD	Occurred On Wed 8/26 2:46PM	Baker4		1		1	
Thu 08/27/15	BurgBusiness	15022221	ASHEVILLE CIVIC CENTER/ 87 HAYWOOD ST	Occurred Between Thu 8/27 10:30PM and Thu 10:39PM Span of 9minutes	Charlie1		1		1	
Mon 08/31/15	BurgBusiness	15022523	BREWING/ 12 OLD CHARLOTTE HWY	Occurred On Mon 8/31 6:01AM	Baker3	1			1	
Grand Total							1	2	3	6

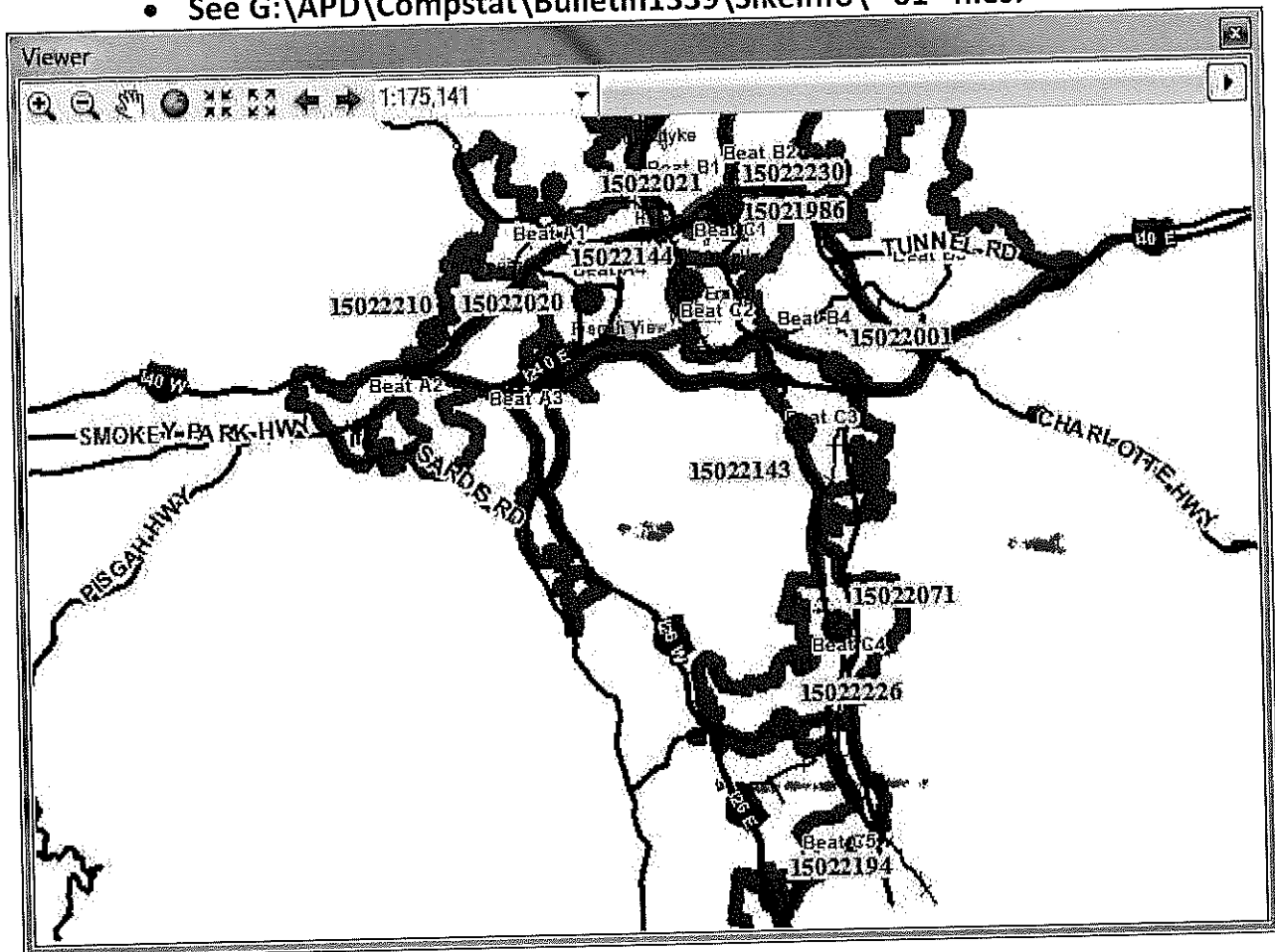
RepDate	OffenseCat	casenum1	APD	
08/24/15	BurgBusiness	15021764	1	Victim reported suspect(s) entered the building and damaged the inside with graffiti markings. The markings appeared to be letters and symbols of "RP" and "STON".
		15021757	1	Moments later the shelf is moved and a person is seen crawling in through the hole with a light colored bag in his hand. He low crawls across the floor towards the door, looking in the direction of the camera only once. He is wearing a white hoodie, dark pants, and black and white shoes. He appears to have something around the top of his head, sunglasses on, and something wrapped around the lower half of his face. He opens the door and crawls into the jewelry showcase area.
08/25/15	BurgBusiness	15021862	1	██████████ stated that the door had been pried open with a shovel that was left behind on the ground just outside the door. ██████████ stated that she had left \$400.00 in the front register near the front entrance door, and \$200.00 in the register at the bar. ██████████ stated that \$600.00 total was missing from the registers.
08/26/15	BurgBusiness	15022055	1	gray Ford 500 was leaving the premises. Caller stated that three girls got into the car and left the scene, and the went across the road to the Shell station. Officers Wall and Collins arrived at the Shell where they detained the subjects.
08/27/15	BurgBusiness	15022221	1	Civic Center. Upon entry into the roof area Sheehan and other officers observed ██████████ inside the enclosed area of the civic center. All three were detained without incident and a further search of the business was conducted.
08/31/15	BurgBusiness	15022523	1	window had been broken into. He also stated that two safes had been broken into along with three registers.

Day of Week / Time of Day.

...5 of the 6 incidents, or 83%, had found/secure times within 12 hours.

Hour Range	1Mon	2Tue	3Wed	4Thu	5Fri	6Sat	7Sun	By Hour
00:00-03:00	0%	0%	0%	0%	0%	0%	0%	0%
03:00-06:00	27%	0%	0%	0%	0%	0%	0%	27%
06:00-09:00	32%	0%	0%	0%	0%	0%	0%	32%
09:00-12:00	0%	14%	0%	0%	0%	0%	0%	14%
12:00-15:00	0%	0%	14%	0%	0%	0%	0%	14%
15:00-18:00	0%	0%	0%	0%	0%	0%	0%	0%
18:00-21:00	0%	0%	0%	0%	0%	0%	0%	0%
21:00-24:00	0%	0%	0%	13%	0%	0%	0%	13%
By Day	59%	14%	14%	13%	0%	0%	0%	100%

- Citywide. There were 5 Vandalism-Other on Wed 8/26, and 6 reported on Thu 8/27. The typical citywide average is 2.2 per day.
- See G:\APD\Compstat\Bulletin1339\SikeInfo\ "01" files.



Day of Week / Time of Day.

...9 of the 11 incidents, or 82%, had found/secure times within 12 hours.

Hour Range	1Mon	2Tue	3Wed	4Thu	5Fri	6Sat	7Sun	ByHour
00:00-03:00	0%	0%	8%	0%	0%	0%	0%	8%
03:00-06:00	0%	0%	12%	0%	0%	0%	0%	12%
06:00-09:00	0%	0%	5%	0%	0%	0%	0%	5%
09:00-12:00	0%	0%	0%	0%	0%	0%	0%	0%
12:00-15:00	0%	0%	4%	10%	0%	0%	0%	14%
15:00-18:00	0%	0%	4%	10%	0%	0%	0%	14%
18:00-21:00	0%	0%	0%	6%	0%	0%	0%	6%
21:00-24:00	0%	26%	0%	14%	0%	0%	0%	40%
ByDay	0%	26%	34%	40%	0%	0%	0%	100%

- **Downtown**
 - **Downtown.**

- **Public Housing**
 - **Public Housing.**

- **Adam1 and Adam4**
 - **Adam1 and Adam4.**

- **Adam2 and Adam3**
 - **Adam2 and Adam3.**

- **Baker1 and Baker2**
 - **Baker1 and Baker2.**

- **Baker3 and Baker4**
 - **Baker3 and Baker4.**

- **Charlie1 and Charlie2**
 - **Charlie1 and Charlie2.**

- **Charlie3**
 - **Charlie3.**

- Charlie4 and Charlie5
 - Charlie4 and Charlie5.

Ed Eads
Crime Analyst
Asheville Police Department
828 259-5883
eeads@ashevillenc.gov



Think Green! Please do not print this e-mail unless necessary

Confidentiality Notice: This email message, including any attachments, is for the sole use of the intended recipient(s) and may contain confidential and privileged information. Any unauthorized use, disclosure, or distribution is prohibited.

Ben Fulmer

From: GGudac@ashevillenc.gov
Sent: Wednesday, August 26, 2015 4:57 PM
To: SDavis@ashevillenc.gov; LLovelace@ashevillenc.gov
Subject: FW: Compstat Bulletin 1338
Attachments: Overview_1338.pdf; TwoPlusWeeks_Charlie.kmz; TwoPlusWeeks_Adam.kmz; TwoPlusWeeks_Baker.kmz

I know you guys get this one. Does anyone send it out District Wide?

From: Ed Eads
Sent: Tuesday, August 25, 2015 7:21 PM
To: Police West District Supervisors; Police North/East District Supervisors; Police South/Central District Supervisors
Cc: Tammy Hooper; Wade Wood; Captain Stony Gonce; Captain Chris Reece-Young; Sgt. Brien Griffin; Sgt. Jackie Stepp; Sgt. Steve Riddle; Steven Hendricks; Criminal Investigation Supervisors; Sgt. Dave Romick; Keith McCulloch; Sgt. Scott Pruet; Sgt. Ann Fowler; Forensics; Police Lieutenants; Kevin Skonieczny; Todd Brigman; Ryan Justus; Sean Davis; Lucas Lovelace; Sgt. Charles Wells; Hannah Silberman
Subject: Compstat Bulletin 1338

The G-drive contains reference information at G:\APD\Compstat. Look for the folder named Bulletin1338.

Dates below are when the event was reported unless otherwise noted. Info in this bulletin contains RMS system info as of early Tuesday morning 8/25/15.

	Week #	Mon	Tue	Wed	Thu	Fri	Sat	Sun
Prior Week	1337	8/10	8/11	8/12	8/13	8/14	8/15	8/16
Recent Week	1338	8/17	8/18	8/19	8/20	8/21	8/22	8/23
Current Week	1339	8/24	8/25	8/26	8/27	8/28	8/29	8/30

[REDACTED] indicates a spike where at least some of the events, based on counts, are quite likely to have a similar cause.

Other listed events simply indicate above average activity and may or may not be related.

- Citywide
 - Citywide. No spike activity.
- Downtown
 - Downtown and nearby – there were 4 Robbery events during the week from Mon 8/17 to Sun 8/23. Two were Armed and two were Common Law. Both of the Common Law Robberies occurred on Fri 8/21.
 - See G:\APD\Compstat\Bulletin1338\SikeInfo\ “03” files..

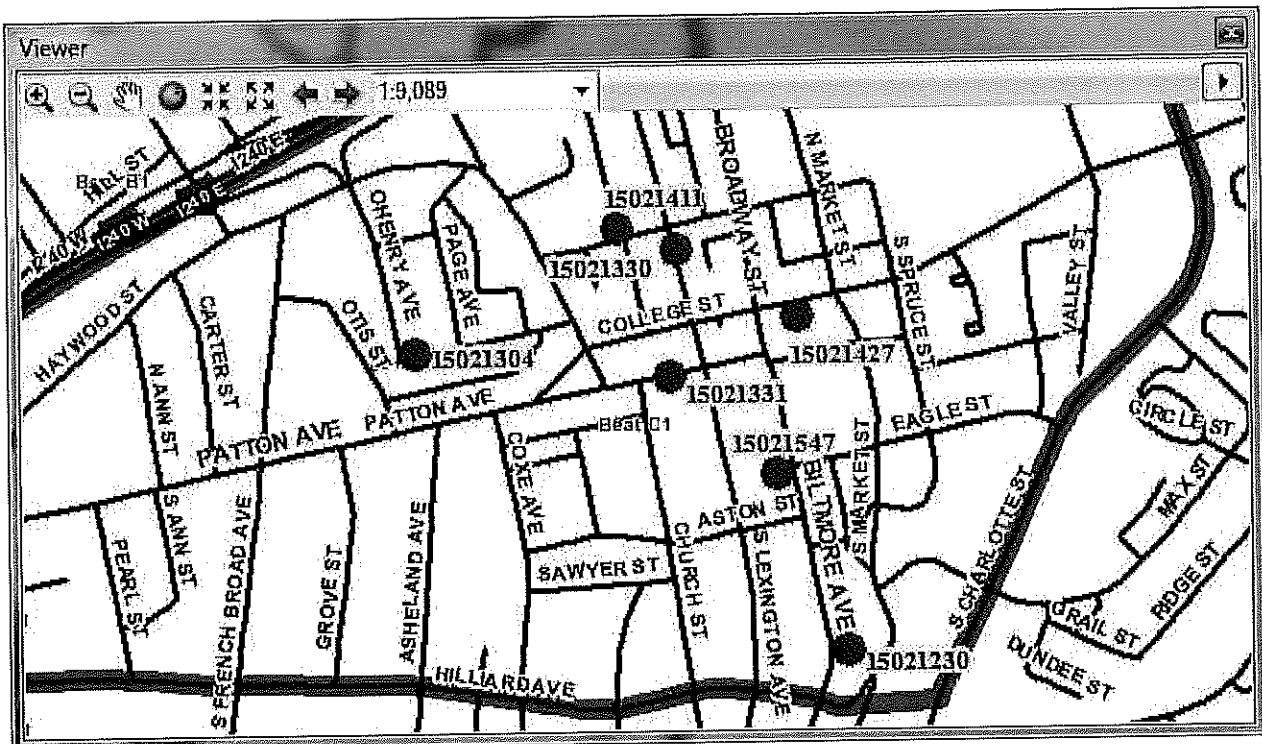
- These appear to be similar to the spike in events during the week from Mon 7/27 to Sun 8/2 of bulletin 1335 – see below for descriptions.



RepDate	OffenseCd	casenum1	address1	happened	Beat	(blank)	Closed	Open	Suspended	Grand Total	
Mon 08/17/15	RobbArmed	15021119	MISSION HOSPITAL/ 165 S FRENCH BROAD AVE	Occurred On Mon 8/17 3:00AM	Charlie1			1		1	
Fri 08/21/15	RobbComLaw	15021582	SALVATION ARMY/ 204 HAYWOOD ST	8/21 9:40PM and Fri 9:45PM Span of 5minutes	Charlie1				1	1	
		15021490	41 BILTMORE AVE/ASTON ST	8/21 1:05AM and Fri 1:10AM Span of 5minutes	Charlie1		1			1	
Sun 08/23/15	RobbArmed	15021709	HOT SPOT/ 79 ASHELAND AVE	Occurred Between Sun 8/23 1:30AM and Sun 7:18AM Span of 5hours 48minutes	Charlie1		1			1	
Grand Total							1	1	1	1	4

The following are descriptions of events that occurred during the week from Mon 8/17 to Sun 8/23.

- Downtown. For a second week in a row there has been 7 Graffiti events each week. The average is 3.1 per week.
 - See G:\APD\Compstat\Bulletin1338\SikeInfo\ "04" files for the events from Mon 8/17 to Sun 8/23.
 - See G:\APD\Compstat\Bulletin1337\SikeInfo\ "03" files for the events from Mon 8/10 to Sun 8/16.
 - There is a tendency for the events to occur on Thursdays from early morning until noon. See chart below.



The following chart is for the events in both weeks.

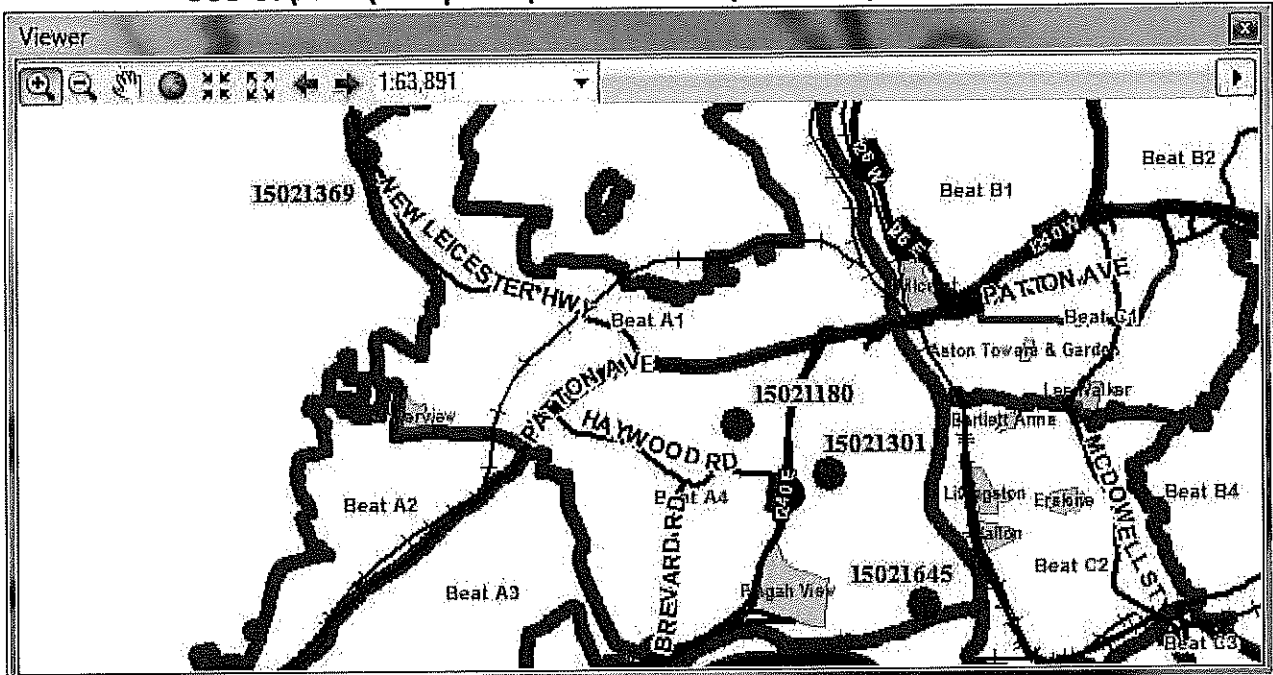
Day of Week / Time of Day.

...8 of the 14 incidents, or 57%, had found/secure times within 12 hours.

Hour Range	1Mon	2Tue	3Wed	4Thu	5Fri	6Sat	7Sun	By Hour
00:00-03:00	0%	0%	0%	7%	0%	0%	0%	7%
03:00-06:00	0%	0%	0%	15%	0%	0%	0%	15%
06:00-09:00	0%	0%	0%	36%	0%	0%	0%	36%
09:00-12:00	0%	0%	0%	22%	0%	0%	0%	22%
12:00-15:00	0%	0%	20%	0%	0%	0%	0%	20%
15:00-18:00	0%	0%	0%	0%	0%	0%	0%	0%
18:00-21:00	0%	0%	0%	0%	0%	0%	0%	0%
21:00-24:00	0%	0%	0%	0%	0%	0%	0%	0%
By Day	0%	0%	20%	80%	0%	0%	0%	100%

- Public Housing

- Public Housing. No spike activity.
- Adam1 and Adam4
 - Adam1 and Adam4. There were 4 Stolen Vehicles_Car/SUV/Truck during the week from Mon 8/17 to Sun 8/23. The typical average is less than one per week.
 - See G:\APD\Compstat\Bulletin1338\SikeInfo\ "02" files..



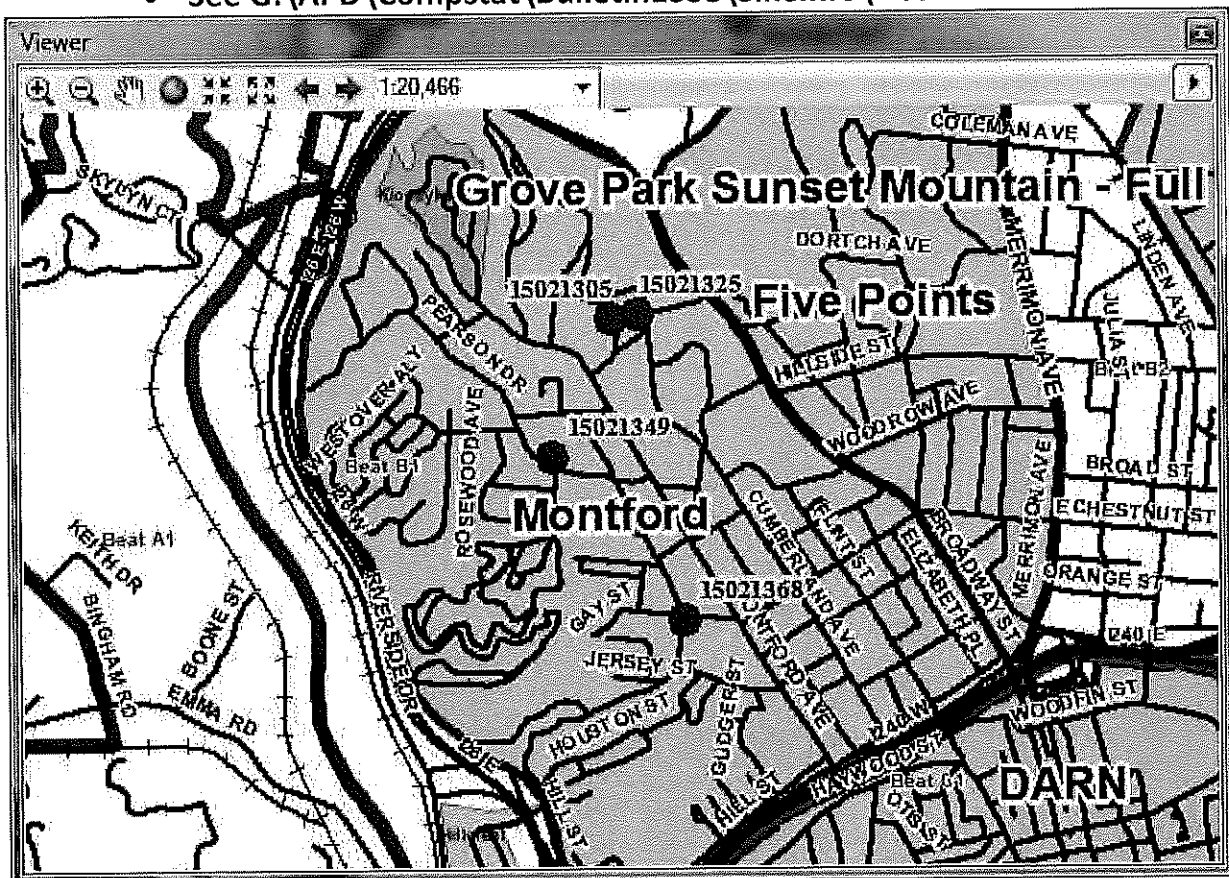
RepDate	OffenseC	casenum1	address1	happened	Beat	Open	Grand Total
Mon 08/17/15	StVeh_Car/SUV/Truck	15021180	32 FLORIDA AVE	Occur time spans 1days 10hours from Sat 7/25 11:00PM to Mon 7/27 9:00AM	Adam4	1	1
Wed 08/19/15	StVeh_Car/SUV/Truck	15021301	298 WAYNESVILLE AVE	Occurred Between Tue 8/18 11:30PM and Wed 8/19 9:00AM Span of 9hours 30minutes	Adam4	1	1
		15021369	WESTSIDE/ 372 NEW LEICESTER HWY	Occurred Between Wed 8/19 5:00PM and Wed 8/19 7:34PM Span of 2hours 34minutes	Adam1	1	1
Sat 08/22/15	r/SUV/Truck	15021645	100 JOYNER AVE	Occurred On Sat 8/22 4:51PM	Adam4	1	1
Grand Total						4	4

Day of Week / Time of Day.

...3 of the 4 incidents, or 75%, had found/secure times within 12 hours.

Hour Range	1Mon	2Tue	3Wed	4Thu	5Fri	6Sat	7Sun	ByHour
00:00-03:00	0%	0%	9%	0%	0%	0%	0%	9%
03:00-06:00	0%	0%	9%	0%	0%	0%	0%	9%
06:00-09:00	0%	0%	9%	0%	0%	0%	0%	9%
09:00-12:00	0%	0%	0%	0%	0%	0%	0%	0%
12:00-15:00	0%	0%	0%	0%	0%	0%	0%	0%
15:00-18:00	0%	0%	6%	0%	0%	40%	0%	46%
18:00-21:00	0%	0%	13%	0%	0%	0%	0%	13%
21:00-24:00	0%	15%	0%	0%	0%	0%	0%	15%
ByDay	0%	15%	45%	0%	0%	40%	0%	100%

- Adam2 and Adam3
 - Adam2 and Adam3. No spike activity.
- Baker1 and Baker2
 - Baker1's Montford neighborhood. There were [REDACTED] reported on the same day. It's quite likely that all of these occurred from late Tue 8/18 to early Wed 8/19.
 - See G:\APD\Compstat\Bulletin1338\SikeInfo\ "05" files.



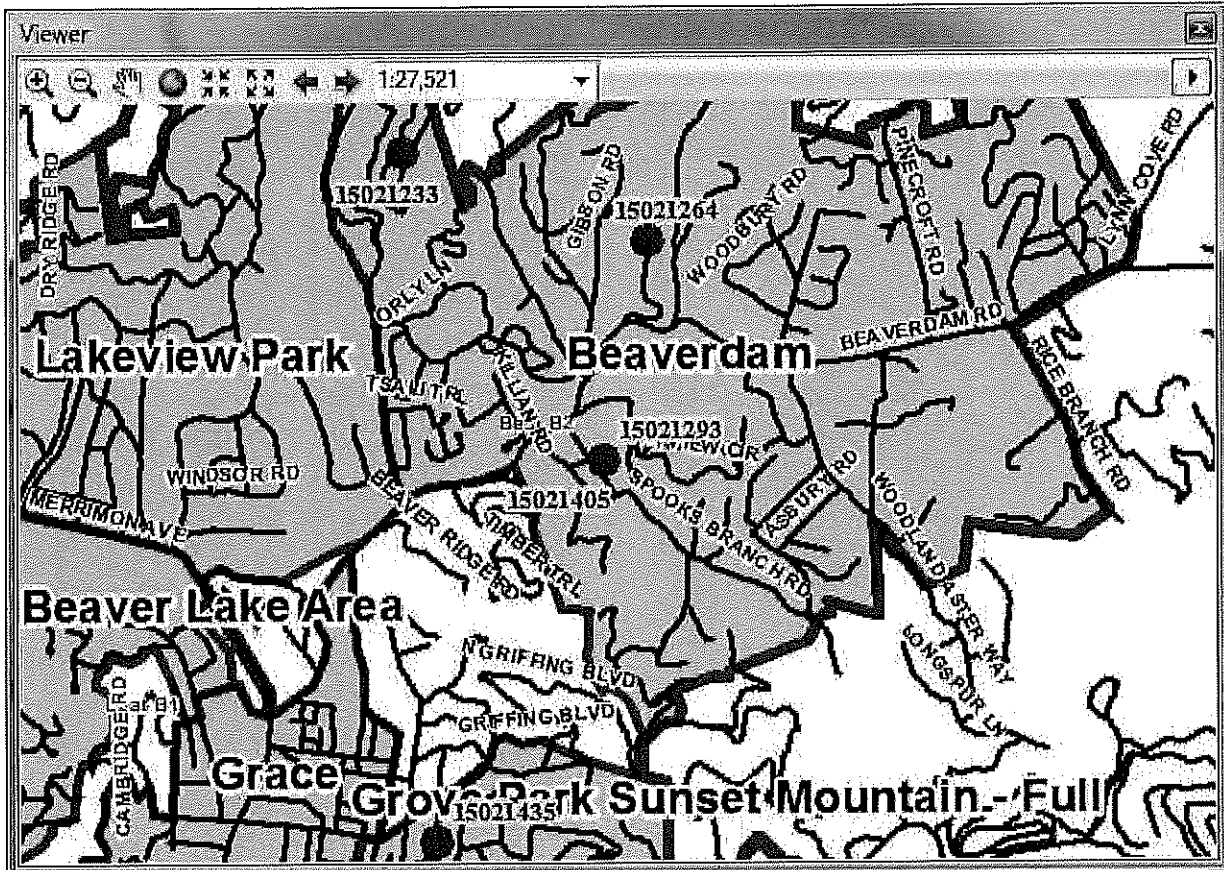
RepDate	OffenseC	casenum1	address1	happened	Beat	Open	Su sp en de d	Gr an d Tot al
Wed 08/19/15	CarBandE _L	15021368	184 W CHESTNUT ST	Occur time spans 1days 16hours 30minutes from Mon 8/17 6:00PM to Wed 8/19 10:30AM	Baker1	1		1
		15021325	362 CUMBERLAND AVE	Occurred Between Tue 8/18 7:00PM and Wed 10:30AM Span of 15hours 30minutes	Baker1		1	1
		15021349	189 PEARSON DR	Occurred Between Tue 8/18 11:30PM and Wed 10:00AM Span of 10hours 30minutes	Baker1	1		1
		15021305	45 PANOLA ST	Occurred Between Tue 8/18 11:00PM and Wed 7:40AM Span of 8hours 40minutes	Baker1	1		1
Grand Total						3	1	4

Day of Week / Time of Day.

...2 of the 4 incidents, or 50%, had found/secure times within 12 hours.

Hour Range	1Mon	2Tue	3Wed	4Thu	5Fri	6Sat	7Sun	ByHour
00:00-03:00	0%	0%	18%	0%	0%	0%	0%	18%
03:00-06:00	0%	0%	18%	0%	0%	0%	0%	18%
06:00-09:00	0%	0%	14%	0%	0%	0%	0%	14%
09:00-12:00	0%	0%	3%	0%	0%	0%	0%	3%
12:00-15:00	0%	0%	0%	0%	0%	0%	0%	0%
15:00-18:00	0%	0%	0%	0%	0%	0%	0%	0%
18:00-21:00	0%	0%	0%	0%	0%	0%	0%	0%
21:00-24:00	0%	47%	0%	0%	0%	0%	0%	47%
ByDay	0%	47%	53%	0%	0%	0%	0%	100%

- Baker2. There were [REDACTED] during the week from Mon 8/17 to Sun 8/23. The typical average is less than 1 per week.
 - Four of the events occurred in the Beaverdam neighborhood.
 - See G:\APD\Compstat\Bulletin1338\SikeInfo\ "01" files..



RepDate	OffenseCode	casenum1	address1	happened	Beat	Closed	Open	Grand Total	
Tue 08/18/15	BurgResidence	15021264	15 BEAVER CREEK LN	Occurred Between Mon 8/17 7:00PM and Tue 5:53PM Span of 22hours 53minutes	Baker2		1	1	
		15021233	MOUNTAIN RDG	Occurred On Tue 8/18 12:22PM	Baker2		1	1	
Wed 08/19/15	Burg1stDegree	15021293	19 SYCAMORE ST	Occurred On Wed 8/19 4:18AM	Baker2		1	1	
Thu 08/20/15	BurgResidence	15021435	4 LYNWOOD RD	Occurred Between Thu 8/20 10:00AM and Thu 10:30AM Span of 30minutes	Baker2		1	1	
	Burg1stDegree	15021405	19 SYCAMORE ST	Occurred On Thu 8/20 4:39AM	Baker2	1		1	
Grand Total							1	4	5

Ben Fulmer

From: eeads@ashevillenc.gov
Sent: Thursday, August 20, 2015 4:25 PM
To: RFerguson@ashevillenc.gov
Cc: HSilberman@ashevillenc.gov
Subject: FW: Compstat Bulletin 1295
Attachments: BaseLayers.kmz; Weeks_1294_1295.kmz; DailyMap.kmz; PublicHousing.kmz; Other_1294_1295_1296Partial.kmz; Wrecks.kmz; TwoPlusWeeks_Charlie.kmz; TwoPlusWeeks_Adam.kmz; TwoPlusWeeks_Baker.kmz; Overview.pdf; A_List1.pdf; A_List2.pdf; B_List1.pdf; B_List2.pdf; C_List1.pdf; C_List2.pdf; County_List1.pdf; County_List2.pdf; PH_List1.pdf; PH_List2.pdf

From: Ed Eads
Sent: Tuesday, October 28, 2014 3:15 PM
To: Police West District Supervisors; Police North/East District Supervisors; Police South/Central District Supervisors
Cc: Wade Wood; Captain Stony Gonce; Captain Chris Reece-Young; Sean Davis; Travis Jones; Sgt. Brien Griffin; Todd Brigman; Sgt. Evan Coward; Tyler Radford; Steven Hendricks; Sgt. Steve Riddle; Sgt. Jackie Stepp; Sgt. John Rikard; Boyd McCaskill; Sgt. Joe Johnson; William Anderson; Criminal Investigation Supervisors; Sgt. Chuck Sams; Sgt. Dave Romick; Keith McCulloch; Sgt. Scott Pruet; Forensics; Sgt. Mike McClanahan; Sgt. Mack Creson; Joshua Meindl; Lisa Taube; Police Lieutenants
Subject: Compstat Bulletin 1295

Three new maps are provided, each specific to an individual district:

- TwoPlusWeeks_Adam
- TwoPlusWeeks_Baker
- TwoPlusWeeks_Charlie

Each map shows only the activity for that district, and only that district's beat outlines. It will match the information on the district list files. For example, the TwoPlusWeeks_Adam map file will match the information in A_List1.pdf and A_List2.pdf. The maps and lists have information for two full weeks, plus activity so far in this current week -- from Monday onward.

Spike Activity. Week 1295 is 10/20-10/26/14:

- Citywide
 - With *only* 52 Burglary (average is 77.1) for month of October so far
 - With *only* 45 Shoplifting (average is 106.9) for month of October so far
 - With 50 Simple Assaults (average is 32.2) during two weeks from 10/13 to 10/26
 - 1. 7 of these on Tue 10/21
 - With 2 Robbery (average is 0.4) on Sun 10/26

- With 8 Larceny (average is 3.6) on Thu 10/23
- **Public Housing**
 - Bartlett Arms with 2 Violent Crimes (average is 0.1) during week from 10/20 to 10/26
 1. Mon 10/20 and Tue 10/21
 - Deaverview with 3 Violent Crimes (average is 0.7) during the month of October so far
 1. Fri 10/3, Tue 10/14, Mon 10/27
 - Erskine with 2 Violent Crimes (average is 0.4) during the month of October so far
 1. Sun 10/5, Sun 10/19
 - Lee Walker with 2 Violent Crimes (average is 0.5) during the month of October so far
 1. Wed 10/1, Fri 10/10
- **Downtown**
 - With 2 Robberies (average is 0.7) during week from 10/20 to 10/26
 1. Both occurred Sun 10/26
 - With 9 Simple Assaults (average is 4.7) during two weeks from 10/13 to 10/26
 - With *only* 6 CarB&E so far in October. October 2013 saw 15, October 2012 saw 12.
- **Adam14**
 - With 7 Stolen Vehicles (average is 2.5) during two weeks from 10/13 to 10/26
 1. 2 of these occurred on Wed 10/15, and 3 occurred on Wed 10/22. A prior Wednesday, 10/1, also had one hit.
 - Over the last 6 weeks Vandalism is at “near” spike levels (average is 5.0 for two weeks):
 1. 9 during two weeks from 9/15 to 9/28
 2. 9 during two weeks from 9/29 to 10/12
 3. 7 during two weeks from 10/13 to 10/26
 - With 14 Simple Assaults (average is 5.6) during two weeks from 10/13 to 10/26
 1. 9 of these occurred during week from 10/20 to 10/26
 1. 2 on Sun 10/19, 2 on Mon 10/20, 2 on Tue 10/21, 3 on Fri 10/24
- **Adam23**
 - With no spike activity
- **Baker12**
 - With 11 CarB&E (average is 3.2) during two weeks from 10/13 to 10/26
 1. Also note a similar spike of 11 during two weeks from 8/4 to 8/17
- **Baker34**
 - With 4 CarB&E (average is 0.5) on Thu 10/23
- **Charlie12**
 - With 3 Robberies (average is 1.3) during week from 10/20 to 10/26
 1. 2 of these occurred Sun 10/26

- With 18 Simple Assaults (average is 9.5) during two weeks from 10/13 to 10/26
- Charlie3
 - With no spike activity
- Charlie45
 - With 3 Larceny (average is 0.7) on Thu 10/23
 - With 5 Vandalism (average is 2.3) during two weeks from 10/13 to 10/26
 1. 3 of these occurred during week from 10/20 to 10/26

Ed Eads
Crime Analyst
Asheville Police Department
NC 828 259-5883
eeads@ashevillenc.gov



Think Green! Please do not print this e-mail unless necessary

Confidentiality Notice: This email message, including any attachments, is for the sole use of the intended recipient(s) and may contain confidential and privileged information. Any unauthorized use, disclosure, or distribution is prohibited.