



Citizen Police Advisory Committee

- Crime Review -

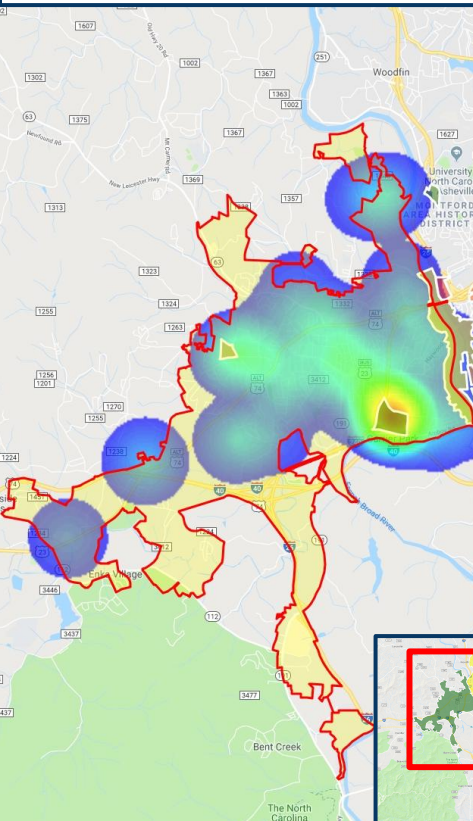
March 2019



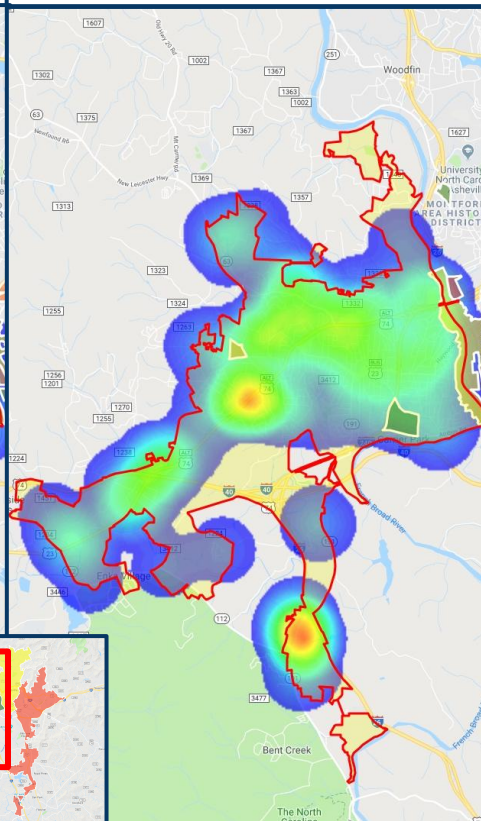
West Asheville



Violent Crime



Property Crime



Crime Class

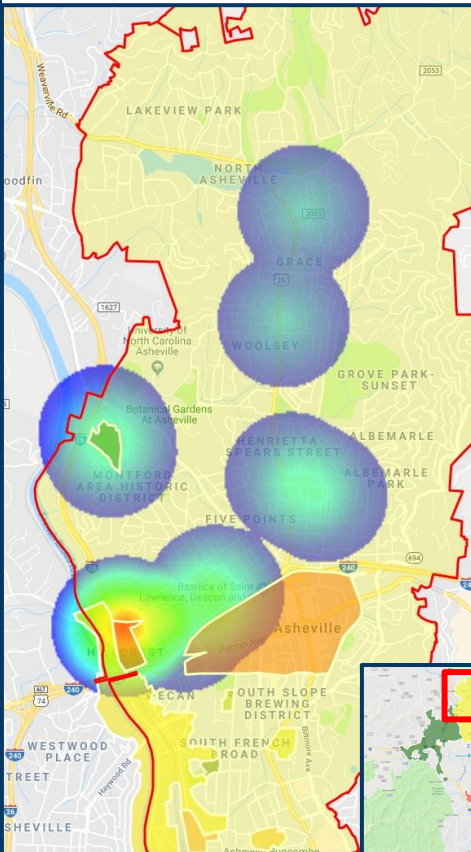
	Mar 2018	Feb 2019	Mar 2019	Change from Last Month	Perc. Change from Last Month
Homicide				0	0%
Sexual Assault	1		1	1	100%
Sexual Offense - Other	3	1	1	0	0%
Robbery - Commercial		2		-2	-100%
Robbery - Individual	4	3	4	1	33%
Aggravated Assault	9	9	5	-4	-44%
Assault - Other	26	16	37	21	131%
Burglary - Commercial	3	12	6	-6	-50%
Burglary - Residential	12	8	12	4	50%
Theft	24	41	22	-19	-46%
Fraud	17	24	35	11	46%
Shoplifting	20	36	31	-5	-14%
Motor Vehicle Theft	12	10	24	14	140%
Burglary from Motor Vehicle	7	24	32	8	33%
Arson	1	1		-1	-100%
Grand Total	139	187	210	23	12%



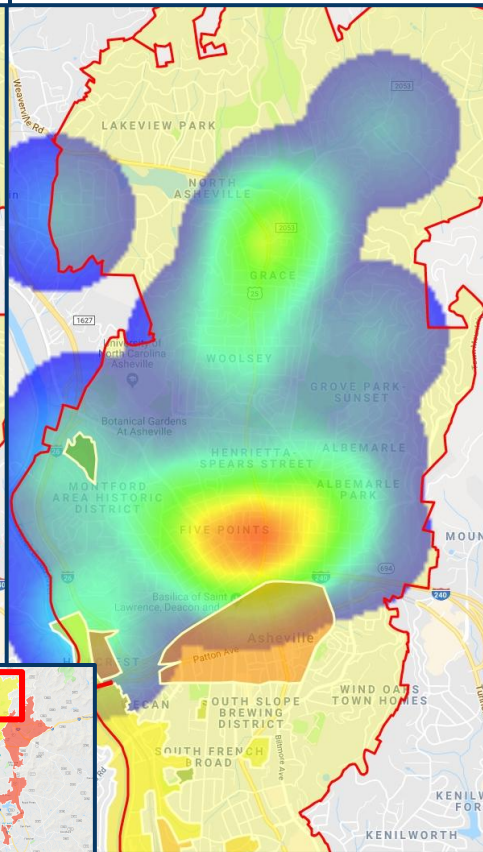
North Asheville



Violent Crime



Property Crime



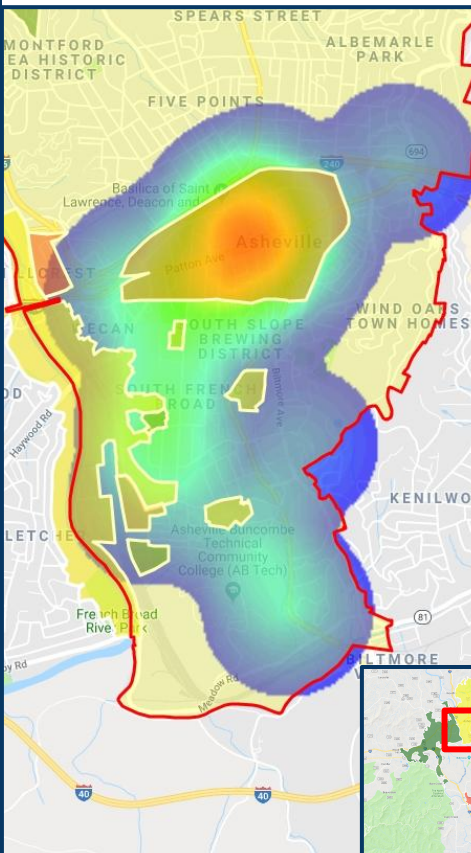
Crime Class	Mar 2018	Feb 2019	Mar 2019	Change from Last Month	Perc. Change from Last Month
Homicide				0	0%
Sexual Assault				0	0%
Sexual Offense - Other	3	2	1	-1	-50%
Robbery - Commercial				0	0%
Robbery - Individual			1	1	100%
Aggravated Assault	6	3	2	-1	-33%
Assault - Other	18	10	10	0	0%
Burglary - Commercial	2	1	3	2	200%
Burglary - Residential	3	3	5	2	67%
Theft	10	9	8	-1	-11%
Fraud	12	5	6	1	20%
Shoplifting	3		3	3	300%
Motor Vehicle Theft	2	1	4	3	300%
Burglary from Motor Vehicle	6	8	7	-1	-13%
Arson				0	0%
Grand Total	65	42	50	8	19%



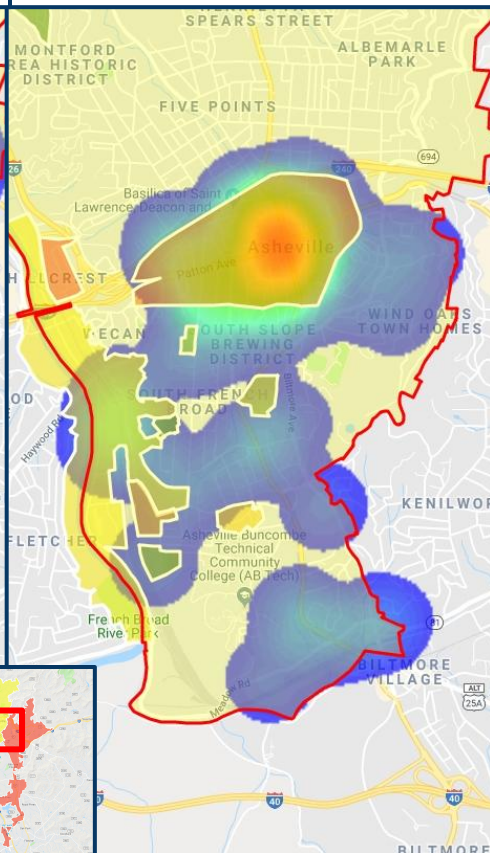
Central Asheville



Violent Crime



Property Crime

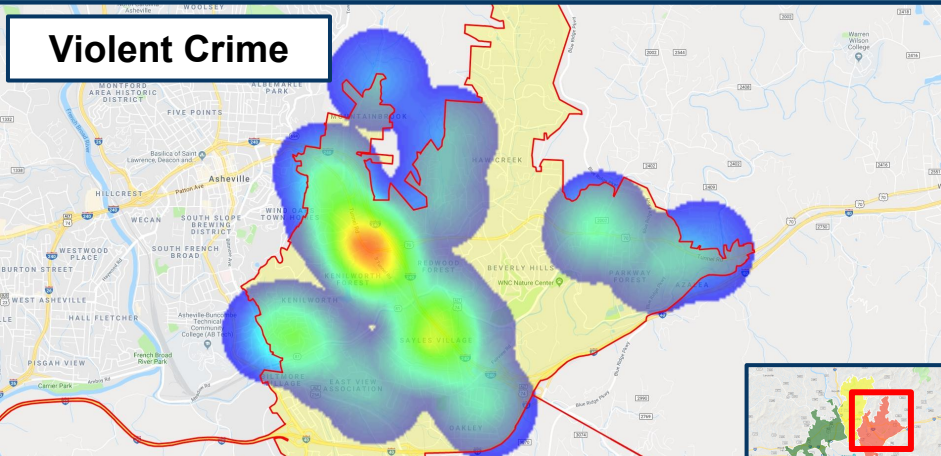


Crime Class	Mar 2018	Feb 2019	Mar 2019	Change from Last Month	Perc. Change from Last Month
Homicide	1			0	0%
Sexual Assault		1	3	2	200%
Sexual Offense - Other	2	3	2	-1	-33%
Robbery - Commercial				0	0%
Robbery - Individual	2		2	2	200%
Aggravated Assault	9	6	6	0	0%
Assault - Other	26	32	18	-14	-44%
Burglary - Commercial	12	7	9	2	29%
Burglary - Residential	7	7	3	-4	-57%
Theft	36	30	27	-3	-10%
Fraud	8	14	8	-6	-43%
Shoplifting	19	10	5	-5	-50%
Motor Vehicle Theft	3	6	9	3	50%
Burglary from Motor Vehicle	9	8	13	5	63%
Arson		1		-1	-100%
Grand Total	134	125	105	-20	-16%

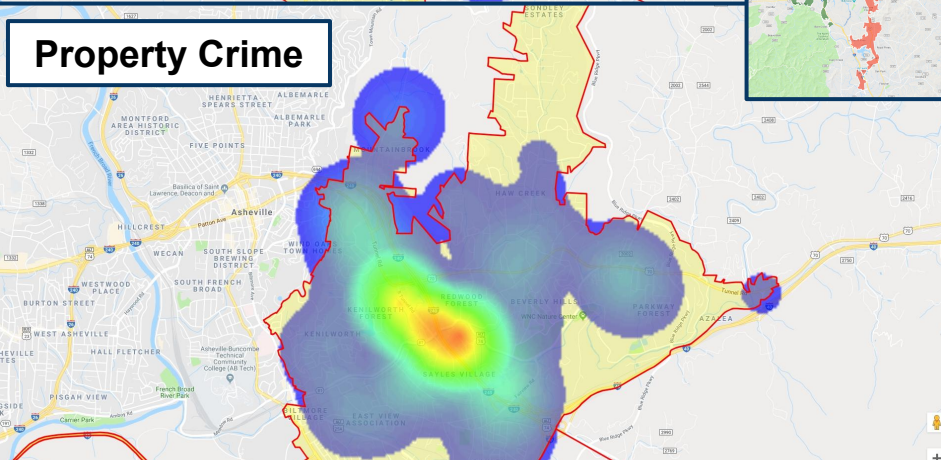


East Asheville

Violent Crime



Property Crime



Crime Class

Mar
2018

Feb
2019

Mar
2019

Change
from
Last
Month

Perc.
Change
from
Last
Month

Homicide

0

0%

Sexual Assault

1

0

0%

Sexual Offense - Other

3

1

2

1

100%

Robbery - Commercial

1

2

2

200%

Robbery - Individual

3

2

3

1

50%

Aggravated Assault

1

1

100%

Assault - Other

19

17

25

8

47%

Burglary - Commercial

5

11

3

-8

-73%

Burglary - Residential

4

1

8

7

700%

Theft

21

22

26

4

18%

Fraud

25

21

16

-5

-24%

Shoplifting

75

45

68

23

51%

Motor Vehicle Theft

5

8

8

0

0%

Burglary from Motor Vehicle

12

27

28

1

4%

Arson

0

0%

Grand Total

174

155

190

35

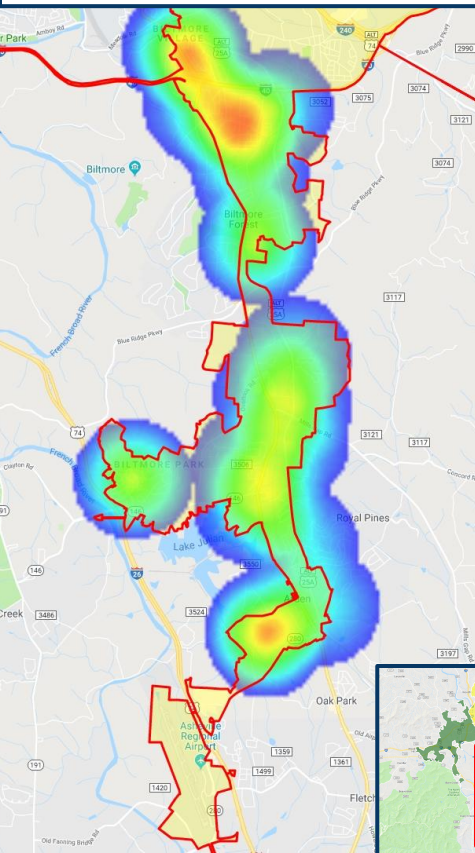
23%



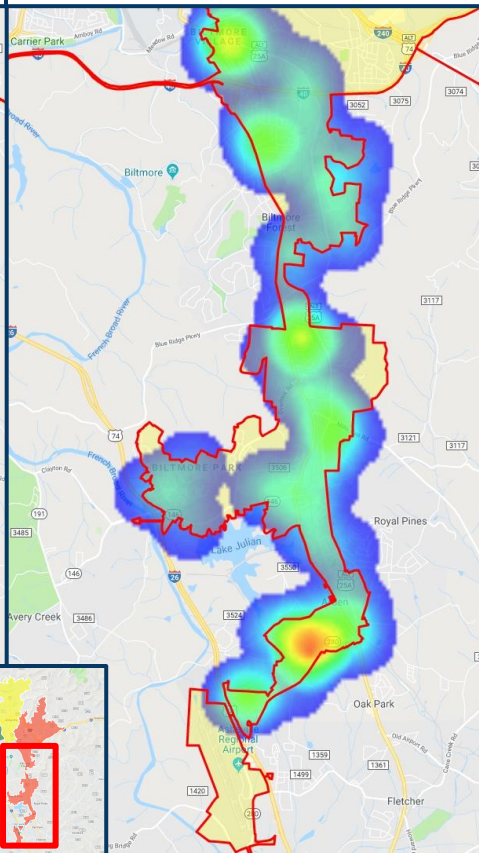
South Asheville



Violent Crime



Property Crime



Crime Class

	Mar 2018	Feb 2019	Mar 2019	Change from Last Month	Perc. Change from Last Month
Homicide				0	0%
Sexual Assault		1		-1	-100%
Sexual Offense - Other	2	2	2	0	0%
Robbery - Commercial	1		1	1	100%
Robbery - Individual	1	2	2	0	0%
Aggravated Assault	3			0	0%
Assault - Other	14	10	20	10	100%
Burglary - Commercial	4	6	5	-1	-17%
Burglary - Residential	6	2	4	2	100%
Theft	16	21	16	-5	-24%
Fraud	16	17	15	-2	-12%
Shoplifting	20	18	12	-6	-33%
Motor Vehicle Theft	6	6	5	-1	-17%
Burglary from Motor Vehicle	5	7	24	17	243%
Arson		1	1	0	0%
Grand Total	94	93	107	14	15%