

To: To Whom it May Concern

From: Gaston College Records Custodian

Date: April 27, 2021

Re: Records

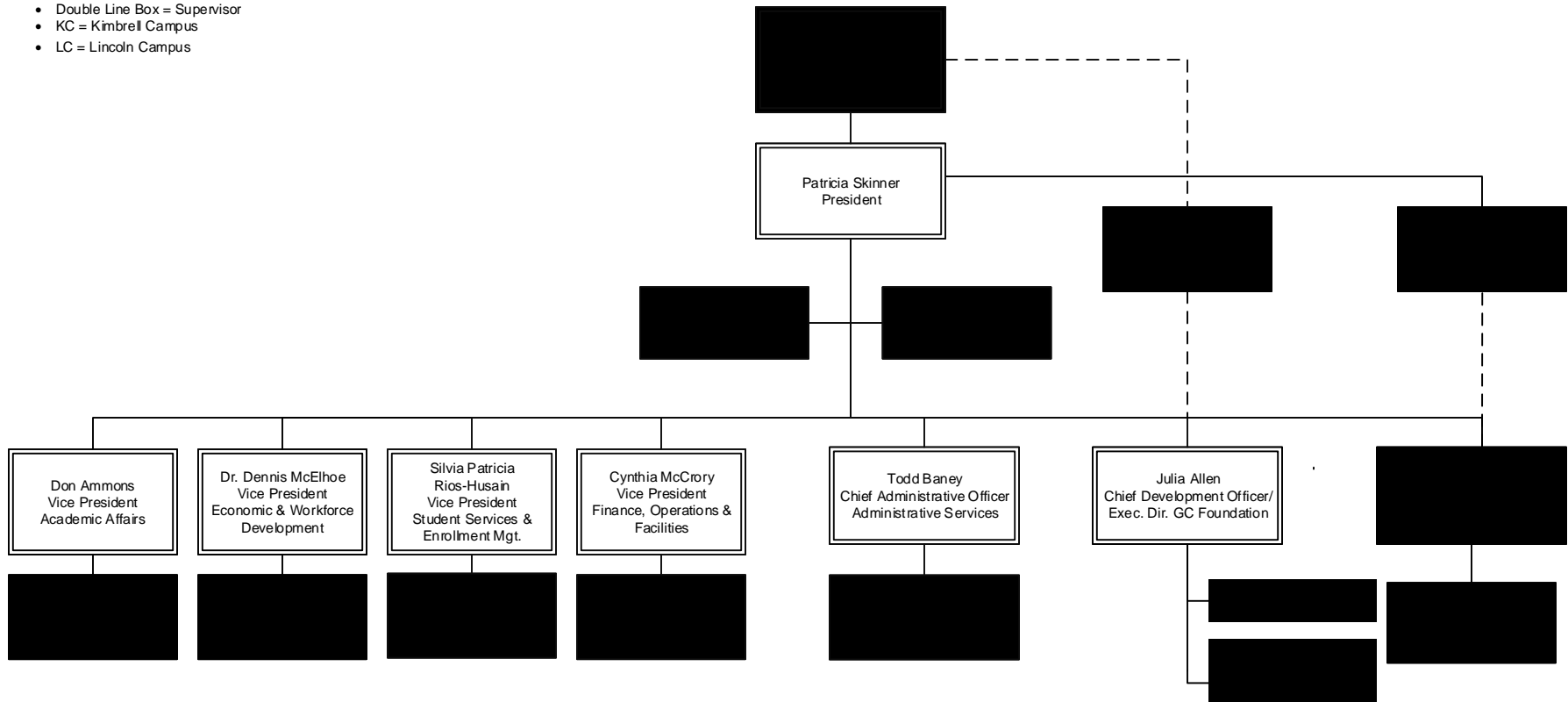
Regarding request number 1 and number 2, public records law provides for the release of name and position, but does not provide for the release of race and gender. The names and positions for the Gaston College Executive Council and Administrative positions from 01/01/2015 – present are shown on the attached and redacted organization charts.

Regarding request number 3, public records law does not require a government agency to create or compile a record that does not exist, and Gaston College does not maintain a specific record in relation to this information request. There is no College policy that requires a position be made available for posting; however, positions that are made available are posted for application. Additionally, the Trustees of Gaston College delegate to the President of the College the authority and responsibility to form the internal organization for the effective operation, management, and administration of the College, and further authorizes the President to make changes to the internal organization as deemed necessary for the good of the College. The Trustees of Gaston College also grant the President the authority to reassign or reclassify any employee and/or position.

Administrative Organization Chart

Key:

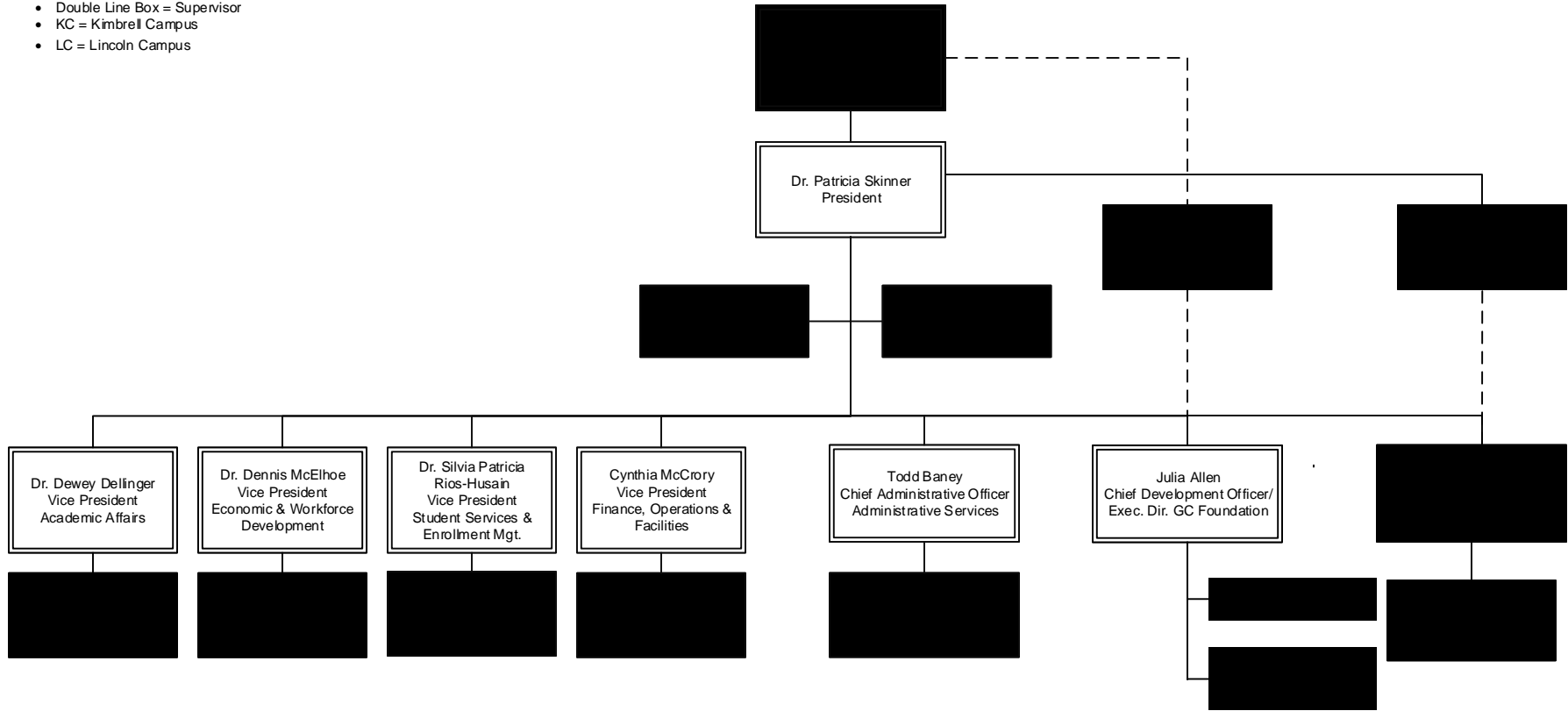
- Double Line Box = Supervisor
- KC = Kimbrell Campus
- LC = Lincoln Campus



Administrative Organization Chart

Key:

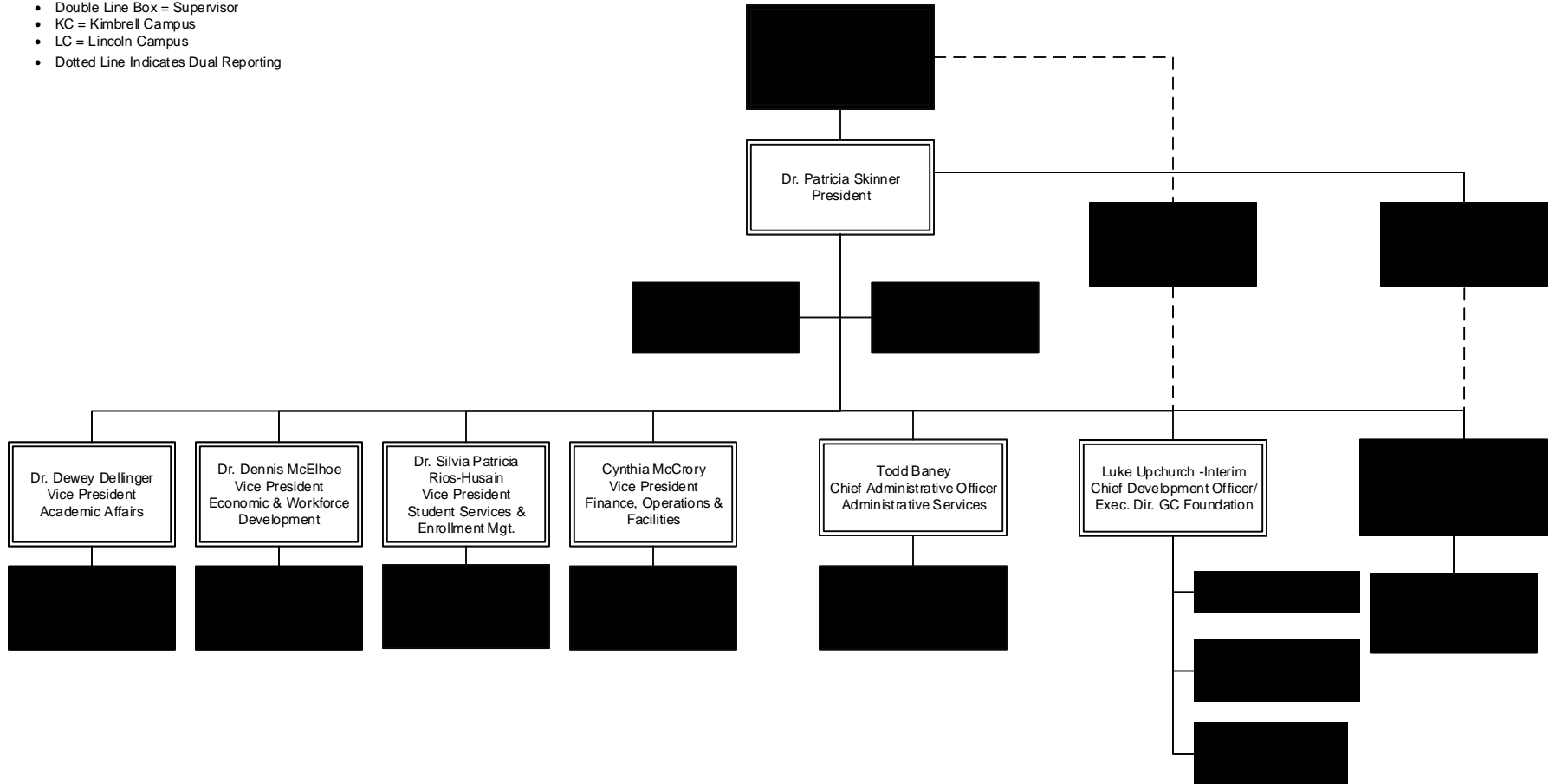
- Double Line Box = Supervisor
- KC = Kimbrell Campus
- LC = Lincoln Campus



Administrative Organization Chart

Key:

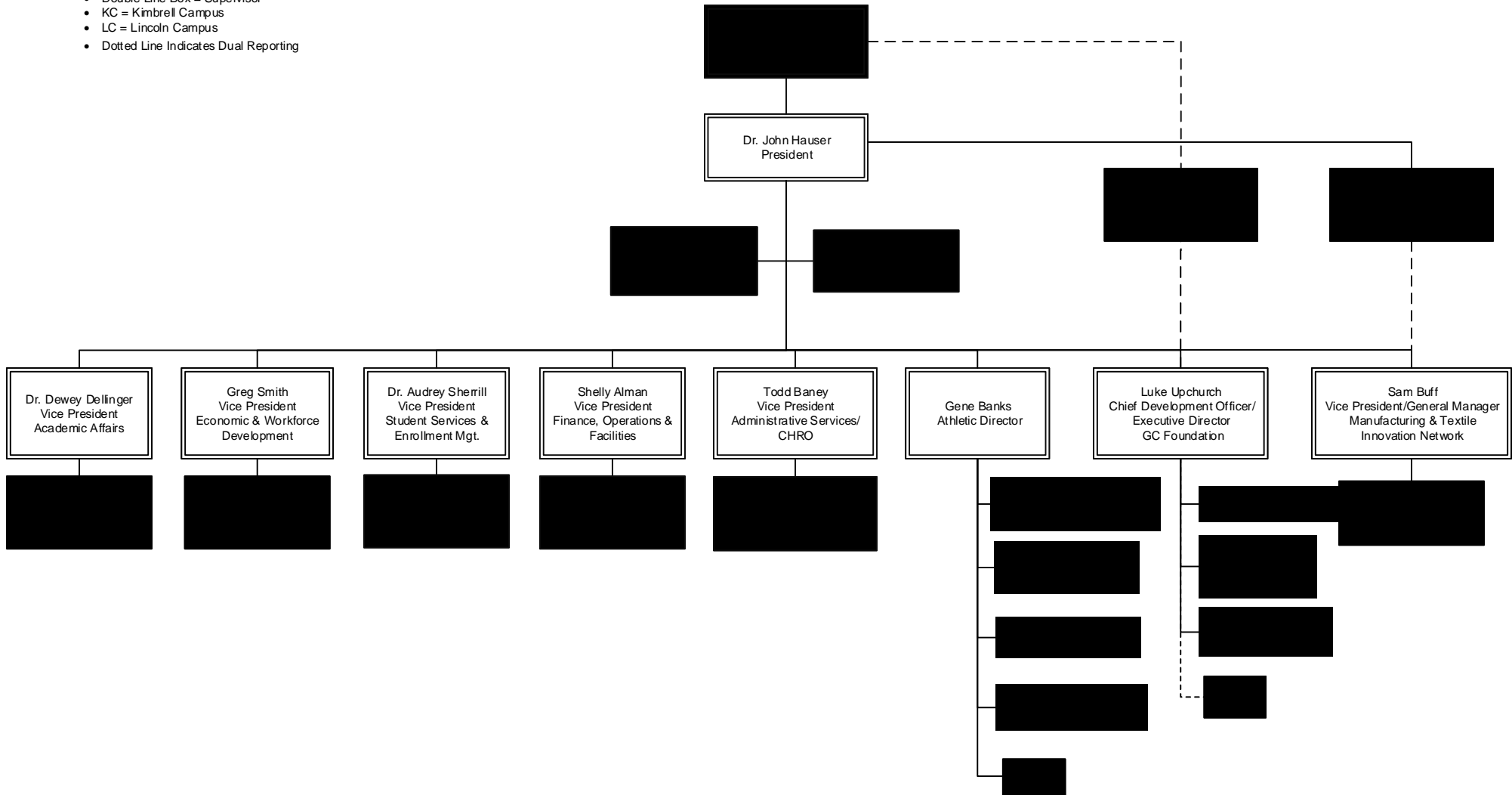
- Double Line Box = Supervisor
- KC = Kimbrell Campus
- LC = Lincoln Campus
- Dotted Line Indicates Dual Reporting



Administrative Organization Chart

Key:

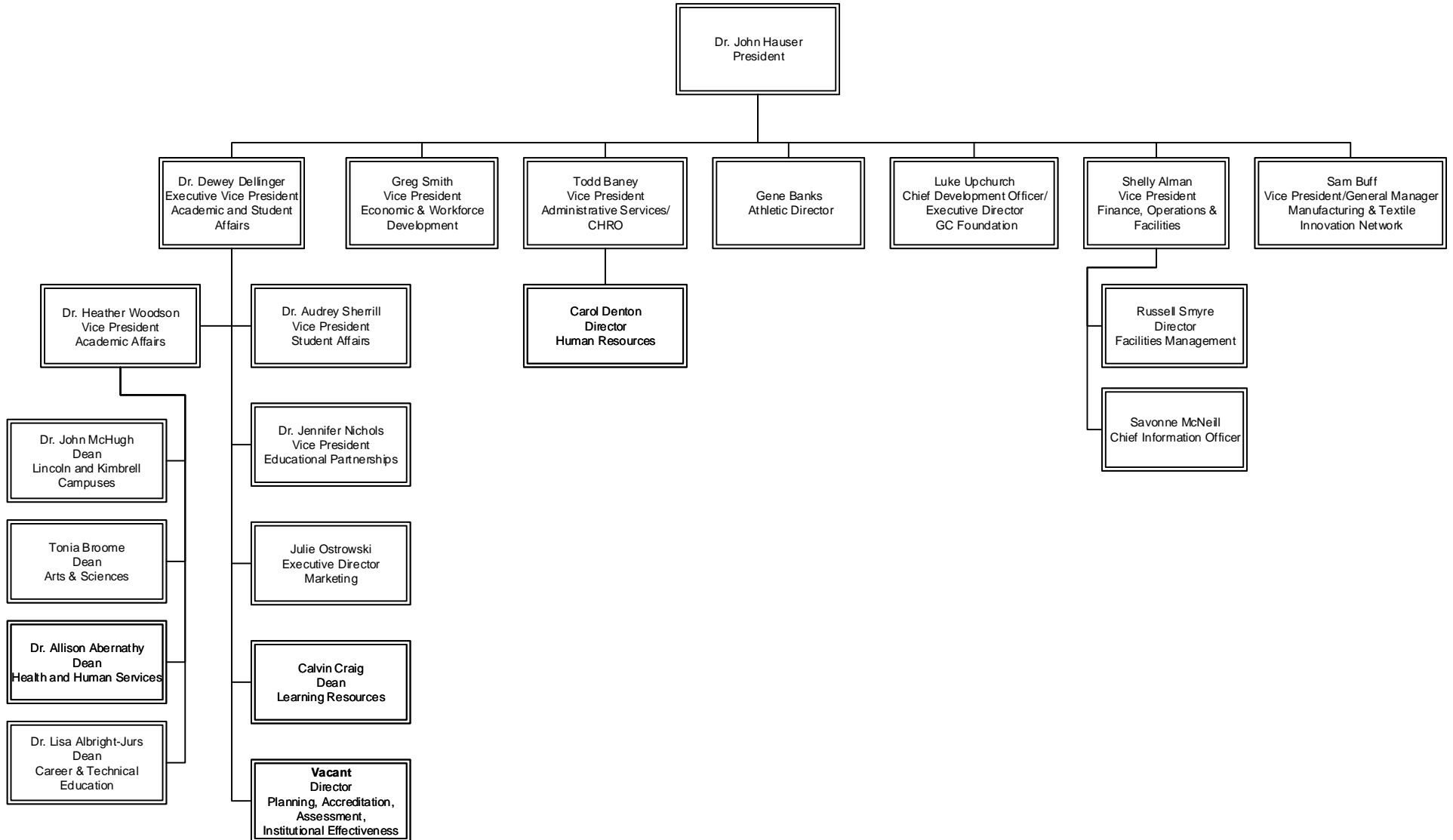
- Double Line Box = Supervisor
- KC = Kimbrell Campus
- LC = Lincoln Campus
- Dotted Line Indicates Dual Reporting



Organization Chart Executive Council

Key:

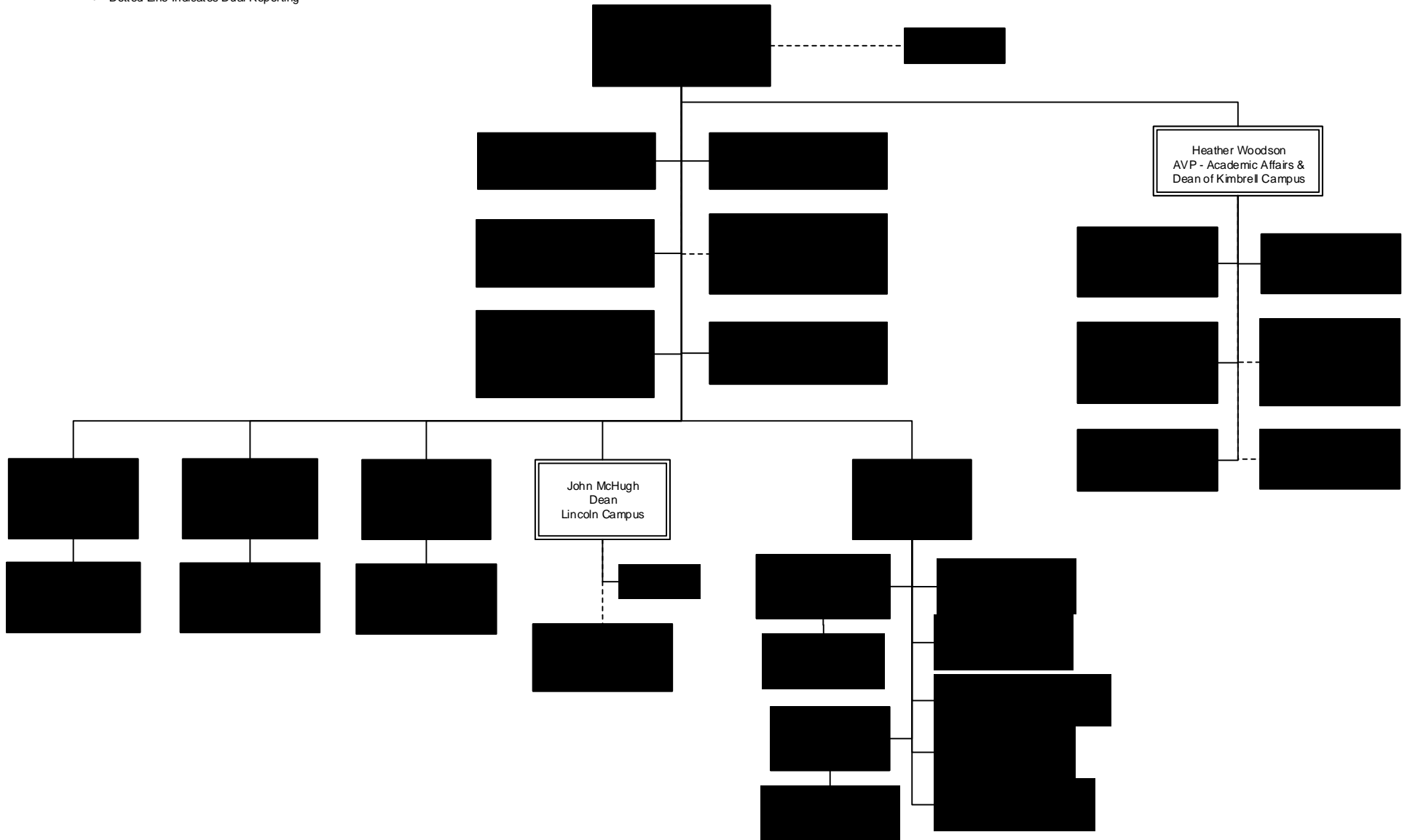
- Double Line Box = Supervisor/Chair
- KC = Kimbrell Campus
- LC = Lincoln Campus
- Dotted Line Indicates Dual Reporting



Academic Affairs Organization Chart

Key:

- Double Line Box = Supervisor
- KC = Kimbrell Campus
- LC = Lincoln Campus
- Dotted Line Indicates Dual Reporting



Student Affairs and Enrollment Management Organization Chart

- Key:**
- Double Line Box = Supervisor
 - KC = Kimbrell Campus
 - LC = Lincoln Campus
 - Dotted Line Indicates Dual Reporting

