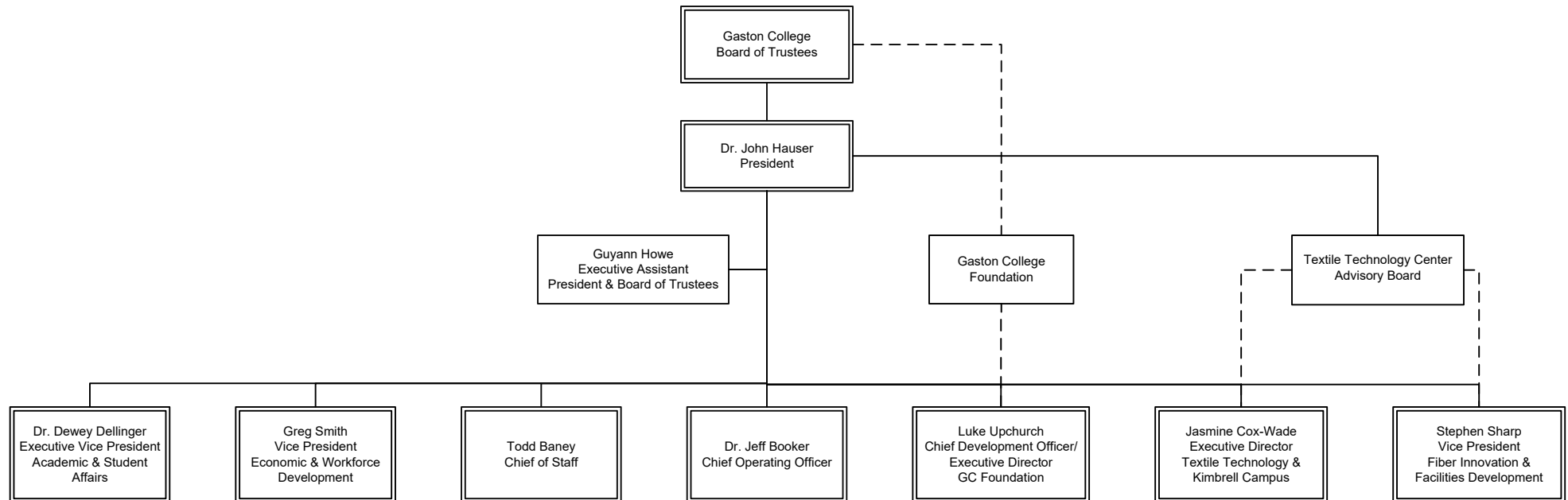
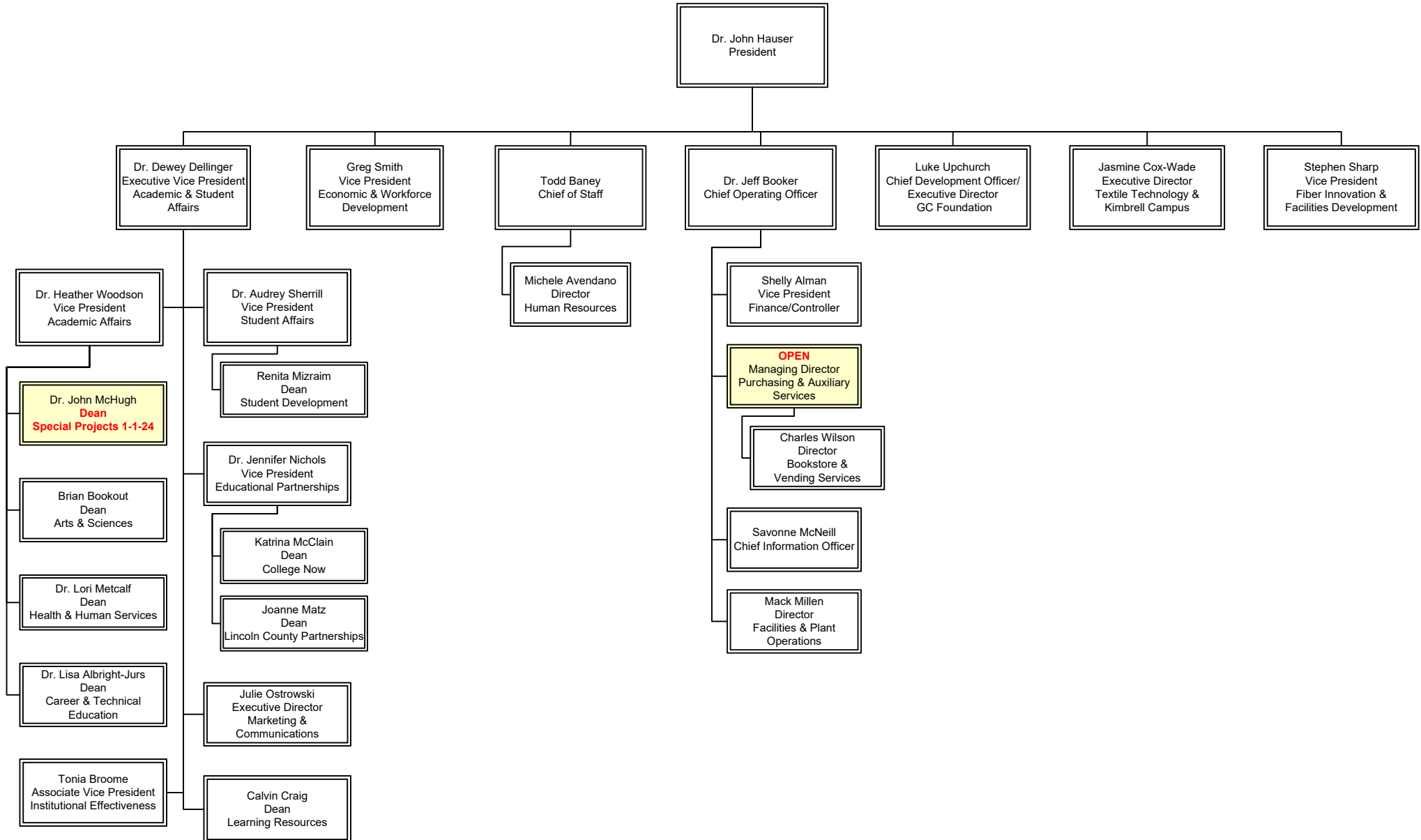


Organization Chart President's Cabinet



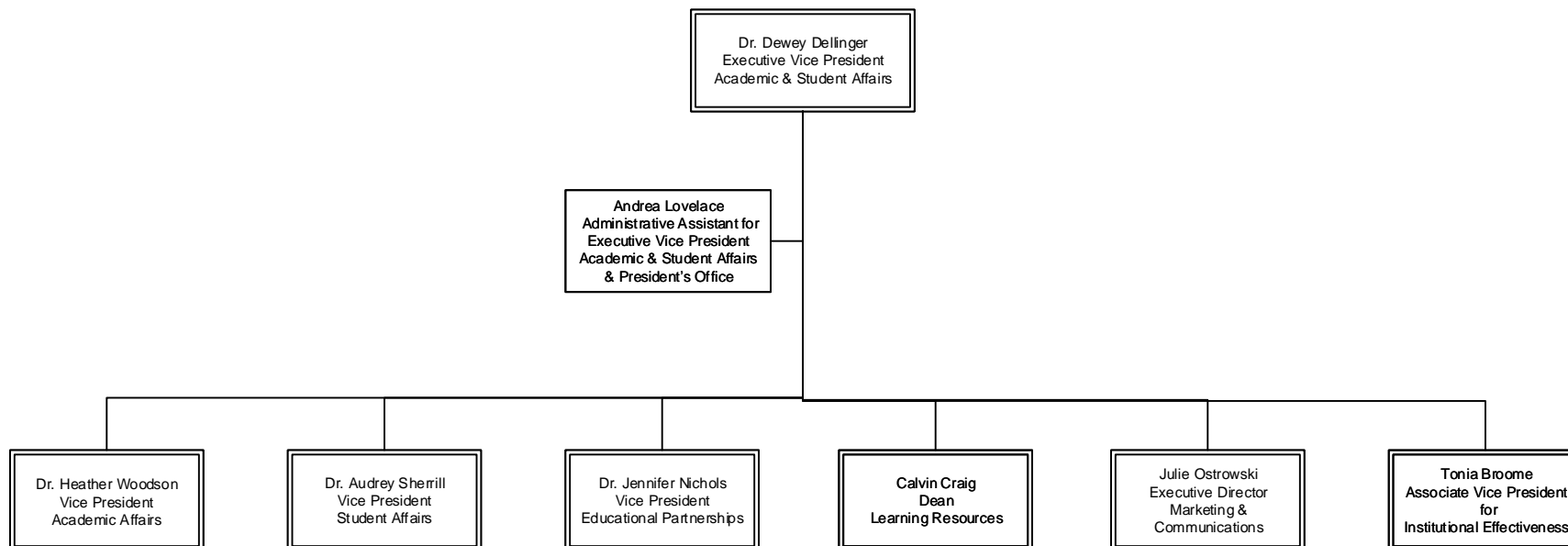
Organization Chart Executive Council

Updated: 11-1-2023
Supersedes: 10-1-2023



Organization Chart Academic & Student Affairs

Updated: 11-1-2023
New: 8-1-2022





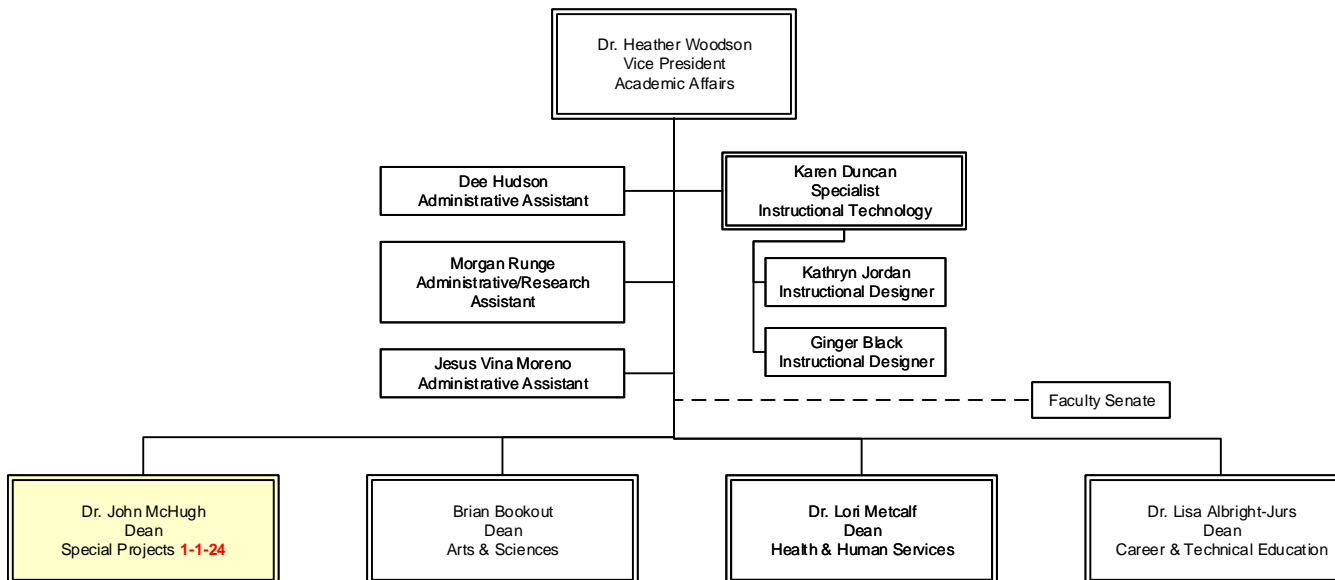
Organization Chart Lincoln Campus

Updated: 11-17-2023
New: 5-1-2023

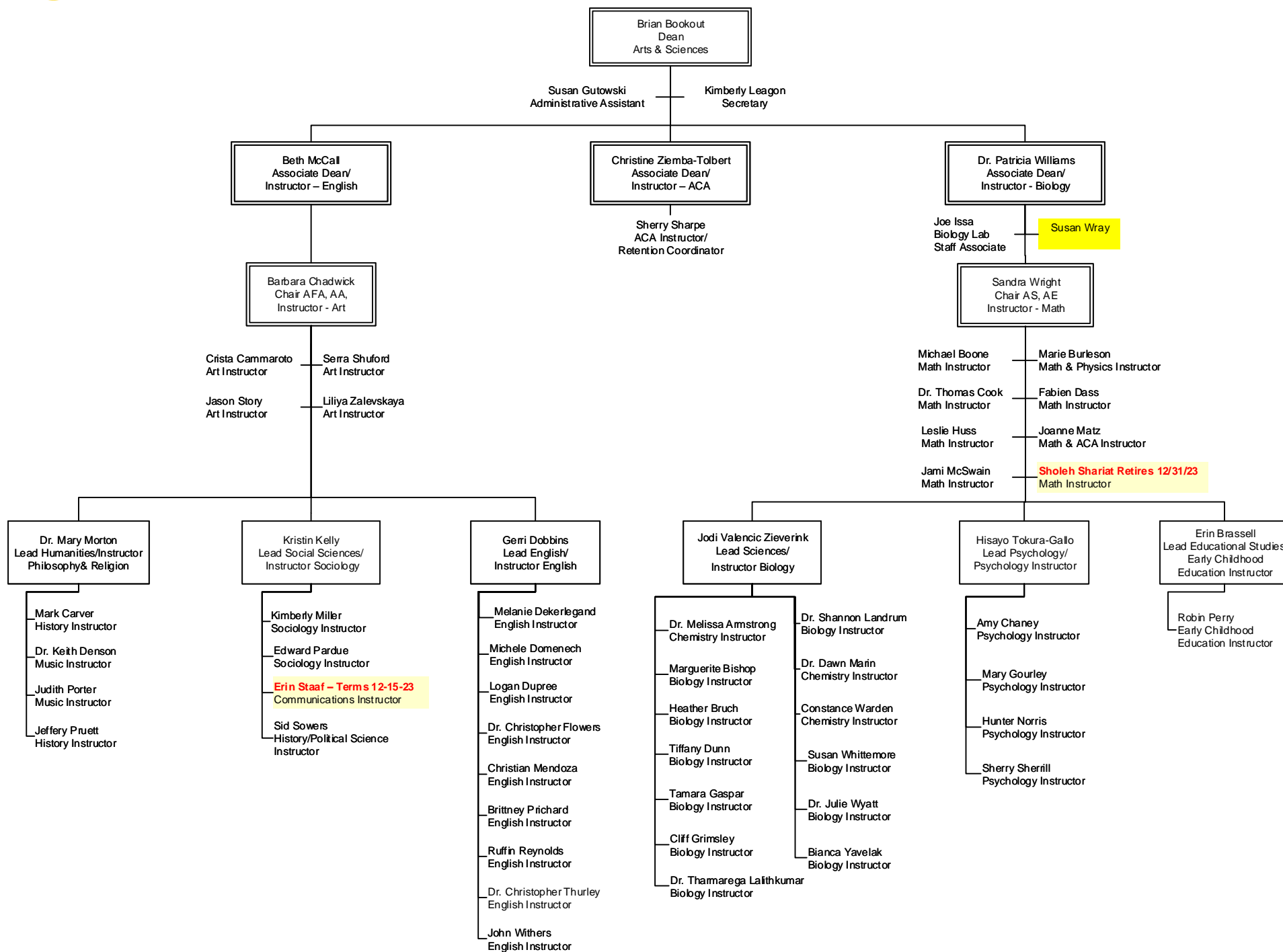
Dr. John McHugh
Dean
Lincoln Campus
Change Jan 2024

Organization Chart Academic Affairs

Updated: 11-17-2023
Supersedes: 11-1-2023

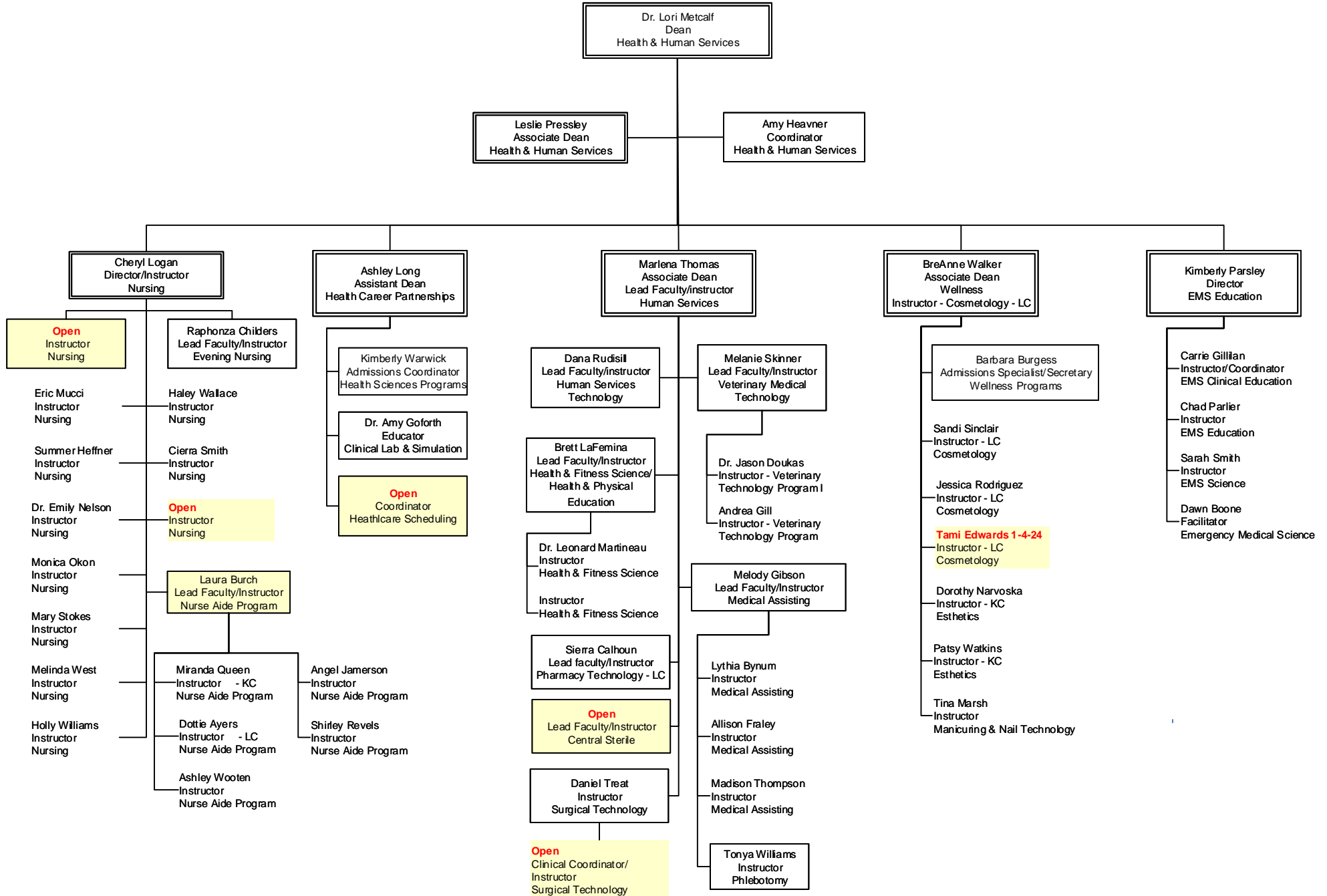


Organization Chart Arts & Sciences

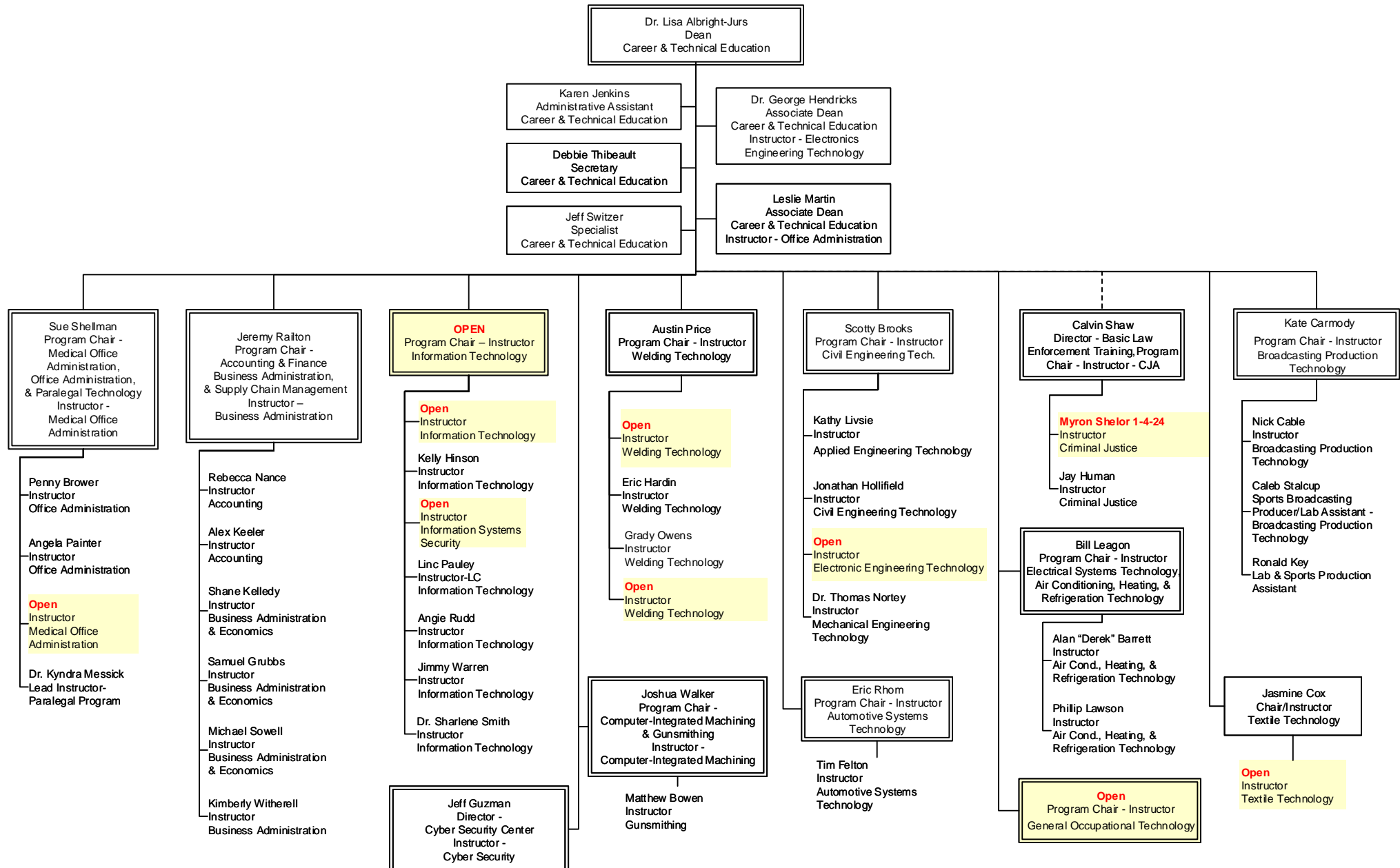


Organization Chart Health & Human Services

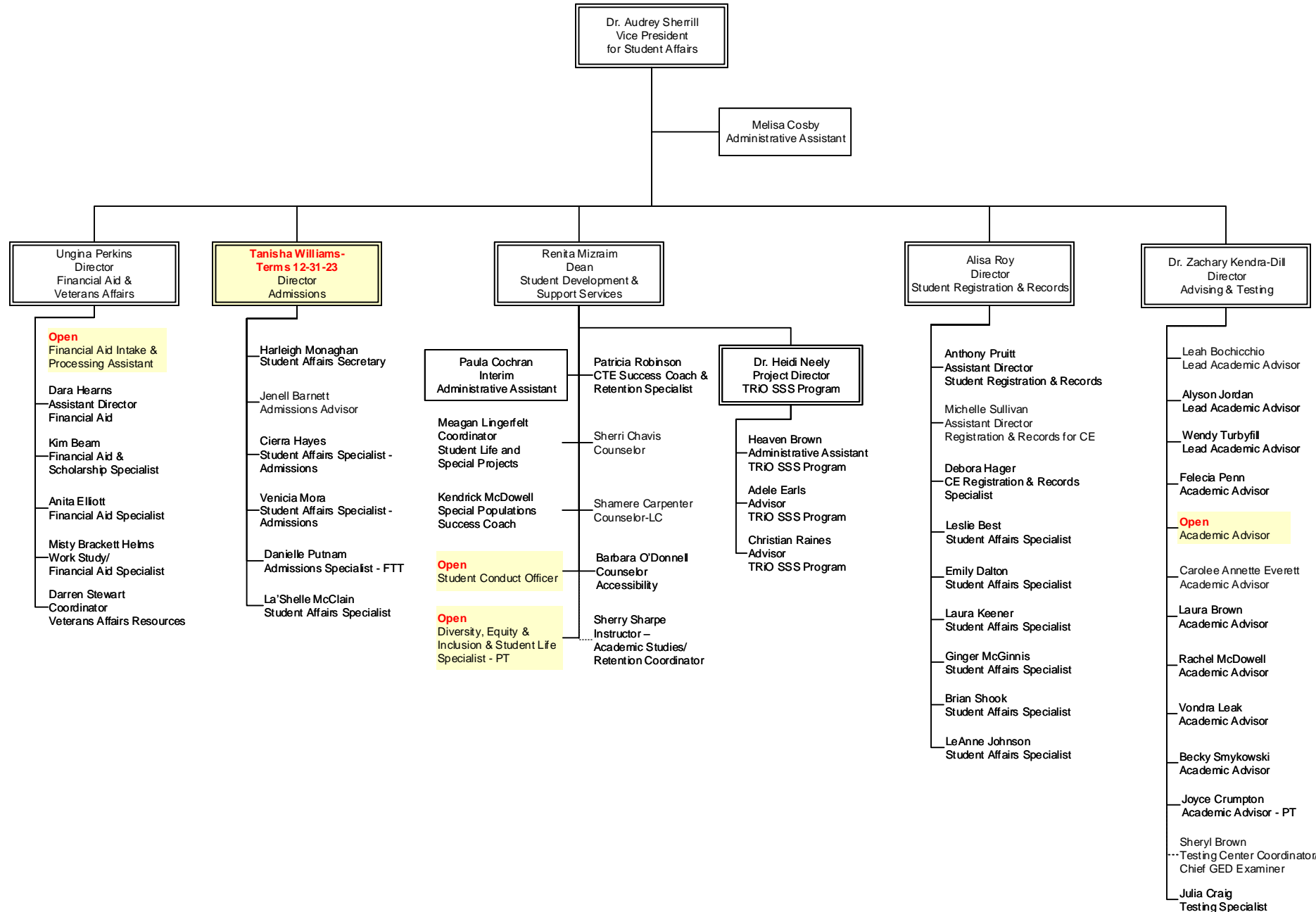
Updated: 11-17-2023
Supersedes: 11-1-2023



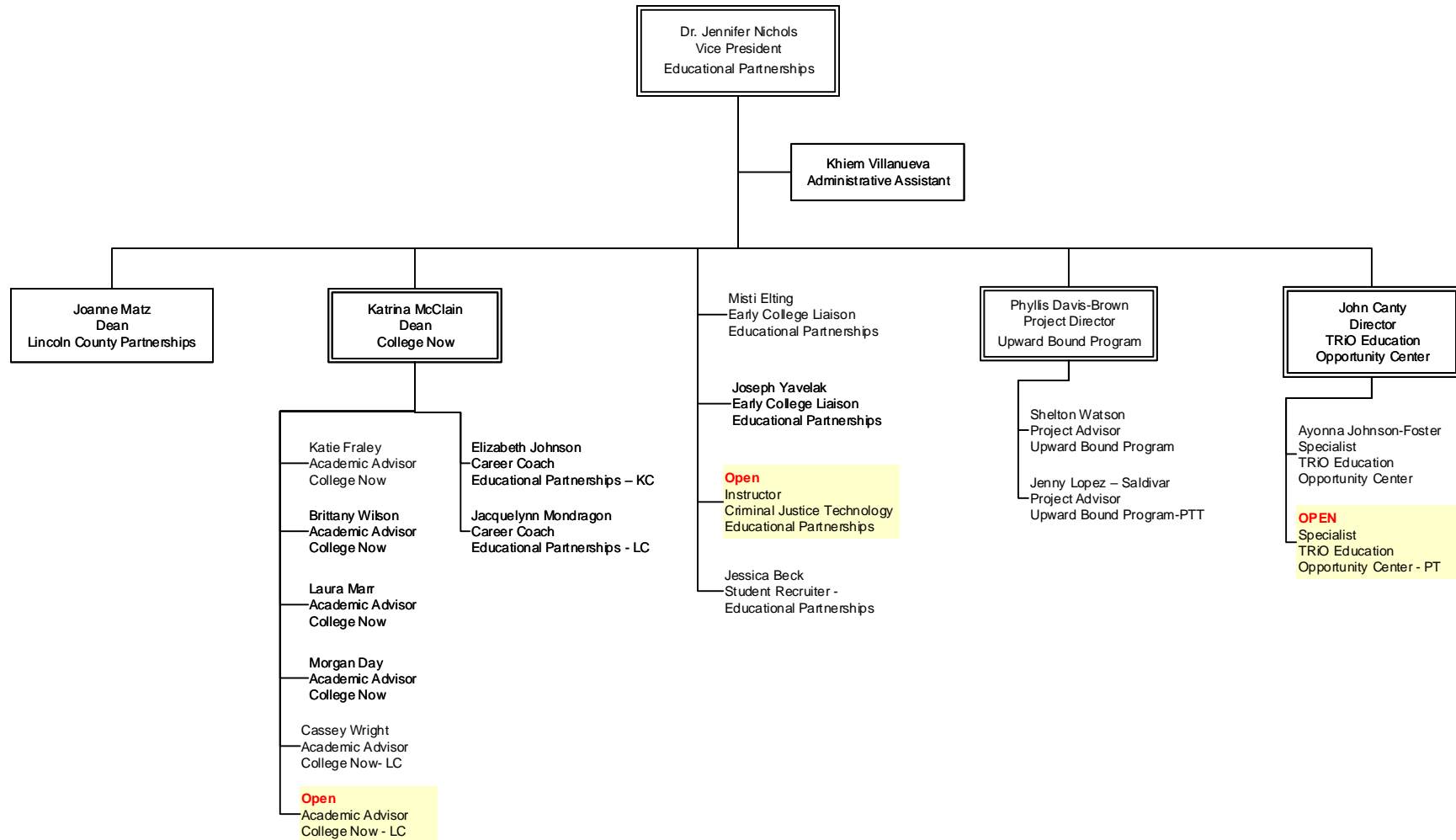
Organization Chart Career & Technical Education



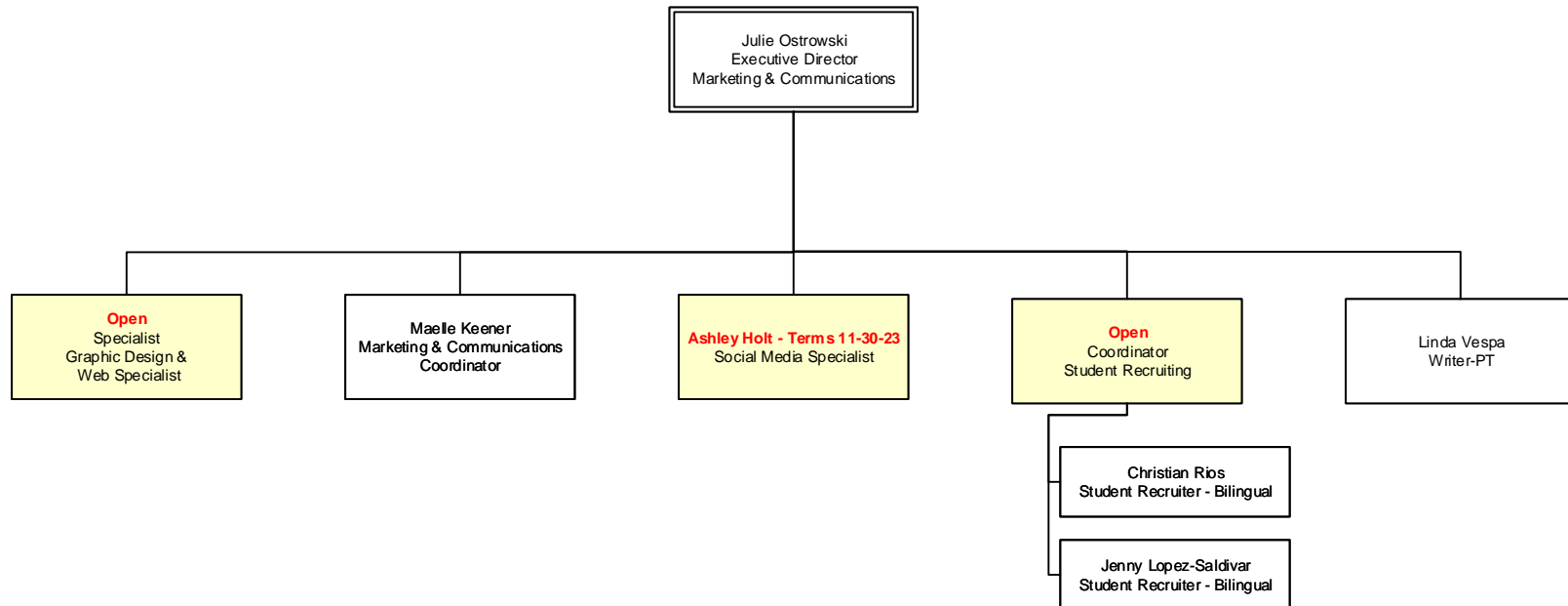
Organization Chart Student Affairs



Organization Chart Educational Partnerships

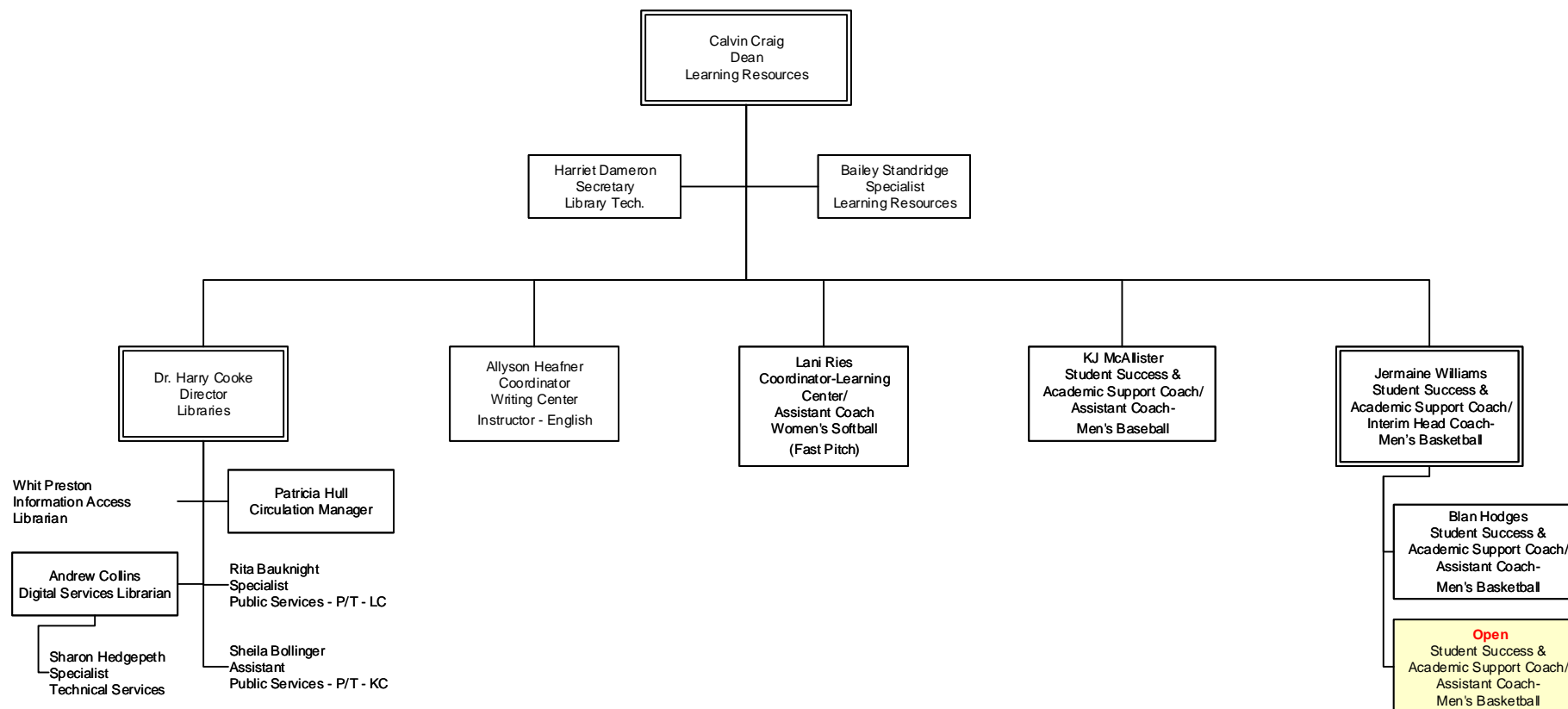


Organization Chart Marketing & Communications

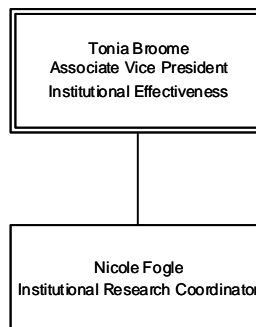


Organization Chart Learning Resources

Updated: 9-1-2023
New: 8-1-2022



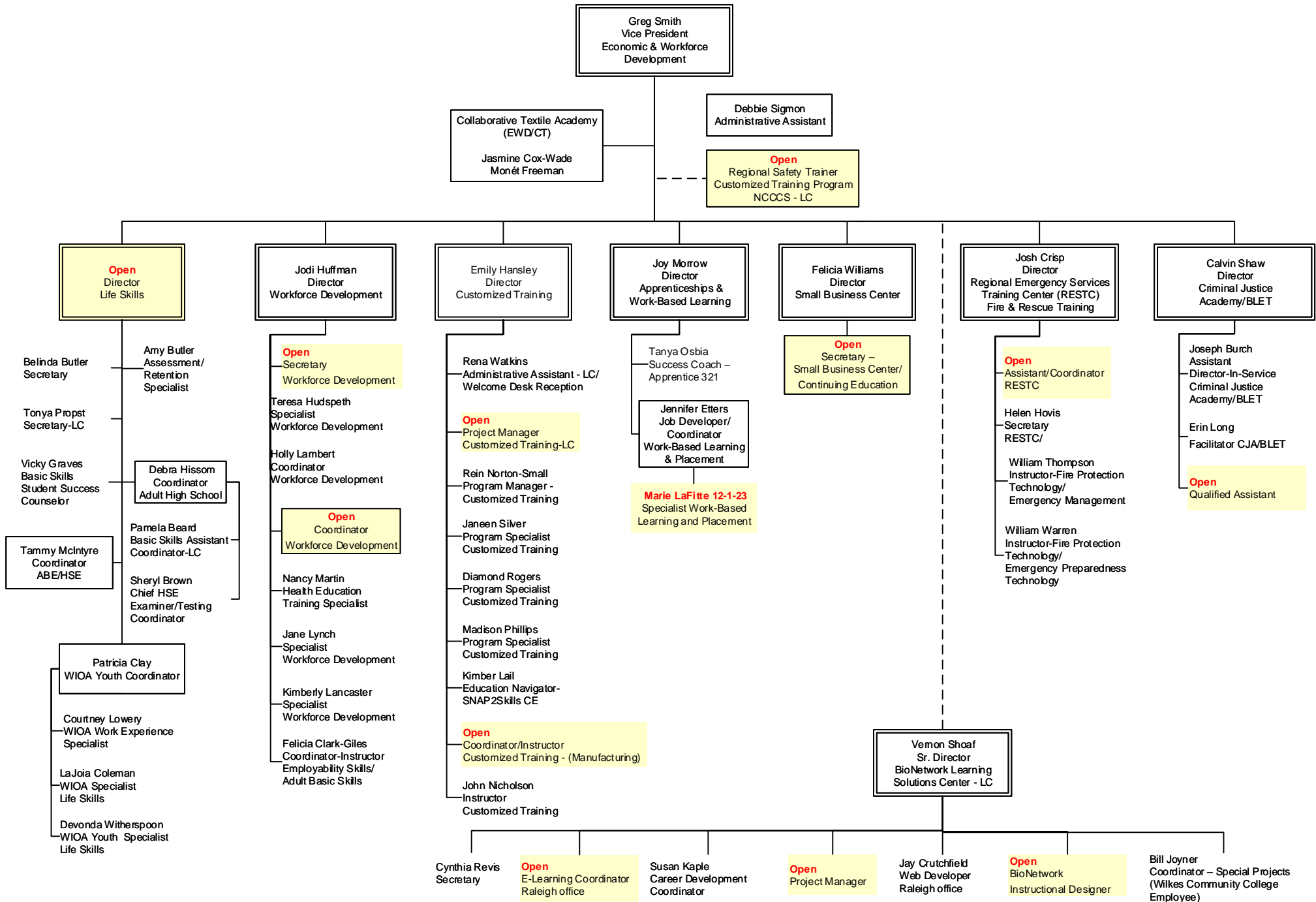
Organization Chart Institutional Effectiveness



Organization Chart

Economic & Workforce Development

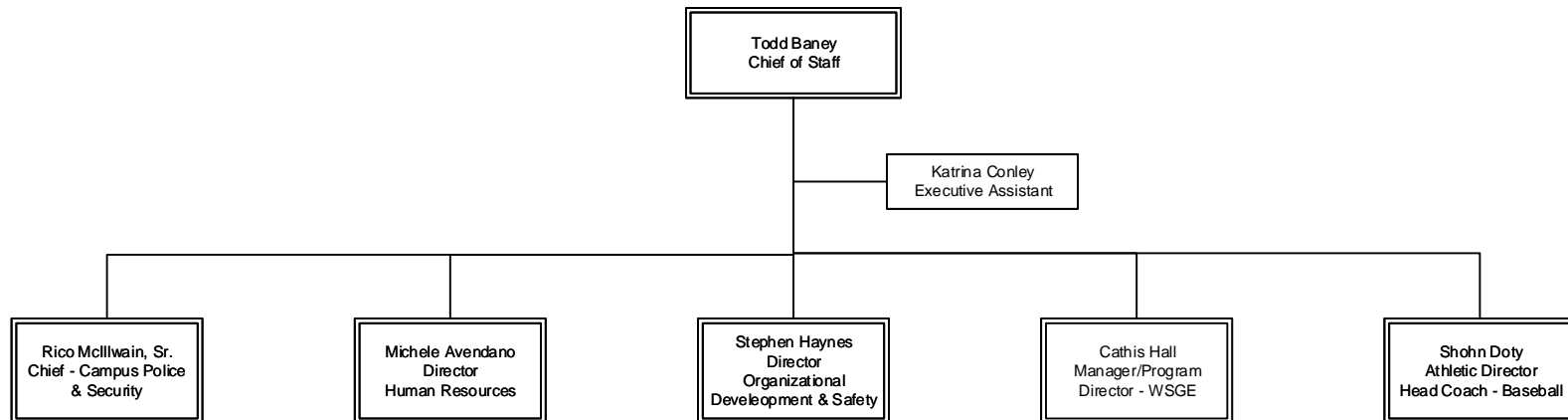
Updated: 11-17-2023
Supersedes: 8-1-2023



Organization Chart

Administrative Services

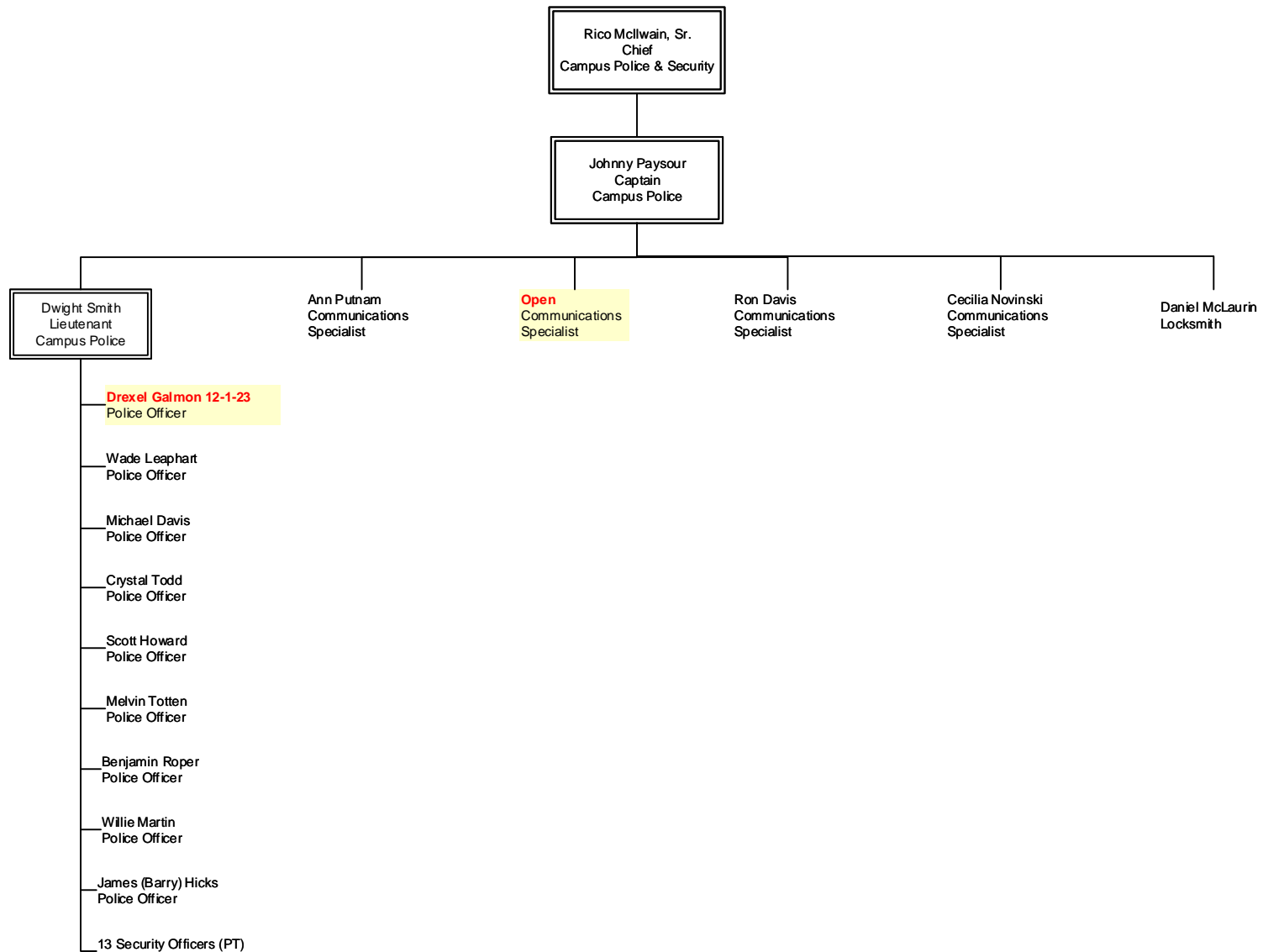
Updated: 10-1-2023
Supersedes: 7-1-2023



Organization Chart

Campus Police & Security

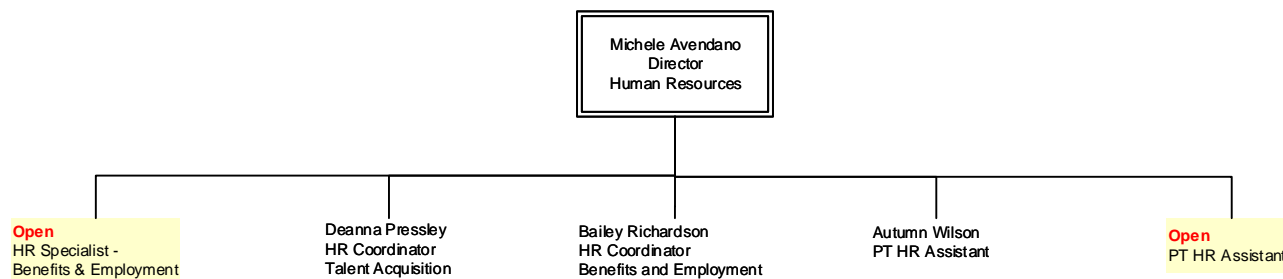
Updated: 11-17-2023
Supersedes: 10-1-2023



Organization Chart

Human Resources

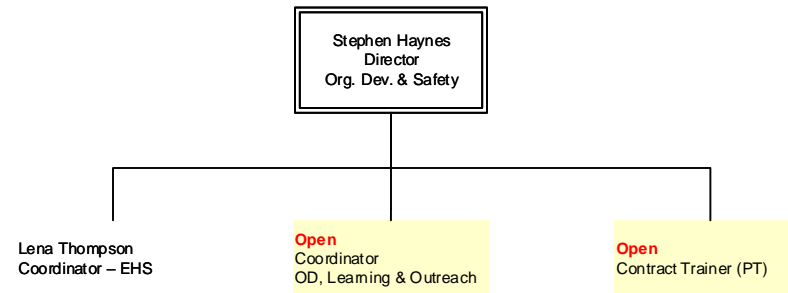
Updated: 11-17-2023
Supersedes: 9-1-2023



Organization Chart

Organizational Development & Safety

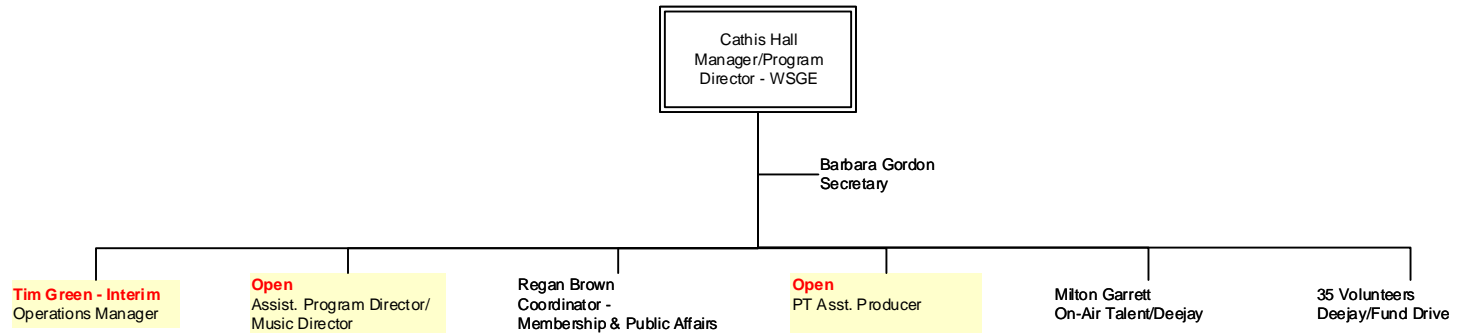
Updated: 7-1-2023
Supersedes: 6-5-2023



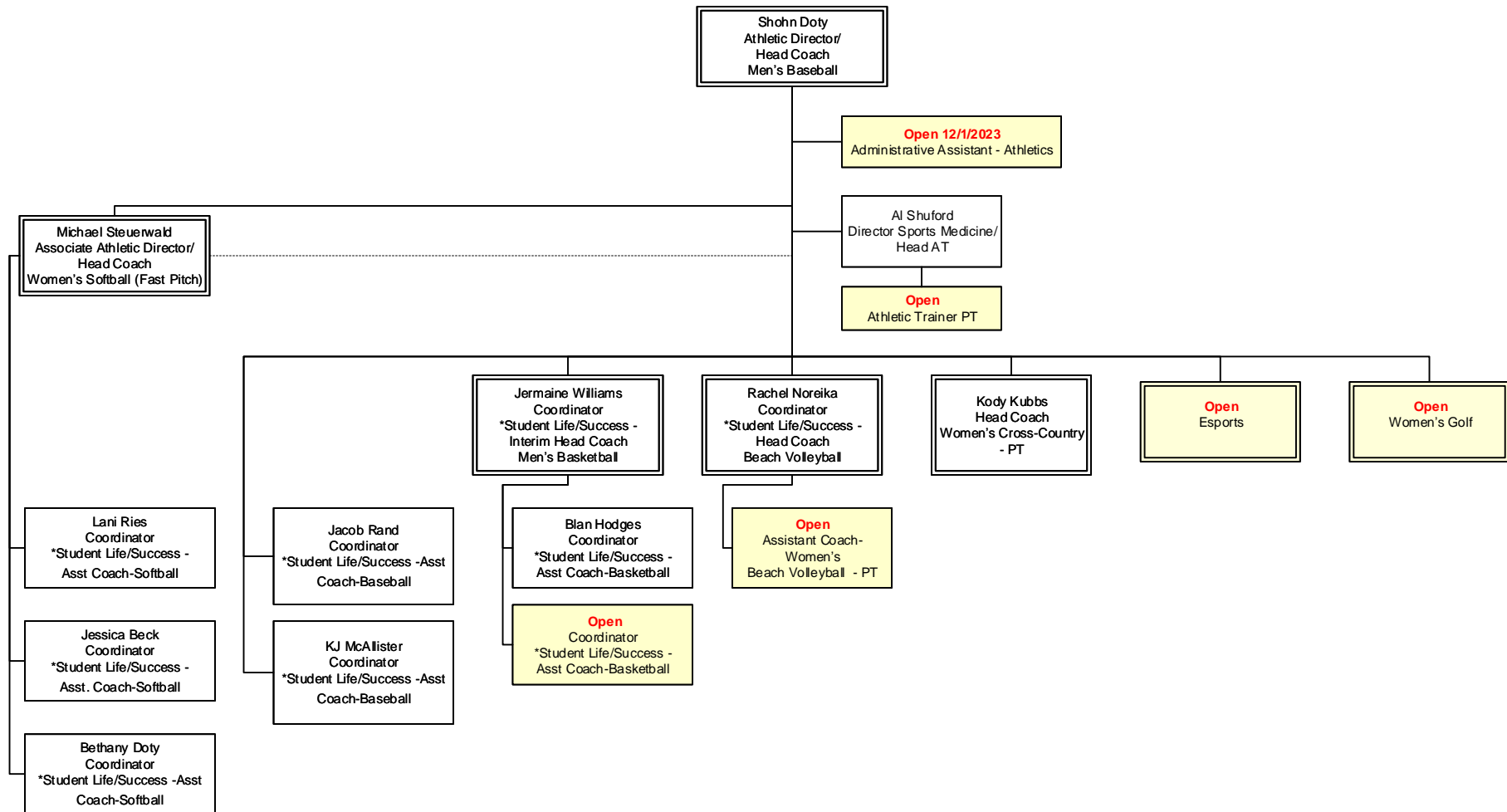
Organization Chart

WSGE 97.1 fm

Updated: 10-1-2023
Supersedes: 7-1-2023



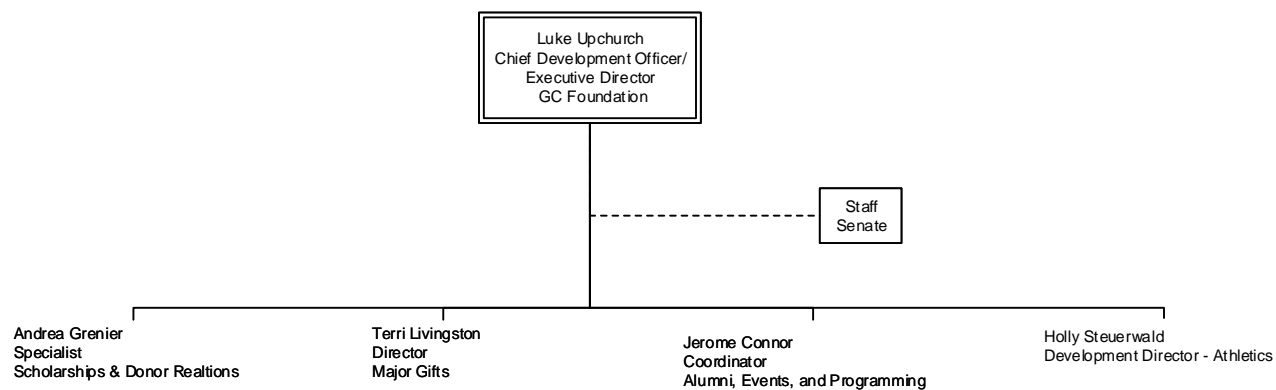
Organization Chart Athletics



*(Full Title): Coordinator – Student life, Success, Learning & Outreach

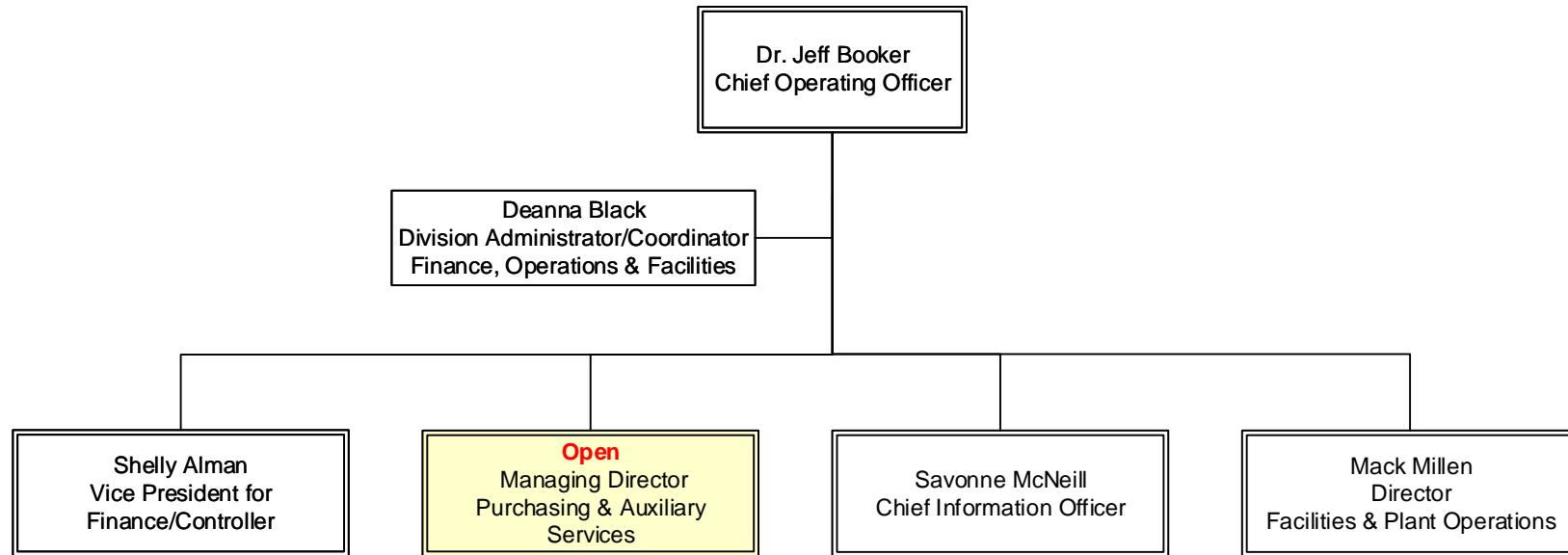
Head coaches dual report to the Athletic Director and the Associate Athletic Director.

Organization Chart Foundation & Development Office

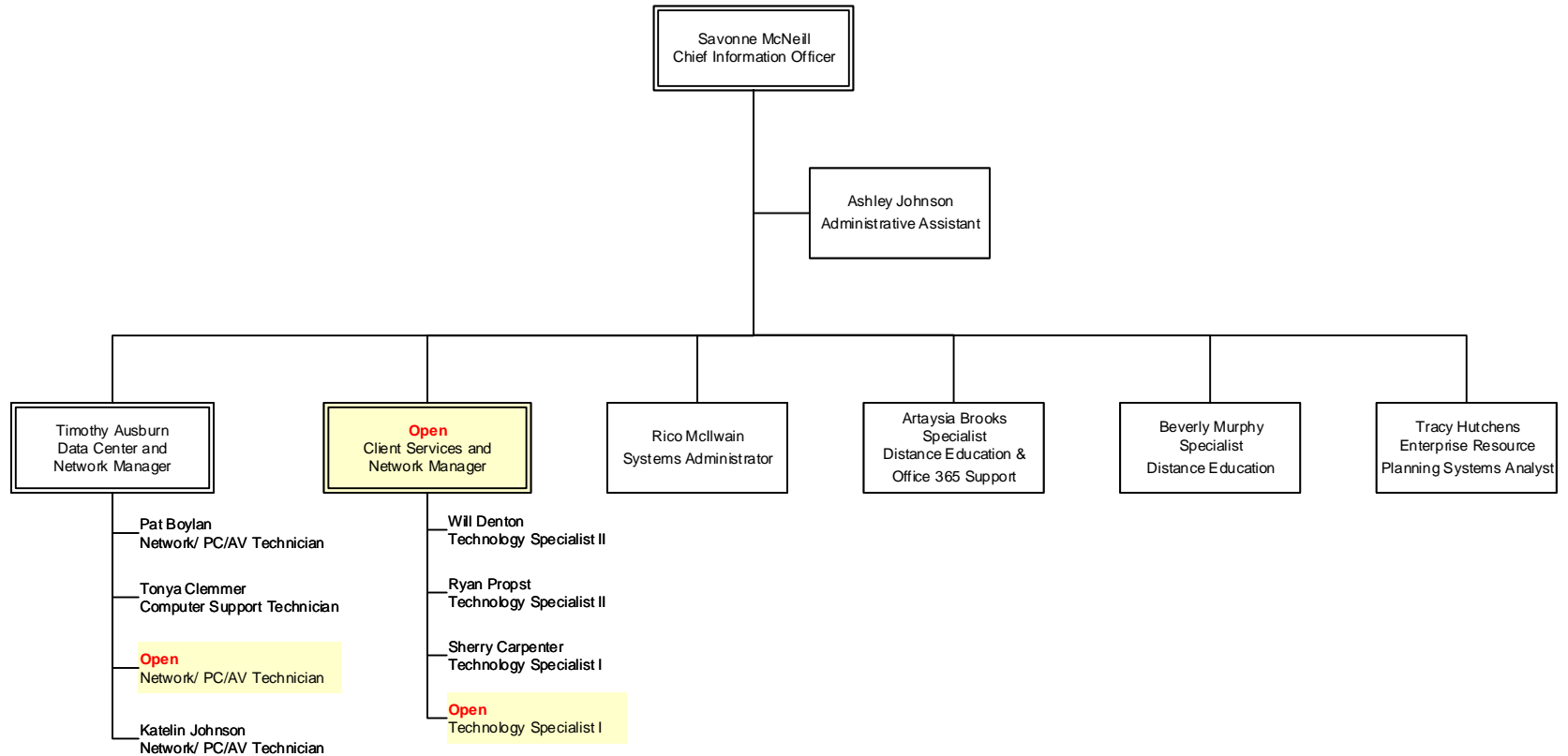


Organization Chart Finance, Operations & Facilities

Effective: 11-17-2023
Supersedes: 10-1-2023

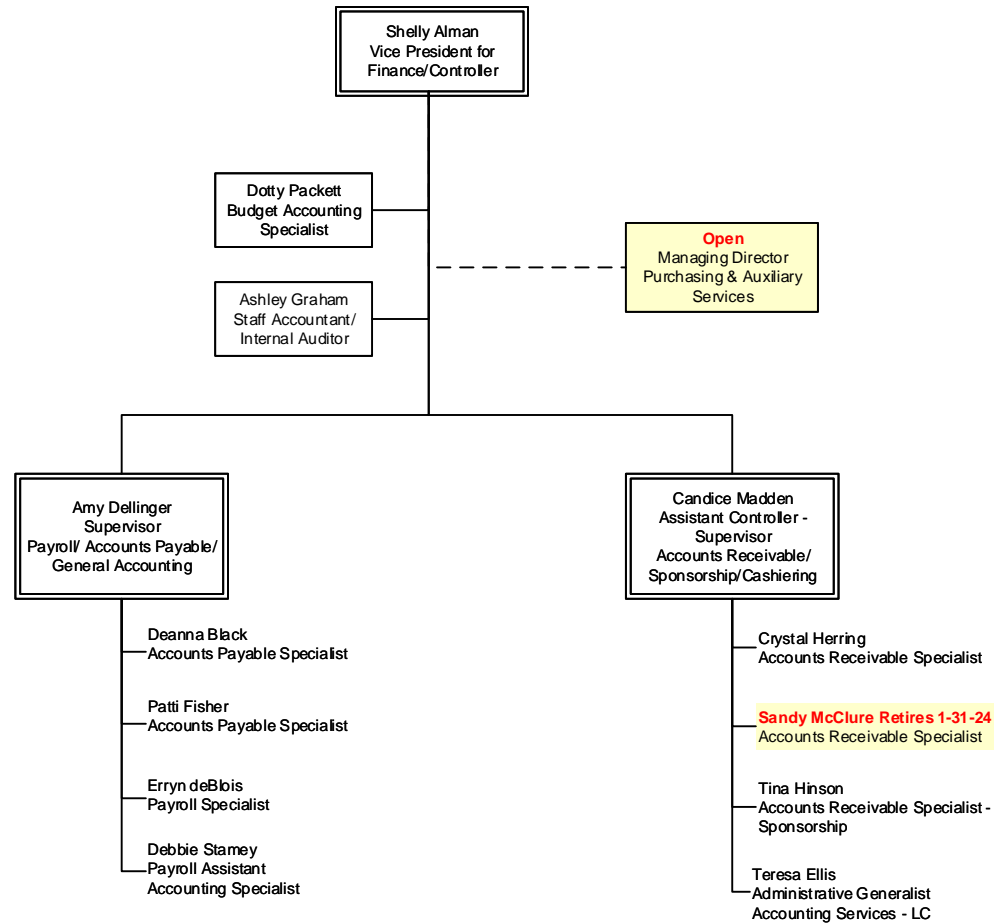


Organization Chart Technology Services (IT)



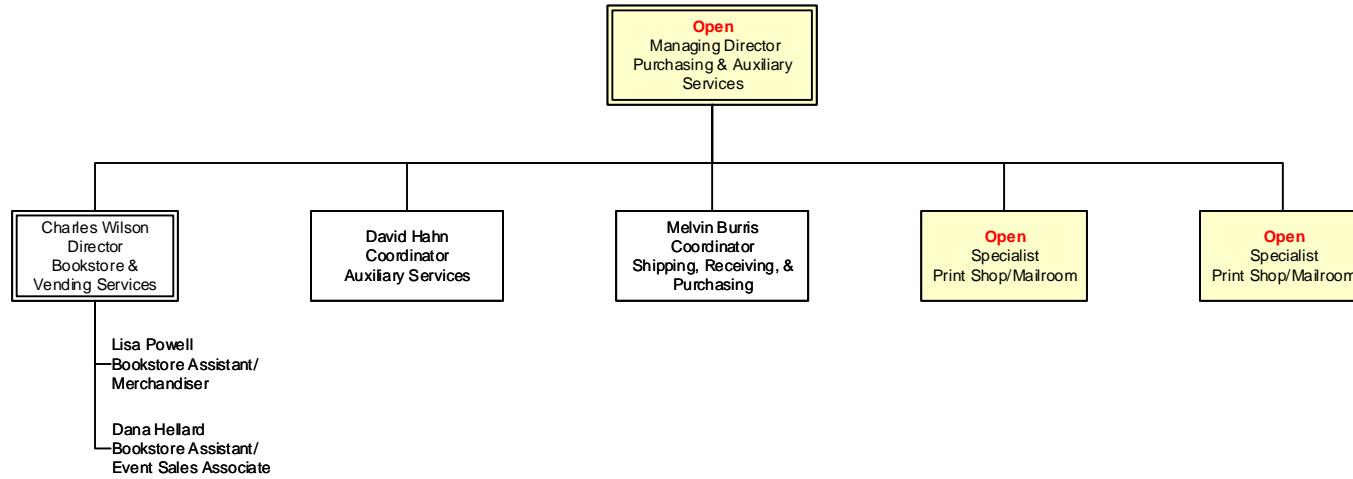
Organization Chart Finance

Updated: 11-17-2023
Supersedes: 10-1-2023



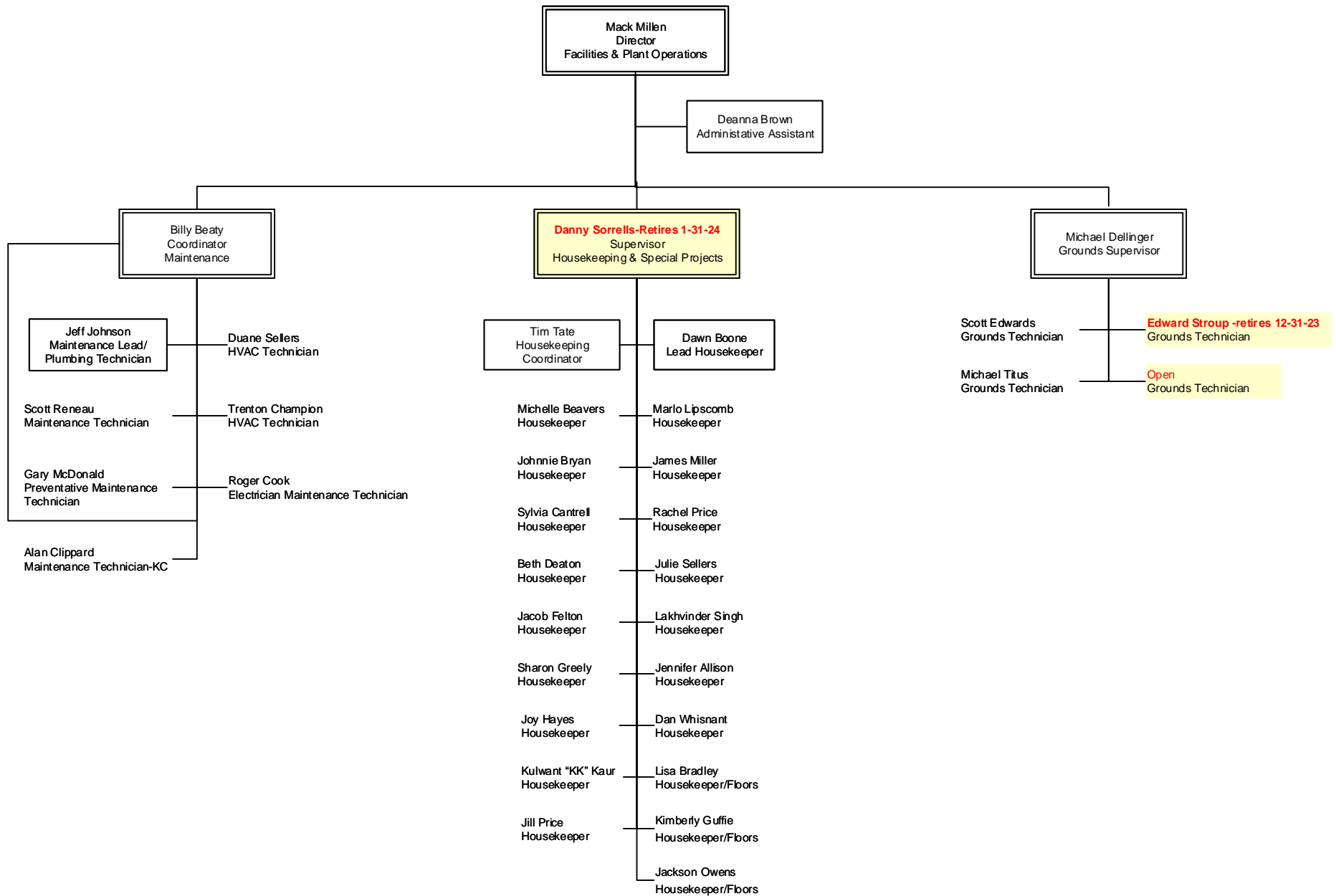
Organization Chart Purchasing & Auxiliary Services

Updated: 10-1-2023
Supersedes: 7-1-2023



Organization Chart Facilities & Plant Operations

Updated: 11-17-2023
Supersedes: 8-1-2023



Organization Chart Kimbrell Campus & Textile Technology & Fiber Innovation Centers

